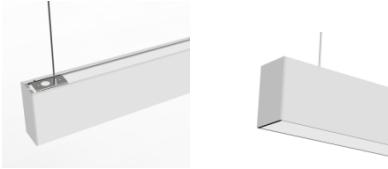
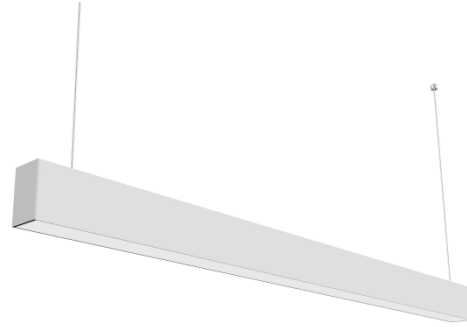


Specification

LED Linear Light-Down (A Series)



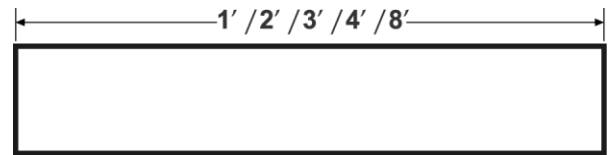
NOTES:

1. This specification for our regular product specifications.
2. The right of final interpretation of this specification to International Building Supply Corporation.



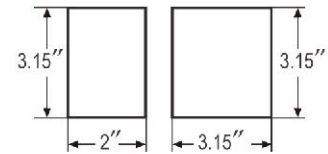
1. Descriptions

- ◆ LED Linear Light
- ◆ Ideal replacement of fluorescent fixtures
- ◆ Perfect to apply in: Supermarkets, Meeting rooms, Offices, Hospital, Warehouse, Hotels, Retail stores, etc



2. Characteristics

- ◆ Stylish and Unique design
- ◆ Multiple connecting methods with “+”、“T”、“L” hardware,
Max connection 550W @120V, 1000W @277V
- ◆ Modularized design, easy to maintain and replace
- ◆ Motion sensor, BBU optional
- ◆ CRI > 80, CRI>90 optional



3. Applications



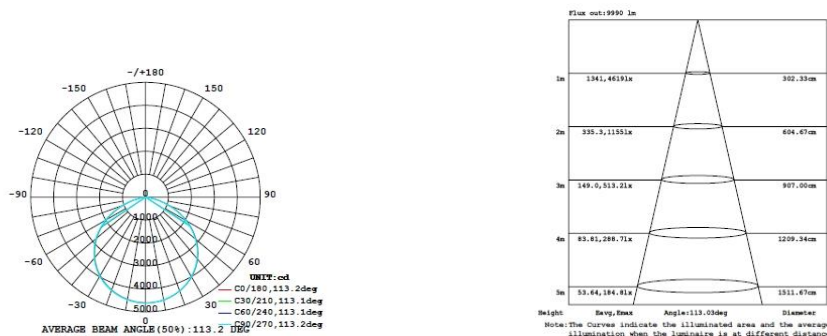
4. Technical Parameters

Code	LD-LF-D-1A/B08-XX-	LD-LF-D-2A/B16-XX-YY	LD-LF-D-3A/B24-XX-	LD-LF-D-4A/B32-XX-	LD-LF-D-4A/B45-	LD-LF-D-8A/B64-
	YY		YY	YY	XX-YY	XX-YY
Power (W)	8W	16W	24W	32W	45W	64W
PF	0.95@120V;					
Input Voltage (V)	100-277VAC					
Efficacy (lm/W)	130lm/W					
Lumen output	1040lm	2080lm	3120lm	4160lm	5850 lm	8320lm
CCT (K)	3000K/3500K/4000K/5000K					
Dimming	1-10V					
CRI	>80,>90					
Beam angle	120°					
Material	Aluminum+ PMMA					
Operating Temperature	-20°C to 40°C/-40°F to 104°F					
Humidity	10% - 90%,					
Installation	Suspended Surface mounted					
Connection	“+” “L” “T”					
Certification	ETL/UL/DLC					
Environment	Indoor Damp Location					
Warranty	5 Years					
Product size (L*W*H)	12"*2"*3.15" /12"*3.15"*3.15"	24"*2"*3.15" /24"*3.15"*3.15"	36"*2"*3.15" /36"*3.15"*3.15 "	48"*2"*3.15" /48"*3.15"*3.15 "	48"*2"*3.15" /48"*3.15"*3.1 5"	96"*2"*3.15" /96"* 3.15"*3.15"

Notes

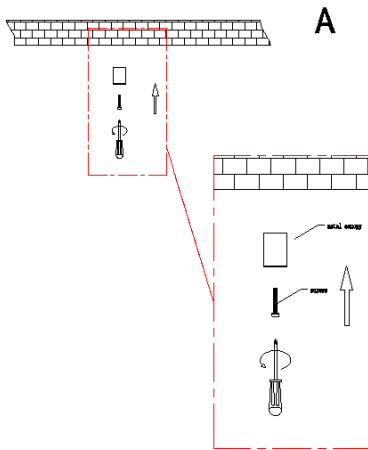
1. XX stands for 3000K-5000K.
2. YY stands for EM、MS.
3. Efficacy is 10% lower for CCT below 4000K.

5. Photometric Data

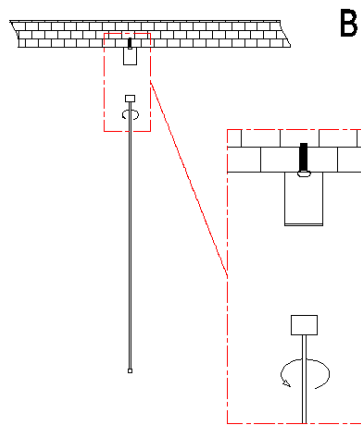


6. Installations:

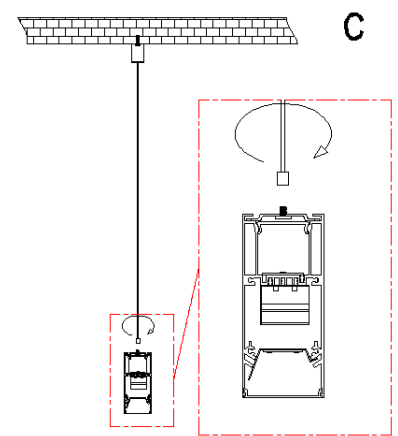
6.1 Suspended Installation



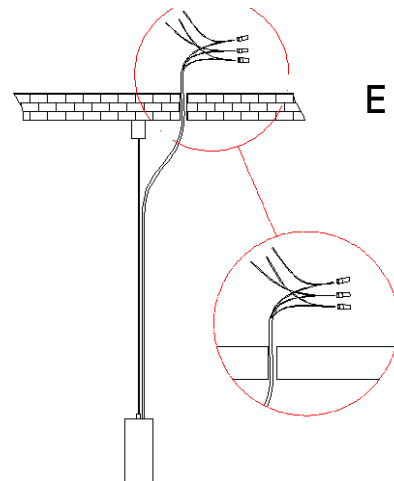
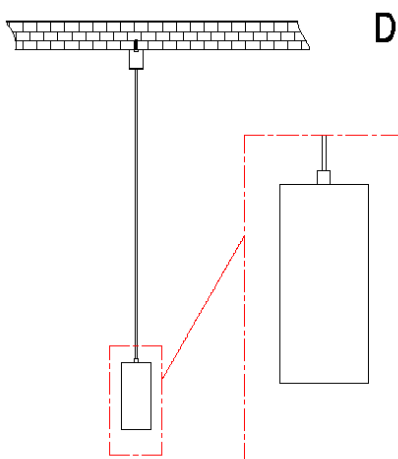
A. fix metal canopy with screws on ceiling.



B. connect suspending kit and metal canopy as clockwise



C. install clips on suspending kit, then fix electrical connection module and assemble lamp body finally as picture.



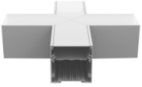
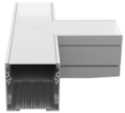



E. finished wire connection as picture.

NOTE: For more installation information, please refer to the installation manual shipped with the fixture



7. Accessories

Photo	Description	quantity
	Stainless steel holding: fix lamps	2
	Stainless steel rope	2
	“+”shape connector	1
	“T”shape connector	1
	“L” shape connector	1