



# Snoopy Gems

Volume 52 Number 1 January 2026  
Mississippi Gulf Coast Gem &  
Mineral Society Inc.



Email: [mgcgms@bellsouth.net](mailto:mgcgms@bellsouth.net)

MGCGMS Established in 1974

## Message from the President

Dear Members,

I hope the holidays were good and you each had time with family and friends. Now that we are starting the new year, I would like to set a few objectives.

First, I think we need to increase our visibility in the community and hopefully attract new members. I would like each of you to think of ways we could accomplish this.

Second, I want to set a semi-permanent schedule of our monthly and public Wednesday classes. If you have any ideas for classes and/or would consider teaching a class, please let me know. I would like to include a few lapidary classes in our schedule also. We all love the jewelry classes, but I think we need to expand our curriculum to other areas of gem and mineral interest. I hope this will encourage more participation from different members of the club and possibly the community.

Lastly, we will need to have a larger group supporting Barbi for the annual show. I would like to have a committee with Barbi as the leader which will meet regularly for planning. The show is a huge endeavor and shouldn't be shouldered solely by one person.

I hope each of these items are agreeable to the group and we can move forward in 2026 making this the best and most productive year ever.

Happy New Year to each and every one of you. As always, if you have any concerns, questions or suggestions please contact me.

Stephanie Hatcher  
MGCGMS President

## Workshops:

Our Wednesday classes from 11-4:00 in our room at the Mary C. All members are welcome!

### Saturday Workshop:

**Stephanie Hatcher will be teaching a Wire wrapped Lotus pendant. Kits in copper will be \$10.**

### Materials:

20 & 24 Gauge round wire  
1 teardrop cabochon

### Tools:

flush cutters, chain nose,

round nose pliers, ruler, painters tape, and sharpie



**Wednesday workshop open to the public 1/21/26:**  
TBA

**Machines:** Members of our tool committee will be available to help with cutting and capping gemstones. As always, we will have the club machines available for metal & gemstone testing, gemstone cutting, and capping. There is a \$3 tool maintenance fee to use the machines.

You are cordially invited to Billy Kelly's 100th Birthday January 17th from 1:00-3:00pm at Summerhouse Bay Cove Biloxi. 680 Bay Cove Dr. Biloxi, MS Party is on the second floor. Hope to see you there. Ms Billy is our longest standing member!



<http://www.mgcgms.org>

PO Box 857 Ocean Spring, MS 39566



# Meeting Minutes

## GULF COAST GEM & MINERAL SOCIETY

### September 2025 Minutes



**Meeting called to order:** 1:05 pm by Joni Arias, Vice President.

**Meeting Minutes:** Minutes from the June meeting were distributed and reviewed. Motion to accept the minutes made by Karen, second by Vicki Reynolds. Minutes were approved.

**Treasurer:** Barbi gave the treasurer's report with totals for accounts. Motion to accept by Vicki Reynolds, second by Peter. Report was approved.

#### Committee Reports

**Sunshine:** Still sending out cards.

**Membership:** One new member from the website, Stacey Lapage.

**Communication:** Please check your email from the club for information and a link to the website. That is where most of the current information will be regarding classes and activities for the group.

**Newsletter:** The newsletter was distributed at the meeting.

**Show:** A donation sheet is available for raffle items. These items should be valued at a minimum of \$25. These need to be finalized asap so Barbi can get that information out. There are also sign-up sheets for volunteers and food for the vendor's dinner. We will have a September meeting on the second Saturday but there will be no class. This meeting will be specifically to work on the show. Our club will become a sponsor club for Wreaths Across America and we will have that at the entry table to the show. Vicki will check on the electric load capacity of the foyer area of the civic center and report back to the club. Vendors are still finalizing for the show. Currently we have 19 vendors plus the sluice outside. Discussed whether the club should rent or buy tables. We would need to have a place to store them. For this year we will probably purchase a few and rent the rest, then buy more each year. Stephanie made a motion to buy a limited number this year and rent the rest. There was a second from Barbi and the motion passed. We are not sure what time we can get in the building for set up on Thursday, but Barbi will get that information for our next meeting.

**Workshops:** Today's workshop by Barbi Beatty to wire wrap a cabochon. This next Stephanie Hatcher will be teaching a wire wrapped bracelet. Kits will be available. Vicki asked that the group make suggestions for what they want to see for upcoming workshops. Alan talked about making a channel ring at William Holland and wants to gauge interest to do that here.

**New Business:** Vicki reported that John Wright, who passed away in March, had equipment and materials that were available as his daughters continue to clean out his home.

**Gem of the Month:** Information on peridot included in Snoopy Gems.

**Motion to Adjourn:** 2:10 PM motion made to adjourn by Barbi Beatty, second by Harvey Marcum, motion carried.

**Door Prizes:** Drawings held for door prizes.

**Reported by:** Secretary Stephanie Hatcher





# Happy

# January

# Birthday

Joni Arias, Lisa Fitch, Stephanie Hatcher,  
Billy Kelly, Alex Marcum, Belinda Marcum,  
Angie Troutman, Lettie White



Garnets: Unveiling the Spectrum of January's Birthstone

Garnets, the birthstone for January, have captivated human fascination for centuries due to their stunning array of colors and unique crystal structures. We will explore the diverse spectrum of colors exhibited by garnets and the underlying geological and chemical factors responsible for their distinct hues.

Structure



Garnets are a group of silicate minerals with a shared crystal structure but a remarkable range of colors. January's birthstone encompasses various species, including almandine, pyrope, spessartine, grossular, and andradite. Understanding the mechanisms that give rise to the different colors requires an exploration of their formation processes. Chemical Formula: Garnet is a series of several different

minerals with unique chemical formulas.

Color: Red, Green, Yellow, Orange, Brown, Pink, Purple, Gray, Black

Hardness: 6.5 - 8.5

Crystal System: Isometric

Refractive Index: 1.780 - 1.889

SG: 3.5 - 4.3

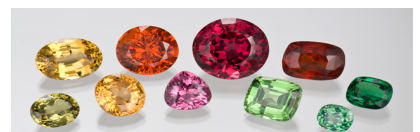
Transparency: Transparent to translucent

Double Refraction: None

Luster: Vitreous; some forms adamantine or submetallic

Cleavage: None. May exhibit parting.

Mineral Class: Garnet



## Formation and Geological Origins:

Garnets form under a variety of geological conditions, from metamorphic rocks to igneous intrusions. The specific combination of temperature, pressure, and mineral composition during their formation contributes to the unique coloration. For example, almandine garnets, known for their deep red hues, often originate in metamorphic rocks rich in iron and aluminum. Garnet's spectrum of colors is a testament to the mineral's chemical complexity and the diversity of geological processes that produce it

## Chemical Influences on Coloration:

The vibrant colors of garnets are intricately tied to the presence of transition metal ions within their crystal lattice. Iron, manganese, and chromium are common trace elements that influence the gem's color. The varying oxidation states and concentrations of these elements result in a broad spectrum of colors, from the fiery red of pyrope garnets to the vibrant green of demantoid garnets.



## Color Variations in Garnets:

1. Almandine (Red) Iron impurities in the crystal lattice contribute to the deep red color, ranging from purplish-red to brownish-red hues.
2. Pyrope (Red) High magnesium content and low iron levels create the iconic ruby-red appearance.
3. Spessartine (Orange): Manganese impurities yield shades of orange, from yellow-orange to reddish-orange.
4. Grossular (Green): Variable composition, including calcium and chromium, produces colors spanning from green to yellow and even brown.
5. Andradite (Yellow to Green): Presence of iron, titanium, and manganese results in yellow, green, and brown tones.

**Color-Change Garnet** - Garnet that exhibits a different color in natural and artificial light. Color-Change Garnet is an intermediary mix between the Pyrope and Spessartite (though closer in composition to Pyrope), and presents a color change from a light brownish, yellowish, or greenish in daylight to a pink or purplish color in incandescent light. A few rare specimens may even have a bluish color, which is extremely rare for Garnet.



Garnets, with their kaleidoscopic range of colors, offer a fascinating exploration into the geological and chemical intricacies of gemstone formation. As we delve deeper into the science behind their hues, we gain a greater appreciation for the natural processes that create these mesmerizing gemstones, making them an enduring symbol of January birthdays.

## Geographic Distribution



The diversity of garnet colors is mirrored by the wide distribution of garnet deposits worldwide. Notable sources include:

**Africa:** Tsavorite from Kenya and Tanzania, spessartine from Namibia.

**Asia:** Almandine from India, rhodolite from Sri Lanka.

**Americas:** Pyrope from Arizona, almandine from Alaska.

**Europe:** Demantoid from Russia, melanite from Italy.

**Australia:** Pyrope and almandine deposits in Queensland.





## Upcoming Shows

### 2026 MGMS Gem & Mineral Show

at the Trade Mart on the State Fairgrounds in Jackson!

February 28 and March 1, 2026



Saturday – 9:00 to 6:00    Sunday – 9:00 to 4:00



### MARK YOUR CALENDAR!

#### Admission:

Adults \$8    Students \$3

Scouts and Leaders in Uniform \$2

Children 5 and under – Free

Over 25 dealers

Dealers from across the country come to sell minerals and fossil specimens, beads, lapidary tools and cutting materials, gems, jewelry and more.

#### Demonstrations and Children's Activities

Throughout the Show, demonstrators illustrate the diversity of the lapidary arts including cabochon cutting, flint knapping, and jewelry making.

Fun activities for the young (or young at heart) will be found at the Children's Activities booth.

#### Educational Resources

Various state organizations, colleges, and earth science professionals and enthusiasts provide educational opportunities.



## Bench Tips

Effective jewelry bench tips focus on ergonomics (proper height for posture), organization (tools easy to reach, labeled), and safety (eye protection, sturdy bench) to improve comfort, efficiency, and quality, involving setup like chest-height bench and adjustable chair, keeping the work area tidy, and using tools like rawhide mallets and chalked files for precision. Mastering techniques like bench pin modification and proper handpiece use are also key.

### Ergonomics & Setup

**Bench Height:** Aim for chest height when sitting upright to avoid hunching; higher than standard tables.

**Chair:** Use an adjustable-height office chair so your forearms are parallel to the bench surface.

**Posture:** Adjust chair and bench so you look straight ahead, not down, to prevent neck/shoulder strain.

**Sturdy Base:** Ensure your bench is solid to absorb hammering and won't wobble.

### Organization & Efficiency

**Layout:** Position frequently used tools within easy reach, tailored to your dominant hand (e.g., tools on the right for right-handers).

**Labeling:** Label drawers, boxes, and even burrs/drills to save time finding them.

**Cleanliness:** Keep your immediate work surface clear for planning and working, using trays for small parts.

**Tool Management:** Keep tools organized but accessible; don't hide frequently used items.

### Safety

**Eye Protection:** Always wear safety glasses.

**Ventilation:** Ensure good airflow, especially when soldering or polishing.

**Hazard Avoidance:** Be aware of common hazards in jewelry making.

# We always welcome new members!



Date \_\_\_\_\_ Mississippi Gulf Coast Gem and Mineral Society

<a href="http://www.mgcgms.org">http://www.mgcgms.org</a>		<b>Application for Membership</b>	
Individual: \$20.00		Individual +1 relative Same Address: \$30.00	
		Junior Under 18: \$6.00	
Name: _____		Cell: _____	
Name: _____		Cell: _____	
Address: _____		Home Phone: _____	
City: _____			
State: _____		Email 1: _____	
Zip: _____		Email 2: _____	
<b>Members Birthdays</b>			
Adult: _____		Birthday M/D: _____	
Adult: _____		Birthday M/D: _____	
Junior: _____		Birthday M/D/Y: _____	
Junior: _____		Birthday M/D/Y: _____	
<b>Please Check All Applicable Interests</b>			
<input type="radio"/> Beading <input type="radio"/> Chain Mail <input type="radio"/> Field Trips <input type="radio"/> Fossils <input type="radio"/> Others: _____	<input type="radio"/> Cabbing <input type="radio"/> PMC <input type="radio"/> Faceting <input type="radio"/> Wire Wrapping		<input type="radio"/> Jewelry Making <input type="radio"/> Lapidary <input type="radio"/> Minerals <input type="radio"/> Silver Smithing
How did you hear of us? _____			
Please check the following:			
<input type="radio"/> I understand that my picture or likeness may be used in Society promotions. <input type="radio"/> I authorize MGCgms to include my contact information be included in Society listings for members to contact each other only.			
Signature: _____			
Signature: _____			

Mississippi Gulf Coast Gem & Mineral Society Inc.  
 P.O. Box 857 Ocean Springs MS 39566  
[mgcgms@bellsouth.net](mailto:mgcgms@bellsouth.net)

**Snoopy Gems**  
is the Official Publication of  
The Mississippi Gulf Coast Gem and Mineral  
Society, Inc.

**AFFILIATIONS**  
The Southeast Federation of Mineralogical  
Societies, Inc.  
The American Federation of Mineralogical  
Societies, Inc.  
S.C.R.I.B.E. (Special Congress Representing  
Involved Bulletin Editors)

#### OFFICERS 2026

President	Stephanie Hatcher
Vice President	Joni Arias
Treasurer	Barbi Beatty
Secretary	Helen Daniel
Parliamentarian	Open
Editor	Barbi Beatty
Web master	Barbi Beatty
Member at Large	Sue Shelton
Member at Large	Vicki Reynolds

#### COMMITTEES

Membership	Barbi Beatty
Show Chair	Barbi Beatty
Historian	Lettie White
Librarian	Vicki Reynolds
Sunshine	Reba Shotts

#### AFFILIATIONS

ALAA	John Wright: Past Director
SFMS	John Wright: Past President
SFMS	Barbi Beatty: Treasurer & Past Asst Treasurer & Insurance Liaison

SFMS	Buddy Shotts: Past Long-range Planning, Past President, Past State Director
------	--

Annual dues are:  
\$20 Individual  
\$30 (2) Members in same house hold  
\$6 Junior

## 2026 Workshop 10am/ Meeting 1pm & Dates

**January 10 Mary C. 9:30-4:00**  
February 14 Mary C. 9:30-4:00  
March 14 Mary C. 9:30-4:00  
April 11 Mary C. 9:30-4:00  
May 9 Mary C. 9:30-4:00  
June 13 Mary C. 9:30-4:00  
July 11 Mary C. 9:30-4:00  
August 8 Mary C. 9:30-4:00  
September 25 After Vendor Dinner  
October 10 Mary C. 9:30-4:00  
November 14 Mary C. 9:30-4:00  
December 12 Christmas Party Mary C.  
11:00am-3:30pm

**Dates subject to change.**  
**Be sure to check each month!**  
The September meeting is the Friday  
evening of the gem show after the dinner  
for the dealers at the Ocean Springs Civic  
Center Building.  
December will be our  
Christmas Party and Installation of  
Officers

## January 2026

Sun	Mon	Tue	Wed	Thu	Fri	Sat
				1	2	3
4	5	6	7	8	9	10
11	12	13	14	15	16	17
18	19	20	21	22	23	24
25	26	27	28	29	30	31

# Snoopy Gems

**Official Publication of the Mississippi Gulf Coast Gem & Mineral Society Inc.**



**<http://www.mgcgms.org>**



The Mississippi Gulf Coast Gem & Mineral Society is a Non-profit Organization Dedicated to Education, Science, and the Lapidary Arts and Crafts

**Snoopy Gems MCGMS**  
**P.O. Box 857**  
**Ocean Springs, MS 39566**