



Snoopy Gems

Volume 48 Number 2 February 2022
Mississippi Gulf Coast Gem &
Mineral Society Inc.



Email: mgcgms@bellsouth.net

MGCGMS Established in 1974

President's Message

Dear Members,

This month we are moving our Saturday 12th meeting to the same time on Sunday, February 13th due to the Mardi Gras parade on Saturday. If you are late on Sunday you can start the project when you get there. We'll also show you a gem tree project to work on for a March MaryC event.

We are sad to say one of our members Ed King has passed away. Ed and Aurora have been members of our club for nearly ten years. During that time, Ed enjoyed learning to cut slabs of rock and fashion them into beautiful cabochons suitable for pendants or just specimens. He always gravitated to the cutting and polishing equipment. Ed was generous with his knowledge and skills - always willing to share that knowledge through instruction or demonstrations. Ed had a good sense of humor, a sharp wit, and was able to tell a good joke. He was a kind man and we will miss him greatly.

Vicki will have glass, beads, and display items for sale from the Kennedy estate at the Mary C on Sunday February 6th from 10 am until 1pm. She will be set up in the front lobby. You can enter through the front door.

Don't miss the sale and the February meeting. See you there!

Liz Platt
MGCGMS President

<http://www.mgcgms.org>

January Workshop:

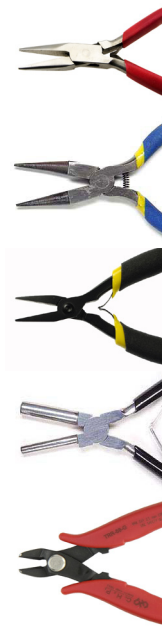
Joni Arias will be teaching a wire-wrapped ear cuff.

Material list:

6mm Round Beads - 8 Inch Strand
20 Gauge Half Round Half Hard Wire 6 inches
21 Gauge Round Half Hard Wire 14 inches

Tools:

Chain Nose Pliers, Round Nose Pliers, Flat Nose Pliers,
Bail Making Pliers, Flush Cutters, 12 Inch Ruler



Machines: Members of our tool committee will be available to help with cutting and capping gemstones. As always, we will have the club machines available for metal & gemstone testing, gemstone cutting, and capping.

Claire Martin
Workshop Chair
228-366-3612
ladycofms@yahoo.com

PO Box 857 Ocean Spring, MS 39566



Meeting Minutes

GULF COAST GEM & MINERAL SOCIETY

January 2022



Meeting called to order: by Liz Platt, President.

Meeting Minutes Approval: Barbi Beatty motioned to accept December's minutes. Buddy Shots 2nd. Motioned carried.

Treasurer's Report: 2021 Gem & Mineral Show balance provided by Barbi Beatty, Treasurer. Good show and Vendors were very happy. 7 new members joined; Claire Martin reached out to welcome them.

Meeting: We may have to revisit some things on the show but overall, it was a successful event. Harvey Marcum suggested that we have popcorn at the concession stand for next year's show. We will need to figure out how/where to spend any money that we spend. Whether it needs to be for classes, equipment, or something else. We gave a scholarship last year that was not able to be used that we can re-give. Will need to consider whether or not we would be interested in selling or demonstrating for a rock show in April or May 2022. Need to know what type of projects the club is interested in working on this year. Need to also consider if an outside instructor should be brought in to teach something. Joni Arias mentioned doing some cold connections, Liz Platt would like to learn knotting. Cost of metal is increasing so consideration needs to be given to whether or not silver or argenteum should be used for learning purposes or if a more cost efficient (i.e., copper, which cannot be fused) metal should be used. SFMS has a gem show in Jackson, MS February 26 & 27th 2022. There is a Rockhound Round Up February 18th - 20th in Florida. Tucson, AZ Gem, Mineral & Fossil show begins January 18th, 2022. Gallery 782 is looking for a Jeweler, and Art. Ocean Springs Chamber of Commerce is having an Herb Garden Art Spring Show in March 2022.

Workshop: Vicky Reynolds taught a beautiful Wire Wrapped Seahorse. Buddy Shots started Allan Elliott on faceting his first stone.

Tools and Equipment: John Guglik stated that we have enough capping machines to meet the clubs needs. He explained what a cab is, how it differs from a faceted stone, and the time involved with capping. Both John and Buddy explained how certain stones and gems can not be capped. Liz explained that some of our funds are used to maintain club equipment. There is also testing equipment available to test gems, golds, and silver. The club cannot provide any appraisals. More advanced lapidary knowledge can be learned at Wild Acres, and William Holland.

Sunshine: Per Reba Shotts, no illnesses reported. Sent out a couple of cards to Wanda Sigler and a card to Thomas Simmons.

Old Business: The club is still obligated to do one class per quarter at Mary C O'Keefe Cultural Art Center. Please consider volunteering.

New Business: Per Liz Platt, we are working on budgets, working on workshops, and per Barbi Beatty we talked about doing a mini show. We want to stay away from May due to Harrison County's Gem Show. Need to know how many members are interested and check with Mary C for their schedule. Liz Platt issued a questionnaire to determine what members are interested in learning. Please fill out and return by the next meeting.

Gem of the Month/Show and Tell: Buddy Shots provided members with detailed information on Garnets

Motion to Adjourn and Door Prizes: Door prizes won by Barbi Beatty, Harvey Marcum, Belinda Marcum, Liz Platt, Rosalind Norvel-Daniels, and Van Crump. Vicky Reynolds motioned to adjourn, Reba Shotts 2nd. Meeting adjourned at 2:10.

Happy



February

Birthday

Barbie Canaga Mike Martin Vicki Reynolds David Spencer

Amethyst
FEBRUARY
BIRTHSTONE



Amethyst - History and Introduction

Amethyst belongs to the quartz group of minerals. It is recognized as the official birthstone for the month of February. Amethyst belongs to the macrocrystalline branch of quartz. It gets its violet/purple color to iron and aluminum impurities. Like other varieties of macrocrystalline quartz, amethyst has transparent to translucent clarity and a vitreous luster.

Amethyst Gemological Properties:

Chemical Formula: SiO₂ - Silicon dioxide

Crystal Structure: Trigonal; hexagonal prisms

Color: Violet, pale red-violet, purple

Hardness: 7 on the Mohs scale

Refractive Index: 1.544 - 1.553

Density: 2.65

Cleavage: None

Transparency: Transparent to semi-translucent

Double Refraction / Birefringence: 0.009

Luster: Vitreous



Amethyst Origin and Sources

The most important amethyst deposits are in Brazil, namely the "Palmeira" amethysts of Rio Grande do Sul and the "Maraba" amethysts of Para. Other significant amethyst deposits are located in Bolivia, Canada, India, Madagascar, Mexico, Myanmar (Burma), Namibia, Russia, Sri Lanka, United States (Arizona), Uruguay and Zambia.



Amethyst Color

Amethyst owes its color to iron and aluminum impurities. The colors range from purple and violet to pale red-violet. The deep colors are the most valuable, particularly a rich purple with rose flashes. Amethyst does not display its best color in artificial light. Amethyst looks best in daylight; especially, slightly after sunrise or just before sunset when the light is soft and warm. Amethyst is distinguished by its violet-purple colors. The best specimens have a deep purple color and good saturation with minimal color zoning. Amethyst is typically untreated. Some amethyst stones may be enhanced though heating, but heating of amethyst will reduce coloring agents and result in 'heated citrine'. The only difference between amethyst and citrine is the level of iron impurities in amethyst. When amethyst is heated at high temperatures of around 470°C to 750°C, iron impurities are reduced and can turn from violet to golden creating a 'heated' citrine. Lower grade amethyst stones are often heated to produce golden colored citrine stones. Heated citrine will typically appear more reddish when compared to unheated citrine. What is being called green amethyst is produced by heat treatment, but since amethyst is defined by its purple color, green amethyst is not considered to be a true amethyst. Ametrine is the bicolored combination of both amethyst and citrine.



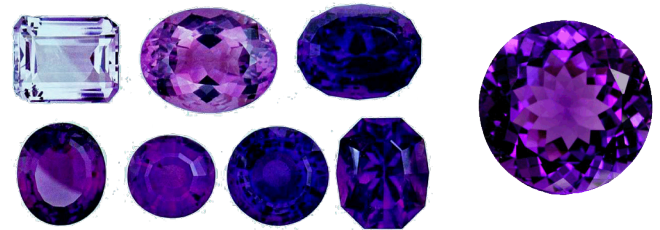
Amethyst Clarity and Luster

Fine amethyst is transparent, which means the light passes through the stone unhindered. In translucent amethyst, the passage of light is slightly weakened as it travels through the stone. The best quality amethyst is "clean" and free of visible inclusions of any kind. Since amethyst is quite plentiful, there is little reason to buy stones with visible inclusions.



Amethyst Cut and Shape

Due to the variability of the color distribution in the amethyst crystals, it is often cut as brilliant rounds or ovals to maximize the color. Very rarely will amethyst be cut into a cabochon. Other shapes and modified cutting styles are quite popular, but typically, only amethyst specimens with good color distribution are cut into fancy shapes. Amethyst is available in just about every shape, cut and size. Calibrated sizes are easily found and fancy shapes such as trillions, hearts and shields are very common. Amethyst is often carved into ornamental shapes, so there are many amethyst carvings available on the market today.



Amethyst Gemstone and Jewelry Care and Cleaning

Amethyst can easily be cleaned with warm water and a mild soap. Wipe down amethyst using a soft cloth or toothbrush. Amethyst is quartz and although it is relatively hard and durable, there are a number of other gemstones capable of easily scratching amethyst. Therefore, take caution and do not place other harder gems near amethyst when storing, cleaning or wearing amethyst jewelry. As with most other colored stones, do not use harsh household chemicals when cleaning amethyst gemstone jewelry. Avoid prolonged exposure to extreme heat, because heat can cause permanent damage to the gemstone. When storing amethyst, always store jewelry inside a fabric-lined box or wrap it in a soft cloth. Amethyst should be stored separately from other stones, whether of whether or not they are harder or softer.

BENCH TIPS

A File-Safe Plan

Modifying Files for Working Near Stones

Most flat and square files—both large hand files and small needle files—have cutting surfaces on all four sides and on the edges. The sharp edges are great if you want to carve a 90° groove into a piece of metal, but they can be problematic for certain applications, such as finishing a bezel setting. If you want to clean up the top of a setting, a file with sharp cutting surfaces and edges all around will put the stone in danger. However, with a little effort, you can modify a file that will allow you to play it safe.

First, prepare a safe surface on one side of a fine-cut (#4 or #6) square needle file. (Note: You can also use the following steps to modify barrette needle files, which are great for finishing prongs.) To do this, carefully lay one side of the file against the spinning wheel of a bench grinder and draw it across, removing the abrasive cuts on that side of the file. Repeat until the cuts are completely removed.



After rough grinding, take the file to an oiled sharpening stone—the kind you use to sharpen gravers, drill bits, blades, etc. Hold the file flat against the stone and rub it back and forth to smooth the new surface and remove marks left by grinding. When the surface is smooth, knock the cuts off the edges on both sides of the newly cleaned surface.

With all remnants of the original cuts removed, use progressively finer grits of abrasive paper to bring the surface and adjacent edges to a polish. Begin with 220 grit paper held against a flat surface. Proceed to 320, 400, and 600-grit. Finish up with 4/0 polishing paper. The file should shine on one side.

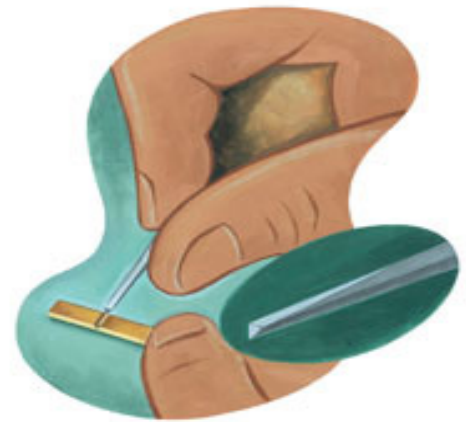
And with that, you have a file that is "safe" for finishing bezels and prongs. Keeping in mind that all stones can be damaged by abrasion, place the safe surface very lightly against the stone and file the setting to perfection.

The Kindest Cut: Making a File-Graver

Another tool adaptation is to turn the tip of a needle file into a graver, so that it can both gouge and abrade. This can be done with any shape needle file (round, square, flat, etc.) Take a sharp fine-cut needle file and, with a sharpening stone, grind a facet at the end as you would on a graver. (I prefer to use a middle-grit India pre-soaked sharpening stone.) Once you have a flat face, sharpen it just as you would a graver, at an angle of about 55°.

You now have a file that cuts like a graver—or a graver with file cuts on the belly. Either way, this cool hybrid tool removes more metal faster and with greater control than either a file or a graver. By holding the file-graver at a low angle against the metal and pressing downward on the forward stroke, it cuts like a graver. Then, by

decreasing the pressure and lowering the handle, you can file with control and precision—and have the benefits of two tools in one.



101 BENCH TIPS BY ALAN REVERE

Alan's books can be purchased @:


Otto Frei www.ottofrei.com

Rio Grande www.riogrande.com

We always welcome new members!



Date _____ Mississippi Gulf Coast Gem and Mineral Society

http://www.mgcgms.org		Application for Membership	
Individual: \$16.00		Individual +1 relative Same Address: \$20.00	
		Junior Under 18: \$6.00	
Name: _____		Cell: _____	
Name: _____		Cell: _____	
Address: _____		Home Phone: _____	
City: _____			
State: _____		Email 1: _____	
Zip: _____		Email 2: _____	
Members Birthdays			
Adult: _____		Birthday M/D: _____	
Adult: _____		Birthday M/D: _____	
Junior: _____		Birthday M/D/Y: _____	
Junior: _____		Birthday M/D/Y: _____	
Please Check All Applicable Interests			
<input type="radio"/> Beading	<input type="radio"/> Cabbing	<input type="radio"/> Jewelry Making	
<input type="radio"/> Chain Mail	<input type="radio"/> PMC	<input type="radio"/> Lapidary	
<input type="radio"/> Field Trips	<input type="radio"/> Faceting	<input type="radio"/> Minerals	
<input type="radio"/> Fossils	<input type="radio"/> Wire Wrapping	<input type="radio"/> Silver Smithing	
<input type="radio"/> Others: _____			
How did you hear of us? _____			
Please check the following:			
<input type="radio"/> I understand that my picture or likeness may be used in Society promotions.			
<input type="radio"/> I authorize MGCGMS to include my contact information be included in Society listings for members to contact each other only.			
Signature: _____			
Signature: _____			

Mississippi Gulf Coast Gem & Mineral Society Inc. P.O.
Box 857 Ocean Springs MS 39566
mgcgms@bellsouth.net

Snoopy Gems
 is the Official Publication of
 The Mississippi Gulf Coast Gem and Mineral Society,
 Inc.

AFFILIATIONS

The Southeast Federation of Mineralogical Societies,
 Inc.
 The American Federation of Mineralogical Societies,
 Inc.
 S.C.R.I.B.E. (Special Congress Representing Involved
 Bulletin Editors)

OFFICERS 2022

President	Liz Platt
Vice President	Jodi Arias
Treasurer	Barbi Beatty
Secretary	Roslind Daniels
Parliamentarian	John Guglik
Editor	Barbi Beatty
Web master	Barbi Beatty
Member at Large	Harvey Marcum
Member at Large	Reba Shotts

COMMITTEES

Membership	Barbi Beatty
Show Chair	Barbi Beatty
Historian	Lettie White
Librarian	Liz Platt
Sunshine	Reba Shotts

AFFILIATIONS

ALAA	John Wright: Director
SFMS	John Wright: Past President
SFMS	Barbi Beatty: Treasurer & Insurance Liaison
SFMS	Buddy Shotts: Past Long-range Plan- ning, Past President, State Director

Annual dues are:
 \$16 Individual
 \$20 (2) Members in same house hold
 \$6 Junior

**2022 Workshop/Meeting
 Dates**

January 8 Mary C. 9:30-4:00
February 13 Mary C. 9:30-4:00
 March 12 Mary C. 9:30-4:00
 April 9 Mary C. 9:30-4:00
 May 14 Mary C. 9:30-4:00
 June 11 Mary C. 9:30-4:00
 July 9 Mary C. 9:30-4:00
 August 13 Mary C. 9:30-4:00
 September 10 Mary C. 9:30-4:00
 October 8 Mary C. 9:30-4:00
 November 10 After Vendor Dinner 5ish
 December 10 Christmas Party Mary C.
 11:00am-3:30pm

Dates subject to change.

Be sure to check each month!

The November meeting is the Thursday eve-
 ning of the gem show after the dinner for the
 dealers at the Jackson County
 Fairgrounds Civic Center Building.
 December will be our
 Christmas Party and Installation of
 Officers

February 2022

Sun	Mo	Tue	We	Thu	Fri	Sat
		1	2	3	4	5
6	7	8	9	10	11	12
13	14	15	16	17	18	19
20	21	22	23	24	25	26
27	28					

Snoopy Gems

Official Publication of the Mississippi Gulf Coast Gem & Mineral Society Inc.



<http://www.mgCGMS.org>



The Mississippi Gulf Coast Gem & Mineral Society is a Non-profit Organization Dedicated to Education, Science, and the Lapidary Arts and Crafts

Snoopy Gems MCGMS
P.O. Box 857
Ocean Springs, MS 39566