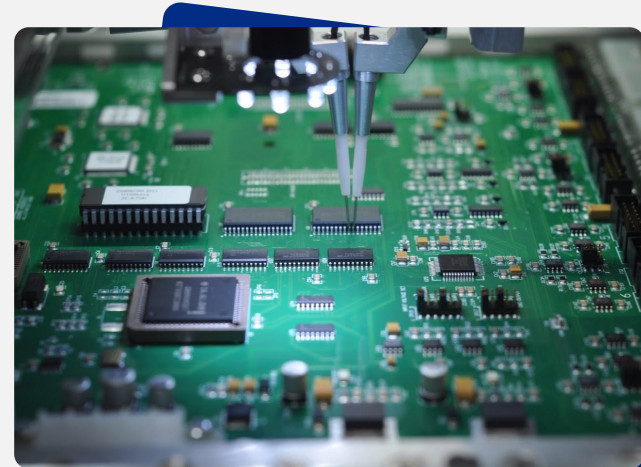


Flying Probe Automatic Diagnostic Tester



Application

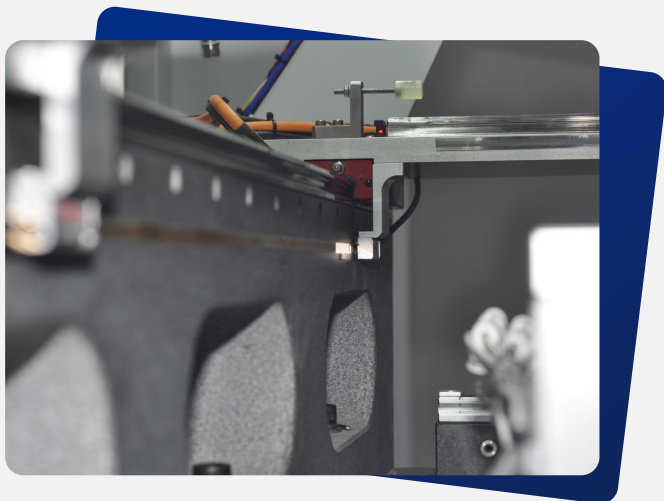
- Fault Detection
- Fault Locator
- Repair
- Military
- Scientific Research



Machine Specifications

- F2 : 400 x 300 mm
- F2L: 500 x 400 mm
- Smallest Device Tested :
008004
- Smallest Pin Measurable :
0.075mm

Customizable



Test Coverage

- VI-Impedance Curve
- Znod-Nodal Impedance Analysis
- Dnod-node PN junction diode
- OS-On-Off
- PO-Power On Safety Test
- Vnod-Node Voltage
- SR-Signal Stimulus Response
- Connector unplug and plug automatically