



MEDIA WAYS Co W.L.L

Seef Area, Platinum Tower, Block 428, Road 2803

Office 182, PO Box 75482

Manama – Kingdom of Bahrain



Media Ways is a specialist out-of-home media owner. The company is newly founded in Bahrain and quickly developed a network of media sites across the country at prime, concentrated and high traffic locations. The company has grown significantly, both organically and through acquisition. Our objective is to help advertisers improve the effectiveness of campaigns over time.

MW001: Three face Prisma located at high visibility prime location in Seef at the entrance & exit from/to the area of main shopping malls of Bahrain.



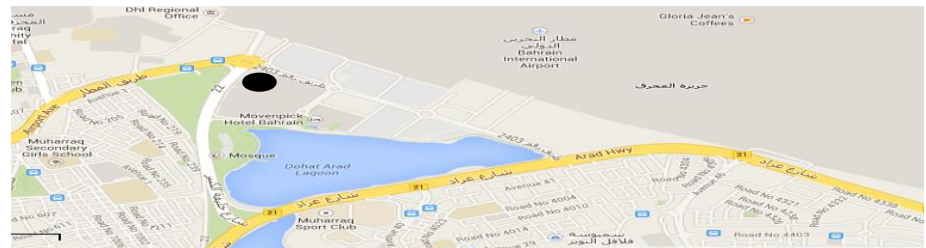
TYPE : PRISMA
SIZE : 14 X4 MTR - FACES : 3
PRINTING ITEM : STICKER



MW002 : located right at the Airport Roundabout prime location. It is one of the largest boards in Bahrain and highly visible by all travellers from/to Bahrain Airport



TYPE : PRISMA
SIZE : 15 X 9 MTR - FACES : 3
PRINTING ITEM : STICKER



MW003 : two face light board located at the heart of Bahrain exhibition road and facing a busy gas station



TYPE : ROOF TOP
SIZE : 10 X 4 MTR - FACES : 2
PRINTING ITEM : BACKLIT



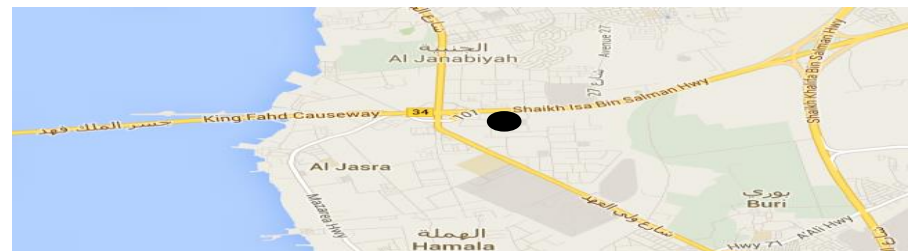
MW004 : Unipole -light board - located at Sheikh Isa Bin Salman Highway , it is the first board right at the entrance to Bahrain from Saudi causeway.



TYPE : UNIPOLE

SIZE : 10 X 4 MTR - FACES : 1

PRINTING ITEM : FRONTLIT



MW005: Unipole -light board - located at Sheikh Isa Bin Salman Highway , which is at the entrance to Bahrain from Saudi causeway.



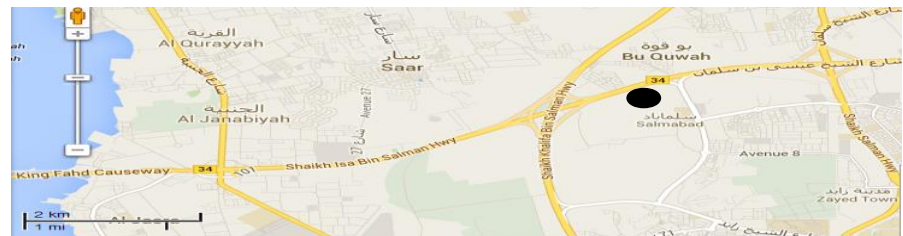
TYPE : UNIPOLE
SIZE : 10 X 4 MTR - FACES : 1
PRINTING ITEM : BACKLIT



MW006: Unipole -light board - located at Sheikh Isa Bin Salman Highway , which is at the entrance to Bahrain from Saudi causeway.



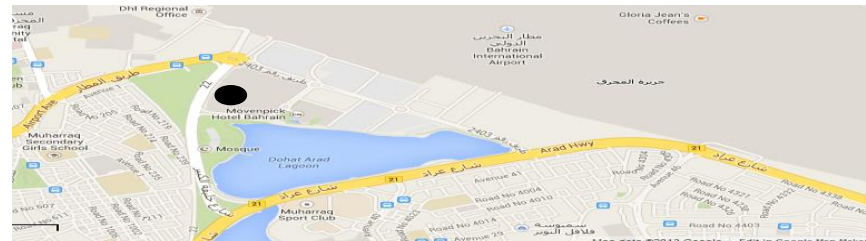
TYPE : UNIPOLE
SIZE : 10 X 4 MTR - FACES : 1
PRINTING ITEM : BACKLIT



MW007: Unipole -light board - located at Muharaq on the road from/to the airport from/to Manama.



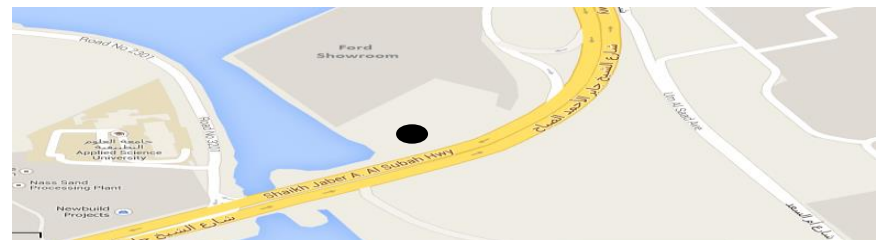
TYPE : UNIPOLE
SIZE : 10 X 4 MTR - FACES : 2
PRINTING ITEM : FRONTLIT



MW008: Unipole -light board - located at Sitra Highway beside the Applied science University and at the road where the main car agencies and show rooms are located.



TYPE : UNIPOLE
SIZE : 10 X 4 MTR - FACES : 2
PRINTING ITEM : BACKLIT



MW009 & MW010: Prisma -light board . Located in Riffa Wadi El Sail and facing busy traffic signals at the corners of the Military Hospital and opposite to the busy fast food drive through shopping area.



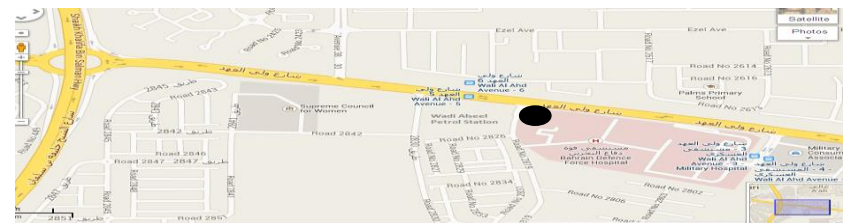
TYPE : PRISMA
SIZE : 9 X 3 MTR - FACES : 3
PRINTING ITEM : GRAY BACK



MW011 & MW012: Prisma -light board . Located in Riffa Wadi El Sail and facing busy traffic signals at the corners of the Military Hospital and opposite to the busy Riffa gas station.



TYPE : PRISMA
SIZE : 9 X 3 MTR - FACES : 3
PRINTING ITEM : GRAY BACK



MW024: Unipole - located at Zallaq Highway, which is a busy road to highly attended facilities such as Bahrain Petroleum Company, Bahrain University, Riffa views, Tatweer , Bahrain Sofitel and Bahrain International Circuit.



TYPE : UNIPOLE
SIZE : 10 X 4 MTR - FACES : 2
PRINTING ITEM : FRONTLIT



MW013 : Unipole – light board . The Only board located at the busy king Faisal highway east side.



TYPE : PRISMA
SIZE : 10 X 4 MTR - FACES : 3
PRINTING ITEM : BACKLIT



A network of 10 outdoor media sites located at the highest visible and prime location in Bahrain given it is distributed along the main Seef road entering to and exiting from Bahrain main shopping area, specifically the Bahrain City Center mall. It consists of attractively designed Megacomms. It is worth highlighting that they are the only illuminated Megacomms in Bahrain.

LOCATION MAP:

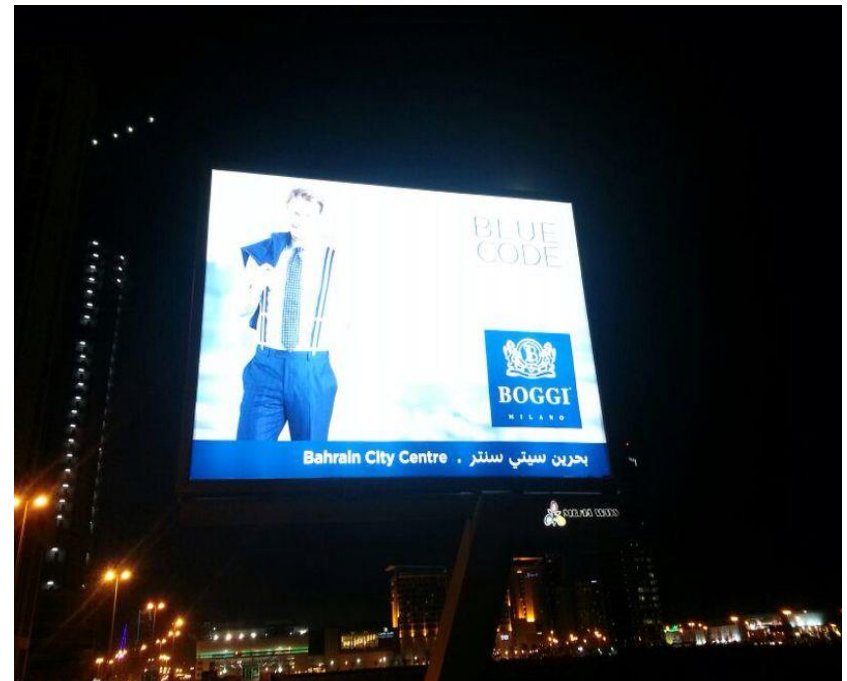
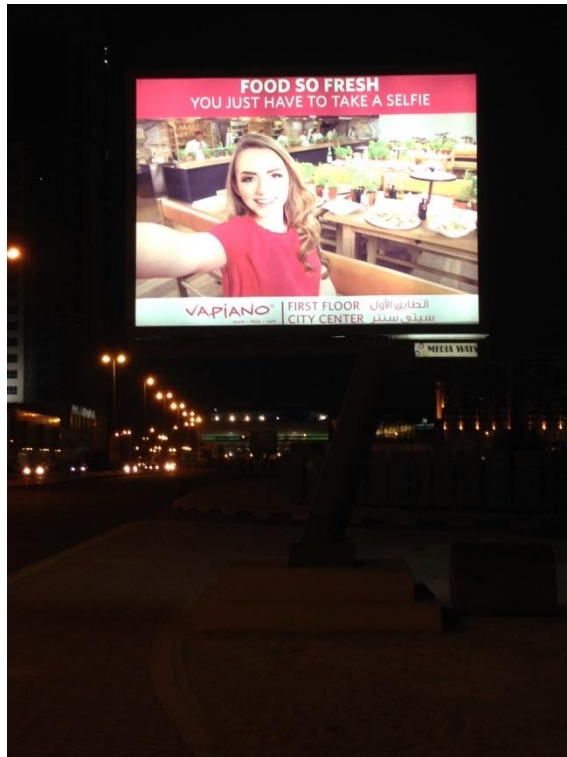


MWSeef : Megacoms located at the highest visible and prime main Seef road entering to and exiting from Bahrain main shopping area. The only illuminated Megacoms in Bahrain.



TYPE : MEGACOM
SIZE : 3X 4 MTR - FACES : 2
PRINTING ITEM : BACKLIT

MWSeef : Megacoms located at the highest visible and prime main Seef road entering to and exiting from Bahrain main shopping area. The only illuminated Megacoms in Bahrain.



TYPE : MEGACOM
SIZE : 3X 4 MTR - FACES : 2
PRINTING ITEM : BACKLIT

60 advertising locations outdoor and indoor of the Bahrain Exhibition Center. The Bahrain Exhibition and Convention Authority signed a partnership contract with Media Ways Company on 6 June 2013 for marketing promotion, supply, installation and management of all available advertisement locations within the Bahrain International Exhibition and Convention Centre.



MW014 & MW015: Two Light boards . Located at the main entrance Walls of Bahrain Exhibition Center.



TYPE : BOARD
SIZE : 6 X 3 MTR
PRINTING ITEM : VINYL

MW016 & MW017: Two Light boards . Located at the outer Walls of Bahrain Exhibition Center.



TYPE : WALL BOARD
SIZE : 12 X 7.5 MTR
PRINTING ITEM : FLEX

MW018 & MW019: Two Light boards . Located at the outer Walls of Bahrain Exhibition Center.



TYPE : WALL BOARD
SIZE : 12 X 7.5 MTR
PRINTING ITEM : FLEX

MW020 & MW021 & M022: Light boards . Located at the outer Walls of Bahrain Exhibition Center.



MW023 : Flags.



TYPE : FLAGS
SIZE : 4 X 1 M
PRINTING ITEM
FLEX



MW025: Unipole - located at Bahrain International Exhibition & Convention Center. Highly visible facing traffic signals leading to Exhibition Center, the busy Geant shopping Center, Danna Mall, LMRA and Sanabis business Area.



TYPE : UNIPOLE
SIZE : 10 X 4 MTR - FACES : 2
PRINTING ITEM : BACKLIT



MW026: 20 Lampposts at the Main Shk Isa HW at the entrance from Saudi Causeway to Bahrain



TYPE : LAMPPOSTS

SIZE : 3 X 1,5 MTR - FACES : 2



OUR CLIENTS



THANK YOU



MEDIA WAYS Co W.L.L

Seef Area, Platinum Tower, Block 428, Road 2803

Office 182, PO Box 75482

Manama – Kingdom of Bahrain

T: +973 17564858 | F: +973 17564857

www.mediawaysbh.com