

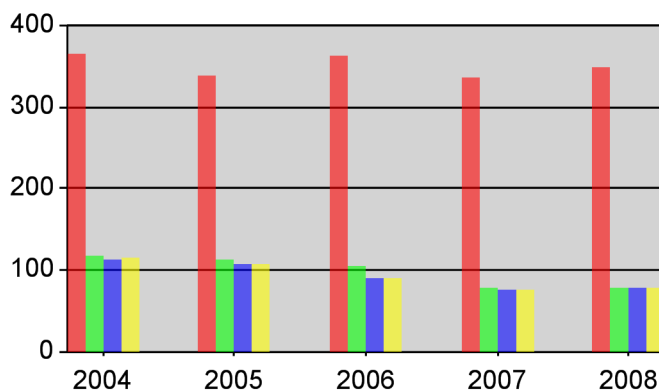
Church Trend Profile, 2004 - 2008 Membership & Program

Church: Dutch Bottoms, Newport
SBC Number: 0290197

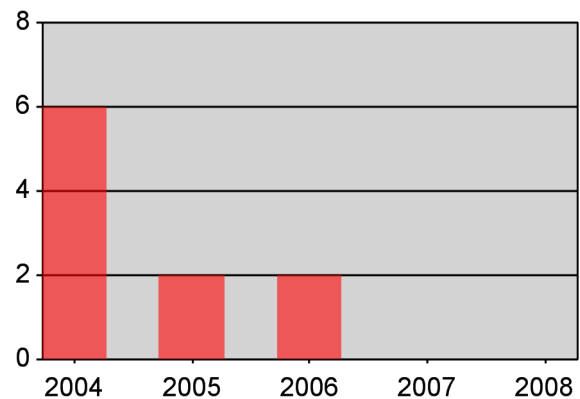
Association: East Tennessee
TBC Number: 00827

	2004	2005	2006	2007	2008	Net Change	Percent Change
Membership							
Total Members	456	427	447	418	431	-25	-5.5 %
Resident Members	365	339	363	336	349	-16	-4.4 %
Evangelism/Additions							
Baptisms	6	2	2	0	0		
Res Members per Baptism	61	170	182	Infinity	Infinity		
Other Additions	2	0	2	0	0	-2	-100.00 %
Worship/Music							
Worship Attendance	116	112	105	78	77	-39	-33.6 %
Music Enrollment	0	0	0	0	0	0	0.0 %
Bible Study/Discipleship							
S.S. Enrollment	112	106	90	75	77	-35	-31.3 %
as pct. of Res. Mem	30.7 %	31.3 %	24.8 %	22.3 %	22.1 %		
Avg. S.S. Attendance	114	106	89	75	77	-37	-32.5 %
as pct. of S.S. Enroll	101.8 %	100.0 %	98.9 %	100.0 %	100.0 %		
Discipleship	0	0	0	0	0	0	0.0 %
as pct. of Res. Mem	0.0 %	0.0 %	0.0 %	0.0 %	0.0 %		
Mission Participation							
WMU Enrollment	0	0	0	0	0	0	0.0 %
as pct. of Res. Mem	0.0 %	0.0 %	0.0 %	0.0 %	0.0 %		
Brotherhood/Men's	0	0	0	0	0	0	0.0 %
as pct. of Res. Mem	0.0 %	0.0 %	0.0 %	0.0 %	0.0 %		
Mission Proj. Participants	0	0	0	0	0	0	0.0 %
as pct. of Res. Mem	0.0 %	0.0 %	0.0 %	0.0 %	0.0 %		

Membership, Sunday School & Worship



Total Baptisms



■ Resident Members
 ■ AMWorship Attendance
 ■ Total SSEnrollment
 ■ SSAverage Attendance

2/20/2009

Notes: Percentage Change is a five year total of the change percentage for each year. This percent is only calculated when data is available for the earliest year. If data is missing or inaccurate, please report additions/changes to: Technology Services, Tennessee Baptist Convention, 615.371.2006 (phone), leaton@tnbaptist.org (email), 615.301.0602 (fax). Sources: Annual Church Profiles and Tennessee Baptist Convention (actual yearly Cooperative Program, Lottie Moon, Annie Armstrong and Golden Offering for Tennessee Missions gifts) compiled by Technology Services, TBC

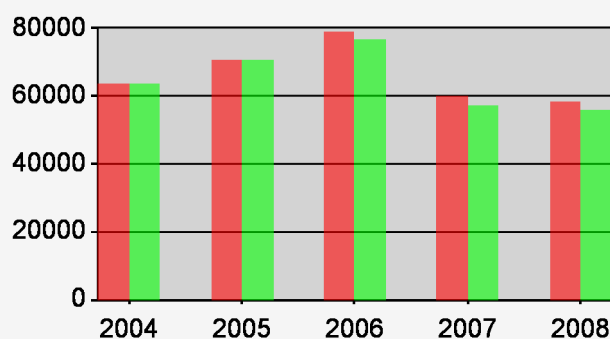
Church Trend Profile, 2004 - 2008 Financial

Church: Dutch Bottoms, Newport
SBC Number: 0290197

Association: East Tennessee
TBC Number: 00827

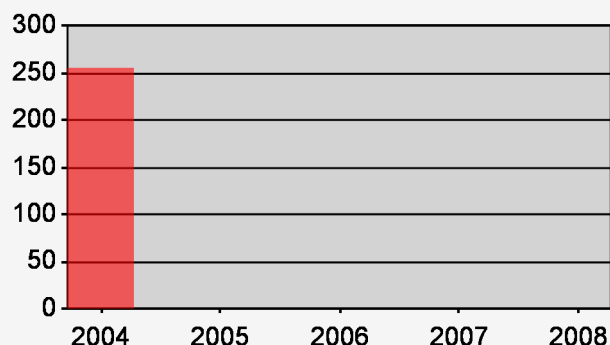
	2004	2005	2006	2007	2008	Net Change	Percent Change
Financial							
Total Receipts	\$63,684	\$70,970	\$78,887	\$59,855	\$58,627	(\$5,057)	-7.9 %
Undesignated Receipts	\$63,684	\$70,970	\$76,942	\$57,097	\$55,823	(\$7,861)	-12.3 %
Cooperative Program Gifts	\$255	\$0	\$0	\$0	\$0	(\$255)	-100.0 %
as pct. of Undesig.	0.4 %	0.0 %	0.0 %	0.0 %	0.0 %		
Associational Gifts	\$400	\$0	\$0	\$0	\$0	(\$400)	-100.0 %
as pct. of Undesig.	0.6 %	0.0 %	0.0 %	0.0 %	0.0 %		
Total Mission Expenditures	\$254	\$0	\$0	\$269	\$210	(\$44)	-17.3 %
as pct. of Tot. Receipts	0.4 %	0.0 %	0.0 %	0.4 %	0.4 %		
Annie Armstrong	\$0	\$0	\$224	\$0	\$0	\$0	0.0 %
Lottie Moon	\$0	\$0	\$0	\$0	\$210	\$210	0.0 %
Golden Offering							

Total Receipts & Undesignated Gifts

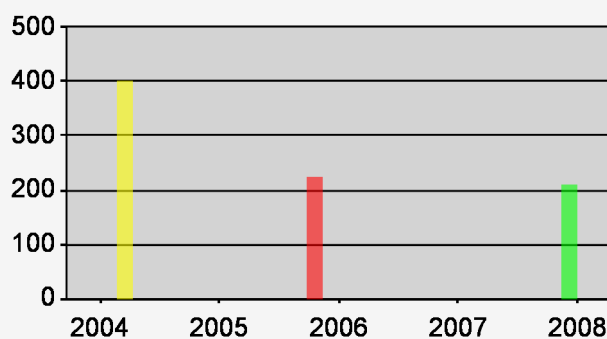


■ Total Receipts
■ Undes Gifts Offerings

Cooperative Program Gifts



Annie, Lottie, Golden & Assoc Gifts



■ Annie Armstrong
■ Lottie Moon
■ Golden Offering for T...
■ Assoc Gifts

Total Mission Expenditures



2/20/2009

Notes: Percentage Change is a five year total of the change percentage for each year. This percent is only calculated when data is available for the earliest year. If data is missing or inaccurate, please report additions/changes to: Technology Services, Tennessee Baptist Convention, 615.371.2006 (phone), leaton@tnbaptist.org (email), 615.301.0602 (fax). Sources: Annual Church Profiles and Tennessee Baptist Convention (actual yearly Cooperative Program, Lottie Moon, Annie Armstrong and Golden Offering for Tennessee Missions gifts) compiled by Technology Services, TBC