



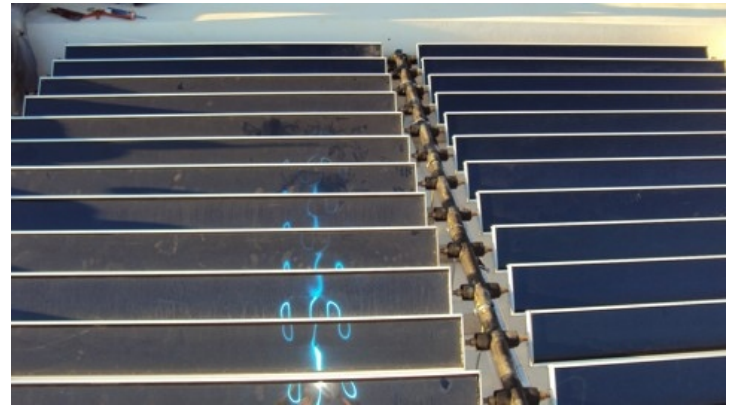
300 m2 building with Energy classification (A+)

TKM/TP4-Enersol ECO X-house 11B Marapas Antiparos

A two-store Eco house with A/C heating & cooling system, 32 thermopanel TP3, 300 L solar tank, 12+15 kW heat-pumps, solar energy floor heating of bathrooms.



Master bed & bath extended module 5m x 6m



The solar panels are equipped with a 'blue' selective highly efficient al. surface ($a=95\%$ $e=5\%$) welded on copper pipes.



The solar panels have a very low (20 cm) 'high profile' and are not visible from the street level.



Panels can preferably be arranged in symmetric arrays. The hot water outlet pipe must higher than the inlet pipe.



The panels are mounted on collector pipes with c/c 250 mm and are thus not affected at all by any strong winds.



The distributor pipe can be fixed towards a wall on one side or be mounted directly on small concrete foundations.