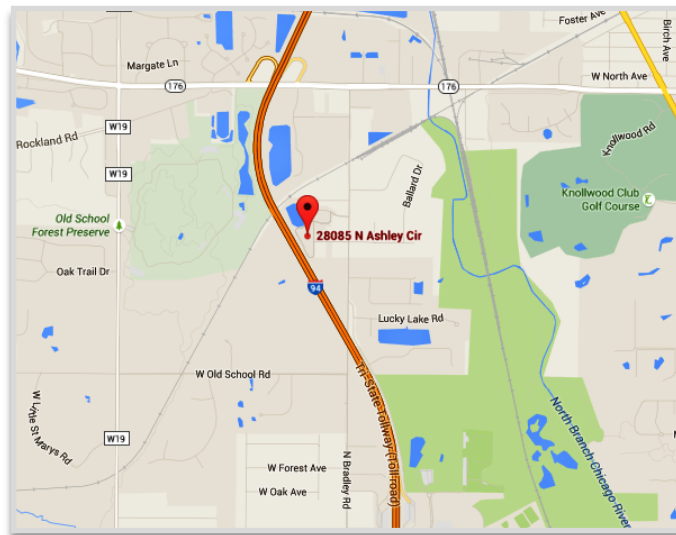


1,920 Sq. Ft. Exclusive Office Suite
28045 N. Ashley Circle • Suite 212 • Libertyville • IL 60048



AVAILABLE SPACE:	1,920 SQ. FT.
BUILDING TYPE:	PROFESSIONAL OFFICE COMPLEX
BLDG. CONSTRUCTION:	BRICK AND BLOCK, CEDAR SHAKE
LOT SIZE:	COMMON
OFFICE AREA:	ALL OFFICE
CEILING HEIGHT:	9' VARIES
POWER:	200 AMPS / 240 VOLTS
HVAC:	GAS FORCED-AIR
PARKING:	EXCELLENT – COMMON PARKING LOTS
BASE RENT:	\$13.90. SQ. FT. \$2,224.00/MONTH MODIFIED GROSS

EXCLUSIVE OFFICE SUITES IN DESIRABLE VIKING OFFICE PARK. BRIGHT OFFICE SPACE FEATURES CORNER PRIVATE OFFICE, STORAGE ROOM, 2 WASHROOMS IN SUITE, NICE GALLEY KITCHENETTE, PLUS LARGE CUBICLE AREA. CUSTOM DOORS AND TRIM. PARKING CLOSE TO OFFICE.



DIRECTIONS: I-94 TO RT. 176 EAST TO BRADLEY RD., SOUTH TO PETRONELLA DR., WEST TO ASHLEY CIRCLE TO BUILDING AND NUMBER.

Contact: Ken Eichelberger @ 847-533-7144 (Cell) / jcf.ike@sbcglobal.net

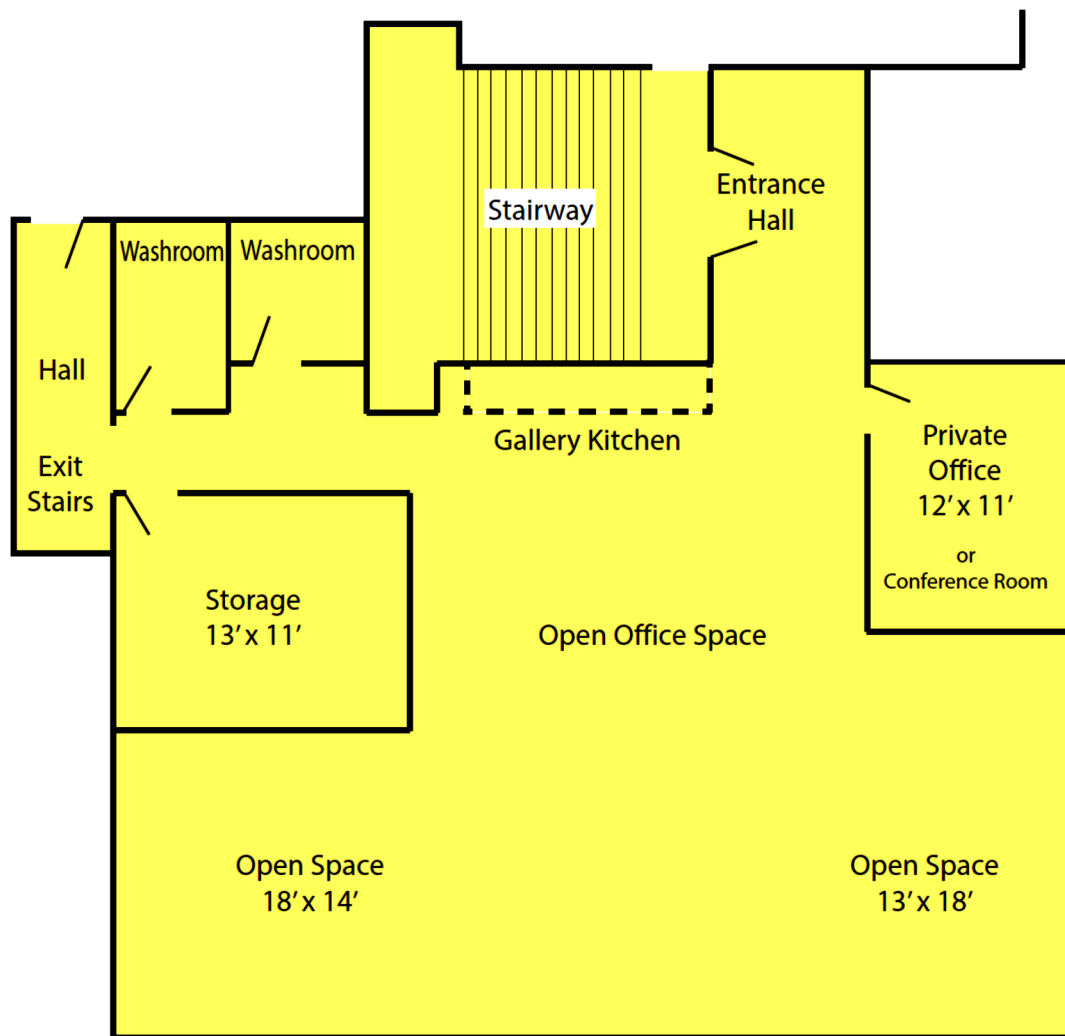
JC FORNEY INC
REALTY
Serving Clients Since 1935
Commercial Real Estate Specialists

131 West Park Avenue • Libertyville • IL • 60048
www.jcforneyrealty.com
Office: (847) 362-2000

All information contained herein is from sources deemed reliable and is submitted subject to errors, omissions, and change without notice.

FOR LEASE:

1,920 Sq. Ft. Exclusive Office Suite
28045 N. Ashley Circle ▪ Suite 212 ▪ Libertyville ▪ IL 60048



Contact: Ken Eichelberger @ 847-533-7144 (Cell) / jcf.ike@sbcglobal.net

JC FORNEY INC

REALTY

Serving Clients Since 1935
Commercial Real Estate Specialists

131 West Park Avenue • Libertyville • IL • 60048

www.jcforneyrealty.com

Office: (847) 362-2000

All information contained herein is from sources deemed reliable and is submitted subject to errors, omissions, and change without notice.