

FOR LEASE:

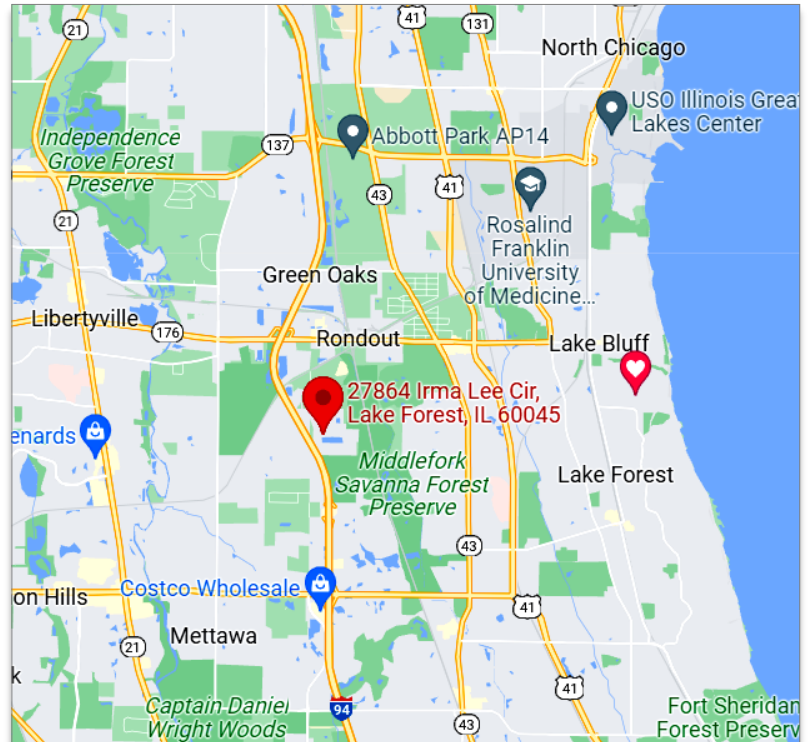
2,575 Sq. Ft. Office-Warehouse Unit

27864 ▪ Irma Lee Circle ▪ Suite 104 ▪ Lake Forest ▪ IL 60045



PROPERTY HIGHLIGHTS:

AVAILABLE SPACE: 2,575 Sq. Ft.
BASE RENT: \$10.95 Sq. Ft. Modified Gross
\$2,350.00/Month
OFFICE AREA: 686 Sq. Ft.
WAREHOUSE AREA: 1,889 Sq. Ft.
BUILDING TYPE: Office-Warehouse
BUILDING CONST.: Concrete Block/Brick
LOADING: 10' x 12' Drive in Door
CEILING HEIGHT: 10' Clear in Warehouse
POWER: 200 Amp/240 Volt 3-Phase
HVAC: Entire Space
Fully Air Conditioned
PARKING: Common Non-assigned
SPRINKLERED: Fully
AVAILABILITY: October 1, 2024



[Google Maps Link](#)

DIRECTIONS: I-94 to Route 176, east to Bradley Rd, south to Polo Trail, east to Irma Lee Circle, south to number and sign.

COMMENTS: Fully air conditioned office/warehouse. Ideal for a man cave / vehicle storage. Just off I-94 and Route 41. If you require a clean and bright work area with full temperature control, check this space out. Available October 1, 2024.

Contact: Ken Eichelberger @ 847-533-7144 (Cell) / jcf.ike@sbcglobal.net

JC FORNEY INC
REALTY
Serving Clients Since 1935
Commercial Real Estate Specialists

131 West Park Avenue • Libertyville • IL • 60048
www.jcforneyrealty.com
Office: (847) 362-2000

All information contained herein is from sources deemed reliable and is submitted subject to errors, omissions, and change without notice.

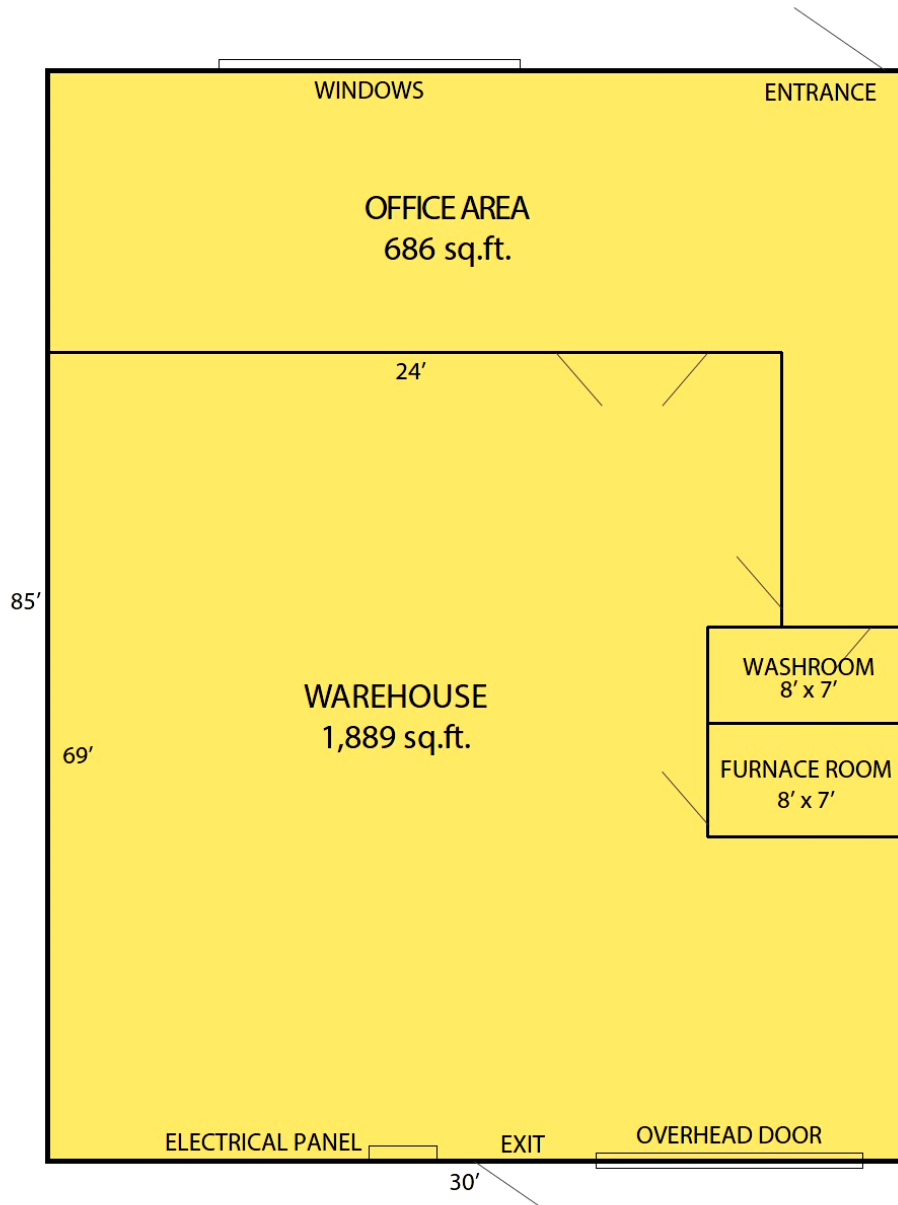
FOR LEASE:

2,575 Sq. Ft. Office-Warehouse Unit
27864 ▪ Irma Lee Circle ▪ Suite 104 ▪ Lake Forest ▪ IL 60045

OFFICE/WAREHOUSE
27864 Irma Lee Circle #104
Lake Forest, IL 60045

2,575 SQ.FT.

Fully Air Conditioned



Contact: Ken Eichelberger @ 847-533-7144 (Cell) / jcf.ike@sbcglobal.net

JC FORNEY INC
REALTY
Serving Clients Since 1935
Commercial Real Estate Specialists

131 West Park Avenue • Libertyville • IL • 60048
www.jcforneyrealty.com
Office: (847) 362-2000

All information contained herein is from sources deemed reliable and is submitted subject to errors, omissions, and change without notice.