

**FOR LEASE:**

# 1,820 Sq. Ft. Office/Warehouse Suite

31632 N. Ellis Drive • Unit 110 • Volo • Illinois 60073

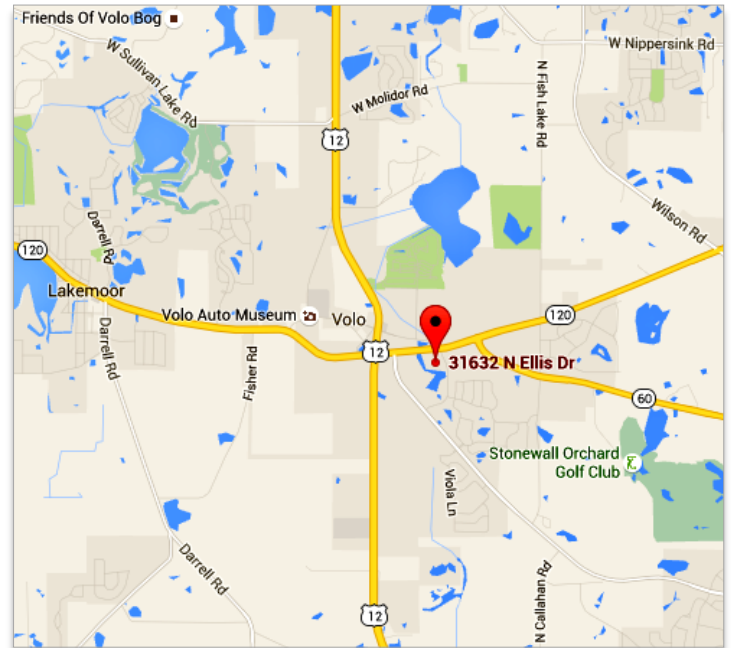


## PROPERTY HIGHLIGHTS:

**BUILDING SIZE:** 1,820 SQ. FT.  
**BUILDING TYPE:** OFFICE/WAREHOUSE  
**CONSTRUCTION:** BRICK  
**LOT SIZE:** COMMON  
**OFFICE AREA:** 192 SQ. FT.  
**LOADING:** (1) DID 10'X10'  
ELECTRIC OPENER  
**CEILING HEIGHT:** 12' IN WAREHOUSE  
**POWER:** 200/240 AMPS  
**HVAC:** GAS/FORCED AIR  
**PARKING:** COMMON PARKING  
**BASE RENT:** \$1,137/MO. GROSS  
\$7.50 SQ. FT.

## **COMMENTS:**

OFFICE/WAREHOUSE WITH SMALL OFFICE BUILDOUT OF 192 SQ. FT. MOSTLY WAREHOUSE. AVAILABLE WITHIN 30 DAYS. PRICED RIGHT.



[Google Maps Link](#)

## **DIRECTIONS:**

EAST ON RT. 120 FROM RT. 12 TO ELLIS DRIVE, SOUTH TO FIRST BUILDING ON RIGHT.

**Contact: Ken Eichelberger @ 847-533-7144 (Cell) / jcf.ike@sbcglobal.net**

**JC FORNEY INC**  
**REALTY**

*Serving Clients Since 1935*  
Commercial Real Estate Specialists

131 West Park Avenue • Libertyville • IL • 60048  
[www.jcforneyrealty.com](http://www.jcforneyrealty.com)  
Office: (847) 362-2000

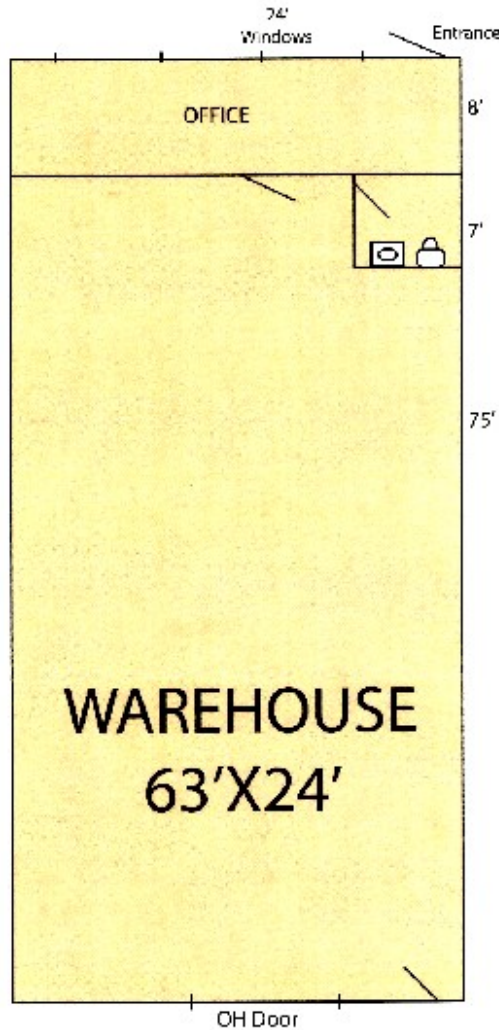
All information contained herein is from sources deemed reliable and is submitted subject to errors, omissions, and change without notice.

**FOR LEASE:**

# 1,820 Sq. Ft. Office/Warehouse Suite

31632 N. Ellis Drive • Unit 110 • Volo • Illinois 60073

## 1,820 Sq. Ft. Office / Warehouse



**31632 N. Ellis #110  
Volo, IL 60073**

**Contact: Ken Eichelberger @ 847-533-7144 (Cell) / [jcf.ike@sbcglobal.net](mailto:jcf.ike@sbcglobal.net)**

**JC FORNEY INC**

**REALTY**

*Serving Clients Since 1935*  
Commercial Real Estate Specialists

131 West Park Avenue • Libertyville • IL • 60048

[www.jcforneyrealty.com](http://www.jcforneyrealty.com)

Office: (847) 362-2000