

FOR LEASE:

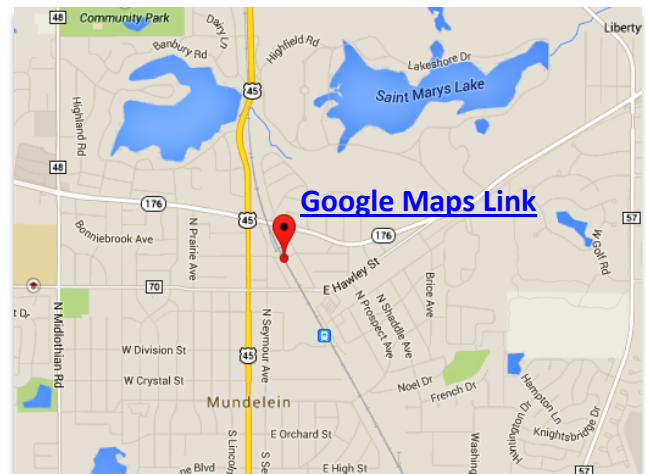
1,344 Sq. Ft. Office Suite
203 E. Park Street • Mundelein • IL 60060



BUILDING FEATURES:

AVAILABLE SPACE:	1,344 SQ. FT.
BASE RENT:	\$1,100 / MONTH GROSS
BUILDING TYPE:	OFFICE COMPLEX
BUILDING CONSTRUCTION:	BLOCK/DRYVIT
LOT SIZE:	COMMON
CEILING HEIGHT:	9' CLEAR
POWER:	200 AMPS/240 VOLT
HVAC:	GAS FORCED AIR
PARKING:	EXCELLENT-COMMON PARKING
SPRINKLERED:	FULLY WET SYSTEM
UTILITIES:	TENANT PAYS GAS & ELECTRICITY

COMMENTS: NICE OFFICE SPACE, PRIVATE ENTRANCE, 4 OFFICE AREAS, OPEN OFFICE SPACE, FRESH & CLEAN OFFICE SUITE.



DIRECTIONS: MORRIS & PARK SOUTH OF ROUTE 176, EAST OF ROUTE 45.

Contact: [Ken Eichelberger](#) @ 847-533-7144 (Cell) / jcf.ike@sbcglobal.net

JC FORNEY INC
REALTY

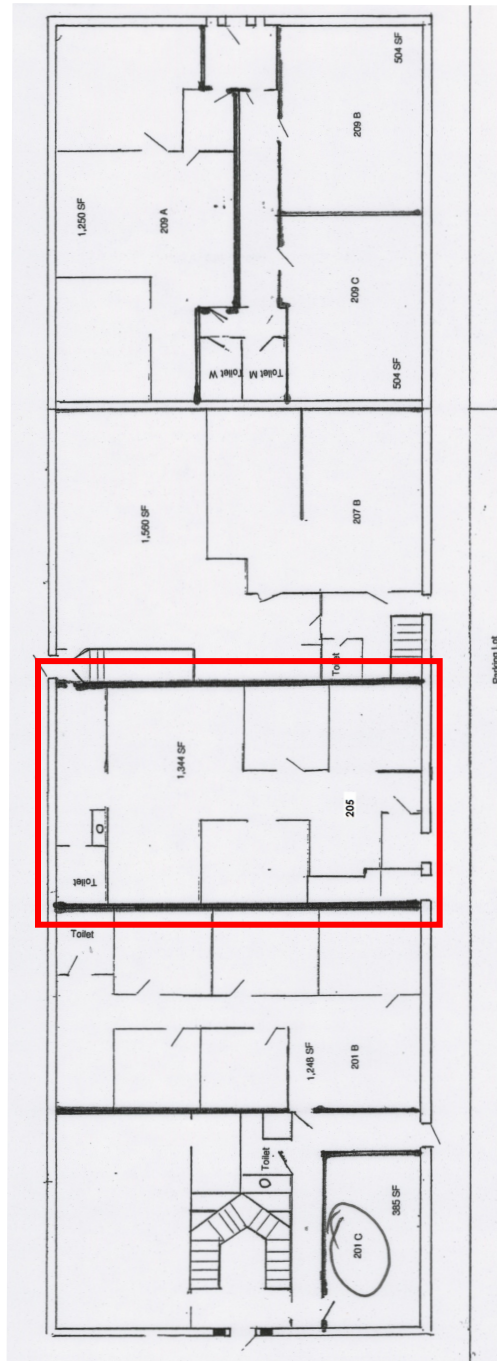
Serving Clients Since 1935
Commercial Real Estate Specialists

131 West Park Avenue • Libertyville • IL • 60048
www.jcforneyrealty.com
Office: (847) 362-2000

All information contained herein is from sources deemed reliable and is submitted subject to errors, omissions, and change without notice

FOR LEASE:

1,344 Sq. Ft. Office Suite
203 E. Park Street ▪ Mundelein ▪ IL 60060



Contact: [Ken Eichelberger](#) @ 847-533-7144 (Cell) / jcf.ike@sbcglobal.net

JC FORNEY INC
REALTY

Serving Clients Since 1935
Commercial Real Estate Specialists

131 West Park Avenue • Libertyville • IL • 60048
www.jcforneyrealty.com
Office: (847) 362-2000

All information contained herein is from sources deemed reliable and is submitted subject to errors, omissions, and change without notice