

FOR LEASE:

**860 Sq. Ft. Office Located Next to Metra Train Station
747 N. Milwaukee Ave. • Suite 102 • Libertyville • IL 60048**



PROPERTY HIGHLIGHTS:

AVAILABLE SPACE: 860 Sq. Ft.

BUILDING TYPE: Office

CONSTRUCTION: Brick/Block

UTILITIES: Tenant Pays Gas & Heat

CEILING HEIGHT: 9'

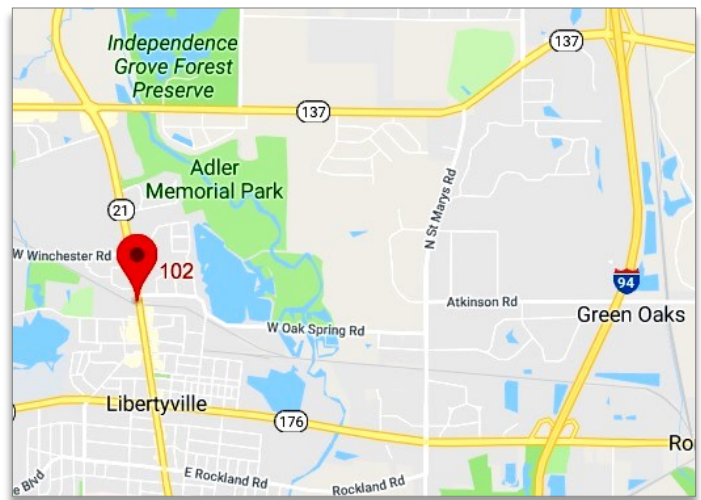
POWER: 100 Amps, 110/220 Volts

HVAC: Gas Forced Air, Central A/C

PARKING: Common Non-Assigned

BASE RENT: \$1200/Month Modified Gross

AVAILABILITY: Now



[Google Maps Link:](#)

DIRECTIONS: Route 176 to Milwaukee Avenue, North to # west side of Milwaukee just south of commuter tracks.

COMMENTS: Very nice smaller office space located next to Libertyville Train Station. Features open office area for cubicles, private office, conference room, storage area, and private washroom. Near downtown restaurants.

Contact: [Ken Eichelberger](#) @ 847-533-7144 (Cell) / jcf.ike@sbcglobal.net

JC **FORNEY** INC
REALTY

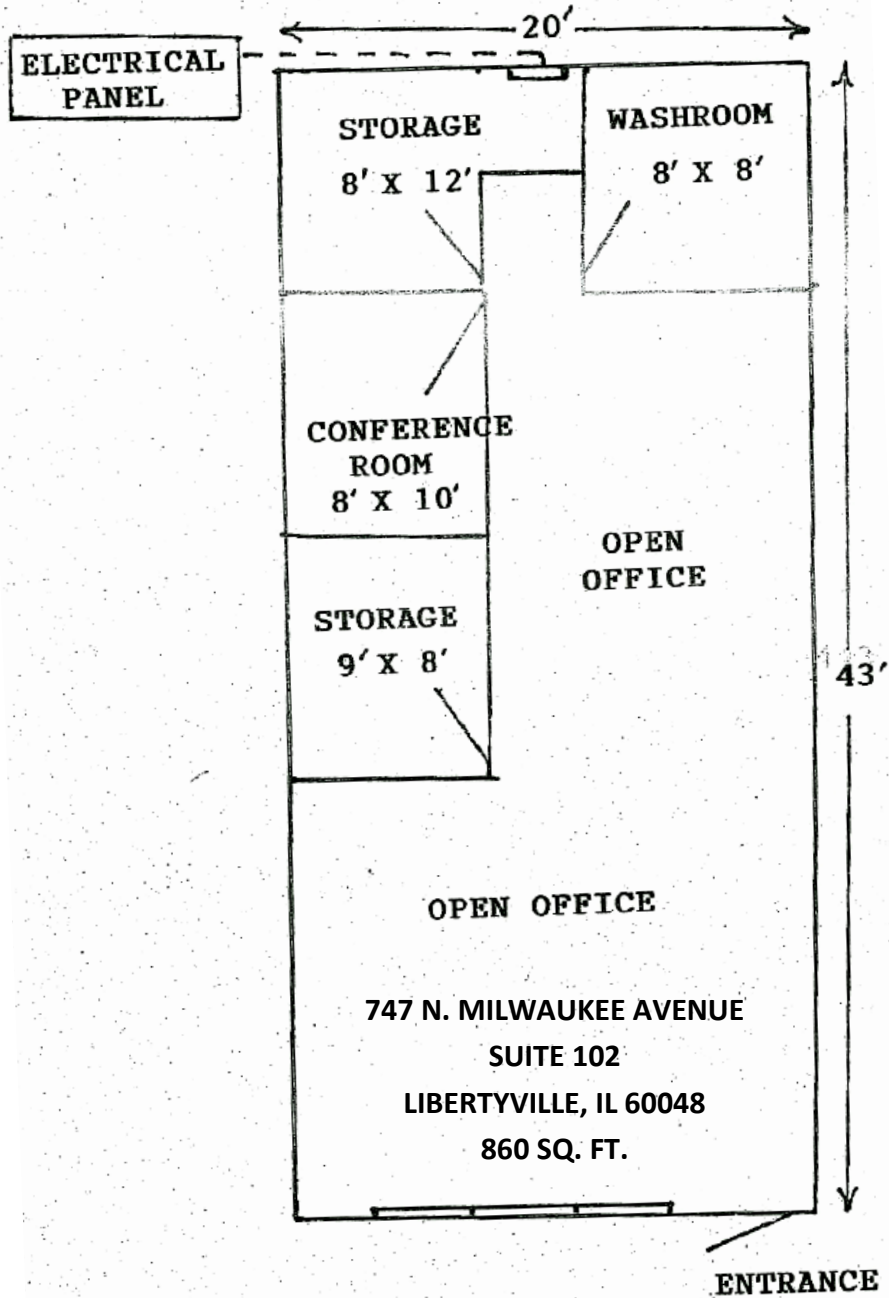
Commercial / Industrial / Investment
Serving Lake County Since 1935

131 West Park Avenue • Libertyville • IL • 60048
www.jcforneyrealty.com
Office: (847) 362-2000

All information contained herein is from sources deemed reliable and is submitted subject to errors, omissions, and change without notice.

FOR LEASE:

860 Sq. Ft. Office Located Next to Metra Train Station
747 N. Milwaukee Ave. • Suite 102 • Libertyville • IL 60048



Contact: [Ken Eichelberger](mailto:jcf.ike@sbcglobal.net) @ 847-533-7144 (Cell) / jcf.ike@sbcglobal.net

JC **FORNEY** INC
REALTY

Commercial / Industrial / Investment
Serving Lake County Since 1935

131 West Park Avenue • Libertyville • IL • 60048
www.jcforneyrealty.com
Office: (847) 362-2000