

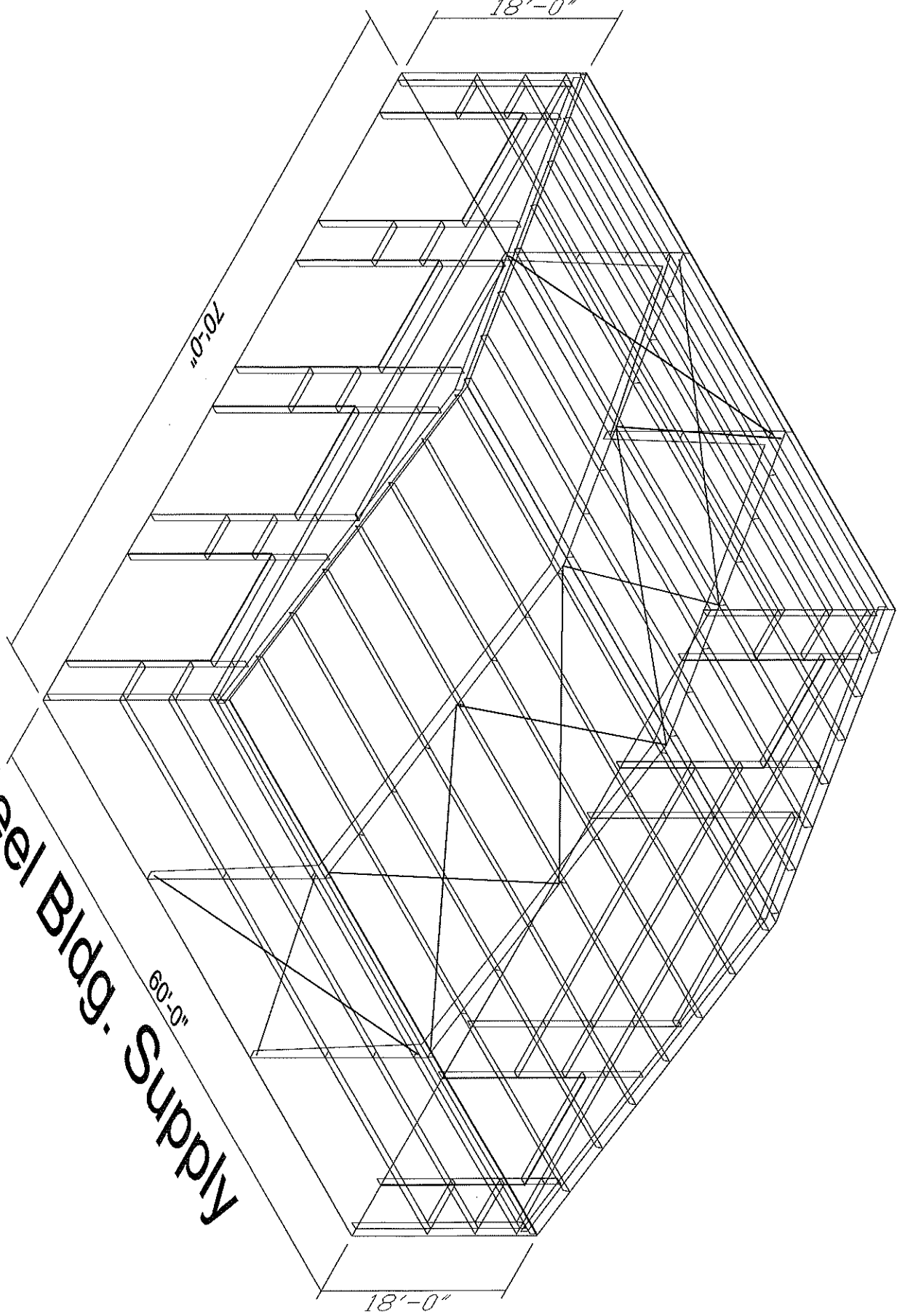
18'-0"

70'-0"

60'-0"

18'-0"

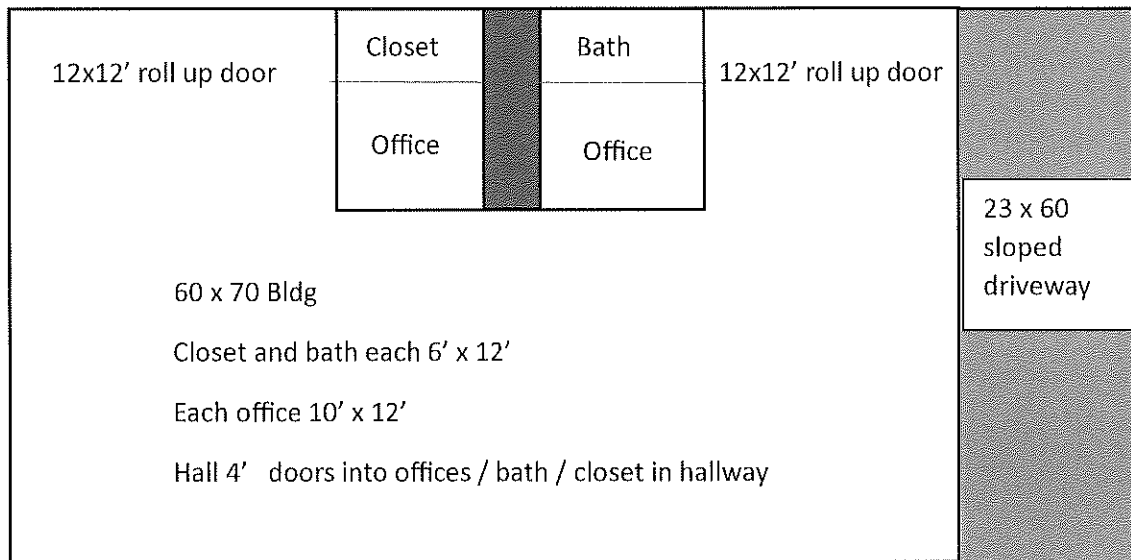
Steel Bldg. Supply



The construction specs for the Municipal Utility Building are as follows:

60' x 70' red iron weld up building constructed on a 6" reinforced Concrete Pad

Between the existing City Hall Building and the "new construction" is a 6" reinforced sloped driveway pad that is 23' x 60' ...making the total 6" depth 93 long by 60 wide



Four 12' x 14' doors on street side 1- 36" steel front entry door and 1 36" steel at back

Roof Pitch (2.0 : 12)

Red Iron 14 ga

Width 70'

Steel Purlins 16 ga

Length 60'

3/8" Structural Plate

Front Eave 18'

PBR Wall Panels ... Light Stone

Rear Eave 18'

Trim Color.... Cocoa Brown

Roof Panel 26 ga PBR

Bid does not incl. warehouse electrical

Wall Panel 26 ga PBR

Bid is to incl finishing of offices/Restroom/Closet incl electrical

3" Insulation Walls & Roof

Bay Spacing 3 at 20