



WHAT'S HAPPENING, HAZELWOOD?

Hazelwood Neighborhood Association

HNA'S NEXT MEETING:

**TUESDAY MAY 19TH, 2026
6-8PM**

**SOUTH CENTRAL NEIGHBORHOOD PLACE
4255 HAZELWOOD AVENUE**

- ADA ACCESSIBLE
- KID-FRIENDLY ENVIRONMENT
- ENGLISH & SPANISH SPEAKING EVENT



Pick up this keychain at the meet!

HELLO NEIGHBORS!
INSIDE THIS NEWSLETTER YOU'LL FIND USEFUL
RESOURCES, UPCOMING EVENTS, AND RECENT NEWS.

THE BOARD OF DIRECTORS:
-DESTINY DANIELS, PRESIDENT
-SHELBY HOFFMANN, SECRETARY
-ENIDZA TORRES, TREASURER

CONTACT US!

✉ HAZELWOODNEIGHBORHOODASSN@GMAIL

☎ (502) 450-3581

🌐 HAZELWOODNA.ORG



SHELBY HOFFMANN



HAZELWOOD NEIGHBORHOOD CLEANUP



MAY 23RD AT 2PM
MEET AT BICKNELL AND CAYUGA
SUPPLIES PROVIDED

NEW GROWTH SPRING FESTIVAL 2026



BUSINESS SPOTLIGHT

What red flags did you see in SonTia's relationship that you wish you'd spoken up about sooner?

One of the most noticeable red flags was distance—emotional withdrawal and separation from family and support systems. Looking back, those shifts were significant indicators that something wasn't right. It reinforces how important it is to trust our instincts and speak up, even when it feels uncomfortable.

Why do you believe early mandatory counseling for abusers could have changed everything?

There was a known history of abusive behavior prior to this relationship. Early, mandatory intervention could have addressed the root causes within the abuser—helping them confront and understand their behavior before it escalated further. Accountability paired with professional support has the potential to interrupt cycles of abuse and protect future victims.

How do you plan to support both victims and the people doing the harming?

Our approach is two-fold. For victims, we are building safe, supportive environments where they can heal, rebuild, and thrive. For those who cause harm, we aim to connect them with structured abuse counseling programs that address the underlying issues driving their behavior. The goal is not just intervention, but transformation—for individuals and communities.

What's the biggest gap in resources for domestic violence survivors right now?

The most critical gap is housing. There are simply not enough safe, long-term places for survivors to go where they can stabilize, heal, and rebuild their lives. Without that foundation, true recovery becomes much more difficult.

How can regular people help without putting themselves in danger?

Awareness and action go a long way. If you see something, say something—silence protects the abuser, not the victim. People can help by making a call, offering support, donating, volunteering, or simply educating themselves and others. Safe intervention starts with refusing to ignore the signs.

Can you tell us what SonTia Strong is all about and what inspired you to start it?

SonTia Strong was born out of profound loss, but also a deep determination to create change. It represents strength, awareness, and action against domestic violence. The mission is to ensure that no family has to endure the same pain without support, resources, and a path forward.

What's the mission of your organization and how has it evolved since you began?

Our mission is to break the silence surrounding domestic violence while providing real, sustainable solutions for survivors. What began as advocacy has grown into a vision for structured support systems—housing, rehabilitation, and community-based resources that empower individuals to move from surviving to thriving.

What are some of the biggest challenges you've faced in building and growing SonTia Strong?

One of the greatest challenges is building the infrastructure needed to meet such a large and urgent need—especially housing and resource development. Another is shifting mindsets, helping communities understand the importance of addressing abuse openly rather than ignoring it.

Can you walk us through one of your most impactful success stories?

While the organization is still growing, every connection made, every conversation started, and every person reached represents impact. Success is not only measured in large milestones, but in each life touched and each moment where silence is replaced with action.

How do you measure success at SonTia Strong?

Success is measured by lives changed—by individuals who move from crisis to stability, from fear to empowerment. It's also seen in increased awareness, community engagement, and the expansion of resources that directly serve survivors.

What's one thing people often misunderstand about your organization?

Some may think this is only about advocacy or awareness. In reality, it's about building real solutions—creating safe spaces, sustainable systems, and long-term support that addresses the full scope of domestic violence.

How can someone get involved, whether through volunteering, donating, or partnering?

There are many ways to get involved. People can donate, volunteer their time, partner with us, come to our upcoming events, or simply help spread awareness. Even one action—one call, one conversation—can make a difference.

What's next for SonTia Strong? Any exciting projects or goals on the horizon?

The vision is to develop staggered housing properties across the United States, complete with intake centers in multiple states. These spaces will be self-sustaining—utilizing solar power, rainwater systems, and on-site food sources like gardens and livestock. This ensures that funding goes directly to survivors. Long-term, the goal is to expand nationwide and eventually globally, because domestic violence is not just a local issue—it's a worldwide crisis.

About our events, the first tasting or flight is free with your ticket purchase and anyone who buys their tickets early will receive a \$25 voucher to go towards an auction item at the event. (One voucher per ticket purchased, can only use one voucher per item)



ITEMS NEEDED

SUPPORT SonTia Strong

SonTia Strong is seeking donations for our upcoming fundraiser!

- Do you have:
- Gift cards or merchandise?
- Event or sports tickets?
- A service you can offer (hair, fitness, tutoring, etc.)?
- Vacation stays or experiences?
- Small business products or services?

Anything big or small will help support SonTia Strong and our mission.

To donate or learn more, visit:

SonTiaStrong.org

Healing takes time. #SonTiaStrong
♥ Amia Mattered



Event Sponsorship Opportunities

We are a non-profit organization seeking sponsors for our upcoming events. A \$50 tax deductible donation gets you:

- ✓ Promotional signage at the event
 - ✓ Your logo or information on every flier or post made for that event
- Donations are tax deductible. —

Upcoming Events

- Wine Tasting & Silent Auction
- Bowling Tournament
- Memorial Walk / Color Run

We battle domestic violence by challenging the laws surrounding DV, help people survive domestic violence, and then help them learn to thrive. We do this because on July 7th, 2025, the lives of SonTia Simmons and Amia Cox were cut short due to domestic violence, and it lit a fire in their loved ones to be the change.

Interested? Have questions? Contact Bailey!

502-408-7760 bailey@SonTiaStrong.org



Nearing Completion

Iroquois Senior Living Apartments

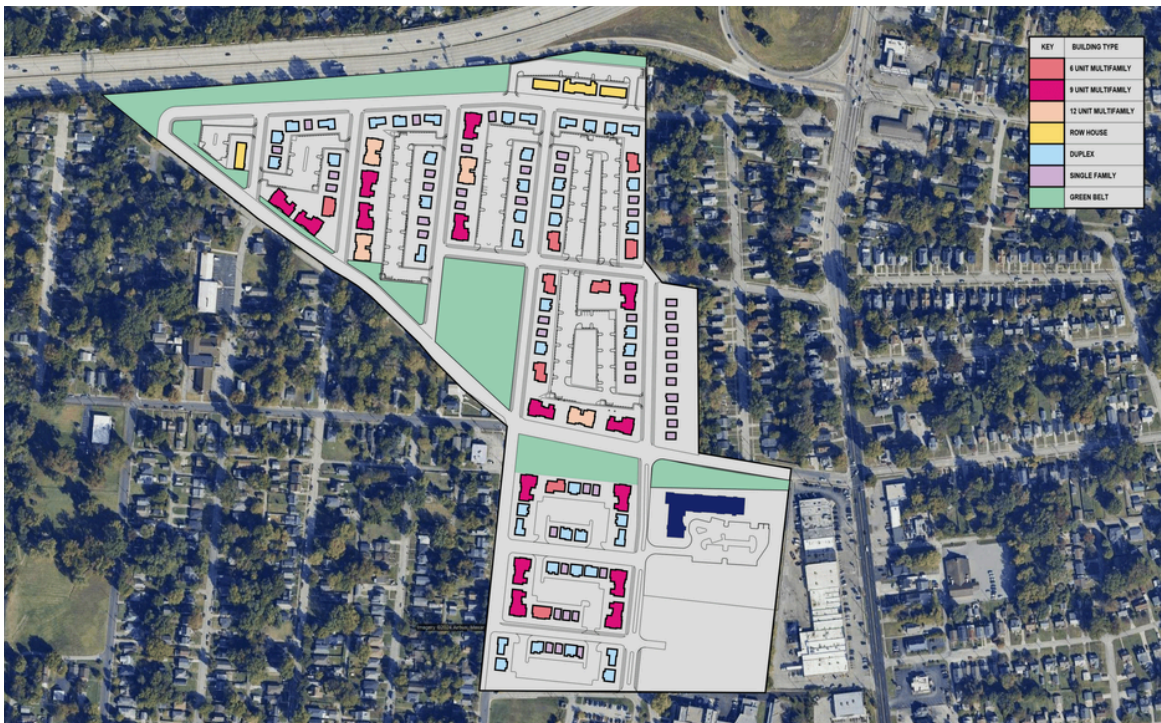


WDRB.com

This building will offer 60 modern, highly accessible, and affordable apartments specifically for adults who are 55+ years of age. It will support a "car-free" living near Hazelwood Shopping Center and includes, among other features, fully ADA-compliant units, secure entrances, a café, and landscaped, walkable green spaces within our newly revitalized community.

What's Next?

Hazelwood Grove



scbarchitects.com



Presidential Letter

DEAR HAZELWOOD NEIGHBORS,

I HOPE THIS MESSAGE FINDS YOU WELL AS WE WELCOME THE WARMER DAYS OF SPRING IN OUR VIBRANT COMMUNITY.

WHAT A WONDERFUL SUCCESS OUR FIRST ANNUAL NEW GROWTH SPRING FESTIVAL WAS ON SATURDAY, APRIL 18, 2026! THE TURNOUT, ENERGY, AND SENSE OF TOGETHERNESS TRULY REFLECTED THE SPIRIT OF HAZELWOOD. THANK YOU TO EVERYONE WHO ATTENDED, VOLUNTEERED, PERFORMED, OR HELPED MAKE THE DAY SPECIAL. IT WAS INSPIRING TO SEE FAMILIES, FRIENDS, AND NEIGHBORS COMING TOGETHER TO CELEBRATE NEW GROWTH IN OUR NEIGHBORHOOD—BOTH LITERALLY IN OUR GARDENS AND FIGURATIVELY IN OUR COMMUNITY BONDS.

WE ARE ALSO PROUD TO SHARE THAT THE MAYOR'S OFFICE ISSUED A FORMAL PROCLAMATION RECOGNIZING THE NEW GROWTH SPRING FESTIVAL. THIS ACKNOWLEDGMENT HIGHLIGHTS THE POSITIVE IMPACT OF COMMUNITY-LED EVENTS LIKE OURS AND REINFORCES OUR NEIGHBORHOOD'S COMMITMENT TO BUILDING A STRONGER, MORE CONNECTED HAZELWOOD.

AS WE LOOK AHEAD, LOUISVILLE IS BUZZING WITH EXCITEMENT FOR THE 152ND KENTUCKY DERBY ON SATURDAY, MAY 2, 2026. WHETHER YOU'RE HEADING TO CHURCHILL DOWNS, HOSTING A GATHERING AT HOME, OR SIMPLY ENJOYING THE FESTIVE ATMOSPHERE AROUND THE CITY, IT'S A GREAT TIME TO CELEBRATE OUR CITY'S TRADITIONS. LET'S REMEMBER TO BE SAFE, SUPPORT LOCAL BUSINESSES, AND REPRESENT HAZELWOOD PROUDLY DURING DERBY WEEK.

DURING RECENT CANVASSING EFFORTS FOR OUR NEIGHBORHOOD WATCH PROGRAM, SEVERAL RESIDENTS RAISED IMPORTANT CONCERNS. TWO ISSUES THAT CAME UP REPEATEDLY WERE THE NEED FOR IMPROVED STREET LIGHTING IN CERTAIN AREAS AND QUESTIONS ABOUT THE POSSIBILITY OF ADDING A SOBER LIVING HOUSE IN THE COMMUNITY. YOUR INPUT IS VALUABLE, AND THE ASSOCIATION IS ACTIVELY LISTENING AND EXPLORING WAYS TO ADDRESS THESE MATTERS WITH CITY PARTNERS AND STAKEHOLDERS. WE WILL CONTINUE TO KEEP YOU UPDATED AS WE WORK ON SOLUTIONS THAT KEEP HAZELWOOD SAFE AND SUPPORTIVE FOR ALL RESIDENTS.

PLEASE SAVE THE DATE FOR OUR NEXT NEIGHBORHOOD ASSOCIATION MEETING ON MONDAY, MAY 19, 2026. WE WANT THIS GATHERING TO REFLECT WHAT MATTERS MOST TO YOU. WHAT TOPIC WOULD YOU LIKE US TO FOCUS ON? SAFETY AND NEIGHBORHOOD WATCH UPDATES? COMMUNITY RESOURCES? LOCAL DEVELOPMENT? BEAUTIFICATION PROJECTS? OR SOMETHING ELSE ENTIRELY? PLEASE REACH OUT WITH YOUR SUGGESTIONS BY EMAILING US OR DROPPING A NOTE AT OUR NEXT EVENT. YOUR IDEAS WILL HELP SHAPE A PRODUCTIVE AND RELEVANT MEETING.

TOGETHER, WE ARE GROWING STRONGER EVERY DAY. THANK YOU FOR YOUR CONTINUED INVOLVEMENT AND DEDICATION TO MAKING HAZELWOOD A GREAT PLACE TO CALL HOME.

Free & Discounted Services for WIC or SNAP Recipients



Museums & Cultural Attractions

Aviation Museum of Kentucky - Admission is \$3 per person for EBT cardholders.

Kentucky Science Center (Louisville) - Offers a free Community Access Membership for SNAP/WIC recipients. Benefits include unlimited admission for two adults and up to four children, plus two guest passes. Apply online or in person with your SNAP/WIC card and photo ID.

KMAC Museum (Louisville) - Provides free admission to all EBT cardholders and SNAP/WIC recipients.

Lexington Children's Museum - Admission is \$3 per person for EBT cardholders.

Louisville Zoo - Provides a discounted Family Membership for \$50 (regularly \$139) to SNAP/WIC participants. Includes admission for two adults and up to four dependent children. Purchase in person with your SNAP/WIC card and matching photo ID.

Mary Todd Lincoln House (Lexington) - Offers free admission to EBT cardholders and their immediate household members.

Speed Art Museum (Louisville) - Through the "Speed for All" program, offers free memberships to EBT cardholders. Membership includes free admission for two adults and all children under 18 in the household, free parking, and discounts on special programs.



Retail & Subscription Services

Amazon Prime Access - SNAP and WIC recipients can get Amazon Prime for \$6.99/month (regularly \$14.99). Benefits include free shipping, Prime Video, and more.

Walmart+ Assist - Eligible for SNAP/WIC recipients at \$6.47/month or \$49/year (50% off). Includes free delivery, fuel discounts, and Paramount+ streaming.



Food & Farmer's Market Programs

Kentucky Double Dollars (KDD) - Matches SNAP/WIC purchases at participating farmers markets. For example, spend \$12 in SNAP benefits and receive an additional \$12 to spend on Kentucky-grown produce.

WIC Farmers Market Nutrition Program - Provides \$30 vouchers each summer to eligible WIC recipients for purchasing locally grown fruits, vegetables, and herbs at participating farmers markets.



Internet & Phone Service

Lifeline Program - Offers up to \$9.25/month discount on phone or internet services for eligible low-income consumers, including SNAP/WIC participants.

Discounted Internet Services - Providers like AT&T and Comcast offer internet plans for \$10/month to SNAP/WIC recipients.



Transportation & Other Services

Transportation Discounts - Some cities offer reduced fares for SNAP recipients. Check with your local transit authority Public for availability.

YMCA Memberships - Many YMCAs offer reduced membership rates for SNAP participants, providing access to fitness facilities and programs.

COMMUNITY MINISTRIES

Cheyenne's Custom Creations

Follow Me On Facebook!

Big Creativity, Handmade Magic
 Custom piñatas • banners • beaded pens • keychains
 • cake/ cupcake topper • custom games • character Decor
 Whatever you have in mind I can make
 just give me some ideas and we can get to work!
 MADE WITH LOVE.

LAWN CARE

- MOWING
- TRIMMING
- EDGING
- BLOWING
- YARD CLEANUP

502-804-7288

we take cash, chime

Cashapp
Paypal
Venmo

A BEAUTIFUL YARD Starts Here!



HAZELWOOD
LOUISVILLE KY

Hazelwood Neighborhood Association Membership Application

Hazelwood is a neighborhood on the south side of Louisville, Kentucky, United States. Its boundaries are Manslick Road to the west, I-264 to the north, Taylor Boulevard to the east, and Hazelwood Avenue to the south.

Join free for the first year. Annual membership dues of \$10.00 (tax deductible) will be collected December 1-10 of the following year you joined. Dues paying members will receive one qualifying vote per household. Dues may be paid by cash, check, money order to Hazelwood Neighborhood Association Incorporated. Dues are used to pay for public events, administrative cost, and reserve funds. By signing below, you agree to these terms.

Name: _____

Email: _____ Phone: _____

Check the box of the street you live on: Old Manslick Rd. Taylor Blvd. Bluegrass Ave.

Woodruff Ave. W. Ashland Ave. Lentz

Ave. Hazelwood Ave. Wheeler Ave. Craig Ave. La Salle Ave. Churchman Ave.

Parthenia Ave. Beech Ave. Bicknell Ave. Alma Ave. Locust Ave. Old Bluegrass Ave.

Are you a young adult age 12-17? Yes No If you checked yes, would you like to join the Youth Advisory Board Yes No

If you are an adult age 18 and older, would you like to be considered for an officer position on the board? Yes No

Friend of Hazelwood. IF you live outside the boundaries of our neighborhood and would still like to be a member and supporter, check here. Please list your street name here:

_____.

Are you a business owner? Yes No. If yes list name of business to be shown in our business spotlight of our newsletter. _____

Signature of Member Parent/ Guardian of Young Adult Date

O: 4034 Churchman Ave.
Louisville, KY 40215

P: (502) 450-3581
W: www.hazelwoodna.org