

T-Mobile Data Center (PDX) – T-Mobile – Pacific Northwest

Project Description: Johnson Construction Consulting LLC was engaged in the electrical oversight, conduit layout, and panel commissioning of T-Mobile's high-performance data center in the Pacific Northwest. Our team supported this project from rough-in through live testing and energization, ensuring mission-critical uptime for telecommunications operations.

Johnson Construction Consulting LLC worked hand-in-hand with GC and client inspectors to deliver results that surpassed compliance and timing expectations. This facility now supports ongoing operations with redundant and isolated power paths.

Services Provided:

- Cable tray installation
- High-voltage breaker coordination, and
- Elevated electrical work in tight overhead raceways.

Completion Date: 2022

A visual overview of electrical system installation, underfloor work, conduit layout and commissioning support provided by Johnson Construction Consulting LLC at a major T-Mobile Data Center in the Pacific Northwest

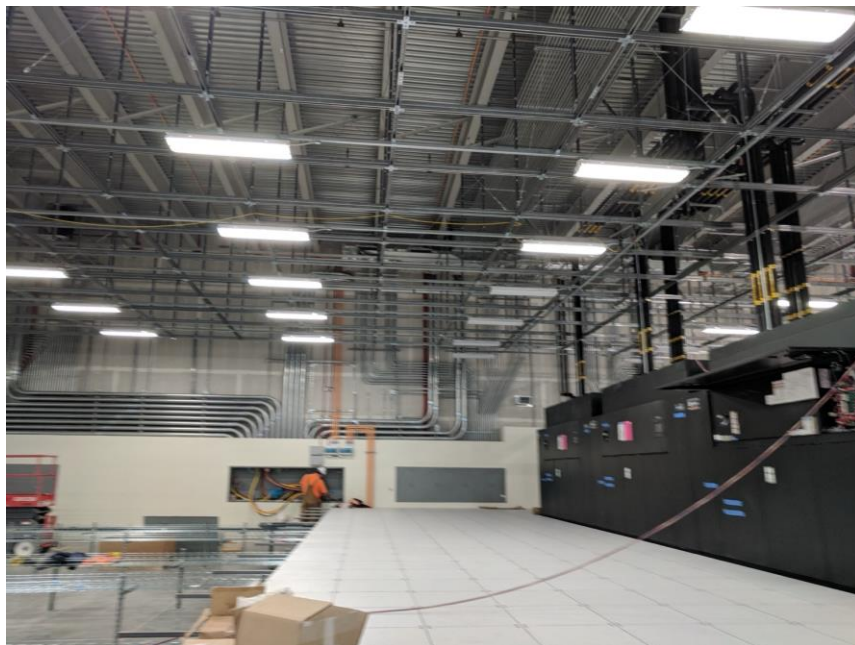


Figure: Electrical raceway, switchgear, and power systems inside T-Mobile's mission-critical facility



Figure: Electrical raceway, switchgear, and power systems inside T-Mobile's mission-critical facility.



Figure: Electrical raceway, switchgear, and power systems inside T-Mobile's mission-critical facility.

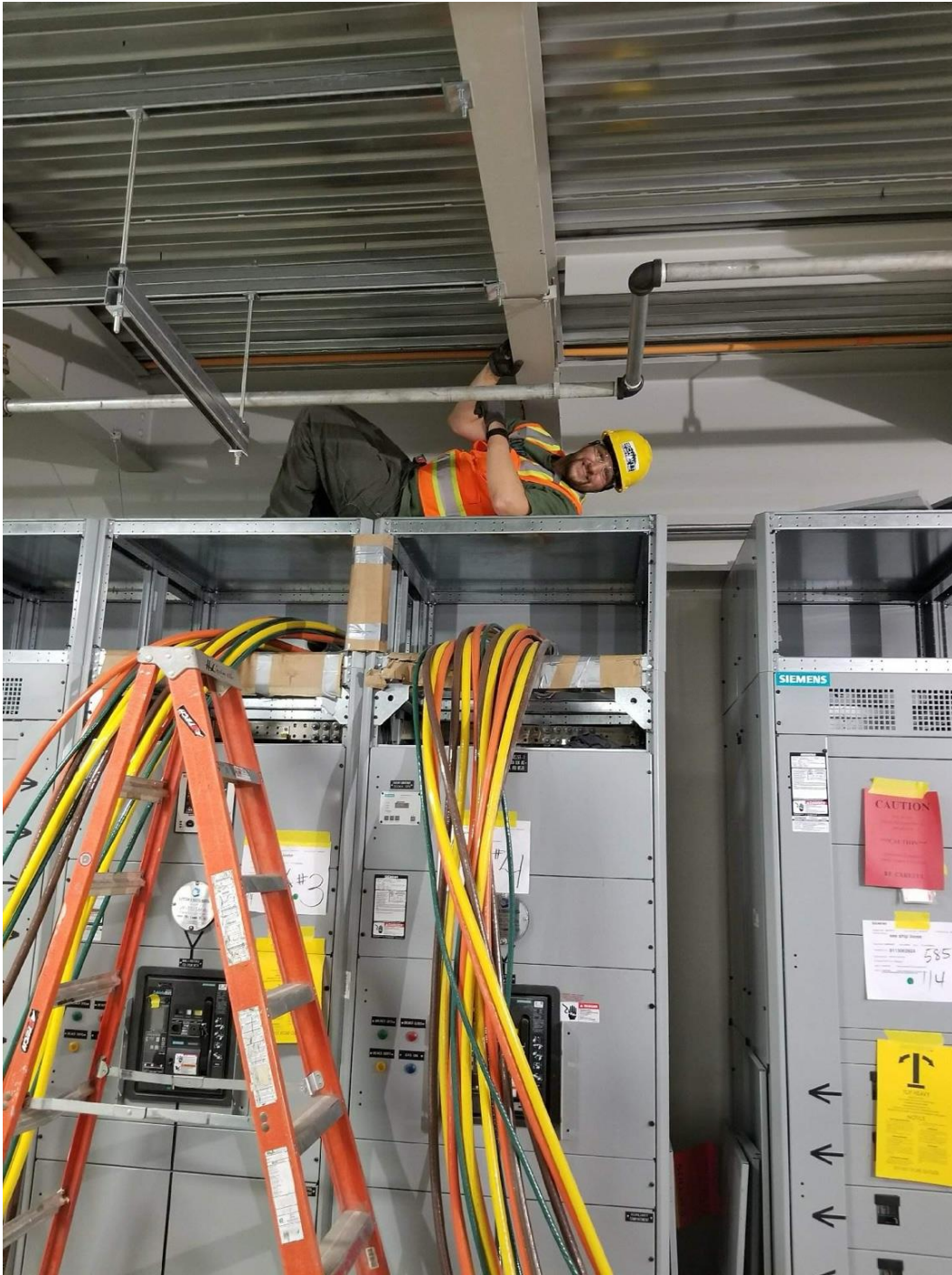


Figure: Electrical raceway, switchgear, and power systems inside T-Mobile's mission-critical facility.

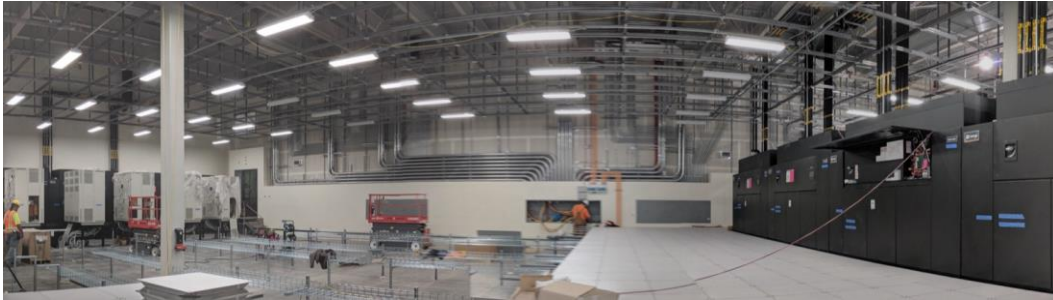


Figure: Electrical raceway, switchgear, and power systems inside T-Mobile's mission-critical facility.

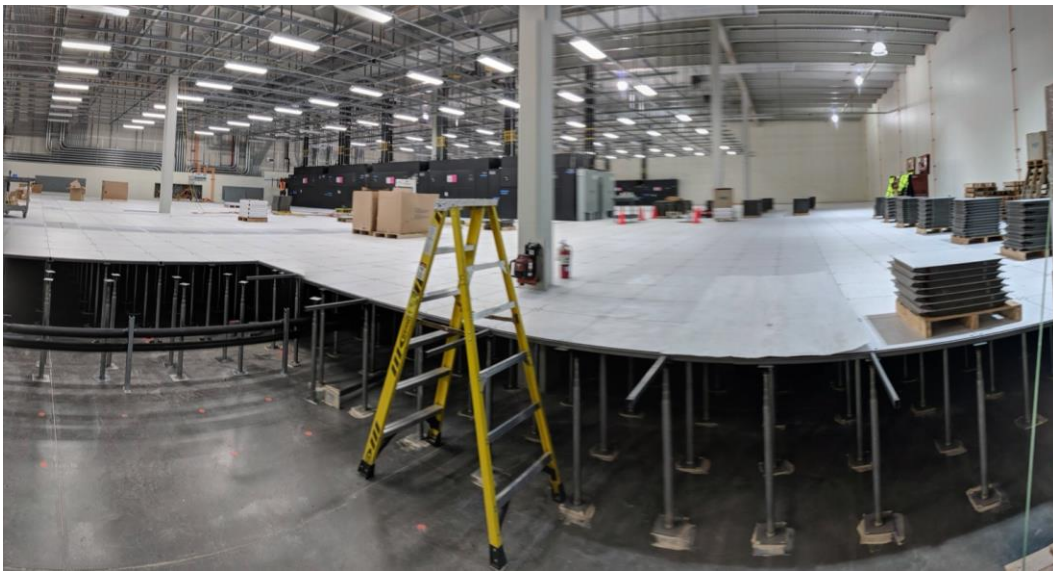


Figure: Electrical raceway, switchgear, and power systems inside T-Mobile's mission-critical facility.