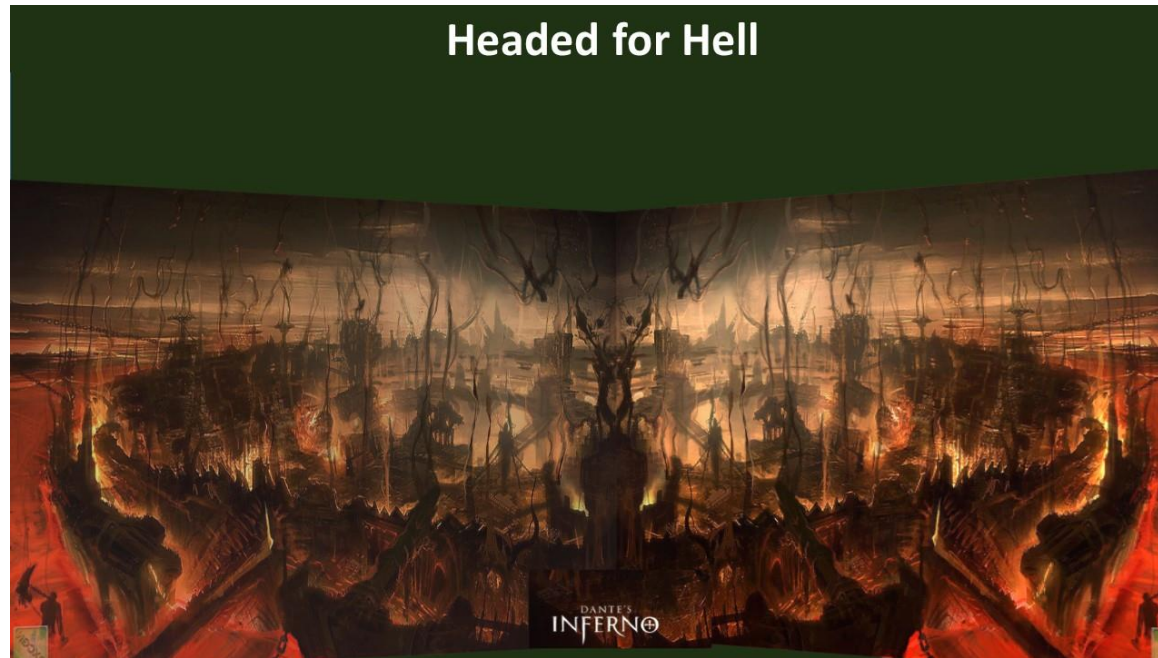
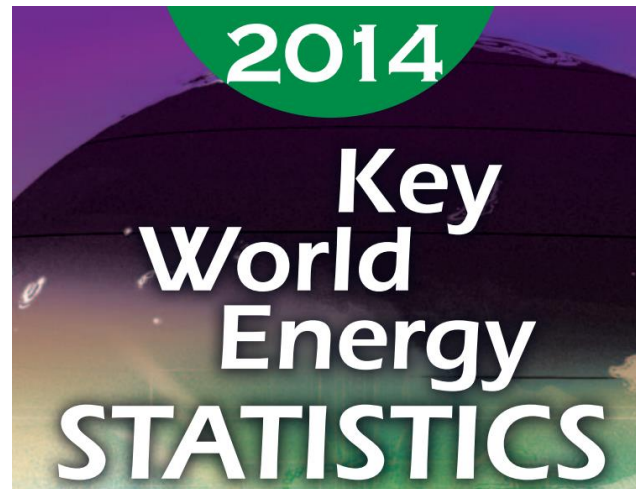


# 2014 World Energy Stats 1971-2012



# International Energy Agency

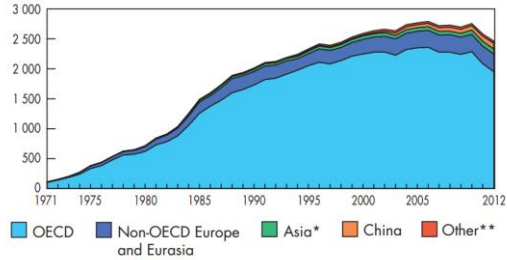
## Key World Energy Statistics 2014



# PRODUCTION

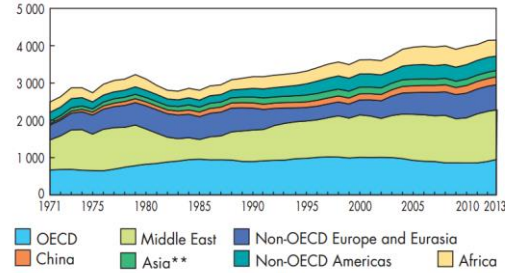
## Nuclear Production

Nuclear production from 1971 to 2012 by region (TWh)



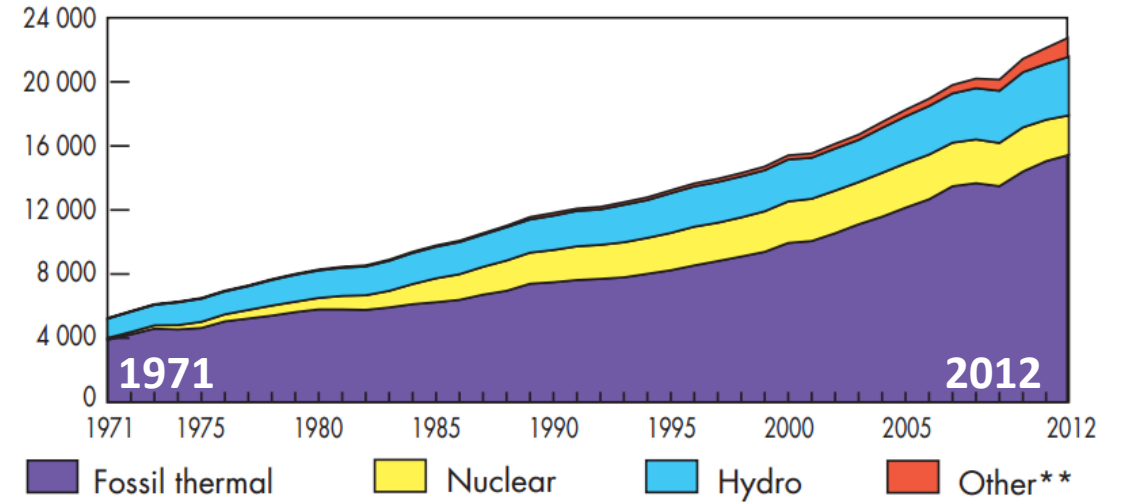
## Crude Oil Production

Crude oil\* production from 1971 to 2013 by region (Mt)



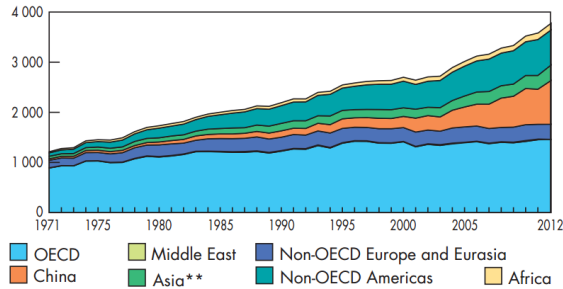
## Electricity Generation by Fuel

World electricity generation\* from 1971 to 2012 by fuel (TWh)



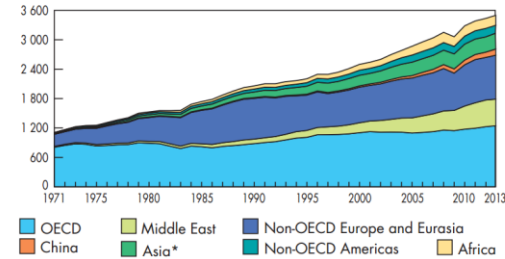
## Hydro Production

Hydro production\* from 1971 to 2012 by region (TWh)



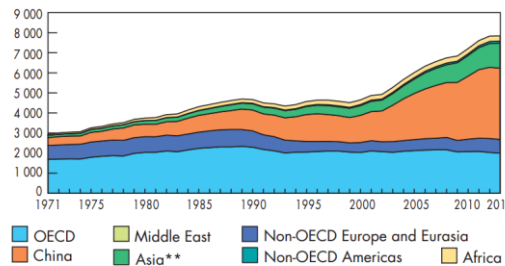
## Natural Gas Production

Natural gas production from 1971 to 2013 by region (billion cubic metres)



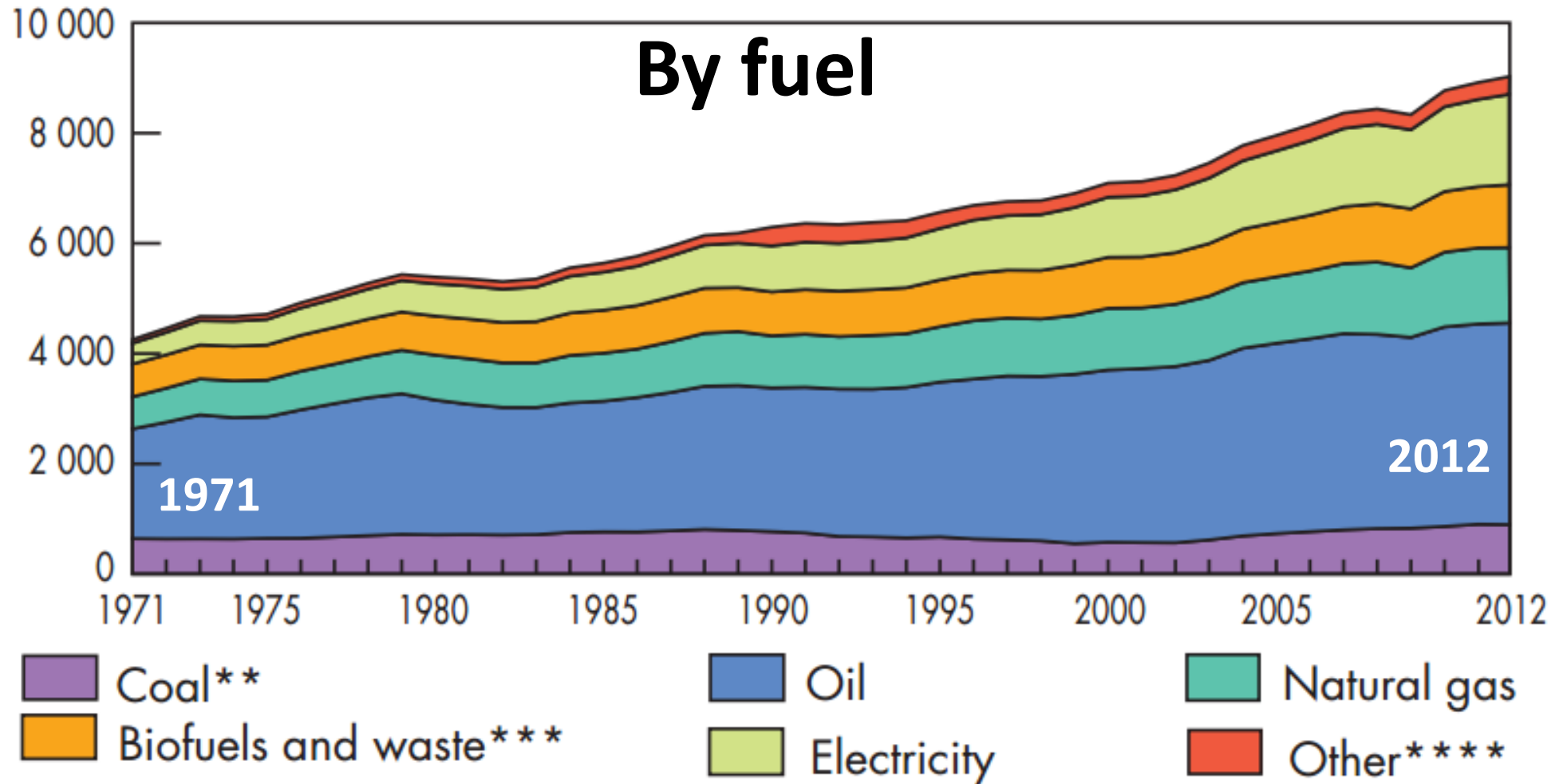
## Coal Production

Coal\* production from 1971 to 2013 by region (Mt)



\*\*Includes geothermal, solar, wind, heat, etc

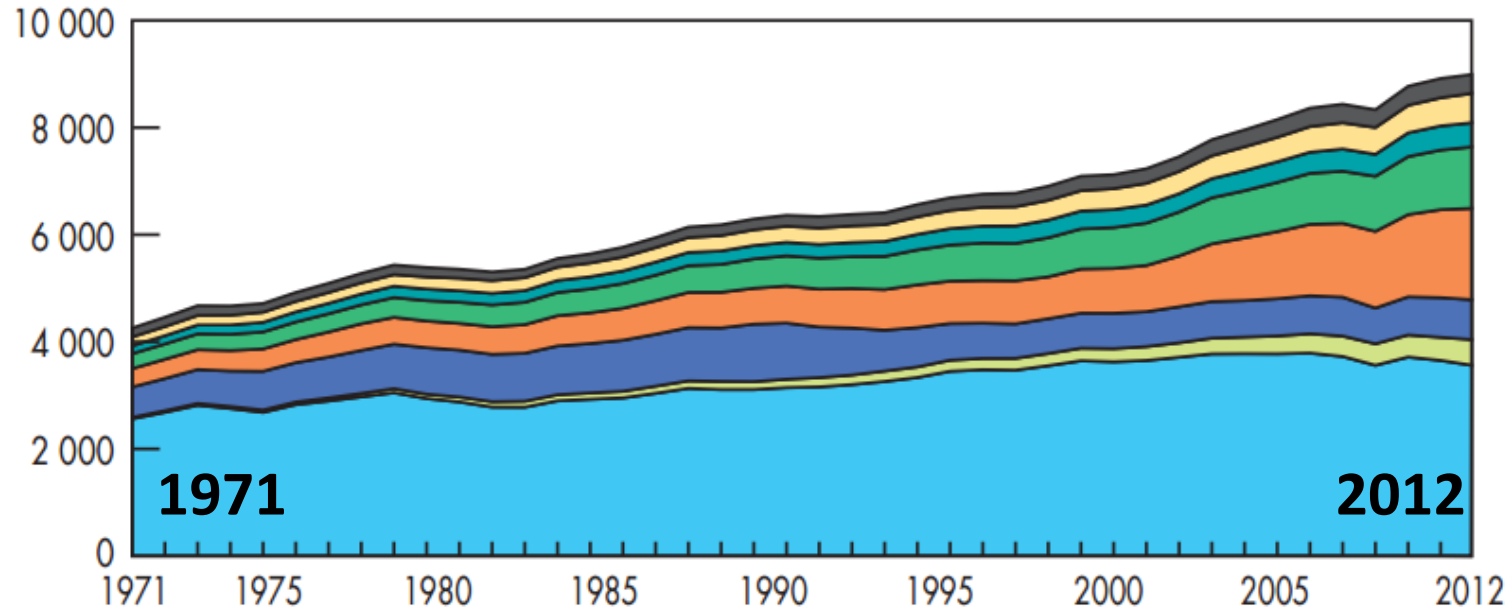
# World\* total final consumption from 1971 to 2012 by fuel (Mtoe)



\*\*\*\*Includes geothermal, solar, wind, heat, etc

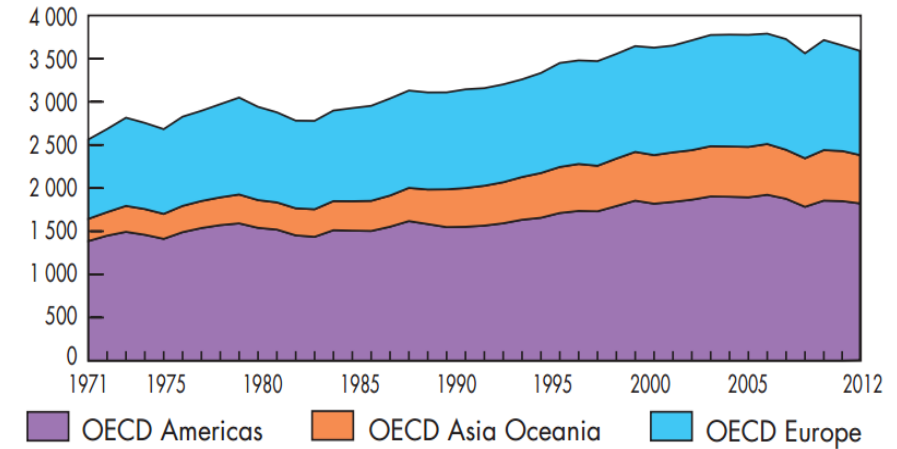
# World total final consumption\* from 1971 to 2012 by region (Mtoe)

World total final consumption\* from 1971 to 2012  
by region (Mtoe)



## OECD

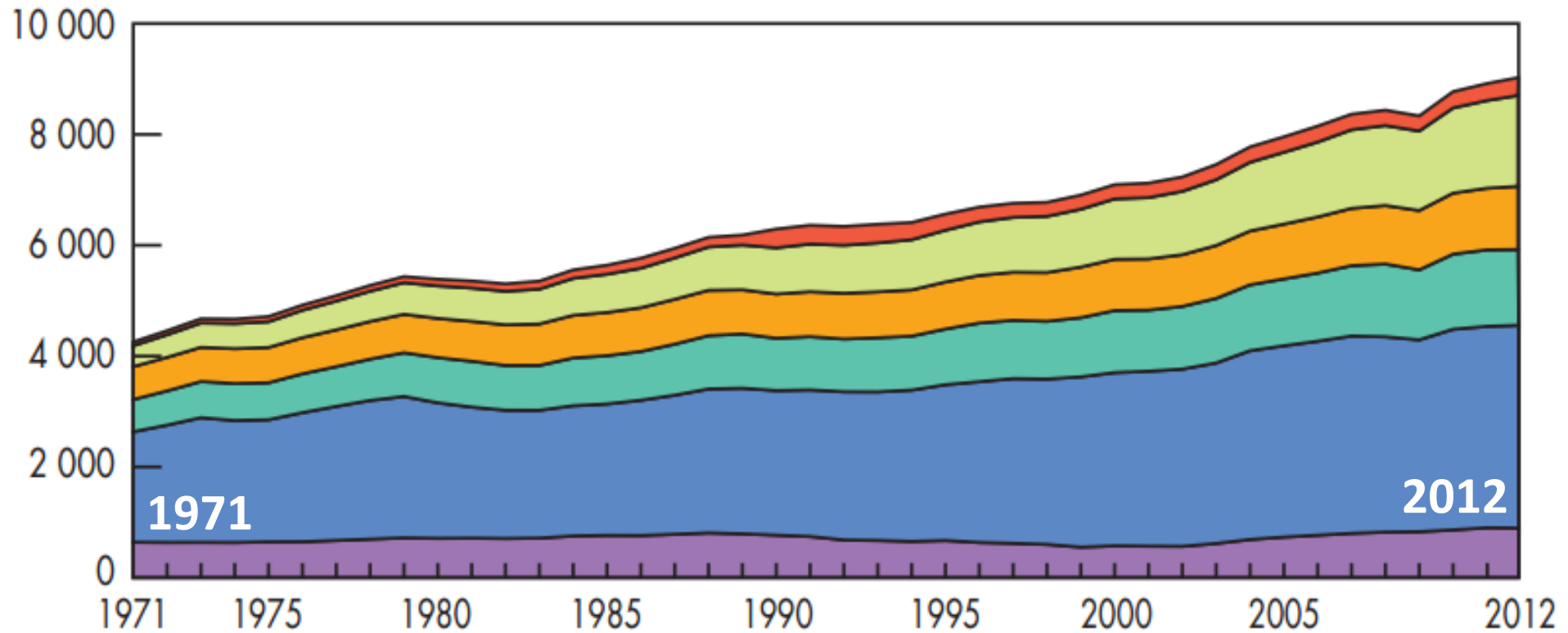
OECD total final consumption from 1971 to 2012  
by region (Mtoe)



# TOTAL FINAL CONSUMPTION

## Total world energy consumption by fuel 1971-2012

World\* total final consumption from 1971 to 2012  
by fuel (Mtoe)



Coal\*\*

Biofuels and waste\*\*\*

Oil

Electricity

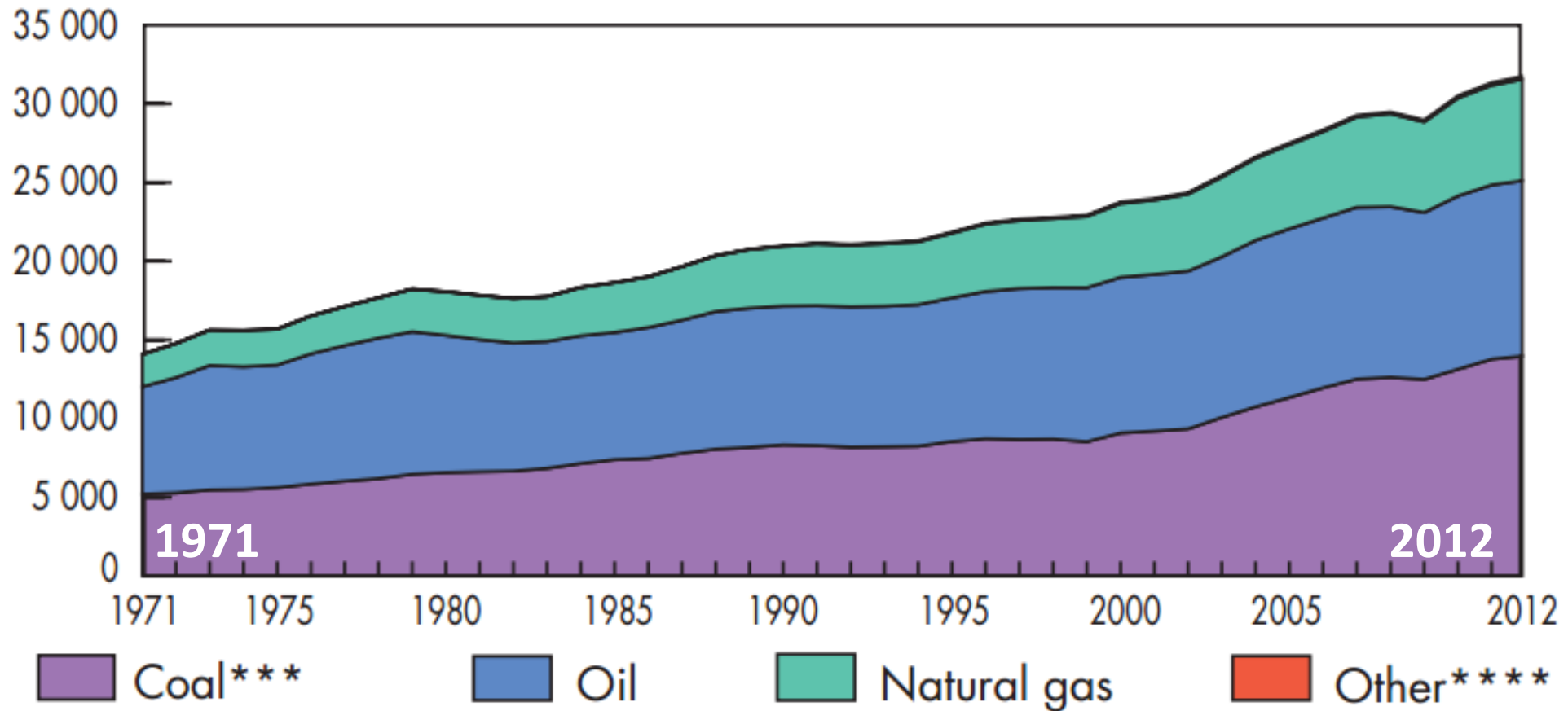
Natural gas

Other\*\*\*\*

\*\*\*\*Includes geothermal, solar, wind, heat, etc

# CO<sub>2</sub> Emissions by Fuel

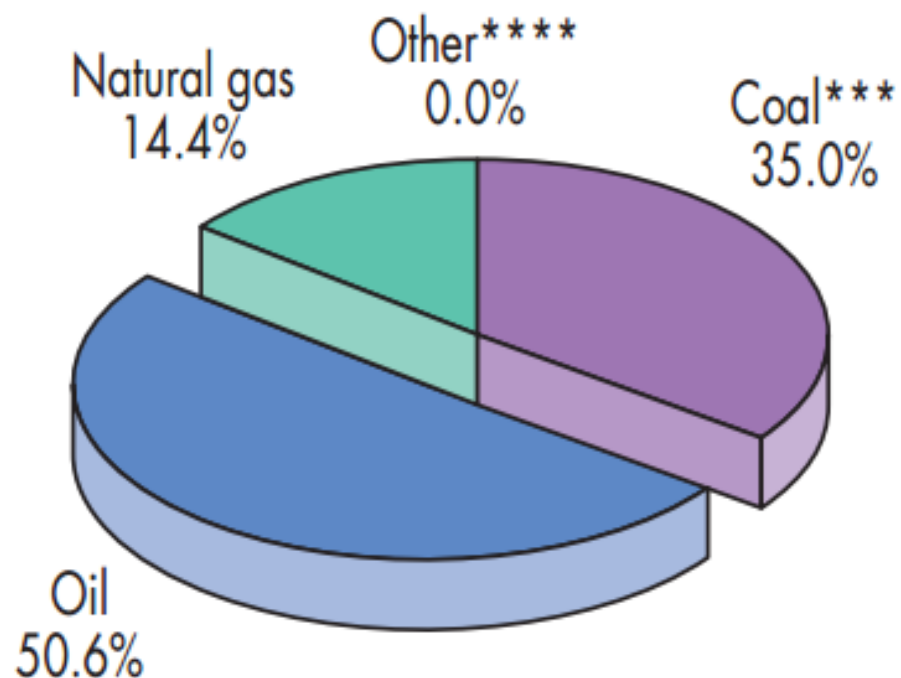
World\* CO<sub>2</sub> emissions\*\* from 1971 to 2012  
by fuel (Mt of CO<sub>2</sub>)



\*\*\*\*Includes geothermal, solar, wind, heat, etc

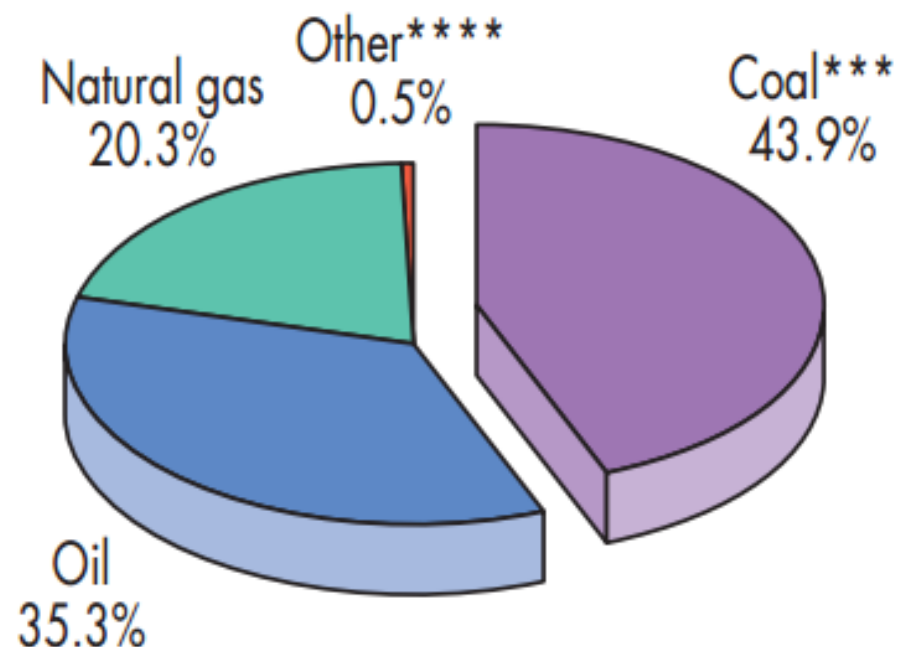
# 1973 and 2012 fuel shares of CO<sub>2</sub> emissions

1973



15 633 Mt of CO<sub>2</sub>

2012



31 734 Mt of CO<sub>2</sub>



# Headed for Hell Really



DANTE'S  
INFERNO