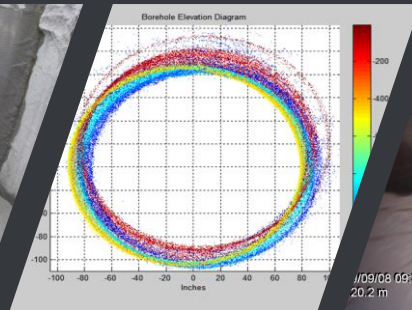




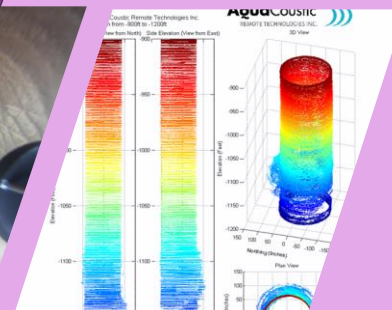
Survey Through
Drilling Mud



Sonar Profiles
Plan View



Drilled Water
Intake Shaft



Excavated Bridge Pile
Sonar Data

WE ARE AN INFRASTRUCTURE PRE-ENGINEERING FIRM
WE PROVIDE UNIQUE DATA & SURVEY SOLUTIONS



Sonar profiling system being lowered into an excavated shaft

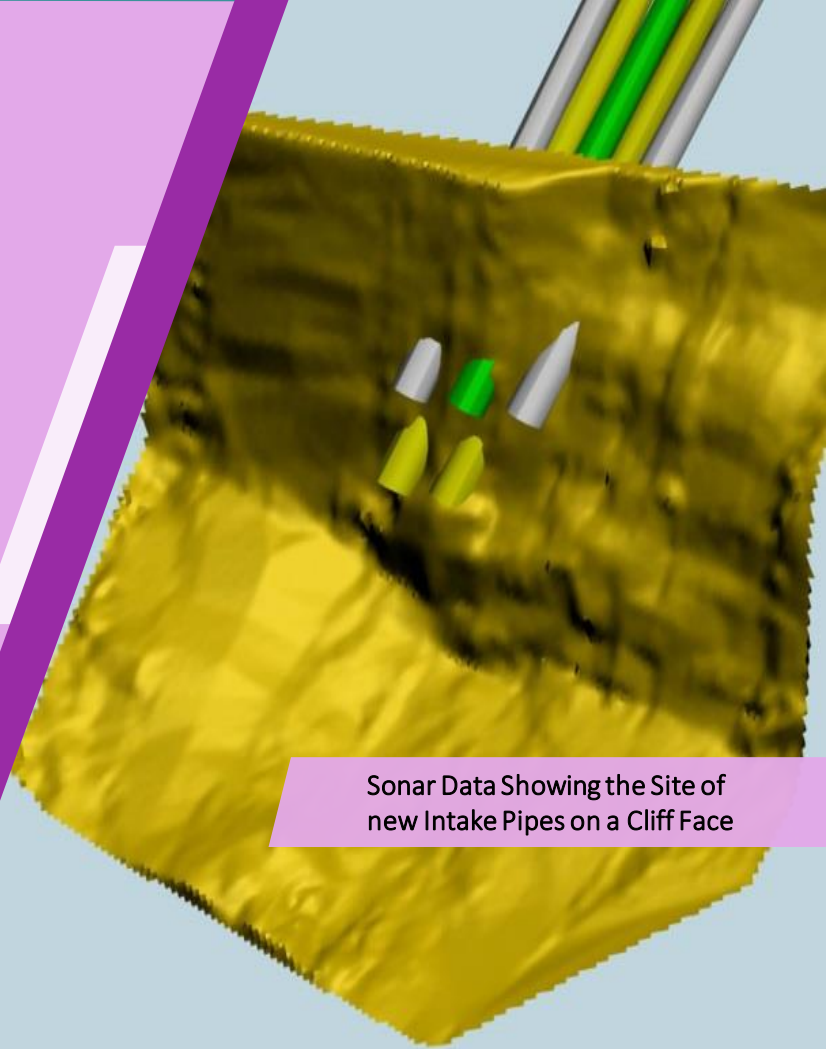
AquaCoustic
REMOTE TECHNOLOGIES INC.

- VERTICALITY
- VOLUMES
- SHAPE
- CROSS-SECTIONS
- DEPTHS OF 2,000' OR MORE
- MEASUREMENTS TO 1" ACCURACY
- XYZ DATA SUITABLE FOR CAD PROGRAMS
- VIDEO WHERE POSSIBLE

SINCE 1993 OUR GOAL HAS BEEN TO PROVIDE
EASILY UNDERSTOOD DIGITAL SURVEY REPORTS

WE DELIVER THE DATA YOU NEED

- Multi-sensor data collection technology provides you with new and unrivalled definition of fixed assets
- If you have a challenging inspection or survey problem; our design team can help.
- We have designed & built innovative robotic systems to position the sensors accurately
- AquaCoustic (AQC) uses in house designed and built innovative robotic systems
- We collect video & xyz point cloud data above and below water using Time of Flight (ToF) laser (LIDAR) , video cameras and SONAR
- Since 1993, civil engineers have used our data to prioritize remedial work for their fixed assets.



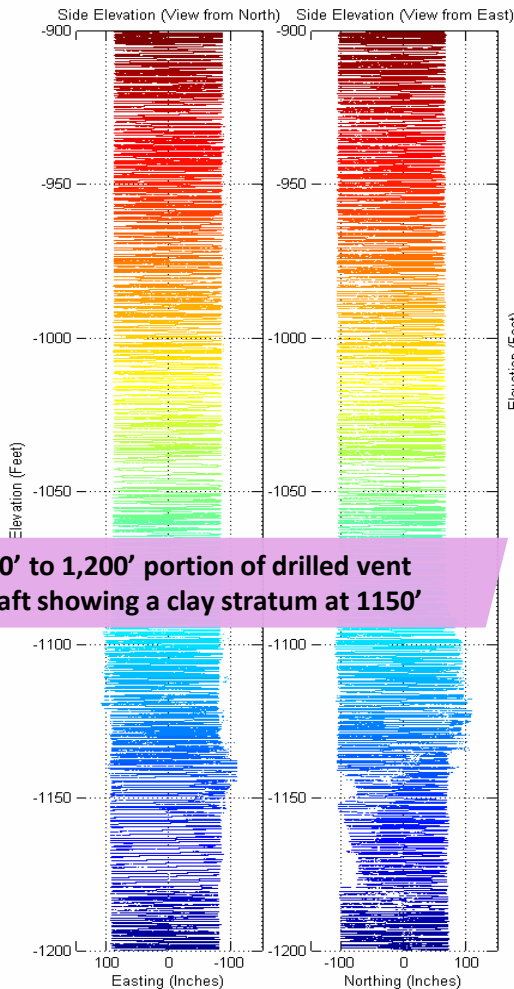
Sonar Data Showing the Site of
new Intake Pipes on a Cliff Face



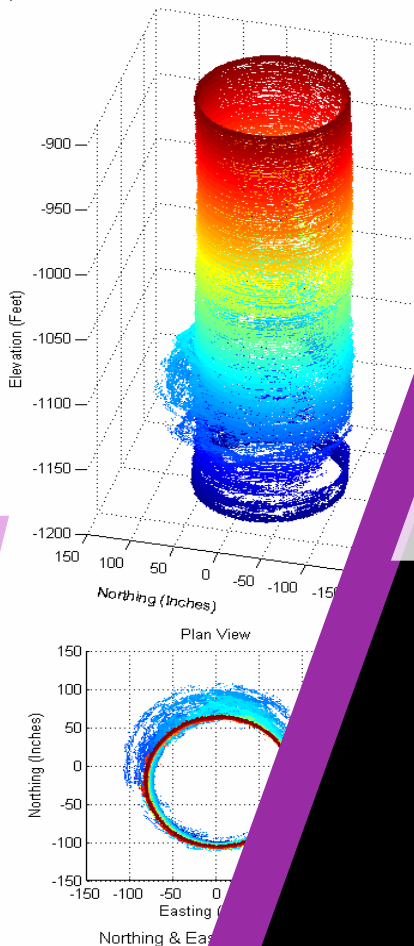
Preparing to lower Video and Sonar Sensors for a Survey of 400' Drilled Intake Shaft.

INSPECTION SENSORS TO FIT YOUR NEEDS

- Digital video cameras captures shoreline conditions
- Time of Flight profiling lasers used to create above water AutoCAD drawings
- Digital profiling SONARS create CAD ready data below water
- Our 3D SONAR system provides a dense point cloud around a fixed point
- Digital scanning & side-scan sonars are used to image underwater trends
- RTK GPS for survey positioning within 2 cm – 3/4" accuracy
- Additional sensors are easily incorporated onto our system



900' to 1,200' portion of drilled vent shaft showing a clay stratum at 1150'



AVAILABLE WORK PLATFORMS

- Profiling sonar optimized for drilling mud
- 3D Sonar system
- Profiling laser 25 m range, 10 mm accuracy
- Panoramic HD video cameras
- 5,400' of armored electro fiber cable
- Propane Powered Six Wheel Drive Amphibious Vehicle
- Our deliverables are designed to make your life easier



AQC KEY POINTS

- We are an infrastructure pre-engineering firm that develops unique data gathering solutions
- Our data helps you prioritize areas of concern and can be instrumental in reducing costs of repairs
- We design and build robotic systems capable of meeting any challenge and develop software that transforms data into useful information
- We control the data from collection to deliverables without outsourcing; therefore, we respond to client input directly and completely
- Our technological solutions generate actionable information that reduces costs
- We personally pick up the phone & answer your technical questions

Profiling sonar set up
for a deep shaft

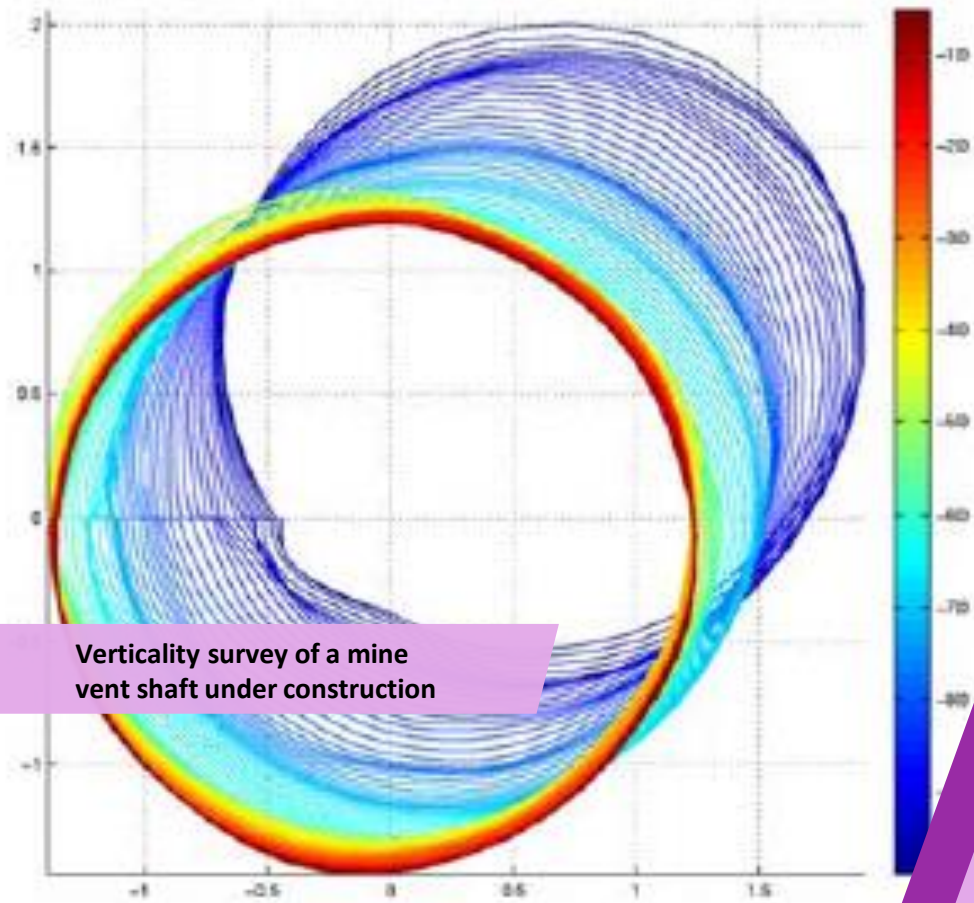
AREAS OF INFRASTRUCTURE INSPECTIONS

IF YOU HAVE A PARTICULAR INTEREST OR CHALLENGE, WE CAN DISCUSS SOLUTIONS ON THE PHONE OR WE CAN SEND ADDITIONAL INFORMATION ON THE FOLLOWING:

- ✓ Dams
- ✓ Bridges
- ✓ Tunnels
- ✓ Culverts
- ✓ Manholes
- ✓ Mine Stopes
- ✓ Ports & Marinas
- ✓ Large Diameter Pipes
- ✓ Traffic Control Plans
- ✓ Mine Tailing Ponds
- ✓ Shafts and Boreholes
- ✓ Specialty Sonar/Laser Surveys
- ✓ Pipe and Cable River Crossing Surveys
- ✓ Internal ROV outfall surveys, minimum diameter 450mm (18")
- ✓ Historical Video Re-coding to New Standards or AI Quality Control
- ✓ Processing Client Collected Sonar & Laser Data
- ✓ Underwater Search and Surveys

AQUACOUSTIC CAN PLAY A SIGNIFICANT ROLE IN YOUR RISK MANAGEMENT STRATEGY

Top View:



Verticality survey of a mine vent shaft under construction

WHAT CAN WE DO FOR YOU



info@Aquacoustic.com
www.aquacoustic.com
188 West 6th Avenue
Vancouver, BC V5Y 1K6

Phone: +1.604.730.8117
Fax: +1.604.730.8817

Toll free in North America: +1.888.379.7601