

A



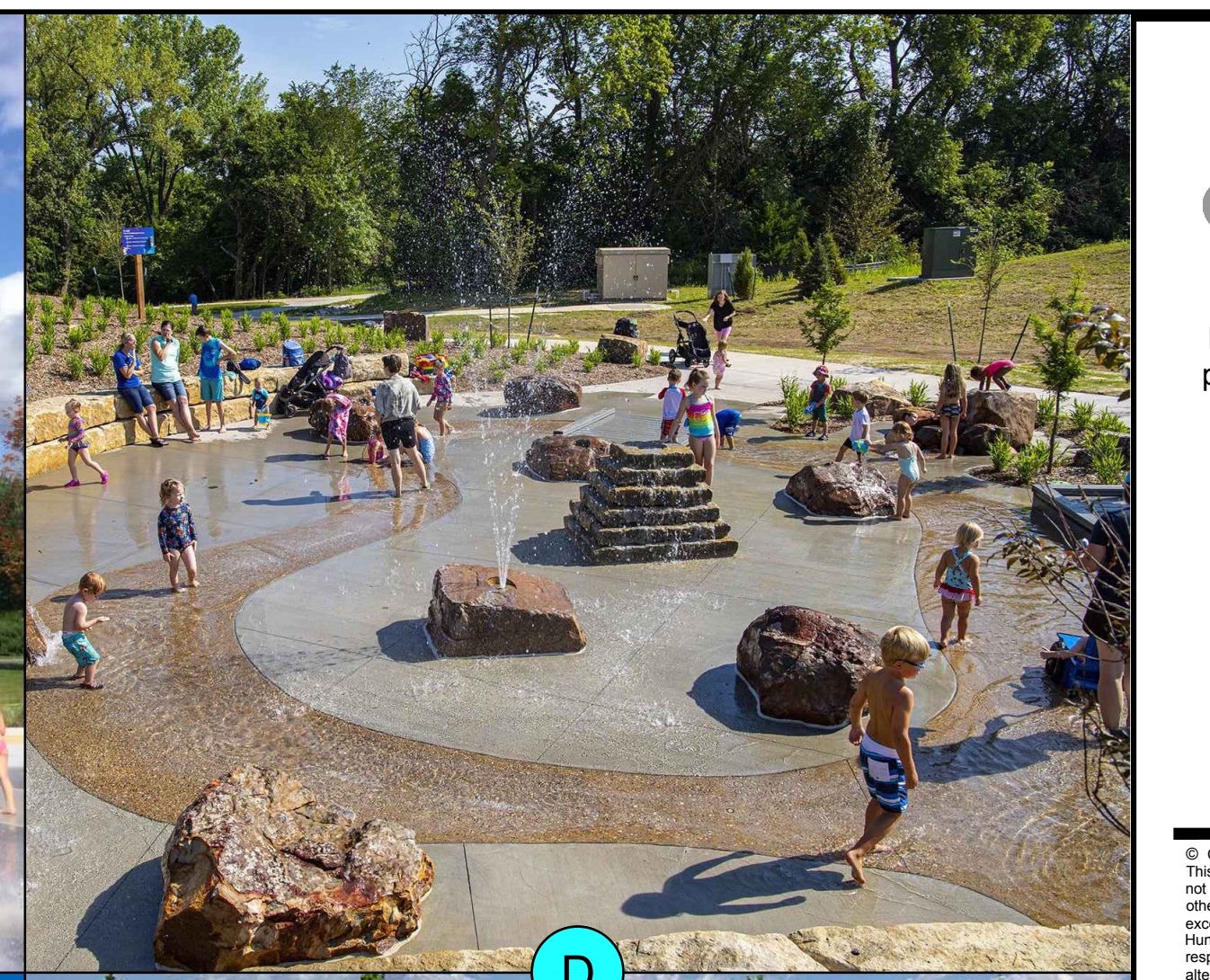
B



C



D



E



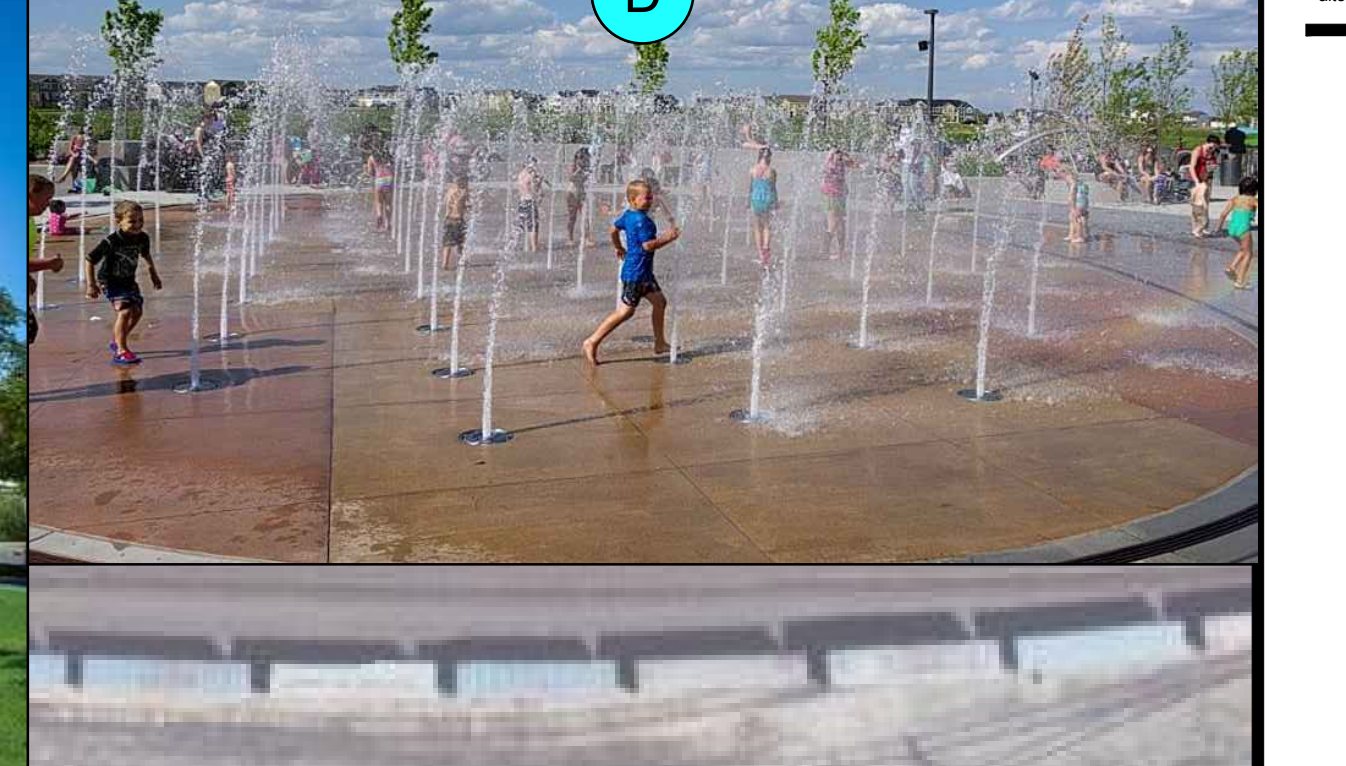
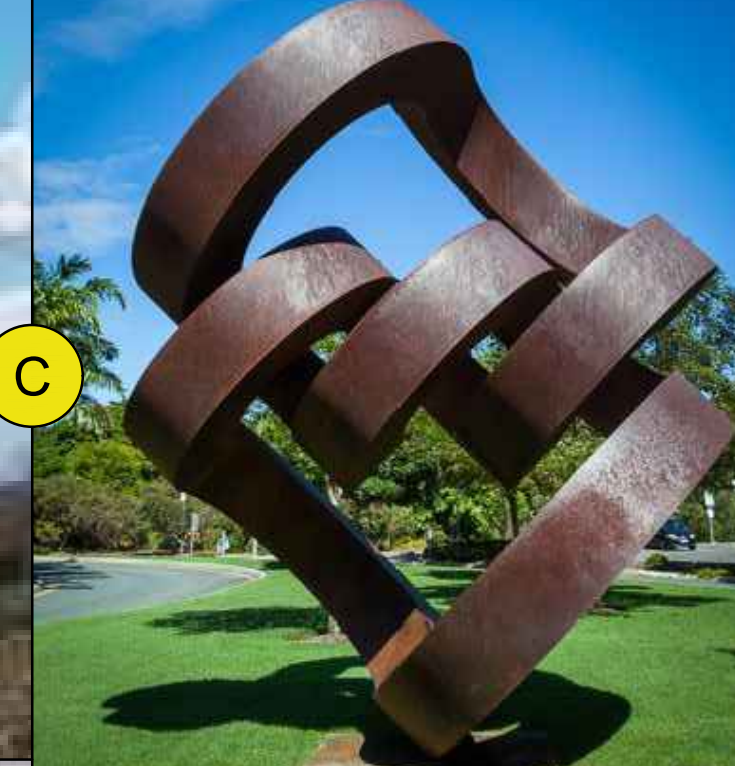
S



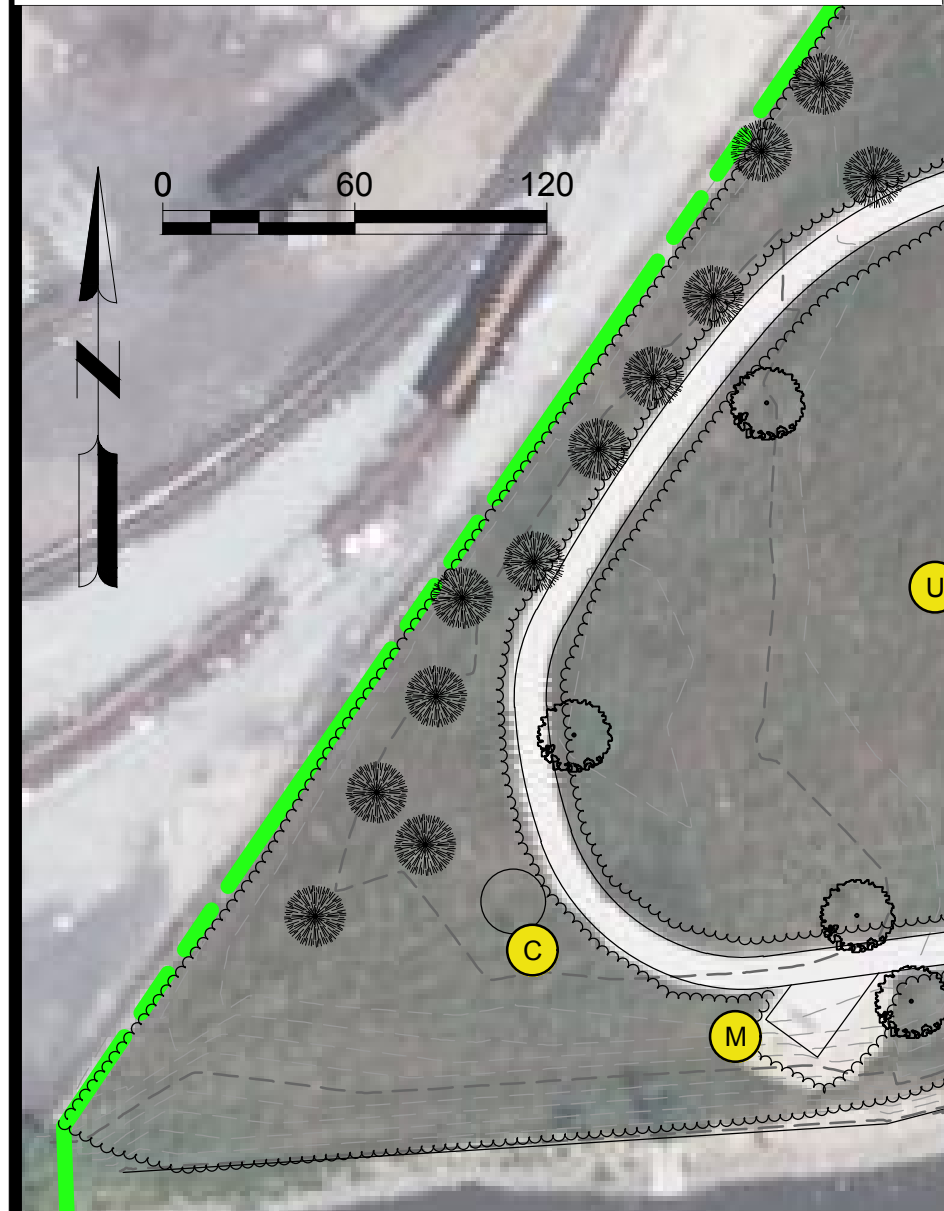
I



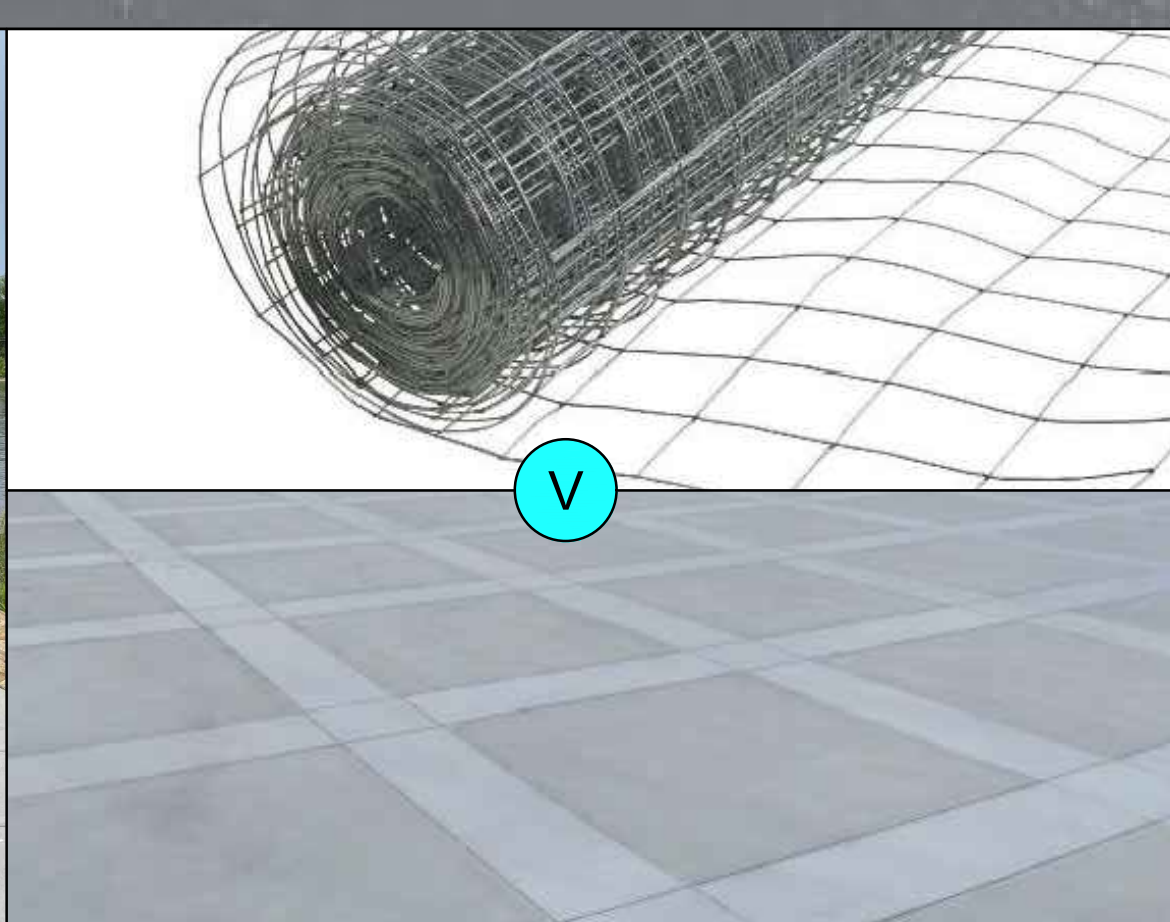
C



- A** ICE SKATING RIBBON
- B** FIRE PIT
- C** SCULPTURE LOCATION
- D** NWSW LADLE INSPIRED SPLASH PAD
- E** 5-12+ PLAYGROUND (NATURE THEME)
- F** 2-5 PLAYGROUND
- G** PARK SHELTER WITH RESTROOMS
- H** SHELTER ACCESS / STAGING / LOADING
- I** VETERANS MEMORIAL
- J** TURF GRASS AMPHITHEATER VIEWING
- K** NWSW WIRE ROD INSPIRED SEATING/WALKING
- L** CANOE / KAYAK LAUNCH/TAKEOUT
- M** EXISTING SWING BENCH
- N** STORMWATER FACILITY
- O** PARKING LOT
- P** OPEN AIR SHELTER
- Q** EXISTING TREE TO REMAIN
- R** PROPOSED TREE
- S** AT GRADE "WOODED" PLAZA
- T** STERLING COBBLE PLAZA / WALK
- U** EXISTING VEGETATION TO REMAIN
- V** NWSW WIRE MESH INSPIRED PAVED PLAZA
- W** PLAZA PICNIC / PLAY / VIEWING MOUND
- X** PLAZA PICNIC LAWN
- Y** PLAZA TREE WITH GRATE
- Z** COMMONWEALTH EDISON



M



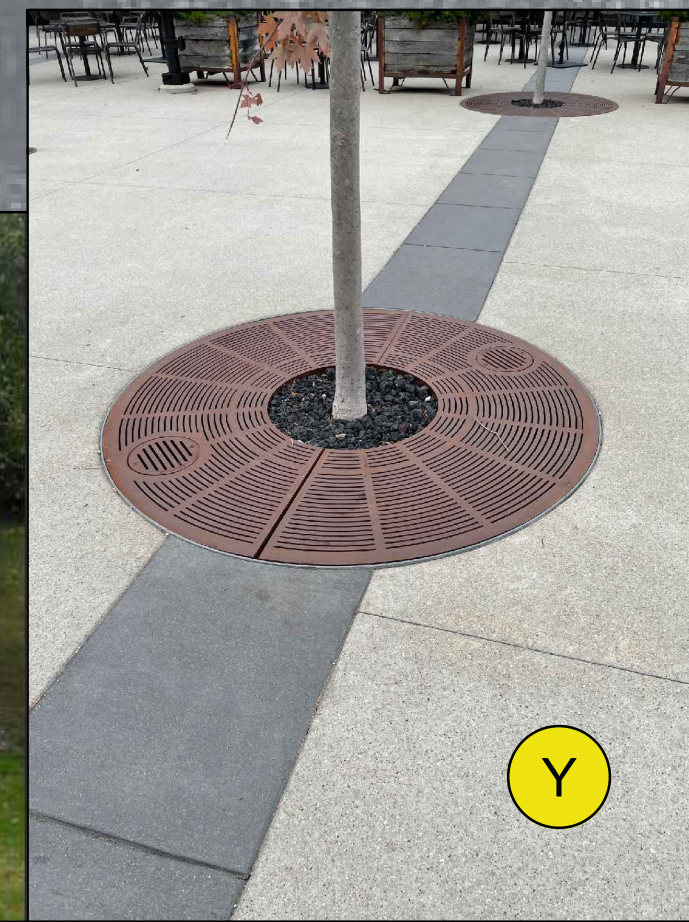
V



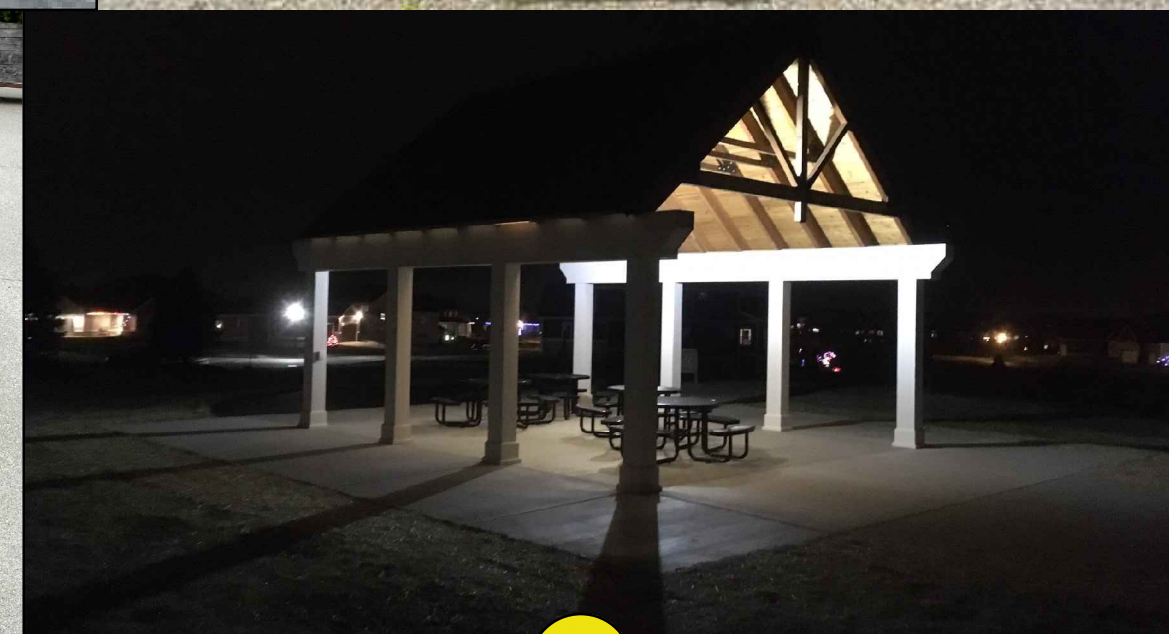
K



L



Y



P



C



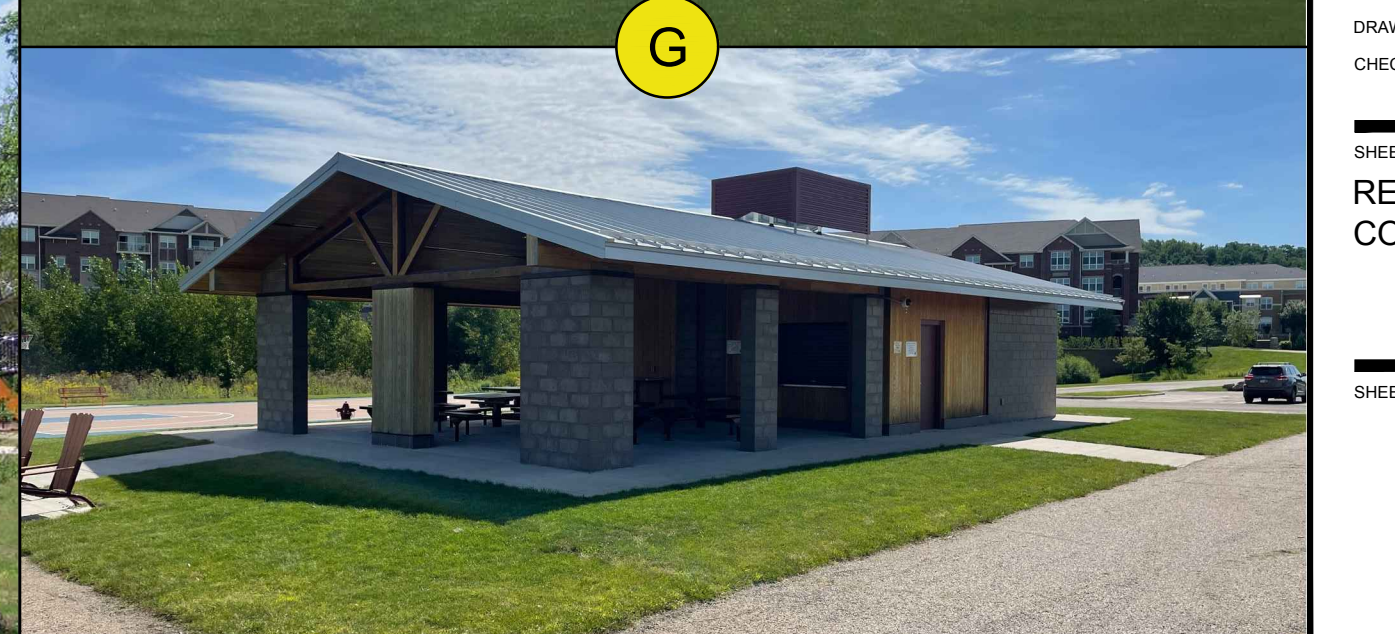
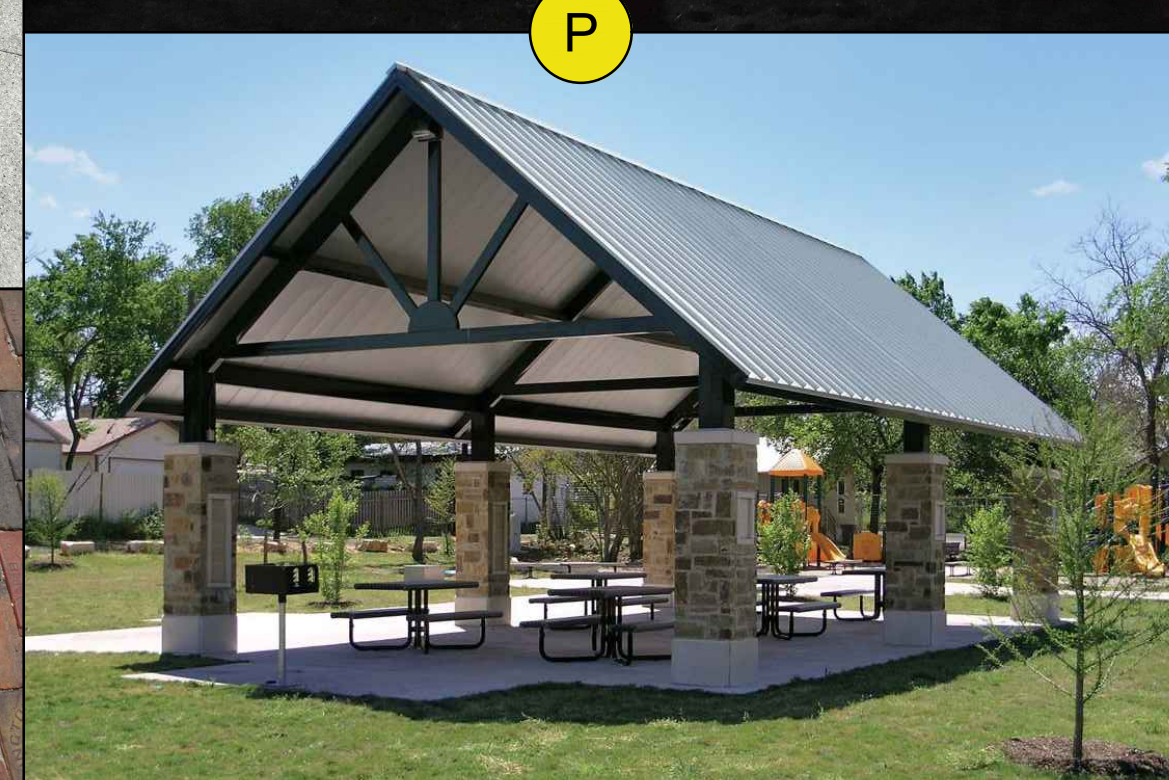
G



W



T



K:\1953300\113830\113830-01\PROJECT\REDEVELOPMENT\REIMAGINED\CONCEPTS\STERLING_RIVERFRONT_CARTOONING.rvt 11/14/22 11:45 AM