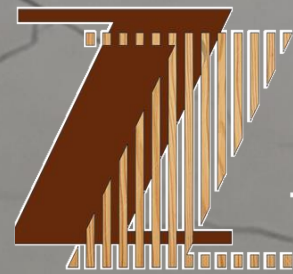


# SINGLE FAMILY HOUSE PROJEC

ZZ MILLWORK LTD



Nov 2024



**VERY  
KNOWLEDGEABLE IN  
INTERNATIONAL MATERIALS  
WITH  
INTERNAL  
PROCUREMENT TEAM  
TO HELP  
SAVE COSTS**

SMALL  
MEDIUM  
LARGE 3000+

COMPLETED **3000+** LOCAL/OVERSEA PROJECTS  
OVER THE PAST 30 YEARS





CAPITOL HILL \\ BURNABY, BC \\ 4,800sqft



CAPITOL HILL \ \ BURNABY, BC \ \ 4,800sqft



CALIFORNIA HOME \ \ VICTORIA, BC \ \ 2,800sqft



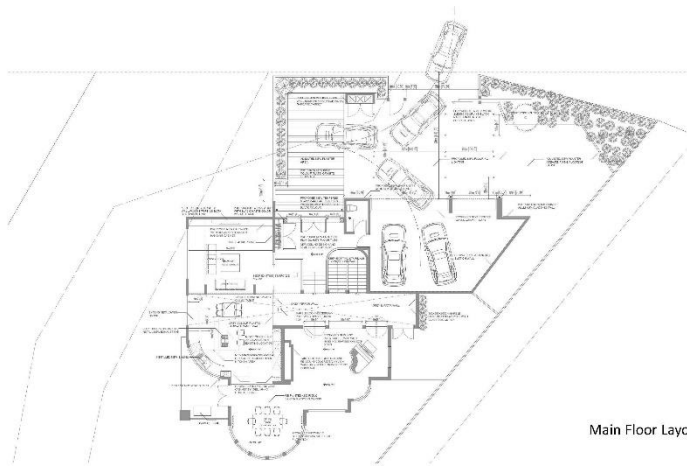
CALIFORNIA HOME \ VICTORIA, BC \ 2,800sqft



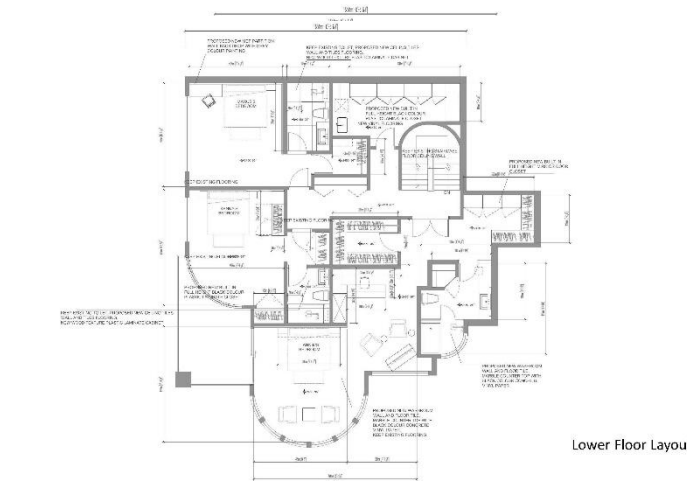




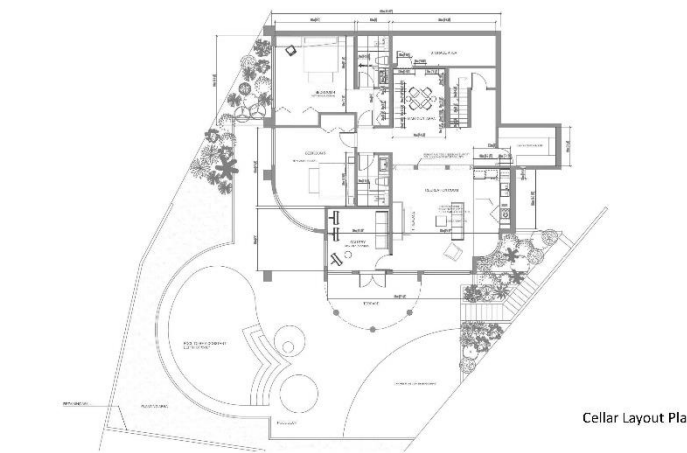
CALIFORNIA HOME \ VICTORIA, BC \ 2,800sqft



Main Floor Layout Plan



Lower Floor Layout Plan

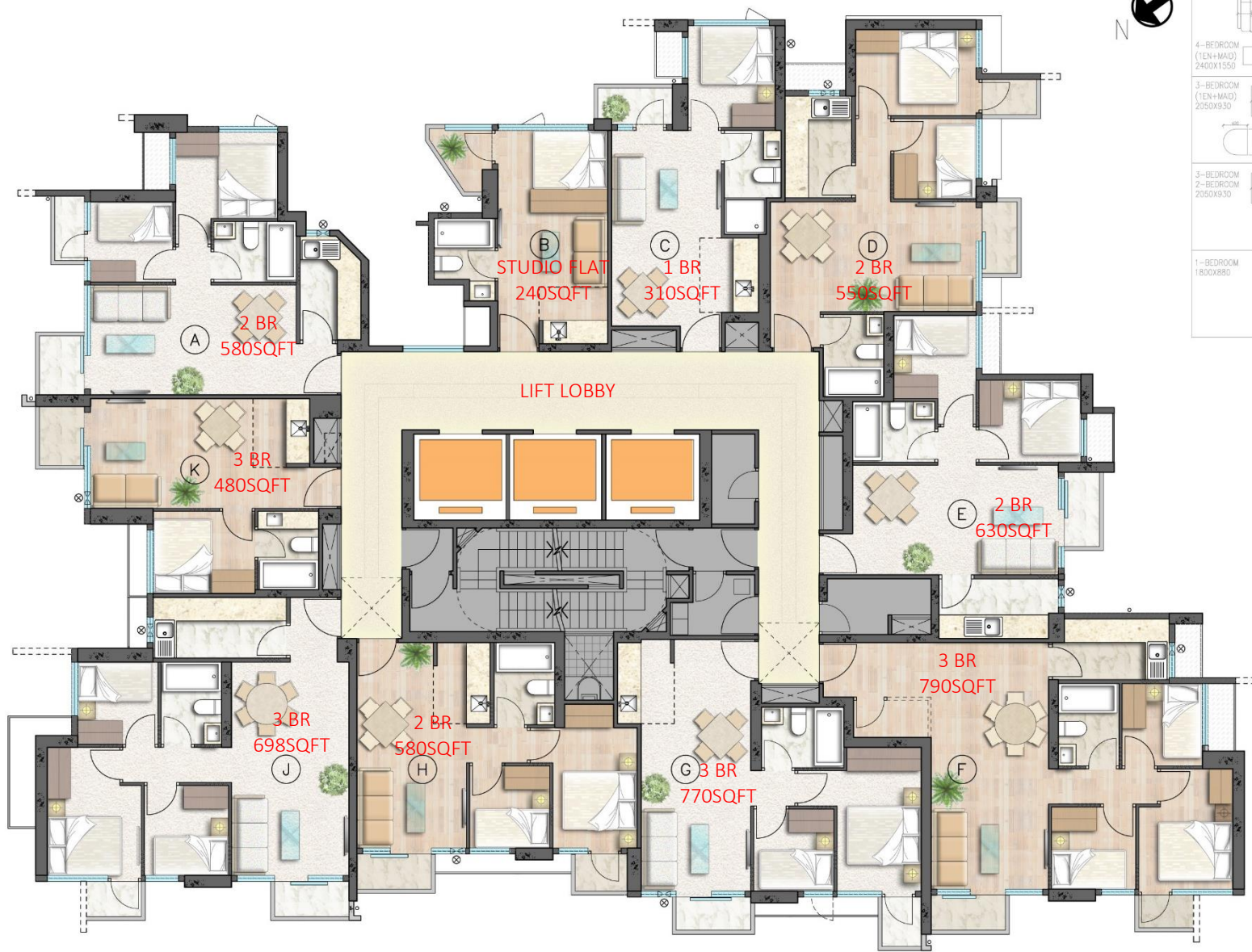


Cellar Layout Plan

PINECREST DR \\ WEST VANCOUVER \\ 6,800sqft



WOODGLEN THE ART OF SIMPLICITY \ \ LOS ANGELES, USA \ \ 4,500sqft



FURNITURE LEGEND

4-BEDROOM (1EN+MAD) 2400X1550	4-BEDROOM 3-BEDROOM D=1050	
3-BEDROOM (1EN+MAD) 2050X930	2-BEDROOM 850X850	
3-BEDROOM 2-BEDROOM 2050X930	1-BEDROOM 750X750	
1-BEDROOM 1800X880	SECONDARY BEDROOM 1900X1000	
	MASTER BEDROOM 1900X1500	



SITE PLAN

LONG PING APARTMENT TYPICAL UNIT \ HONG KONG



FAÇADE  
CONCEPT  
DRAWING

LONG PING APARTMENT TYPICAL UNIT \ HONG KONG




SMALL SPACES MULTIFUNCTION INTERIOR FEATURE \\ HK



HERO  
DESIGN

TOWER 1 TYPICAL / PREMIUM WASHROOM AND KITCHEN \ \ TKO HK



# SMALL HOUSE THEME & PROCESS

Sophisticated

Natural

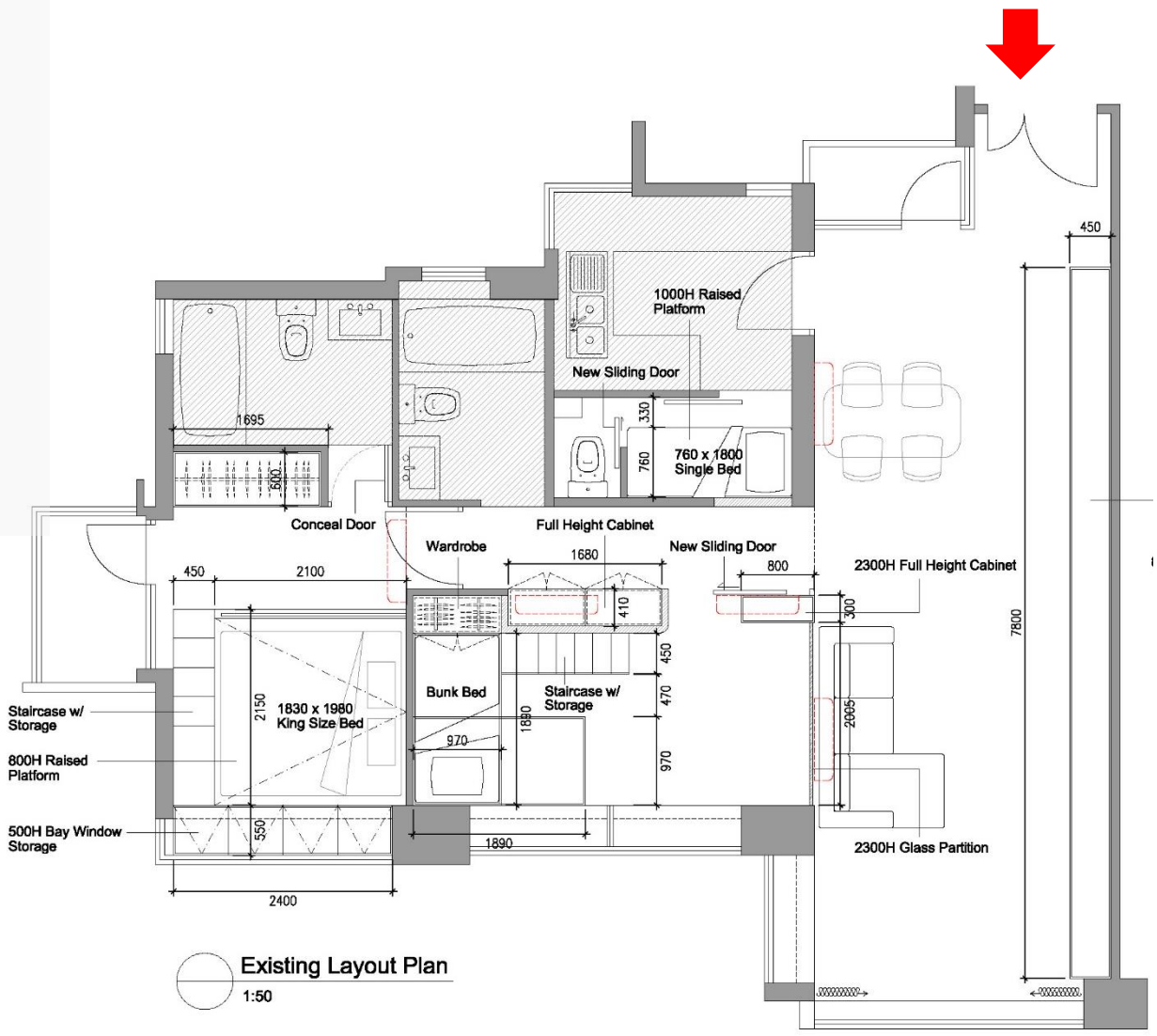
Simplify

Unique



# Mayfair By The Sea 1

887 SQFT  
MASTER BD  
ENSUITE  
BEDROOM  
1 WASHROOM  
1 KITCHEN  
MAID ROOM



# Mayfair By The Sea 1

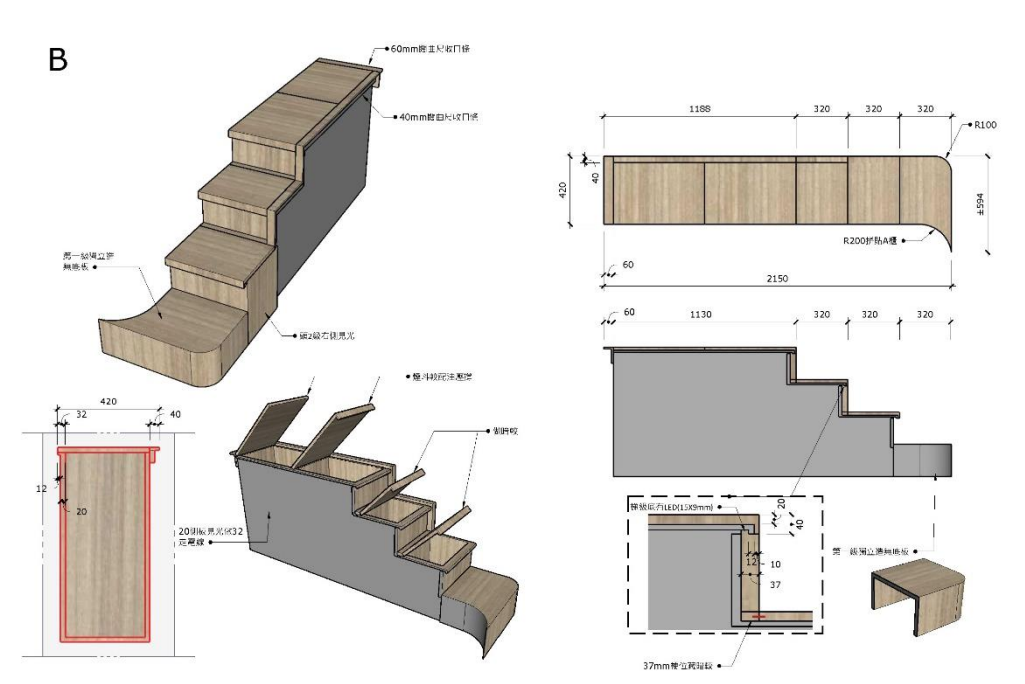
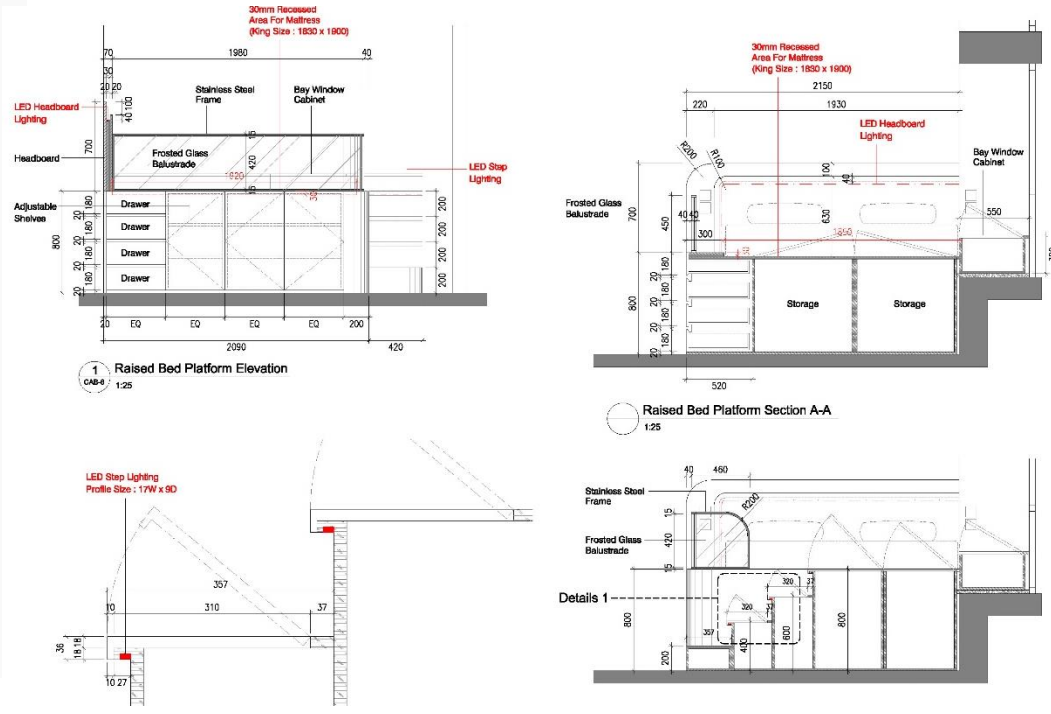




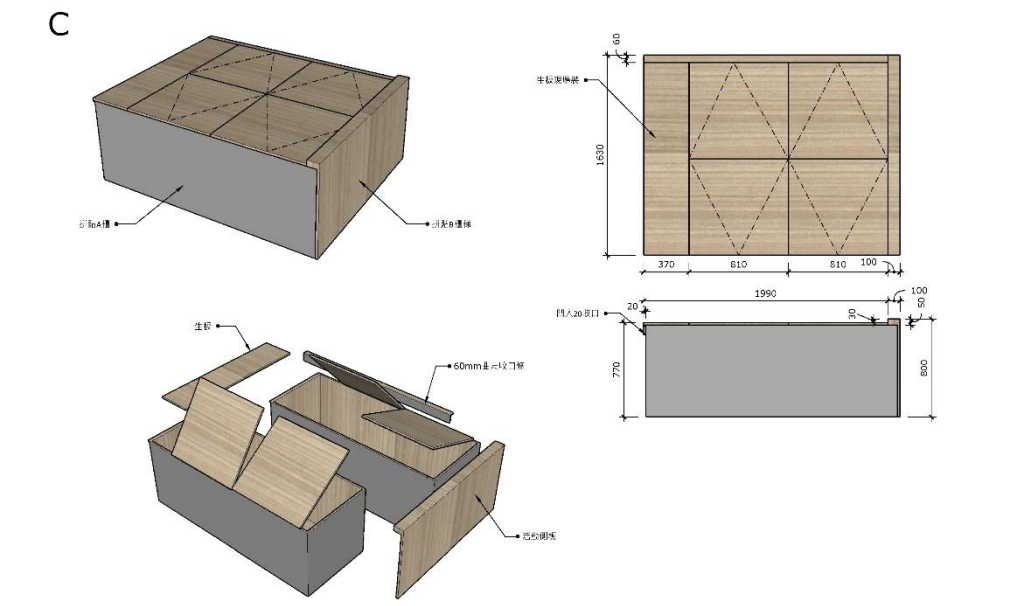
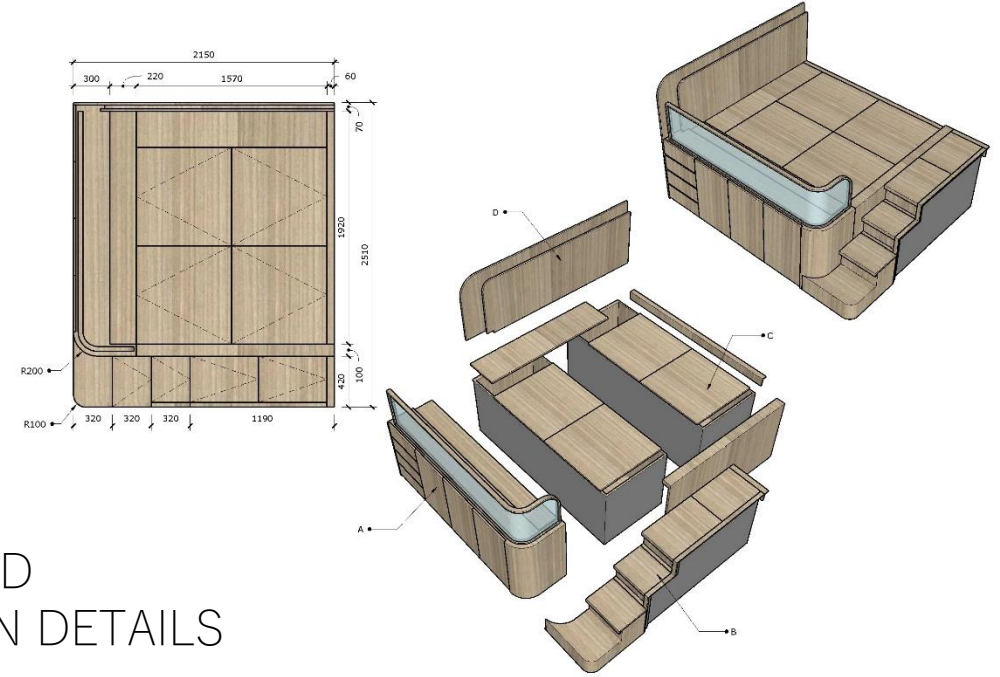
# Mayfair By The Sea 1



# Mayfair By The Sea 1

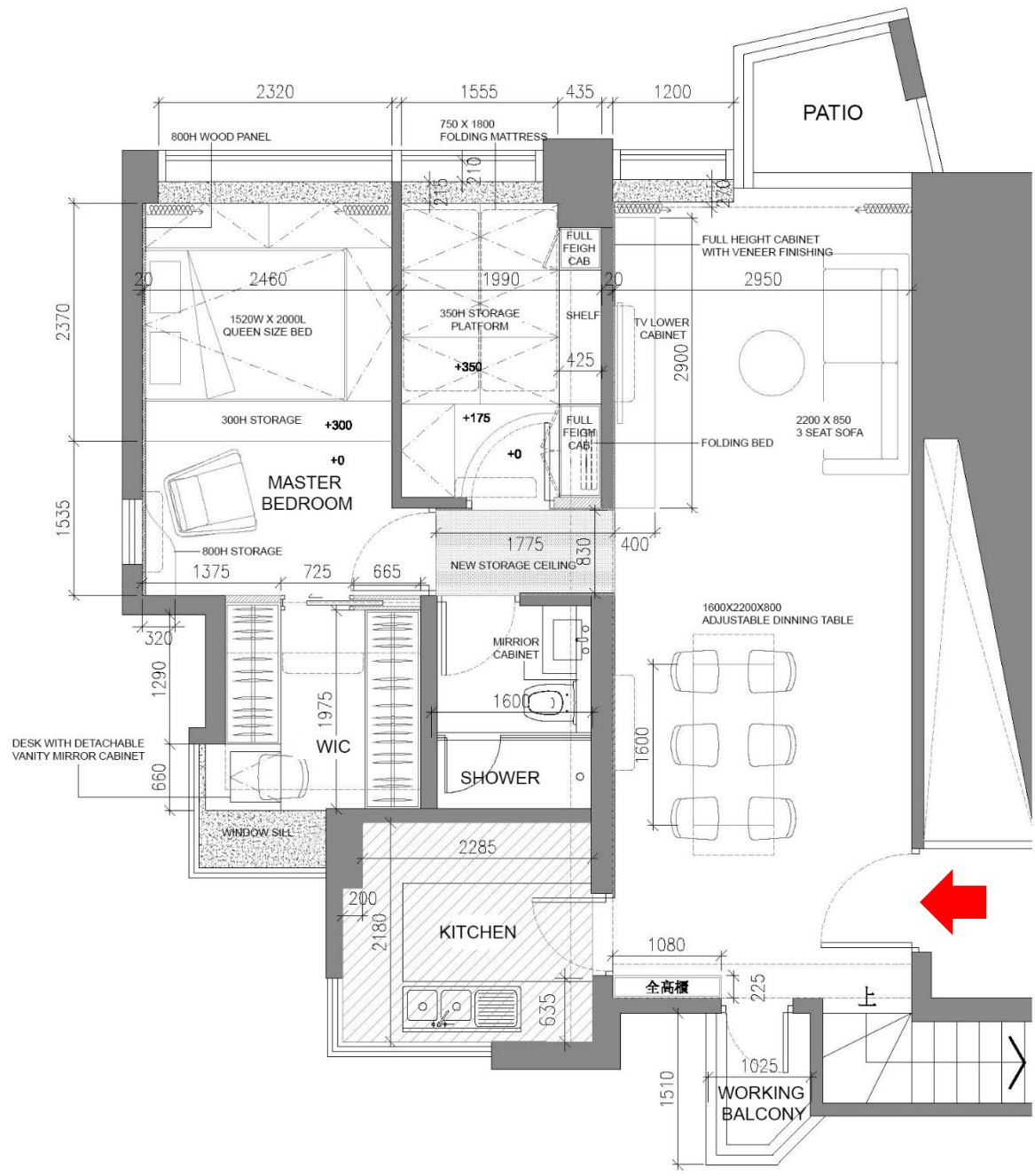


887 SQFT  
MASTER BD  
ENSUITE  
BEDROOM  
1 WASHROOM  
1 KITCHEN  
MAID ROOM



FURNITURE AND  
CONSTRUCTION DETAILS

# Mayfair By The Sea 2



770 SQFT  
 2 BD  
 WIC  
 1 WASHROOM  
 1 KITCHEN



# Mayfair By The Sea 2



LIVING AREA &  
DINING AREA

# Mayfair By The Sea 2

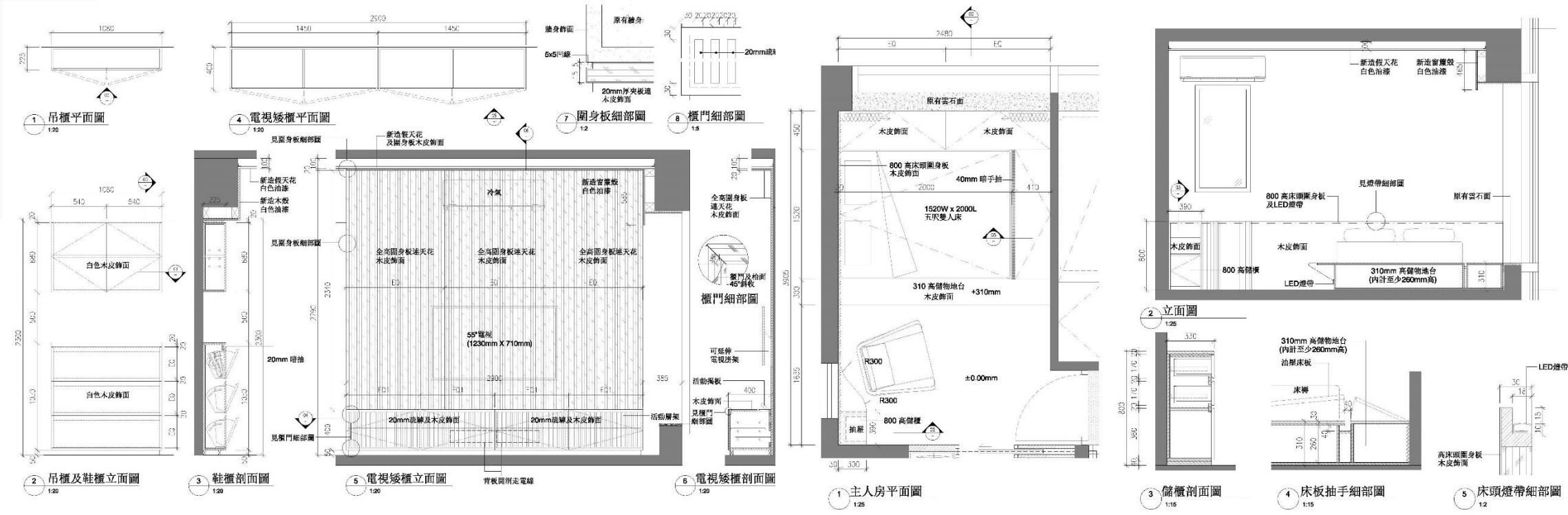




# Mayfair By The Sea 2

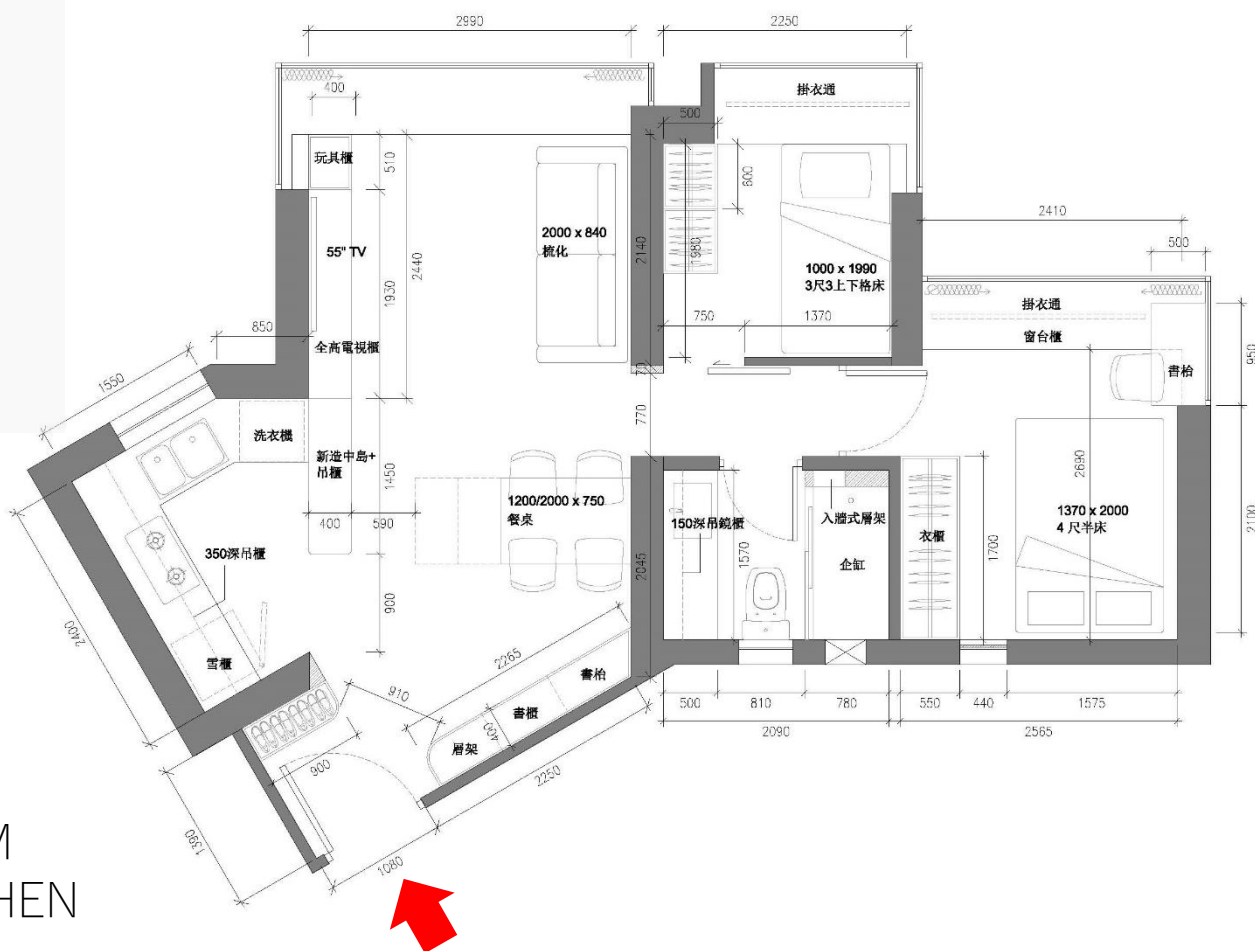


# Mayfair By The Sea 2



FURNITURE AND  
CONSTRUCTION DETAILS

# ISLAND HARBOUR VIEW



480 SQFT  
2 BD  
1 WASHROOM  
1 OPEN KITCHEN



# ISLAND HARBOUR VIEW



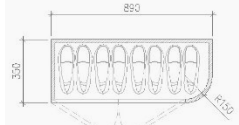
# ISLAND HARBOUR VIEW



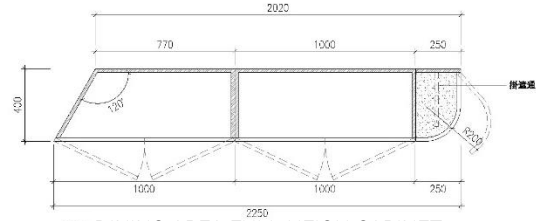
# ISLAND HARBOUR VIEW



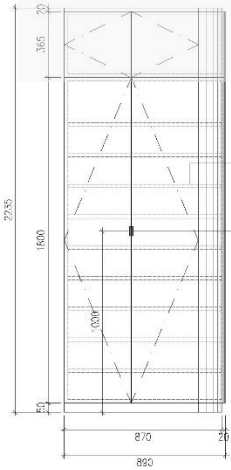
# ISLAND HARBOUR VIEW



MAIN ENTRANCE SHOE CABINET  
1:20

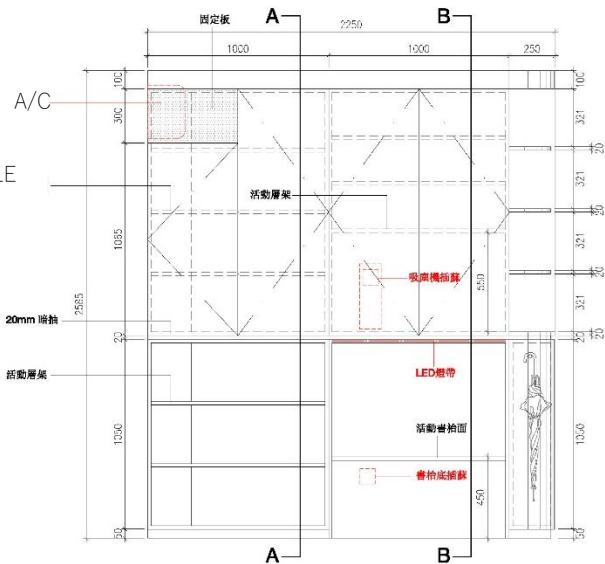


DINING AREA FULL HEIGHT CABINET  
1:20

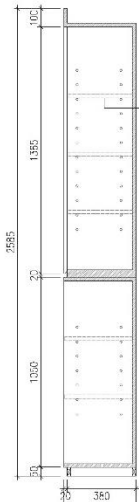


入口鞋櫃立面圖  
1:20

ADJUSTABLE SHELF  
HANDLE



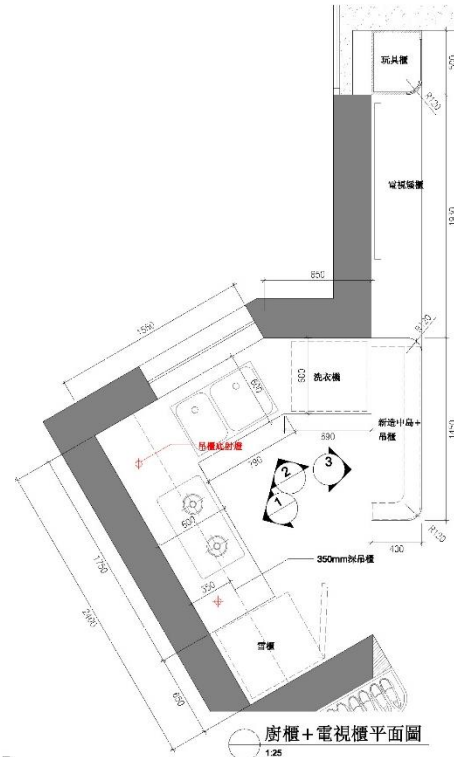
飯廳高櫃立面圖  
1:20



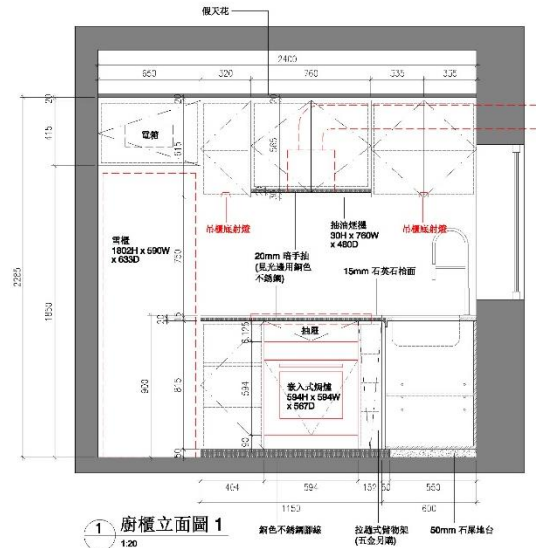
切面圖A-A  
1:20



切面圖B-B  
1:20



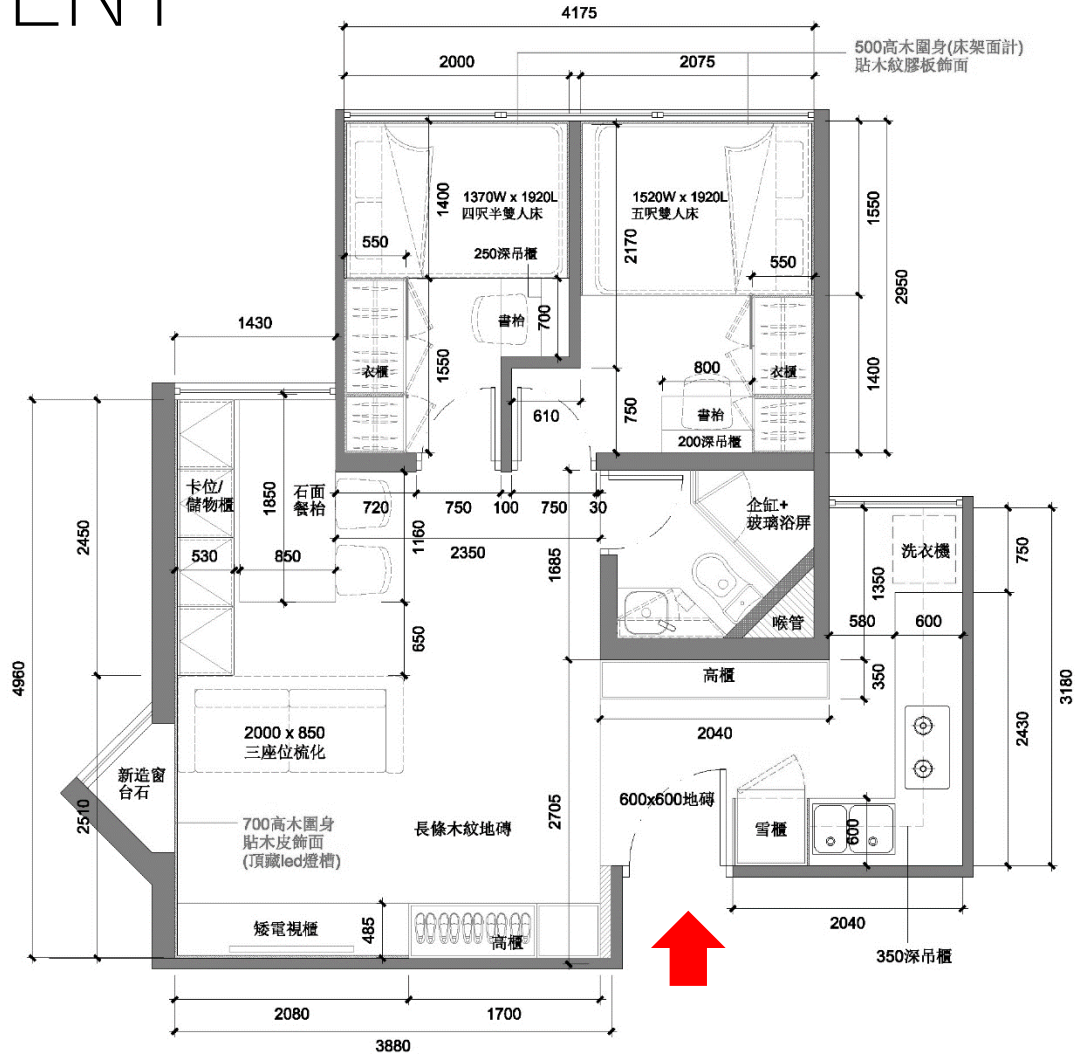
廚櫃+電視櫃平面圖  
1:25



1 廚櫃立面圖 1  
1:20  
射色不銹鋼飾線  
拉蓋式掛物架 (五金另購)  
60mm 石英地台

# TMH APARTMENT

450 SQFT  
 2 BD  
 WIC  
 1 WASHROOM  
 1 OPEN KITCHEN





# TMH APARTMENT



450SQFT  
MASTER BD  
ENSUITE  
BEDROOM  
1 WASHROOM  
1 KITCHEN  
MAID ROOM

ALL  
CONSTRUCTION  
COST – CAD

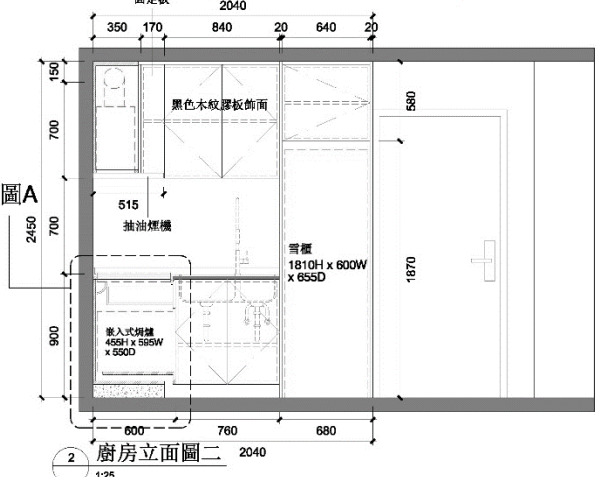
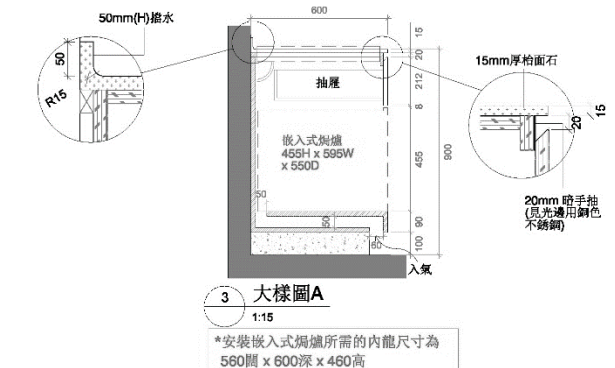
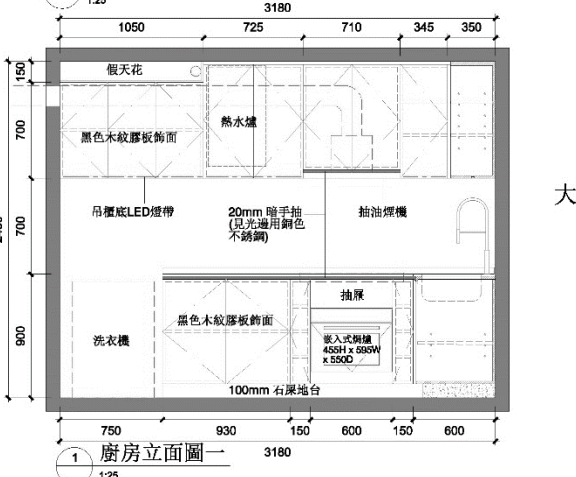
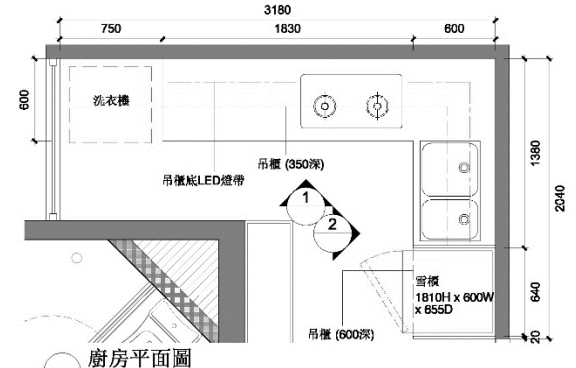
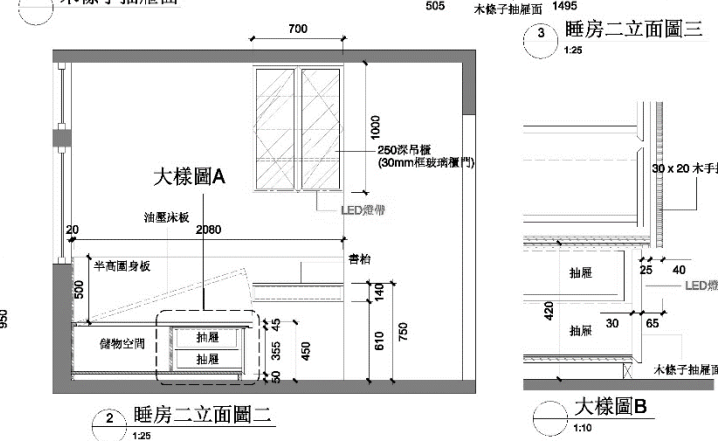
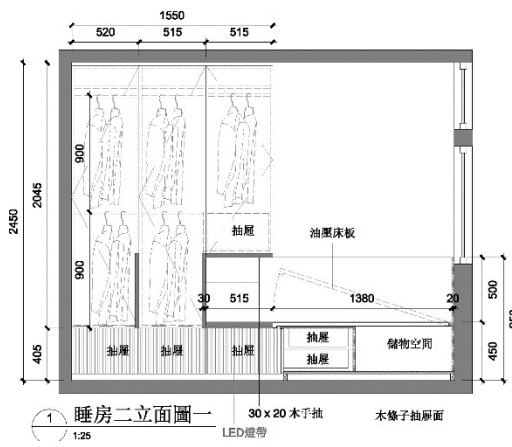
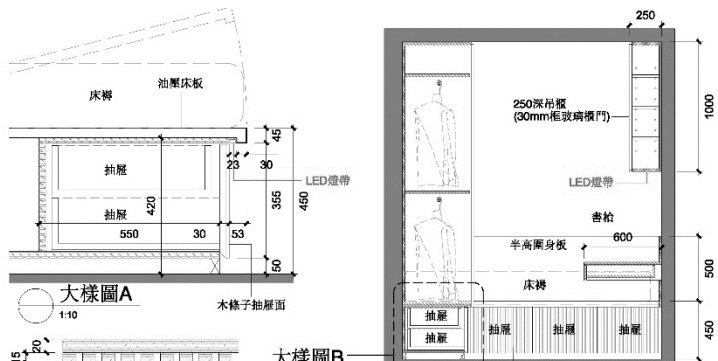
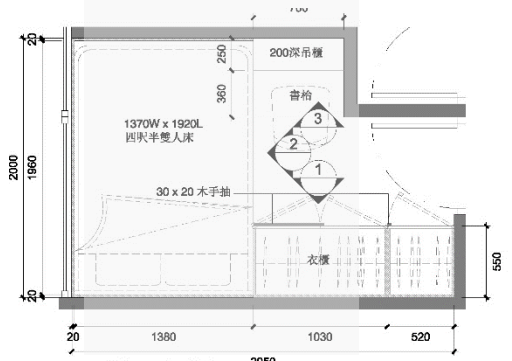
# TMH APARTMENT



# TMH APARTMENT



# TMH APARTMENT



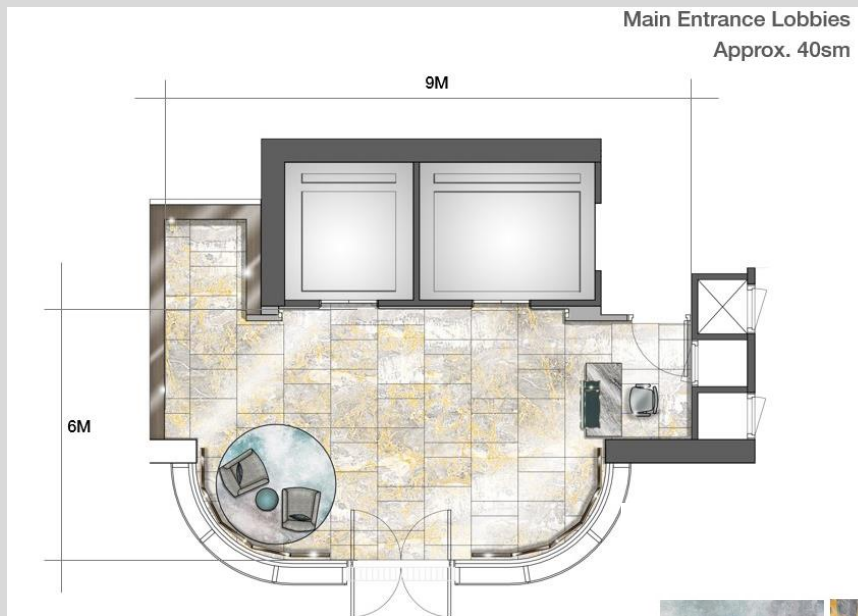
\*安裝嵌入式焗爐所需的內龍尺寸為 560闊 x 600深 x 460高



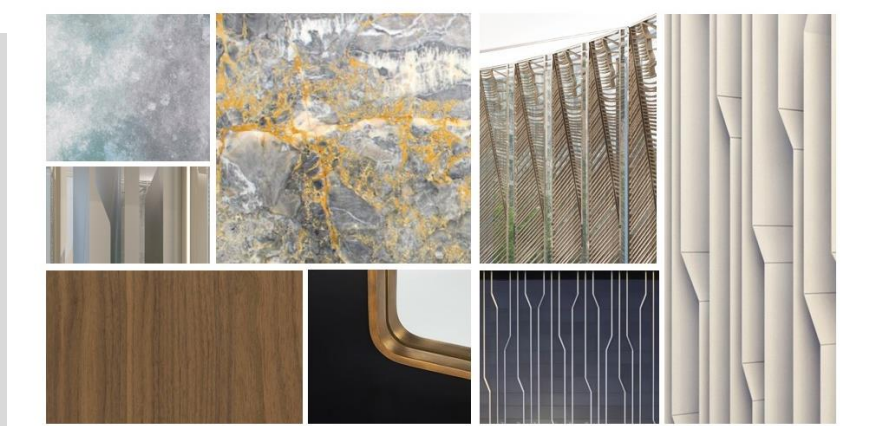
TAIHE LONGTING  
PHASE 1 & 2 TYPICAL LIFT LOBBY  
\\ SHENYANG CHINA

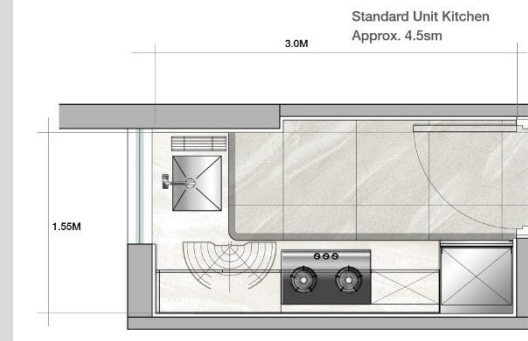
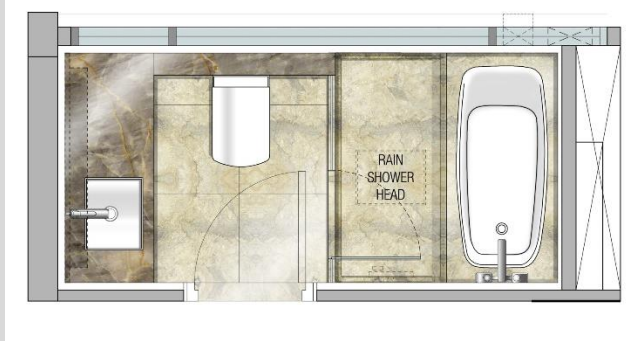
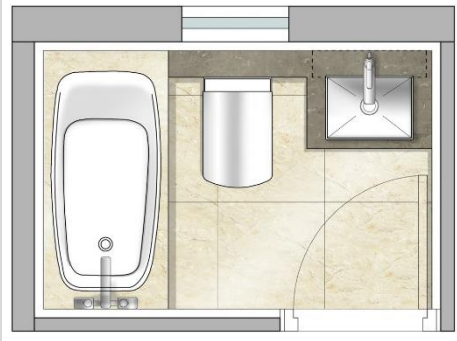


TAIHE LONGTING  
 PHASE 1 & 2 TYPICAL LIFT LOBBY  
 \ SHENYANG CHINA



Main Entrance Lobbies  
Mood Board





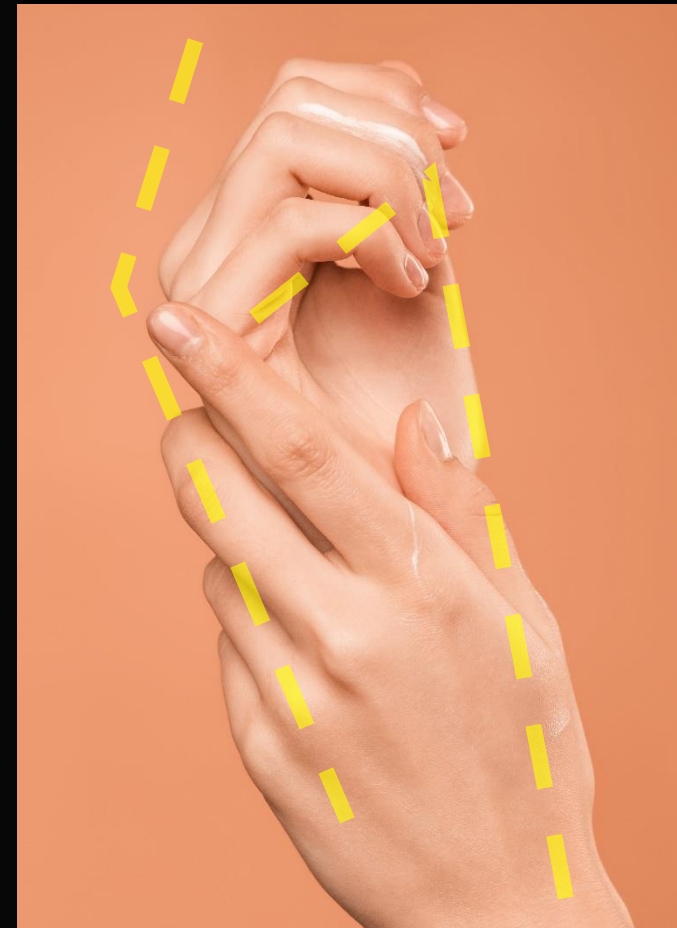
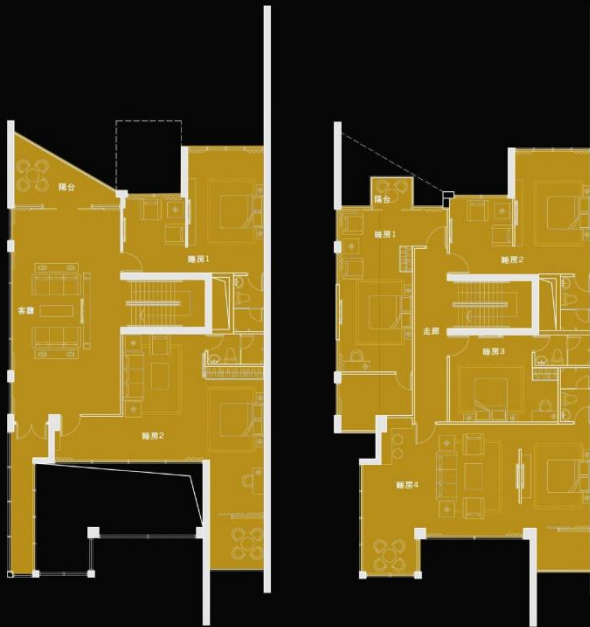
TYPICAL WASHROOM

PREMIUM WASHROOM

TYPICAL KITCHEN

PREMIUM KITCHEN





BUTTERFLY DREAM



**For the next 3 Projects we are supplying a Comprehensive Interior System at the request of the Developer: Completion 2025 / 2026**

**Doors:**

- 45-minute fire-rated doors
- Interior doors
- Pocket doors
- Closet Doors

**Cabinetry:**

- Kitchen cabinets
- Vanity systems (with LED Mirrors and Frame)
- Closet shelving systems

**Countertops:**

- Quartz countertops

**Additional Fixtures:**

- LED lighting
- Baseboards
- Plumbing fixtures
- Flooring



These doors come with an easy fit frame, significantly reducing install expenses. These doors all match. Viewing is possible at our warehouse.

# 3 Buildings 197 units with 2288 Cabinets

We can offer more than just Cabinets!  
Visit our local 16000 SQ Millwork Shop and Office.



## OSPIKA BLVD, Prince George

Watch the YouTube Video: <https://youtu.be/aBzrHicSiuQ>





**BLDG 2: PATRICIA BLVD, Prince George**





**BLDG 3: PATRICIA BLVD, Prince George**

The image shows a close-up of a wall with vertical wood paneling. A modern, glowing vertical light fixture is mounted on the wall, casting a warm, yellow light. The fixture consists of a dark, rectangular base with a long, thin, glowing tube extending vertically. The background is slightly blurred, showing another similar light fixture on a different part of the wall.

# Hotels

CONFIDENTIAL

### CONFUCIANISM



THE GREAT CHINESE PHILOSOPHER, CONFUCIUS WAS BORN IN THE JINAN PROVINCE. HIS SIX PRINCIPLES OF LITERACY, MUSIC, ARCHERY, CHARIOTTERING, ARITHMETIC & PROPRIETY ARE THE GOLDEN RULES THAT FORM A FRAMEWORK OF VIRTUES OF HUMANISM. THESE SIX PRINCIPLES ARE INTERCONNECTED AND DEPENDENT ON EACH OTHER & HAS BEEN AN INSPIRATION FOR SOME OF THE KEY FEATURES THROUGH OUR DESIGN JOURNEY.

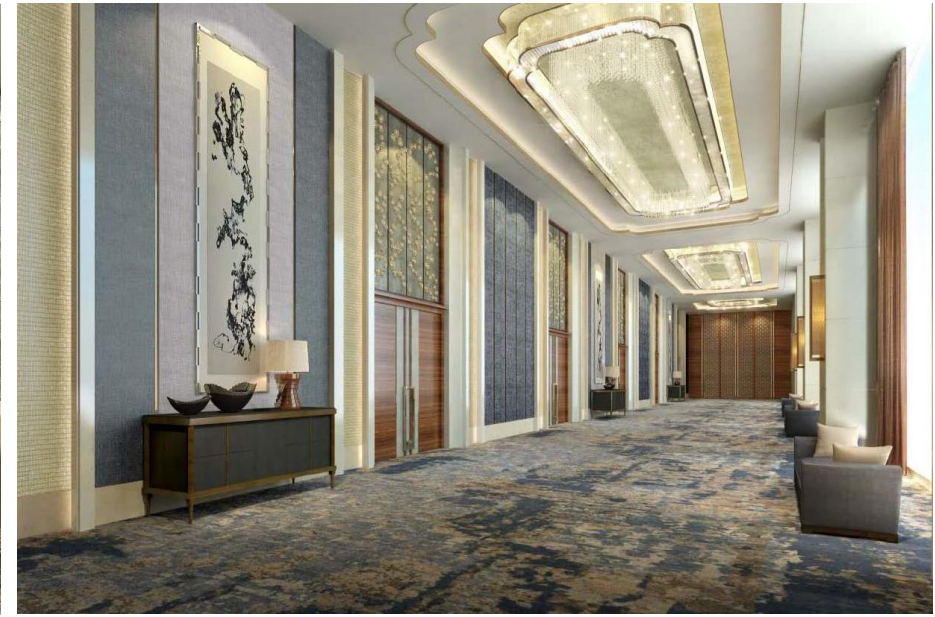
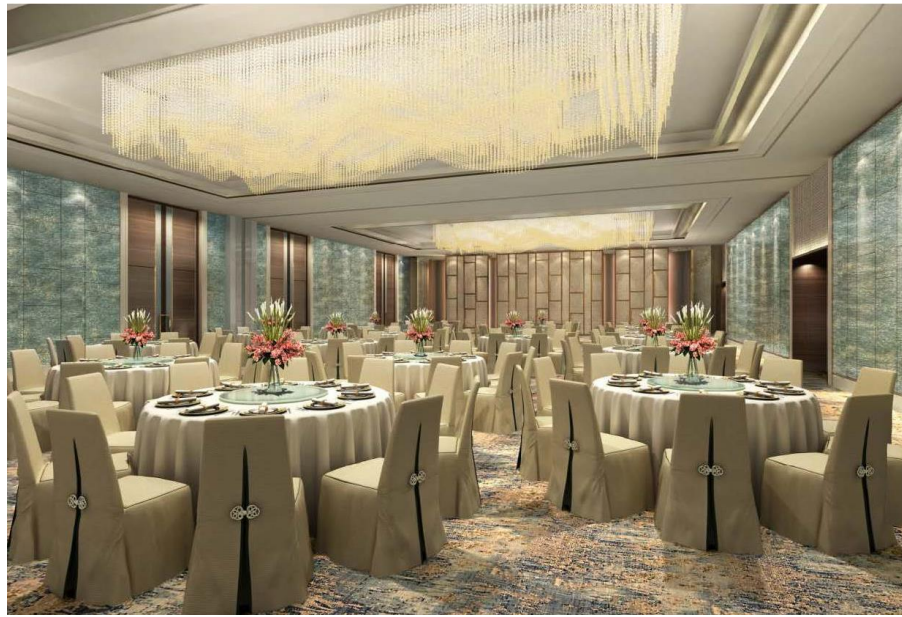
### BAOTU SPRING PARK



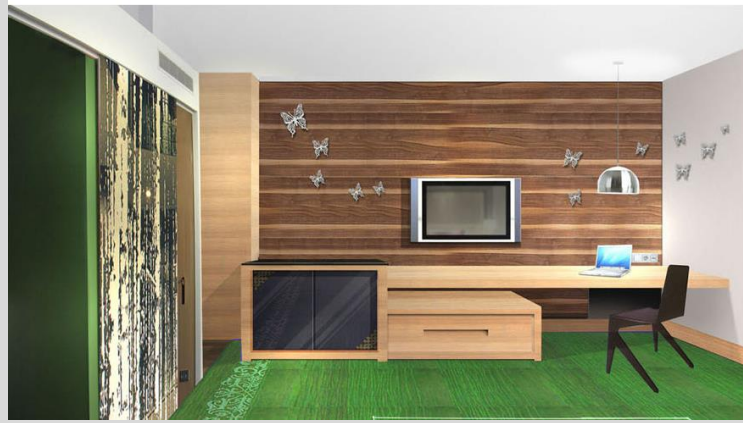
VISITED BY EMPERORS, IT HAS BEEN AN INSPIRATION FOR POETS, PAINTERS & SCHOLARS



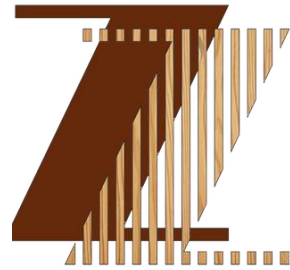
SHANGRI-LA HOTEL  
LOBBY & BANQUET HALL  
\\ JINAN, CHINA







Hotel Room  
\\ SHIHEZI, XINJIANG CHINA



[www.zzmillwork.ca](http://www.zzmillwork.ca)

2051 Viceroy Pl #100, Richmond, BC V6V 1Y9

+16042855355