

FAMILY HOME | 3 LEVELS | FULLY DEVELOPED BASEMENT | WALK-OUT | 5 BEDROOMS | DOUBLE GARAGE

NEIGHBORHOOD

TUSCANY

SIZE | SQ.FT

+/- 2,800 SQ.FT | 3 LEVELS

BED | BATHS

5 BEDS | 3.5 BATHS

BASEMENT

FULLY DEVELOPED | WALKOUT |
2 BEDROOMS | 1 BATH |
RECREATION ROOM

PARKING

DOUBLE ATTACHED



LEASE DETAILS

MONTHLY RENT

\$3500 + UTILITIES

SECURITY DEPOSIT

One Month's Rent

UTILITIES INCLUDED

Heat | Water

UTILITIES EXCLUDED

Electricity

AVAILABILITY

AUGUST 1, 2024

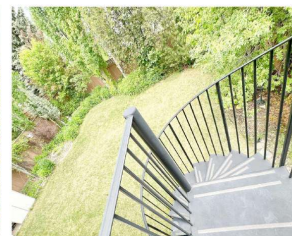
PET POLICY

NO PETS



PROPERTY FEATURES

Home Sweet Home | Tuscany NW, Calgary +2800 SQ.FT of living space. Fully developed walkout basement totalling 5 bedrooms, 3.5-bathroom. Large Deck looking into a private landscaped yard . Double attached garage.



FAMILY HOME | 3 LEVELS | FULLY DEVELOPED BASEMENT | WALK-OUT | 5 BEDROOMS | DOUBLE GARAGE

5-BEDROOM FAMILY HOME WITH WALKOUT BASEMENT IN TUSCANY NW CALGARY

2,880 square feet of living space, including a developed walkout level - 5-bedroom, 3.5-bathroom home located in the desirable Tuscany community of Calgary NW.

Main floor features a beautiful kitchen with granite countertops, high-end appliances, and a cozy breakfast nook. The great room, with soaring ceilings windows and gas fireplace with an office and laundry room for added convenience.

Upstairs, the master suite boasts a walk-in closet and a luxurious ensuite with a Jacuzzi tub and separate shower. The walkout level provides a spacious family room, two additional bedrooms, and a 3-piece bathroom.

Enjoy outdoor living on the large deck with a gas BBQ hookup and landscaped yard!



FAMILY HOME | 3 LEVELS | FULLY DEVELOPED BASEMENT | WALK-OUT | 5 BEDROOMS | DOUBLE GARAGE



5-bedroom, 3.5-bathroom home in Tuscany NW, Calgary, offers 2,880 sq ft of living space, including a developed walkout level. Features include a kitchen with granite countertops, travertine flooring, high-end appliances, and a breakfast nook. The master suite has a walk-in closet and a 4pc ensuite with Jacuzzi. The basement includes a family room, game room, and 3pc bath. Enjoy a large deck with a gas BBQ hookup, landscaped yard with fruit trees, and a double attached garage.

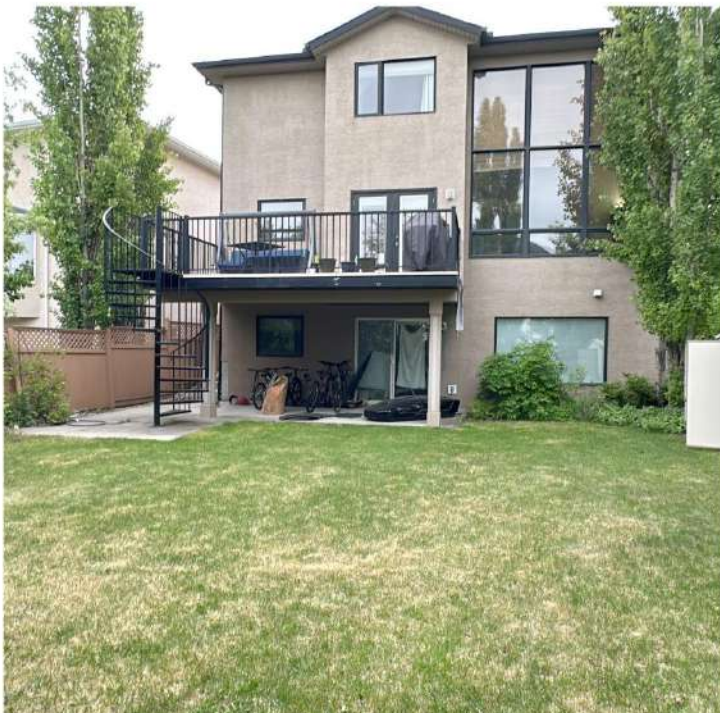


FAMILY HOME | 3 LEVELS | FULLY DEVELOPED BASEMENT | WALK-OUT | 5 BEDROOMS | DOUBLE GARAGE



5-bedroom, 3.5-bathroom home in Tuscany NW, Calgary, offers 2,880 sq ft of living space, including a developed walkout level. Features include a kitchen with granite countertops, travertine flooring, high-end appliances, and a breakfast nook. The master suite has a walk-in closet and a 4pc ensuite with Jacuzzi. The basement includes a family room, game room, and 3pc bath. Enjoy a large deck with a gas BBQ hookup, landscaped yard with fruit trees, and a double attached garage.





FAMILY HOME | 3 LEVELS | FULLY DEVELOPED BASEMENT | WALK-OUT | 5 BEDROOMS | DOUBLE GARAGE



FAMILY HOME | 3 LEVELS | FULLY DEVELOPED BASEMENT | WALK-OUT | 5 BEDROOMS | DOUBLE GARAGE



FAMILY HOME | 3 LEVELS | FULLY DEVELOPED BASEMENT | WALK-OUT | 5 BEDROOMS | DOUBLE GARAGE



FAMILY HOME | 3 LEVELS | FULLY DEVELOPED BASEMENT | WALK-OUT | 5 BEDROOMS | DOUBLE GARAGE



FAMILY HOME | 3 LEVELS | FULLY DEVELOPED BASEMENT | WALK-OUT | 5 BEDROOMS | DOUBLE GARAGE



FAMILY HOME | 3 LEVELS | FULLY DEVELOPED BASEMENT | WALK-OUT | 5 BEDROOMS | DOUBLE GARAGE



FAMILY HOME | 3 LEVELS | FULLY DEVELOPED BASEMENT | WALK-OUT | 5 BEDROOMS | DOUBLE GARAGE



FAMILY HOME | 3 LEVELS | FULLY DEVELOPED BASEMENT | WALK-OUT | 5 BEDROOMS | DOUBLE GARAGE



FAMILY HOME | 3 LEVELS | FULLY DEVELOPED BASEMENT | WALK-OUT | 5 BEDROOMS | DOUBLE GARAGE



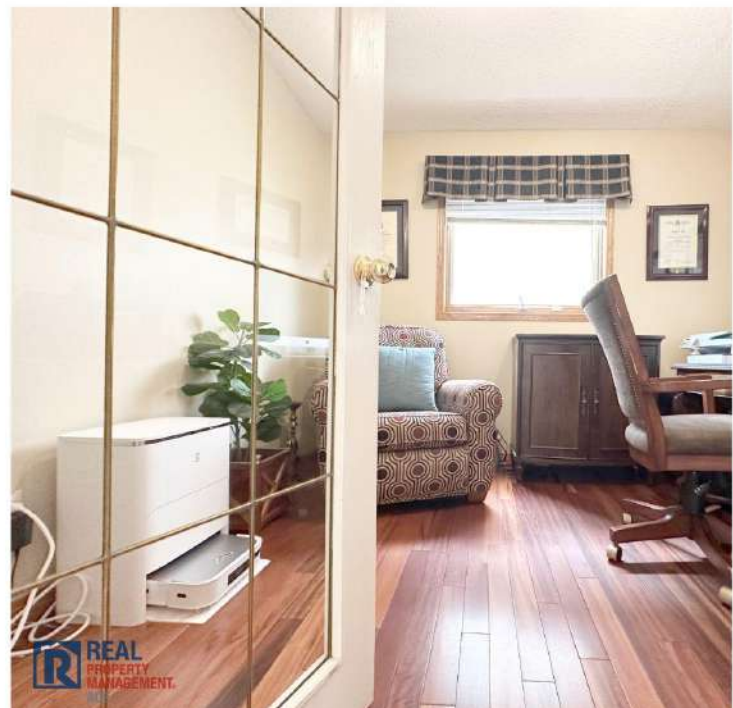
FAMILY HOME | 3 LEVELS | FULLY DEVELOPED BASEMENT | WALK-OUT | 5 BEDROOMS | DOUBLE GARAGE



FAMILY HOME | 3 LEVELS | FULLY DEVELOPED BASEMENT | WALK-OUT | 5 BEDROOMS | DOUBLE GARAGE



FAMILY HOME | 3 LEVELS | FULLY DEVELOPED BASEMENT | WALK-OUT | 5 BEDROOMS | DOUBLE GARAGE



FAMILY HOME | 3 LEVELS | FULLY DEVELOPED BASEMENT | WALK-OUT | 5 BEDROOMS | DOUBLE GARAGE



FAMILY HOME | 3 LEVELS | FULLY DEVELOPED BASEMENT | WALK-OUT | 5 BEDROOMS | DOUBLE GARAGE



FAMILY HOME | 3 LEVELS | FULLY DEVELOPED BASEMENT | WALK-OUT | 5 BEDROOMS | DOUBLE GARAGE



FAMILY HOME | 3 LEVELS | FULLY DEVELOPED BASEMENT | WALK-OUT | 5 BEDROOMS | DOUBLE GARAGE

