

THE CONCORD

UNIT 312, 738 - 1st Ave SW



PRIVATE RESIDENCE WITH PRIVATE ELEVATOR

- RENT:** FULLY FURNISHED: \$6000.000/Month
- SIZE:** +/- 1769 sq.ft
- BEDROOMS:** 2 Bedrooms, Private Ensuites & Balcony Access
- PARKING:** Private Double Garage

Calgary's newest luxury high-rise, is the most grand condo development the City has yet seen. Be the first to live here!

ROMANIA LEO

403.816.2308

ace@realpropertymgt.ca

www.rpmace.ca



THE CONCORD



ROMANIA LEO

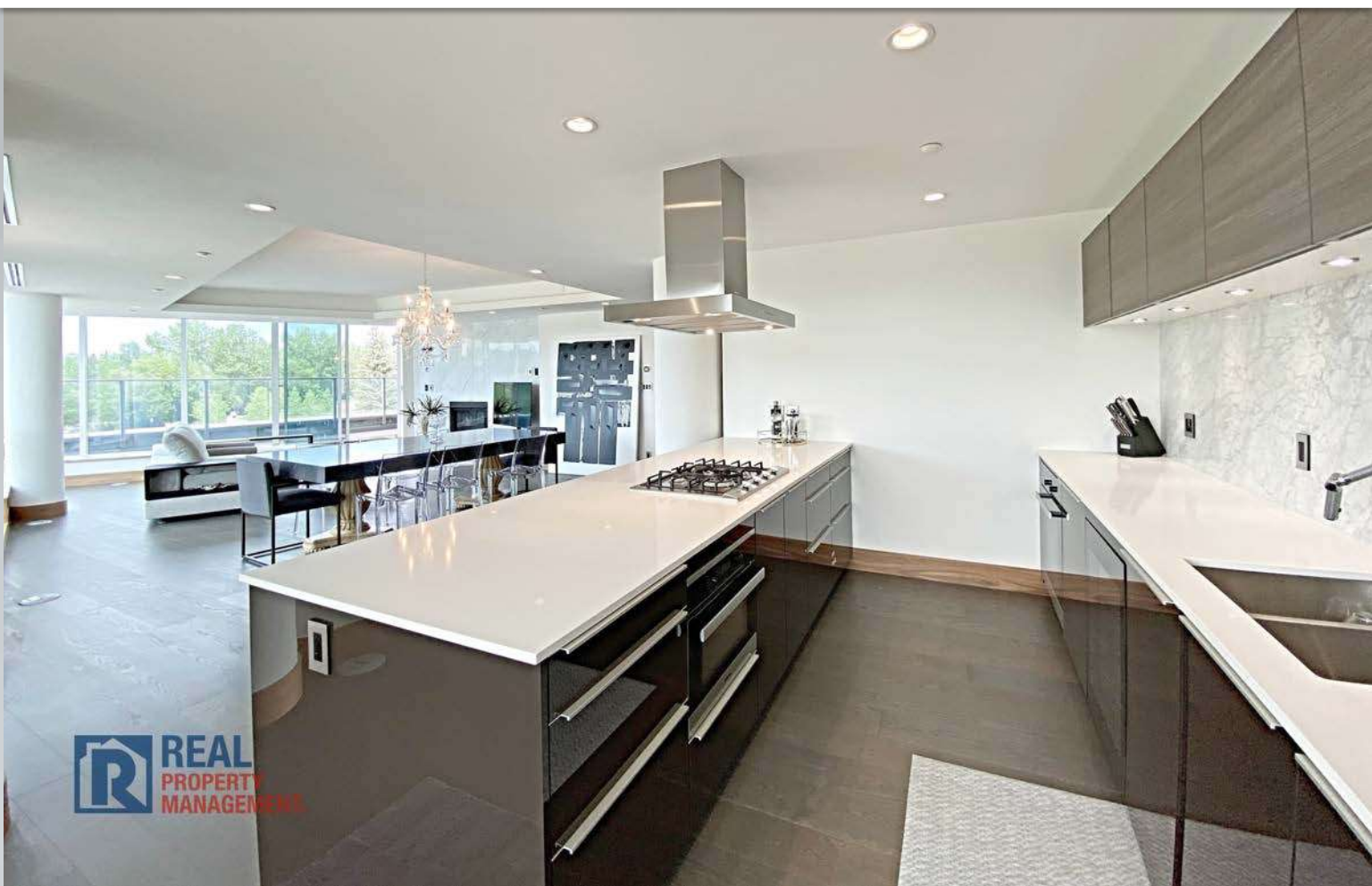
403.816.2308

ace@realpropertymgt.ca

www.rpmace.ca



THE CONCORD



ROMANIA LEO

403.816.2308

ace@realpropertymgt.ca

www.rpmace.ca



THE CONCORD



ROMANIA LEO

403.816.2308

ace@realpropertymgt.ca

www.rpmace.ca



THE CONCORD



 **REAL**
PROPERTY
MANAGEMENT.



ROMANIA LEO

403.816.2308

ace@realpropertymgt.ca

www.rpmace.ca

 **REAL**
PROPERTY
MANAGEMENT.
CENTRAL

THE CONCORD



THE CONCORD



 **REAL**
PROPERTY
MANAGEMENT.



ROMANIA LEO

403.816.2308

ace@realpropertymgt.ca

www.rpmace.ca

 **REAL**
PROPERTY
MANAGEMENT.
CENTRAL.

THE CONCORD



 REAL
PROPERTY
MANAGEMENT.



 REAL
PROPERTY
MANAGEMENT.



ROMANIA LEO

403.816.2308

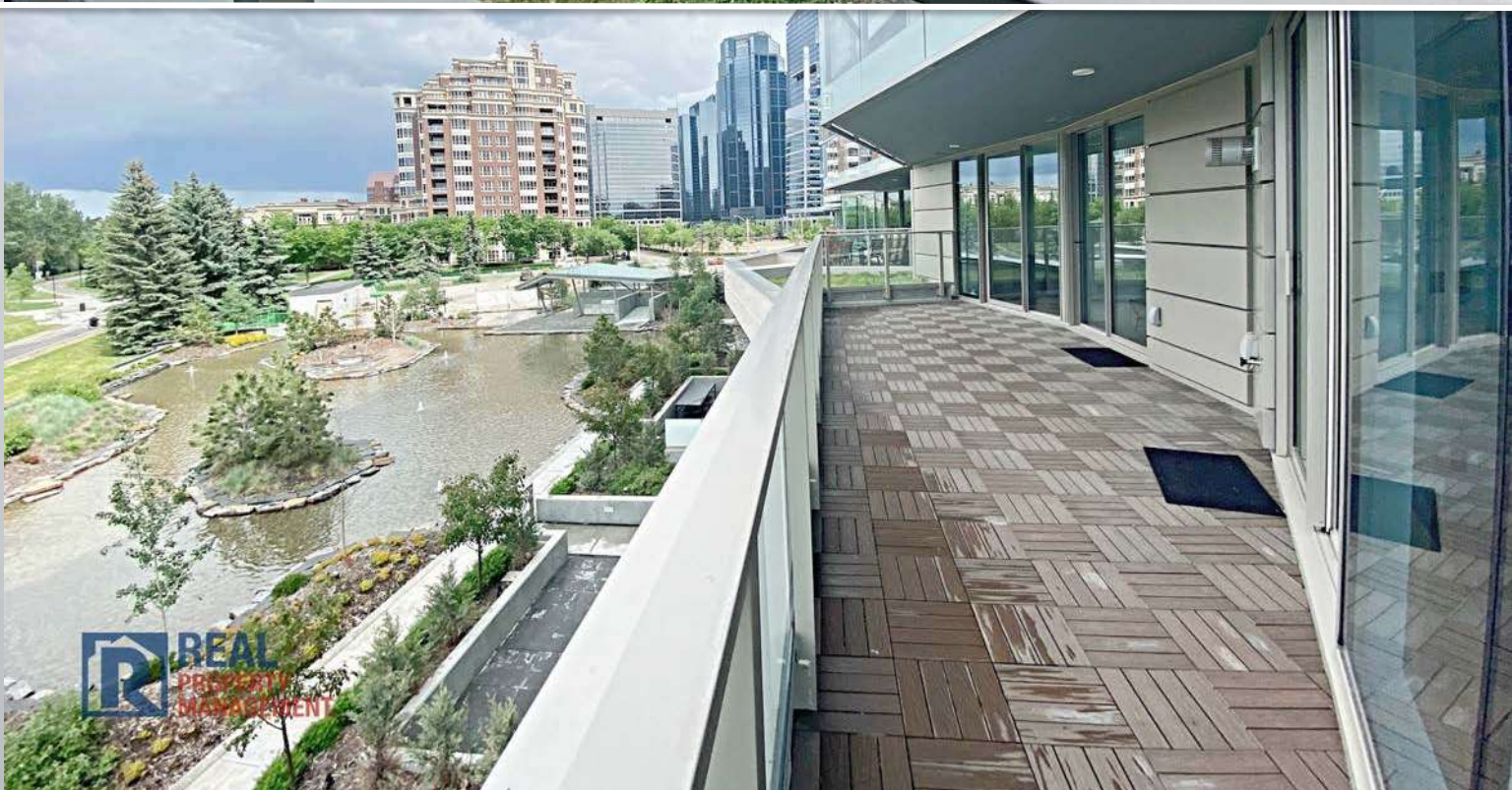
ace@realpropertymgt.ca

www.rpmace.ca

 REAL
PROPERTY
MANAGEMENT.
CENTRAL

THE CONCORD

PANORAMIC VIEWS.
EVERY ANGLE.



ROMANIA LEO

403.816.2308

ace@realpropertymgt.ca

www.rpmace.ca



THE CONCORD



LUXURIOUS MASTER & GUEST BEDROOM WITH ENSUITE



ROMANIA LEO

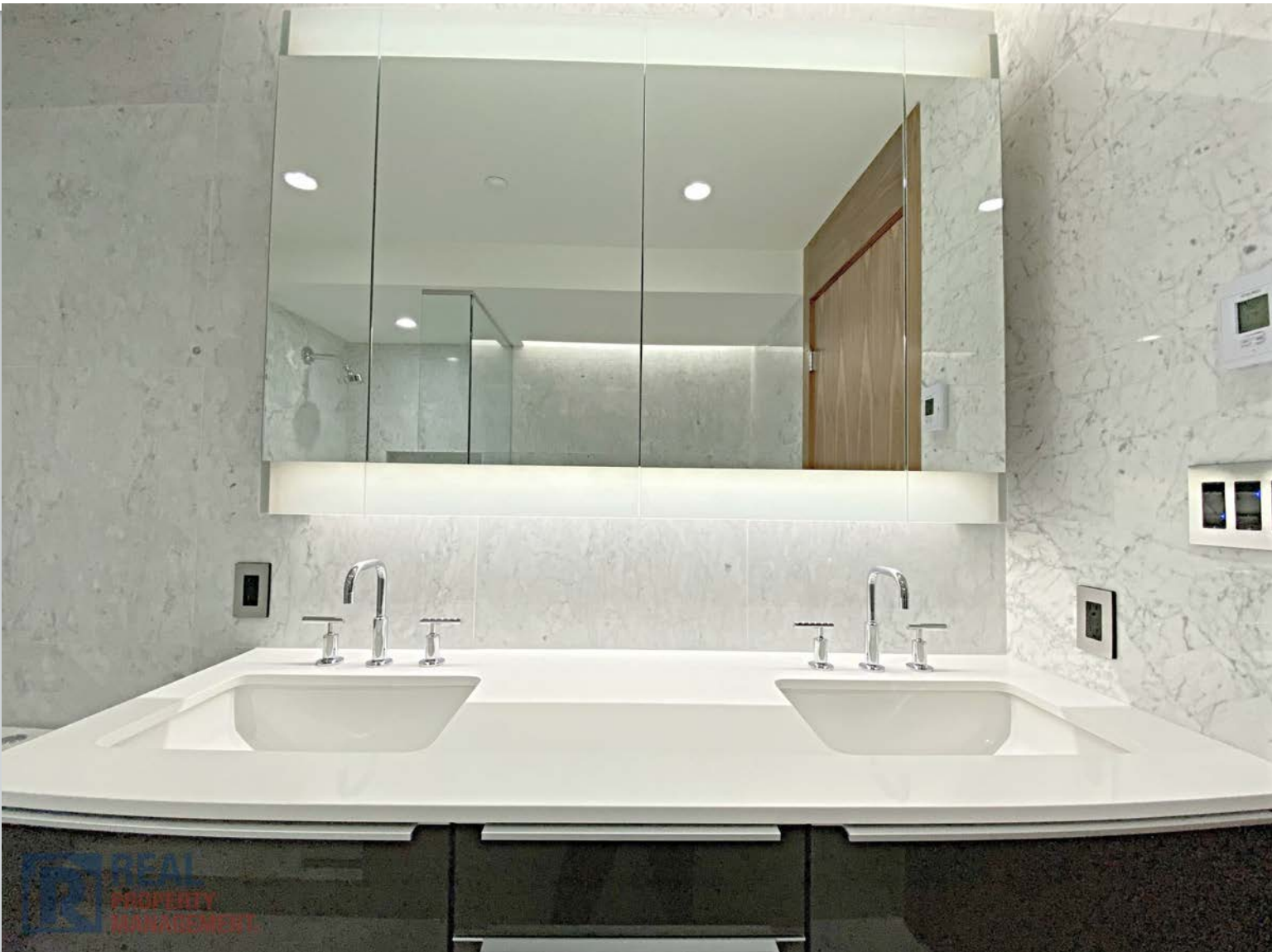
403.816.2308

ace@realpropertymgt.ca

www.rpmace.ca



THE CONCORD



ROMANIA LEO

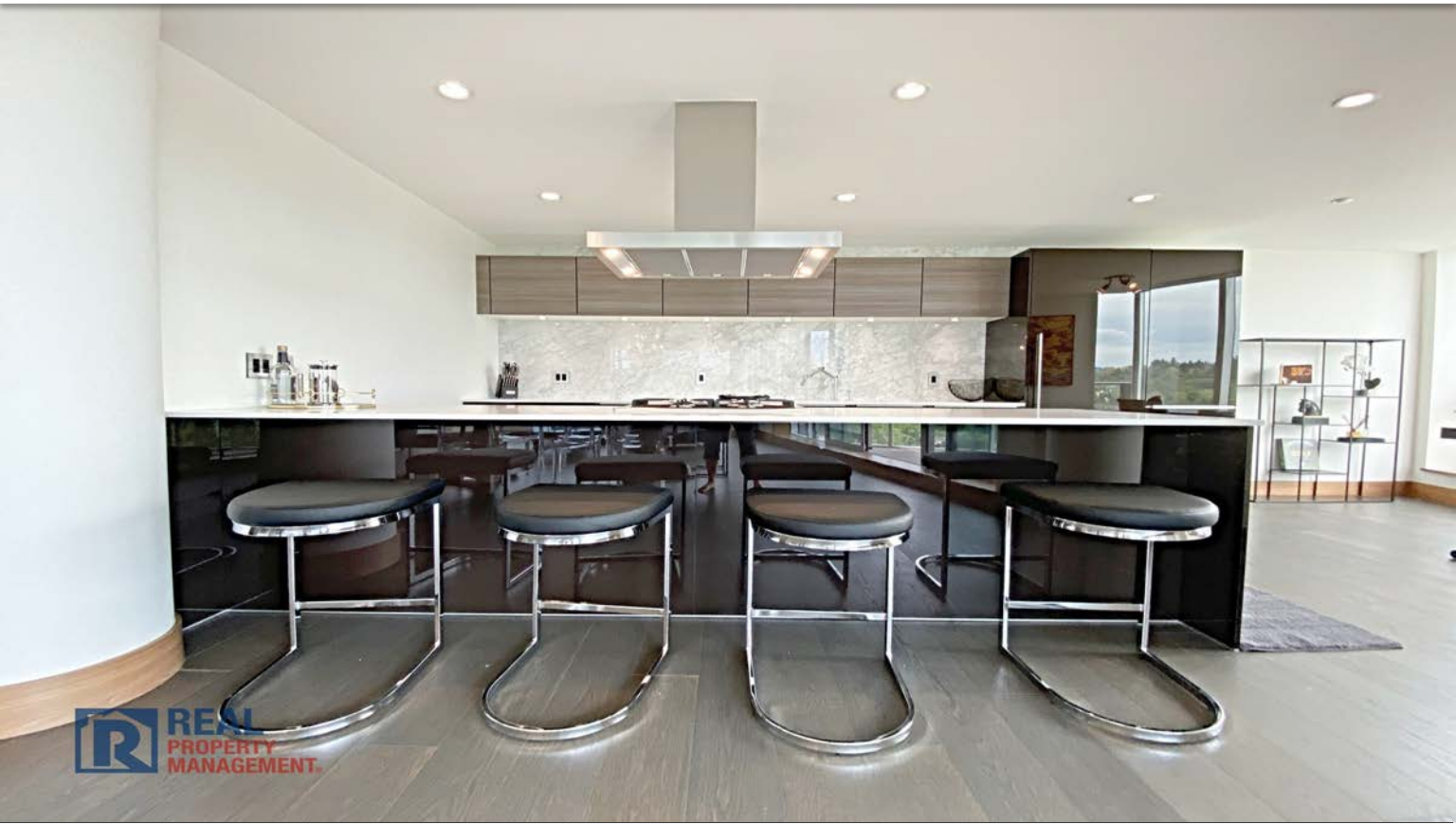
403.816.2308

ace@realpropertymgt.ca

www.rpmace.ca



THE CONCORD



HIGH END KITCHEN APPLIANCES



ROMANIA LEO

403.816.2308

ace@realpropertymgt.ca

www.rpmace.ca



THE CONCORD

PRIVATE RESIDENCE PLAN E1

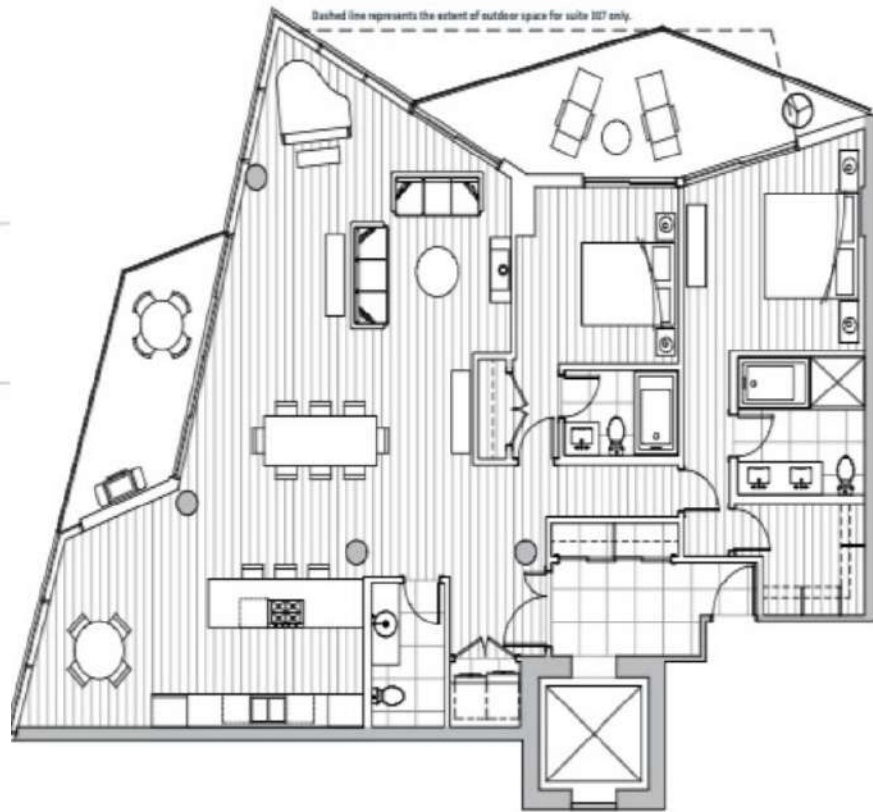
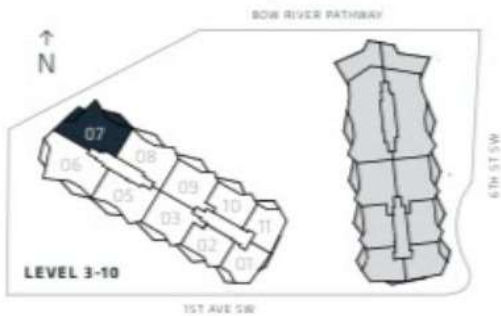
2 BEDROOM & NOOK

SUITE '07:

ENCLOSED AREA	OUTDOOR SPACE	TOTAL AREA
1,769 SF	282 SF	2,051 SF

SUITE 307:

ENCLOSED AREA	OUTDOOR SPACE	TOTAL AREA
1,769 SF	332 SF	2,101 SF



Located along Bow Riverfront, in front of the Peace bridge. A short walk from Prince's Island Park, Eau Claire, Chinatown. Heart of Downtown.

Unobstructed 360 degree views of Calgary's Prince's Island, and Calgary's popular Peace Bridge on the Bow River. Brand new, never lived in. 1700sf+ Private Residence at The Concord, with your own private elevator entrance! The Concord is Calgary's newest luxury high-rise, is the 1 most grand condo development the City has yet seen. Be the first to live in this Executive Suite

This rare gem features 2 Bedroom 2 Bathroom Penthouse style Private Residence. Luxurious high-end finishings and a very spacious layout. Elegant white marble heated floors in bathrooms, massive private outdoor terraces with views of the Bow River.



ROMANIA LEO

403.816.2308

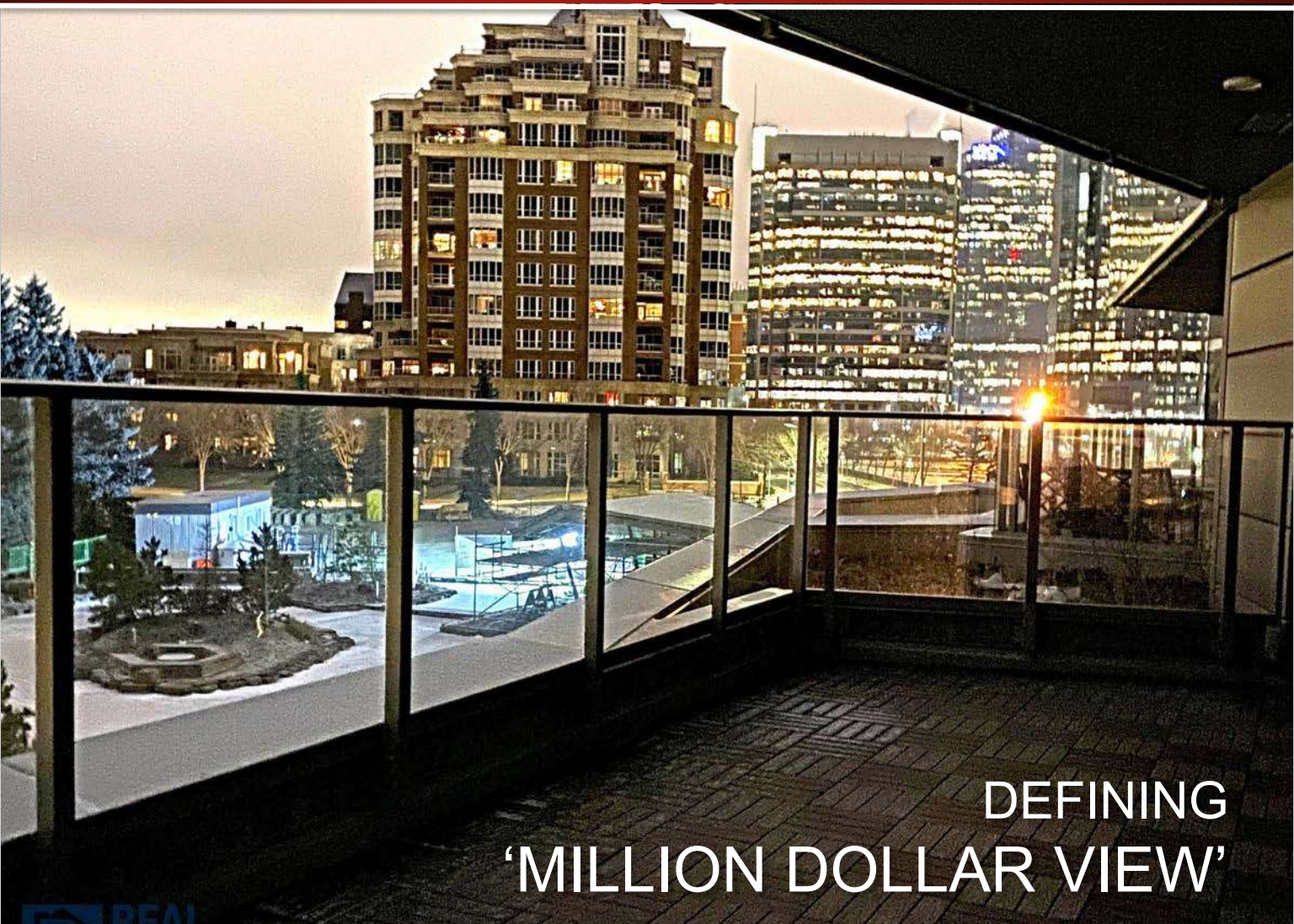
ace@realpropertymgt.ca

www.rpmace.ca



THE CONCORD

FOR LEASE: UNIT 312



DEFINING
'MILLION DOLLAR VIEW'



ROMANIA LEO

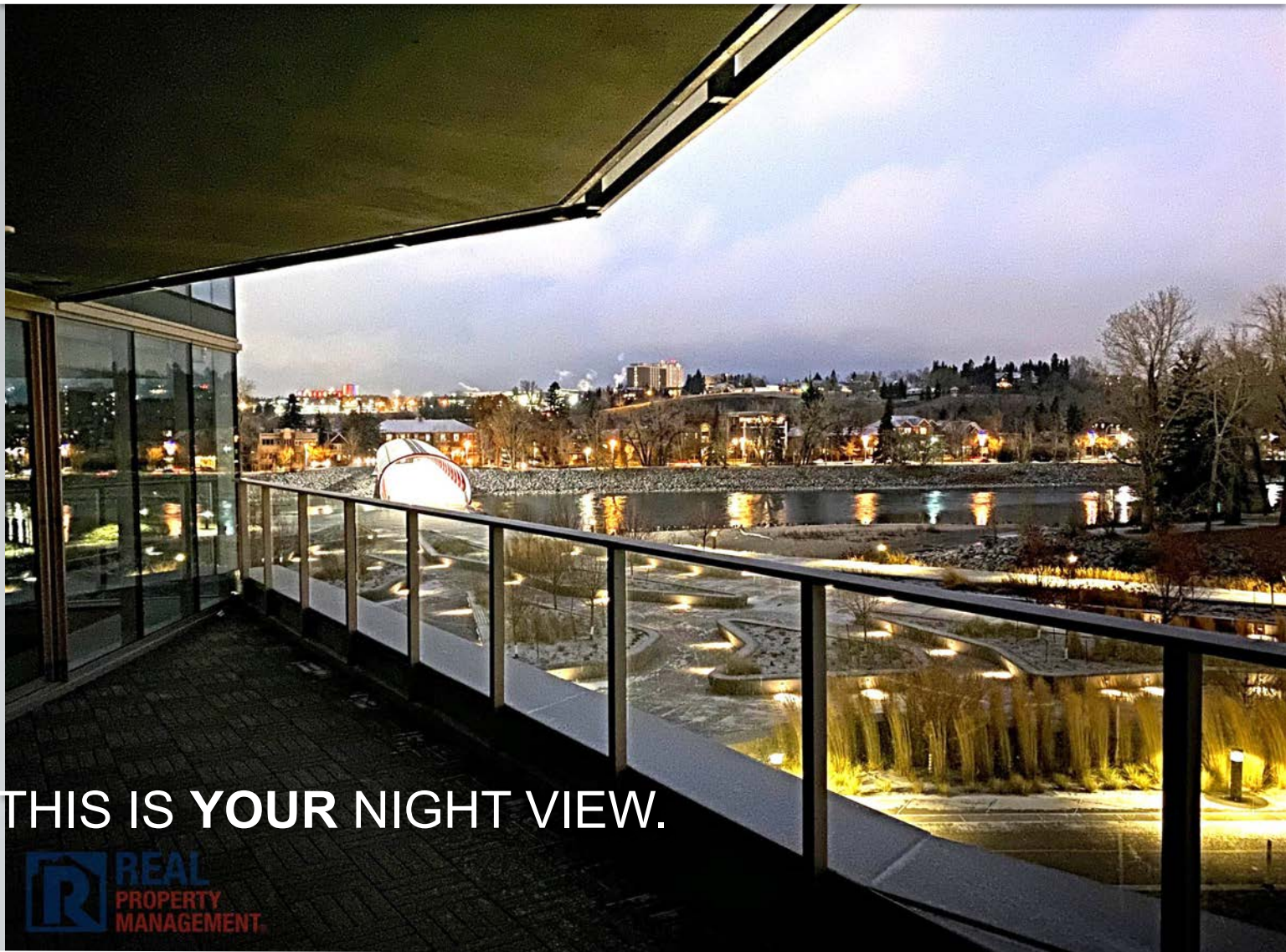
403.816.2308

ace@realpropertymgt.ca

www.rpmace.ca



THE CONCORD



THIS IS YOUR NIGHT VIEW.



ROMANIA LEO

403.816.2308

ace@realpropertymgt.ca

www.rpmace.ca



THE CONCORD



ROMANIA LEO

403.816.2308

ace@realpropertymgt.ca

www.rpmace.ca



THE CONCORD



The Concord exemplifies luxury riverfront living, with close proximity to downtown Calgary 24-hour concierge service and security are present within the Concord; summer water garden, ice skating rink in the winter; and the Fitness Centre right in the building.



ROMANIA LEO

403.816.2308

ace@realpropertymgt.ca

www.rpmace.ca

