

THE CONCORD

AMAZING VIEWS OF PEACE BRIDGE

Brand New 2 bedrooms, 2 Bath, facing the Bow River with amazing views! This Luxurious design features floor-to-ceiling windows and marble fireplace provides for ambiance for the dining and living room. The gourmet Poggenpohl designed kitchen features a built-in wine cooler, Miele appliances (with gas cooktop)!



RENT: UNFURNISHED: \$3,600.000/Month
SIZE: +/- 1060 sq.ft (Builder Size)
FEATURES: 2 Bedrooms + Den, 2 Bath
PARKING: 1 PARKING (2nd Stall Available; Additional \$
AVAILABLE: Immediate **TERM:** 1 Yr. Preferred/Negotiable
INCLUDES: Heat, Water, Electricity

ROMANIA LEO

ace@realpropertymgmt.ca www.rpmace.ca

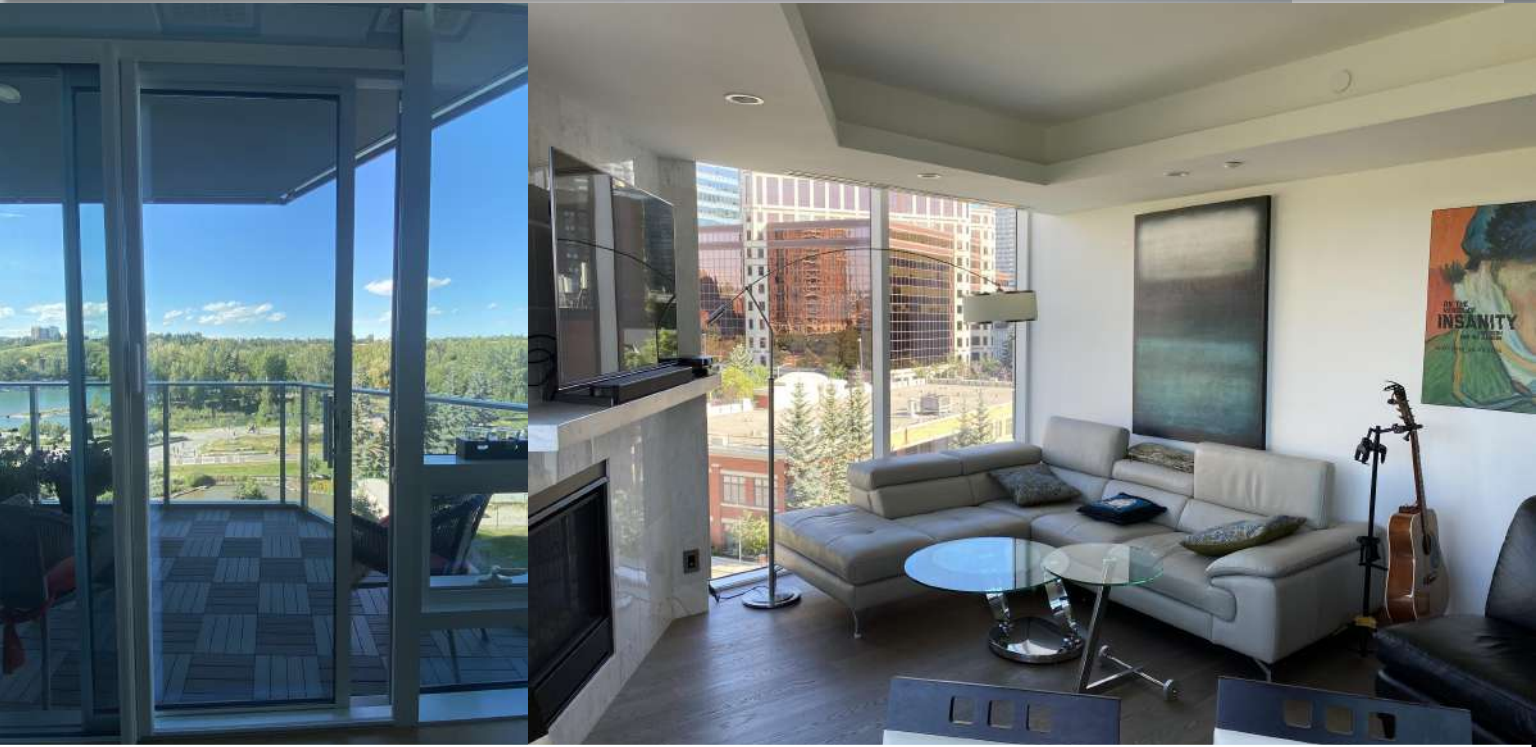
Broker: Real Property Management Central | Calgary | AB



Each Office Independently Owned and Operated.

THE CONCORD

AMAZING VIEWS OF PEACE BRIDGE



ROMANIA LEO

ace@realpropertymgt.ca www.rpmace.ca

Broker: Real Property Management Central | Calgary | AB



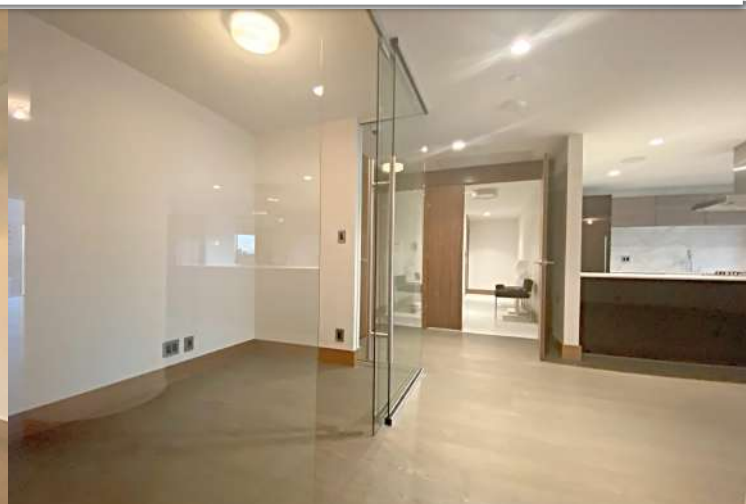
REAL
PROPERTY
MANAGEMENT[®]
CENTRAL

Each Office Independently Owned and Operated.

THE CONCORD

+/- 1,300 Sq.Ft. 2 Bed 2 Bath + Den West River Views

The master suite features full-height view windows/glass door to private sundeck. The spa-like ensuite features a glass shower + deep-soaking experience with the drop-in tub. Both bathrooms offer an "oasis-like" experience (custom marble counters plus recessed lighting, in-floor heating & chandelier accent lighting). The master closet is customized with luxurious "Poliform" closet built-ins. The second bedroom is spacious with floor-to-ceiling windows, a custom closet with built-ins & an adjacent laundry area. This home was purchased with the separate double car garage with large storage room. At the heart of "The Concord" is the central summer garden & water feature - a perfect place to relax/entertain on a warm summer's evening - a "lake-side retreat in the city"! In the winter, water feature becomes an ice-skating rink with an outdoor fire pit. The poolside lounge allows you be the best host! A full-facility gym, plus yoga studio, automatic car wash!!, plus an upcoming hi-tech golf simulator & pool are some of the additional amenities this one-of-a-kind RIVERFRONT property offers. "No Flood" foundation.



ROMANIA LEO

ace@realpropertymgt.ca www.rpmace.ca

Broker: Real Property Management Central | Calgary | AB

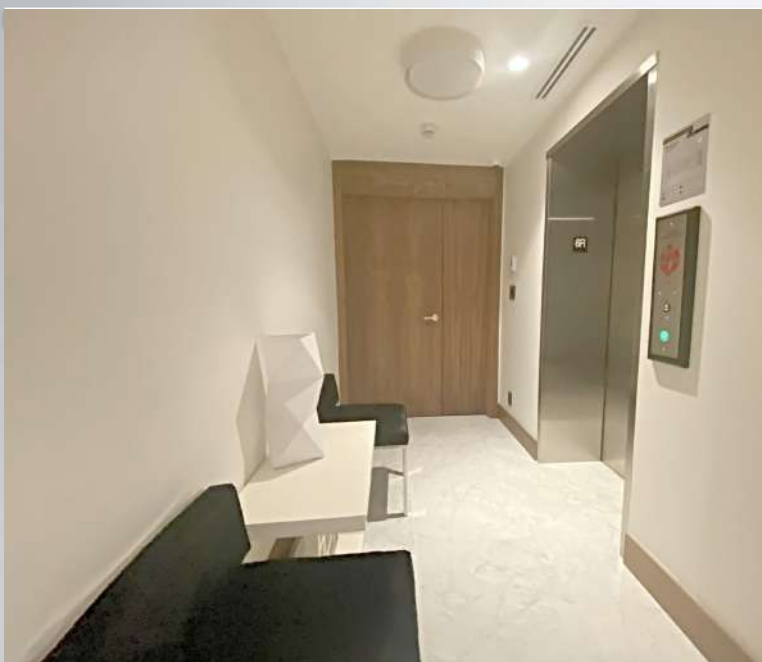


REAL PROPERTY MANAGEMENT CENTRAL

Each Office Independently Owned and Operated.

THE CONCORD

Private Elevator. 2 Car Garage. 24/7 Concierge/Security



ROMANIA LEO

ace@realpropertymgt.ca www.rpmace.ca

Broker: Real Property Management Central | Calgary | AB



REAL
PROPERTY
MANAGEMENT
CENTRAL

Each Office Independently Owned and Operated.

FOR LEASE

UNIT 2903, 510 - 6 AVE SE

EAST VILLAGE, EVOLUTION PULSE



SIZE: 1,213 sq.ft **BATHROOMS:** 2 Bathrooms
ROOMS: 2 Bedrooms + Den **PARKING:** 2 Heated Underground
RENT: \$3,300.00 *Includes Heat, water, electricity, Internet
*Shorter Terms available at a higher rate.
AVAILABLE: IMMEDIATE



ROMANIA LEO

403.816.2308

ace@realpropertymgt.ca

www.rpmace.ca



FOR LEASE

UNIT 2903, 510 - 6 AVE SE

EAST VILLAGE, EVOLUTION PULSE



ROMANIA LEO

403.816.2308

ace@realpropertymgt.ca

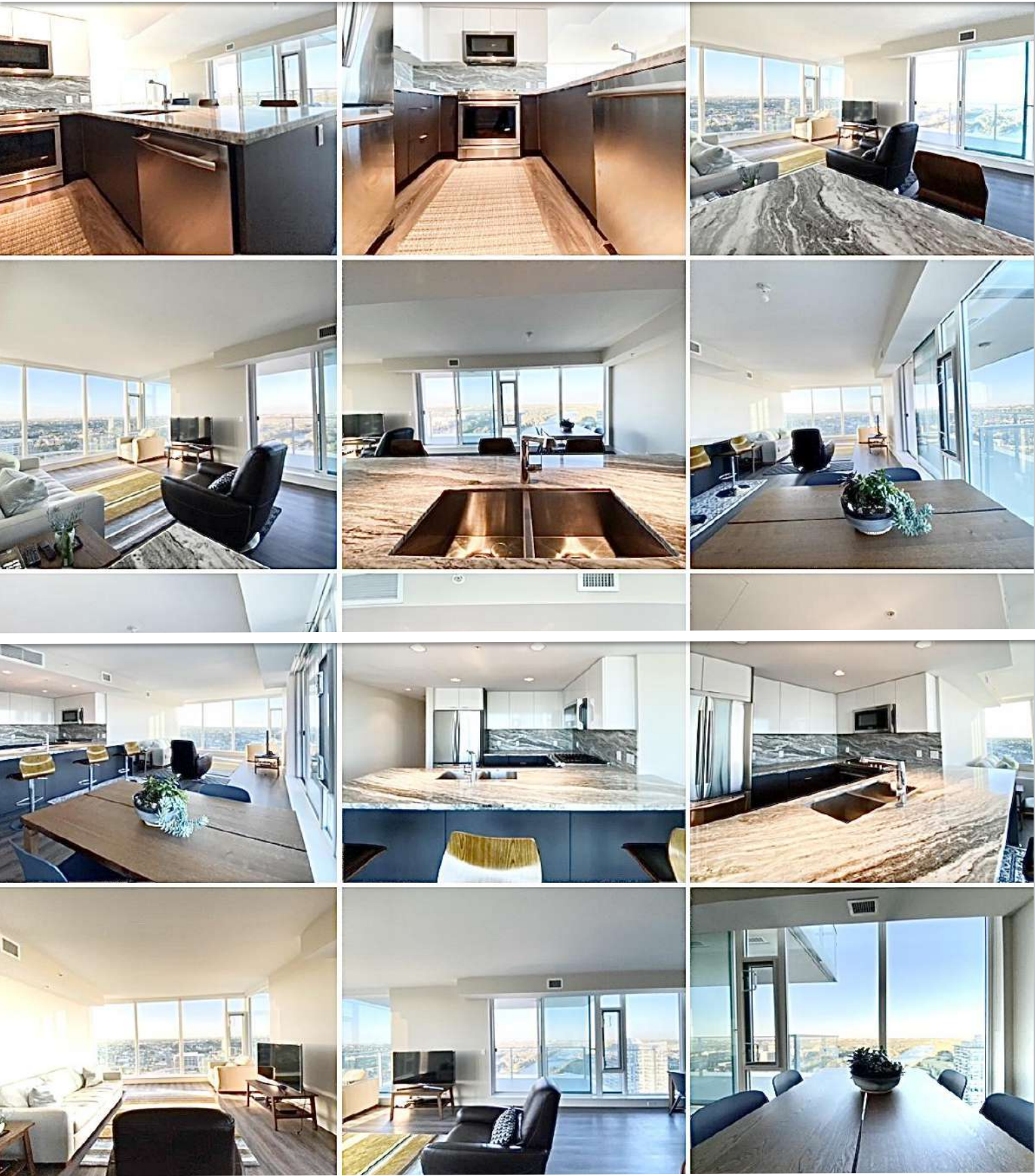
www.rpmace.ca



Each Office Independently Owned and Operated. Broker: Real Property Management Central 300, 5 Richard Way SW | Calgary

FOR LEASE

#2903, 510 6 AVENUE SE



ROMANIA LEO

403.816.2308

ace@realpropertymgt.ca

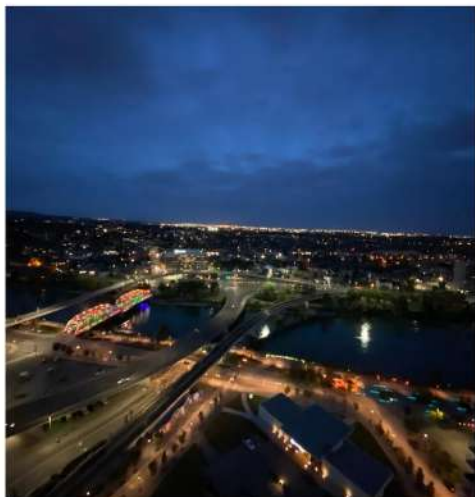
www.rpmace.ca



Each Office Independently Owned and Operated. Broker: Real Property Management Central 300, 5 Richard Way SW | Calgary

FOR LEASE

#2903, 510 6 AVENUE SE



INNER CITY Lifestyle. FURNISHED. PANORAMIC VIEW

ROMANIA LEO

403.816.2308

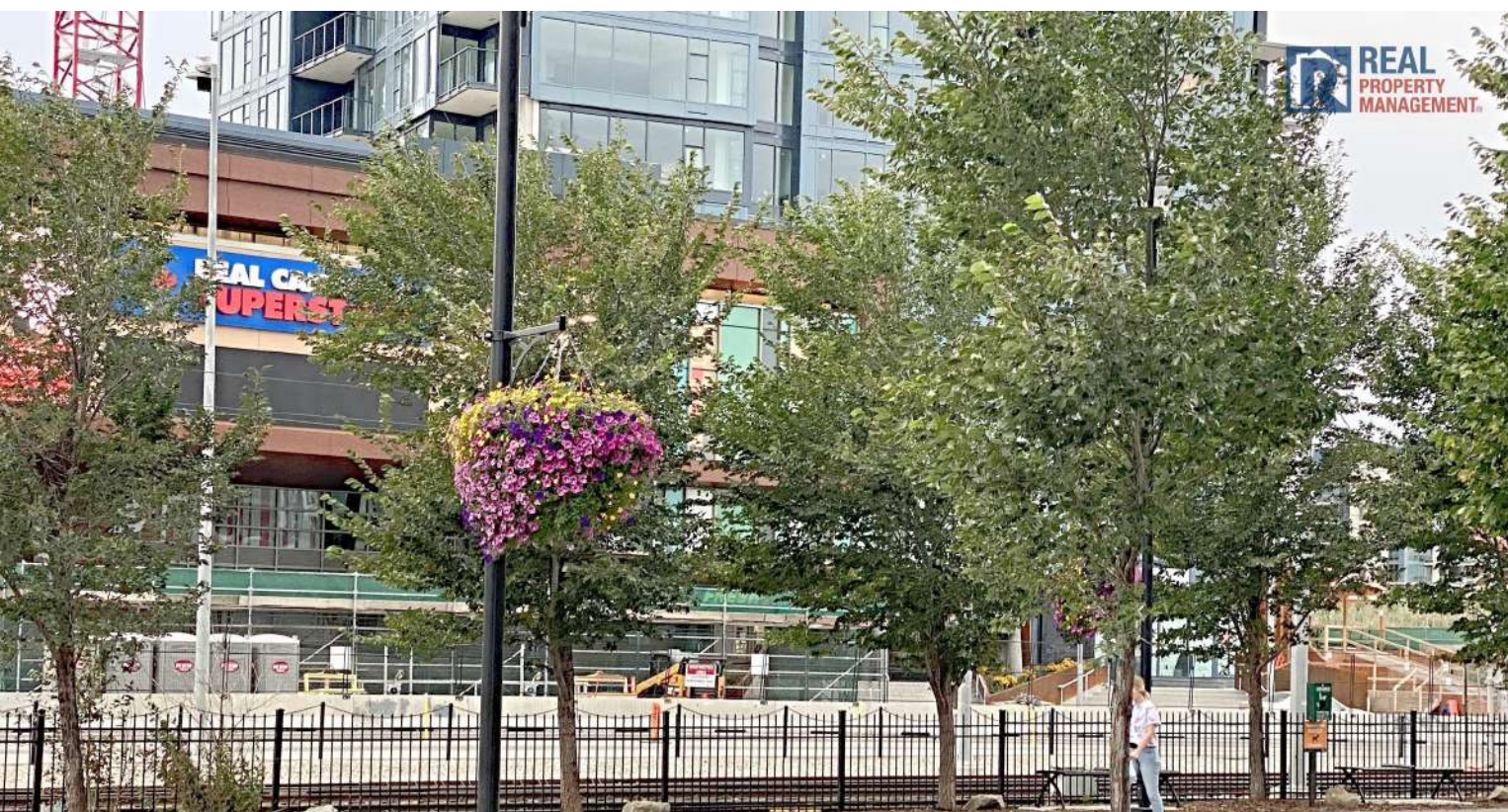
ace@realpropertymgt.ca

www.rpmace.ca



Each Office Independently Owned and Operated. Broker: Real Property Management Central 300, 5 Richard Way SW | Calgary

LIVING IN EAST VILLAGE



INNER CITY Lifestyle. FURNISHED. PANORAMIC VIEW

ROMANIA LEO

403.816.2308

ace@realpropertymgt.ca

www.rpmace.ca



Each Office Independently Owned and Operated. Broker: Real Property Management Central 300, 5 Richard Way SW | Calgary

FOR LEASE: ERLTON STREET



ROMANIA LEO

403.816.2308

ace@realpropertymgt.ca

www.rpmace.ca



Each Office Independently Owned and Operated. Broker: Real Property Management Central 300, 5 Richard Way SW | Calgary

FOR LEASE

110, 2320 Erlton Street SW



ROMANIA LEO

403.816.2308

ace@realpropertymgt.ca

www.rpmace.ca



Each Office Independently Owned and Operated. Broker: Real Property Management Central 300, 5 Richard Way SW | Calgary

FOR LEASE

110, 2320 Erlton Street SW



ROMANIA LEO

403.816.2308

ace@realpropertymgt.ca

www.rpmace.ca



Each Office Independently Owned and Operated. Broker: Real Property Management Central 300, 5 Richard Way SW | Calgary

FOR LEASE



ROMANIA LEO

403.816.2308

ace@realpropertymgt.ca

www.rpmace.ca



Each Office Independently Owned and Operated. Broker: Real Property Management Central 300, 5 Richard Way SW | Calgary

FOR LEASE



ROMANIA LEO

403.816.2308

ace@realpropertymgt.ca

www.rpmace.ca



Each Office Independently Owned and Operated. Broker: Real Property Management Central 300, 5 Richard Way SW | Calgary

REMIND YOU OF HOME?



ROMANIA LEO

403.816.2308

ace@realpropertymgt.ca

www.rpmace.ca



Each Office Independently Owned and Operated. Broker: Real Property Management Central 300, 5 Richard Way SW | Calgary

110, 2320 Erlton Street SW



ROMANIA LEO

403.816.2308

ace@realpropertymgt.ca

www.rpmace.ca



Each Office Independently Owned and Operated. Broker: Real Property Management Central 300, 5 Richard Way SW | Calgary

FOR RENT

#604, 118 WATERFRONT COURT SW



Executive Furnished 2 Bedroom with Unobstructed Views

North East facing the Bow River with stunning views of clear blue skies, beautiful Bow River, and serene cityscape.

Suite features 2 bedrooms, 2 bathrooms. Your living room and bedroom looks out into Centre Street bridge and Sien Lok Park! Kitchen accentuated with modern, yet simple high gloss cabinetry, breakfast bar, and stainless steel appliances.

Complete with in-suite laundry and secured, heated underground parking and storage locker. Upscale amenities at the Waterfront include: 24/7 Concierge and security, fitness center, guest lounge, theater, beautiful courtyards.



LIVING AT THE WATERFRONT



WATERFRONT PARKSIDE is located in prime downtown Calgary Eau Claire on the Bow River making it all about the lifestyle.

Private owners' lounge with kitchen and entertainment TV

Executive concierge service with after hours security

Private, controlled access to the RiverWalk and Sien Lok Park



ROMANIA LEO

403.816.2308

ace@realpropertymgmt.ca

www.rpmace.ca



Each Office Independently Owned and Operated. Broker: Real Property Management Central 824 – 24th Ave SE Calgary, AB

LIVING AT THE WATERFRONT



ROMANIA LEO
403.816.2308 ace@realpropertymgt.ca www.rpmace.ca
Each Office Independently Owned and Operated. Broker: Real Property Management Central 824 – 24th Ave SE Calgary, AB



THE CONCORD

UNIT 312, 738 - 1st Ave SW



PRIVATE RESIDENCE WITH PRIVATE ELEVATOR

- RENT:** FULLY FURNISHED: \$6000.000/Month
- SIZE:** +/- 1769 sq.ft
- BEDROOMS:** 2 Bedrooms, Private Ensuites & Balcony Access
- PARKING:** Private Double Garage

Calgary's newest luxury high-rise, is the most grand condo development the City has yet seen. Be the first to live here!

ROMANIA LEO
ace@realpropertymgt.ca
www.rpmace.ca 403.816.2308



THE CONCORD



ROMANIA LEO

403.816.2308

ace@realpropertymgt.ca

www.rpmace.ca



THE CONCORD



ROMANIA LEO

403.816.2308

ace@realpropertymgt.ca

www.rpmace.ca



THE CONCORD



 **REAL**
PROPERTY
MANAGEMENT.



ROMANIA LEO

403.816.2308

ace@realpropertymgt.ca

www.rpmace.ca

 **REAL**
PROPERTY
MANAGEMENT.
CENTRAL

THE CONCORD



ROMANIA LEO

403.816.2308

ace@realpropertymgt.ca

www.rpmace.ca



THE CONCORD



 REAL
PROPERTY
MANAGEMENT.



 REAL
PROPERTY
MANAGEMENT.



ROMANIA LEO

403.816.2308

ace@realpropertymgt.ca

www.rpmace.ca

 REAL
PROPERTY
MANAGEMENT.
CENTRAL

THE CONCORD

PANORAMIC VIEWS.
EVERY ANGLE.



ROMANIA LEO

403.816.2308

ace@realpropertymgt.ca

www.rpmace.ca



THE CONCORD



ROMANIA LEO

403.816.2308

ace@realpropertymgt.ca

www.rpmace.ca



THE CONCORD



HIGH END KITCHEN APPLIANCES



ROMANIA LEO

403.816.2308

ace@realpropertymgt.ca

www.rpmace.ca



THE CONCORD

FOR LEASE: UNIT 312



DEFINING
'MILLION DOLLAR VIEW'



ROMANIA LEO

403.816.2308

ace@realpropertymgt.ca

www.rpmace.ca



THE CONCORD



ROMANIA LEO

403.816.2308

ace@realpropertymgt.ca

www.rpmace.ca



THE CONCORD



The Concord exemplifies luxury riverfront living, with close proximity to downtown Calgary 24-hour concierge service and security are present within the Concord; summer water garden, ice skating rink in the winter; and the Fitness Centre right in the building.



ROMANIA LEO

403.816.2308

ace@realpropertymgt.ca

www.rpmace.ca



MOUNT ROYAL MANSION

CALGARY'S MOST GLAMOROUS NEIGHBORHOOD

