

BUILD IT YOURSELF KIT #35B

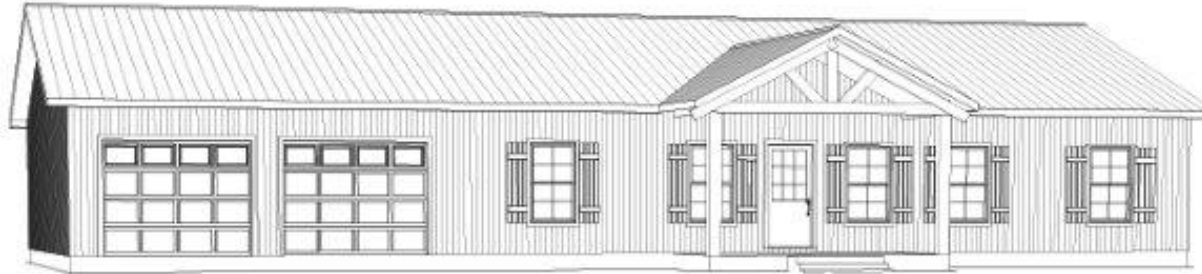
- 30X50X9 BASIC SHELL
- PORCHES AND GARAGE AS SHOWN
- 3 - 3' HOUSE DOORS
- 10 - 3X5 VINYL WINDOWS
- 2 – 3x3 VINYL WINDOWS
- TRUSSES AT 2' ON CENTER ON HOUSE
- TRUSSES AT 4' ON CENTER ON GARAGE
- STUDS AT 16" ON CENTER ON HOUSE
- HOUSE WRAP
- 265' OF INTERIOR FRAMING
- SOFFIT AND FASCIA OVERHANG ON ROOF
- 40 YR WARRANTY 29 GAUGE METAL - 20 COLORS AVAILABLE

➤ *UPGRADE TO OSB & PREMIUM BOARD & BATT METAL SIDING AVAILABLE*

WE DELIVER UP TO 5 HOURS FROM POCAHONTAS, ARKANSAS.

*PLUS TAX & DELIVERY

ADDITIONAL FEES AND SURCHARGES MAY APPLY. PRICES ARE SUBJECT TO CHANGE WITHOUT NOTICE.



Living Area	1500 sf
Porches	675 sf
Garage, Sports, Bath & Storage	921 sf
Total Under Roof	3096 sf

Exterior
Exterior
Exterior
Exterior
Exterior
Exterior

Exterior
Exterior
Exterior
Exterior
Exterior
Exterior

PLAN VIEW

SHEET TITLE:

PROJECT DESCRIPTION
OVERMAN BUILDINGS
Plan #35 Reversed

DRAWINGS PROVIDED BY:
Overman Buildings
1100 Pace Rd.
Pocahontas, AR 72455
870-609-1900

DATE:
10/30/2024

SCALE:
Scale @ 1/8"=1'-0"
1/4"=1'

SHEET:
A-1