

BUILD IT YOURSELF KIT #45

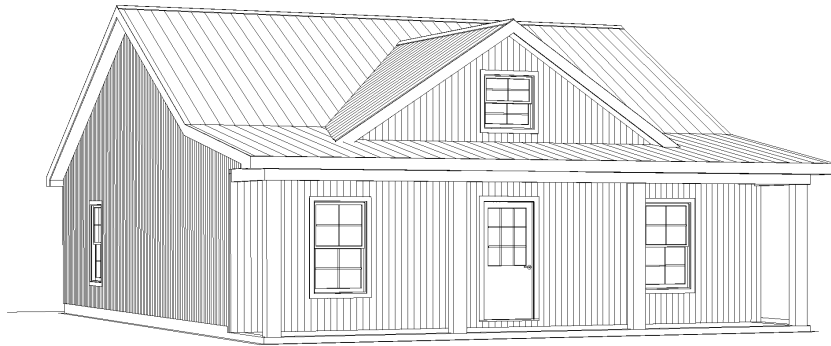
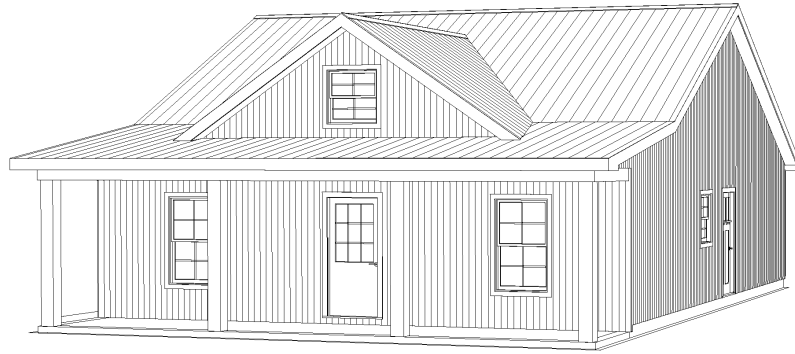
- 40X32X8 BASIC SHELL
- PORCH AS SHOWN
- 2 - 3' HOUSE DOOR
- 4 - 3x5 VINYL WINDOWS
- 1 - 3X3 VINYL WINDOW
- 1 - 2'8"X3 VINYL WINDOW
- TRUSSES AT 2' ON CENTER
- STUDS AT 16" ON CENTER
- HOUSE WRAP
- 143' OF INTERIOR FRAMING
- SOFFIT AND FASCIA OVERHANG ON ROOF
- 40 YR WARRANTY 29 GAUGE METAL - 20 COLORS AVAILABLE

➤ *UPGRADE TO OSB & PREMIUM BOARD & BATT METAL SIDING AVAILABLE*

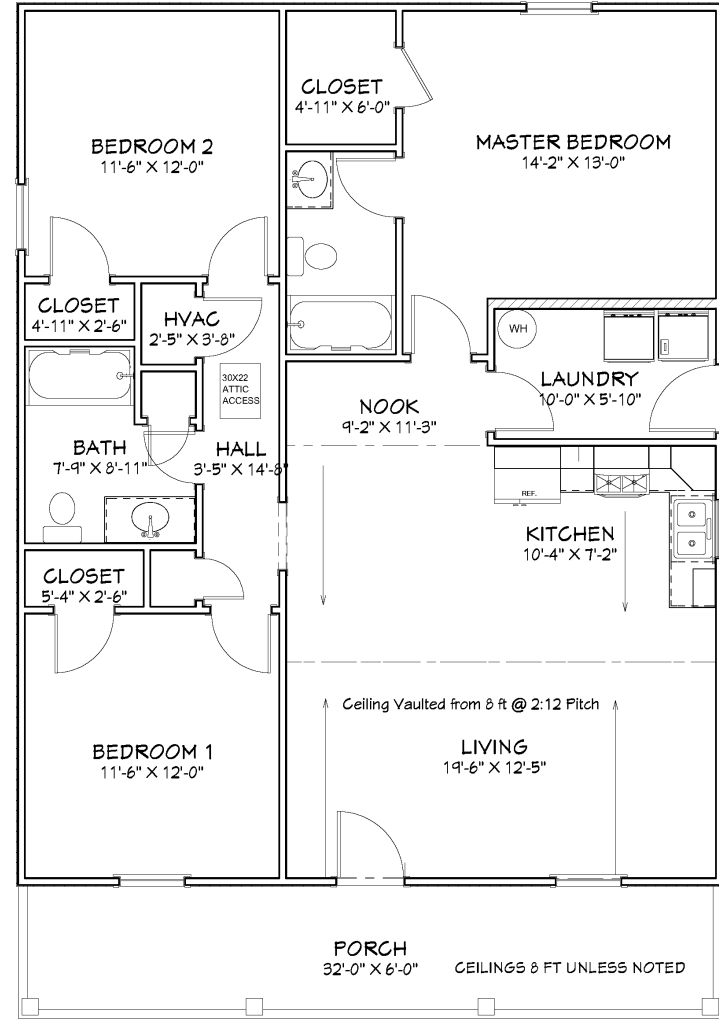
WE DELIVER UP TO 5 HOURS FROM POCAHONTAS, ARKANSAS.

*PLUS TAX & DELIVERY

ADDITIONAL FEES AND SURCHARGES MAY APPLY. PRICES ARE SUBJECT TO CHANGE WITHOUT NOTICE.

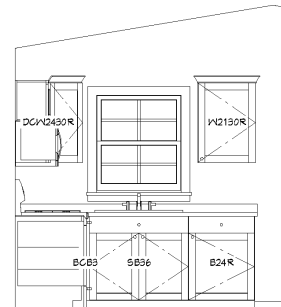
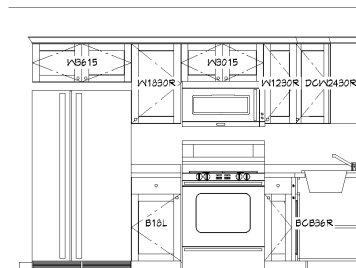
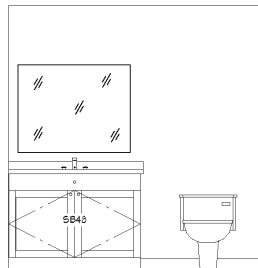
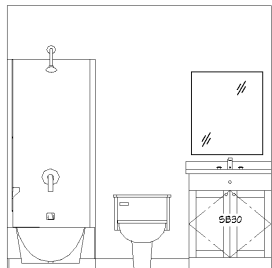


Living Area	1280 sf
Porch	192 sf
Total Under Roof	1472 sf



Floor Plan

Scale: 1/4"=1'



CABINET SCHEDULE						
LABEL	QTY	WIDTH	DEPTH	HEIGHT	DESCRIPTION	
B18L	1	18"	24"	36"	BASE CABINET	
BCB3	1	9"	24"	36"	BASE CABINET FILLER	
BCB36R	1	36"	24"	36"	BASE CABINET	
DCWC430R	1	24"	24"	30"	CORNER WALL CABINET	
SB30	1	30"	24"	36"	BASE CABINET	
SB36	1	36"	24"	36"	BASE CABINET	
WB1230R	1	12"	30"	30"	WALL CABINET	
WB130R	1	21"	30"	30"	WALL CABINET	
WB015	1	30"	12"	15"	WALL CABINET	
WB615	1	36"	12"	15"	WALL CABINET	
WB1830R	1	18"	30"	30"	WALL CABINET	
SB43	1	43"	24"	36"	BASE CABINET	
B24R	1	24"	24"	36"	BASE CABINET	

Master Bath
Scale: 3/8"=1'

Hall Bath
Scale: 3/8"=1'

Kitchen
Scale: 3/8"=1'

Kitchen
Scale: 3/8"=1'