

BUILD IT YOURSELF KIT #23

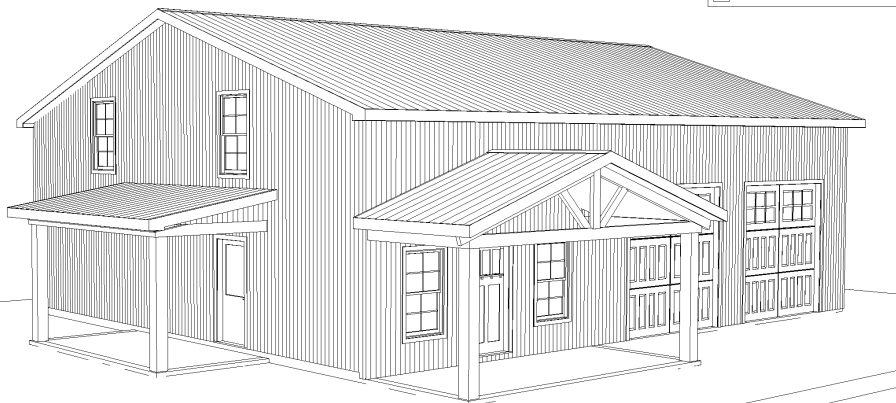
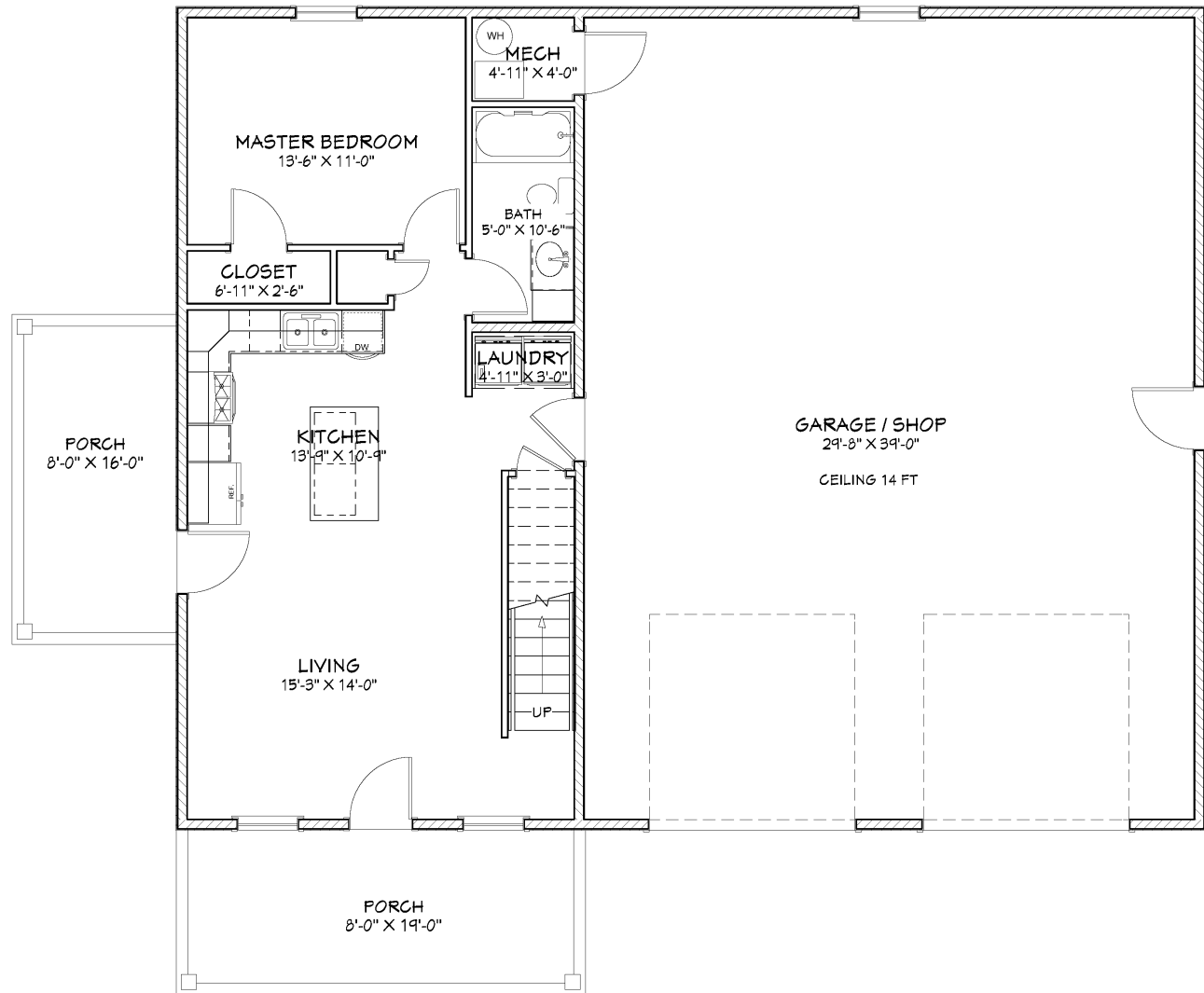
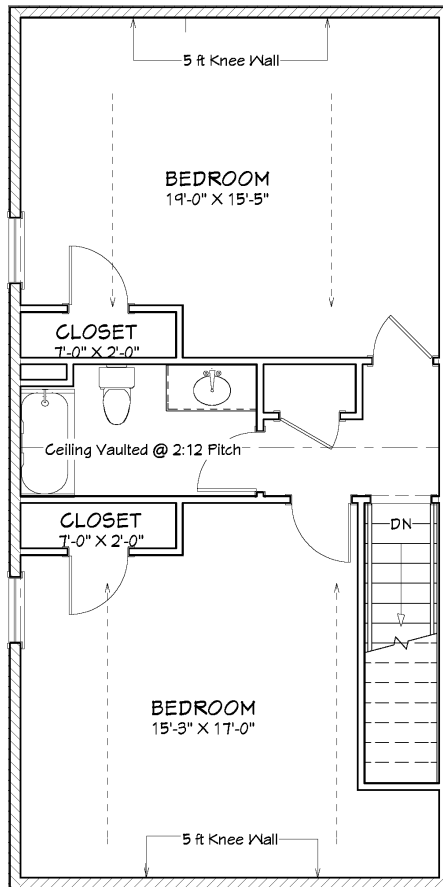
- 40X50X14 BASIC SHELL
- PORCHES AS SHOWN
- 3 - 3' HOUSE DOORS
- 2 - 10X10 GARAGE DOOR OPENINGS (DOORS NOT INCLUDED)
- 6 - 3X5 VINYL WINDOWS
- TRUSSES AT 2' ON CENTER ON HOUSE SECTION
- TRUSSES AT 4' ON CENTER ON SHOP SECTION
- STUDS AT 16" ON CENTER ON HOUSE SECTION
- STUDS AT 24" ON CENTER ON SHOP SECTION
- HOUSE WRAP
- 198' OF INTERIOR FRAMING
- SOFFIT AND FASCIA OVERHANG ON ROOF
- 40 YR WARRANTY 29 GAUGE METAL - 20 COLORS AVAILABLE

➤ *UPGRADE TO OSB & PREMIUM BOARD & BATT METAL SIDING AVAILABLE*

WE DELIVER UP TO 5 HOURS FROM POCAHONTAS, ARKANSAS.

*PLUS TAX & DELIVERY

ADDITIONAL FEES AND SURCHARGES MAY APPLY. PRICES ARE SUBJECT TO CHANGE WITHOUT NOTICE.



Living Area- 1st Floor	792sf
Living Area- 2nd Floor	744 sf
Porches	280 sf
Garage / Shop	1208 sf
Total Slab Sq Ft	2280 sf

Floor Plan
Elevations
Dimensions
2nd Floor
Roof
Mechanical
Electrical

Page A1
Page A2
Page A3
Page A4
Page A5
Page A6
Page A7

PLAN VIEW

PROJECT DESCRIPTION:
OVERMAN BUILDINGS
Plan #23

DRAWINGS PROVIDED BY:
Overman Buildings
1100 Pace Rd.
Pocahontas, AR 72455
870-609-1900

DATE:
2/17/2023

SCALE:
1/4"=1'

Scale @ 1/8"=24"

SHEET:

A-1