

BUILD IT YOURSELF KIT #21

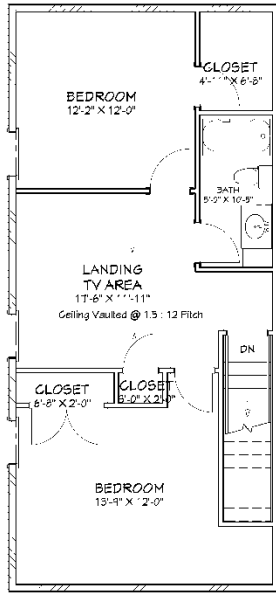
- 40X60X16 BASIC SHELL
- PORCHES AS SHOWN
- 3 - 3' HOUSE DOORS
- 3 - 10X10 GARAGE DOOR OPENINGS (DOORS NOT INCLUDED)
- 8 - 3X5 VINYL WINDOWS
- 1 – 3X3 VINYL WINDOW
- TRUSSES AT 2' ON CENTER ON HOUSE SECTION
- TRUSSES AT 4' ON CENTER ON SHOP SECTION
- STUDS AT 16" ON CENTER ON HOUSE SECTION
- STUDS AT 24" ON CENTER ON SHOP SECTION
- HOUSE WRAP
- 178' OF INTERIOR FRAMING
- SOFFIT AND FASCIA OVERHANG ON ROOF
- 40 YR WARRANTY 29 GAUGE METAL - 20 COLORS AVAILABLE

➤ *UPGRADE TO OSB & PREMIUM BOARD & BATT METAL SIDING AVAILABLE*

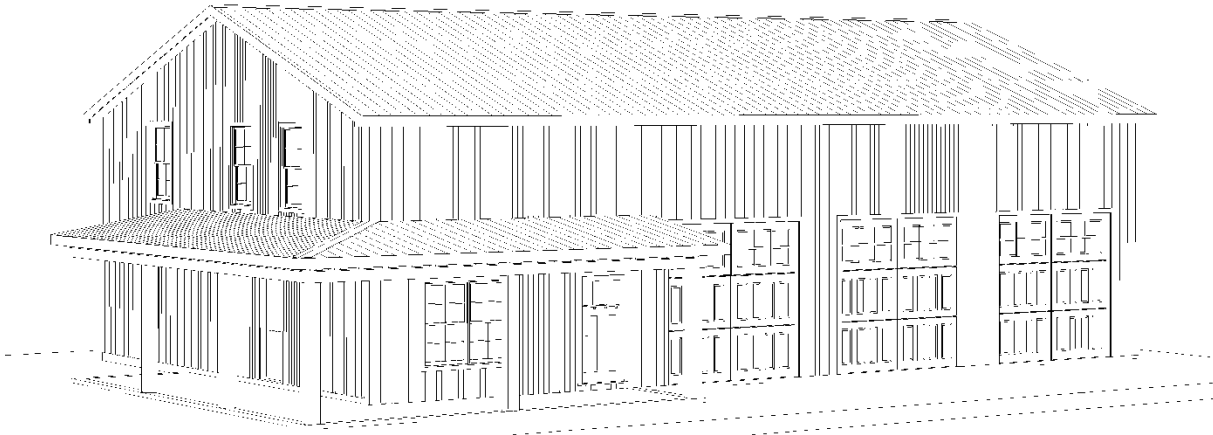
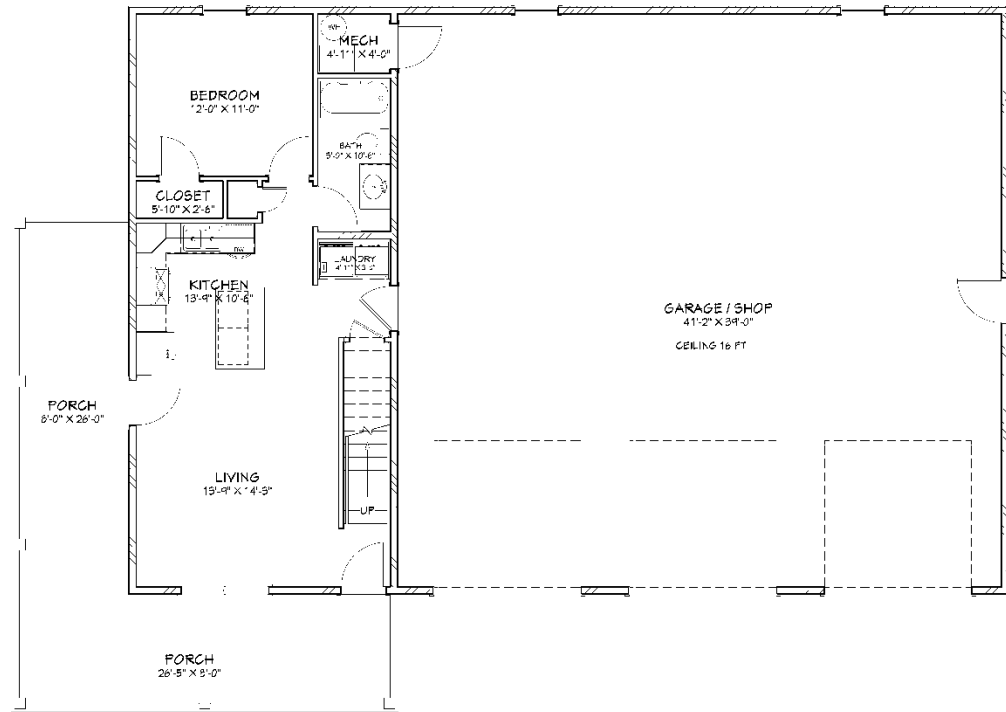
WE DELIVER UP TO 5 HOURS FROM POCAHONTAS, ARKANSAS.

*PLUS TAX & DELIVERY

ADDITIONAL FEES AND SURCHARGES MAY APPLY. PRICES ARE SUBJECT TO CHANGE WITHOUT NOTICE.



2nd Floor



Living Area- 1st Floor	732 sf
Living Area- 2nd Floor	683 sf
Porches	420 sf
Garage / Shop	1668 sf
Total Slab Sq Ft	2820 sf

Page A1 Floor Plan
 Page A2 Elevations
 Page A3 Dimensions
 Page A4 Foundations
 Page A5 Electrical

PLAN VIEW

OVERMAN BUILDINGS
Plan #21

PROJECT DESCRIPTION:

DRAWINGS PROVIDED BY:
Overman Buildings
 1100 Park Rd.
 Prochaires, AR 72455
 870-609-1900

DATE:

1/16/2023

SCALE:

1/4"=1'

Scale @ 2'-x-26'

SHEET:

A-1