

BUILD IT YOURSELF KIT #20

- 41'6X40X8 BASIC SHELL
- PORCH AS SHOWN
- 2 - 3' HOUSE DOORS
- 16X7 GARAGE DOOR OPENING (DOOR NOT INCLUDED)
- 1 - 6X5 VINYL WINDOWS
- 7 - 3X5 VINYL WINDOWS
- 1 – 3X3 VINYL WINDOW
- TRUSSES AT 2' ON CENTER
- STUDS AT 16" ON CENTER
- HOUSE WRAP
- 207' OF INTERIOR FRAMING
- SOFFIT AND FASCIA OVERHANG ON ROOF
- 40 YR WARRANTY 29 GAUGE METAL - 20 COLORS AVAILABLE

➤ *UPGRADE TO OSB & PREMIUM BOARD & BATT METAL SIDING AVAILABLE*

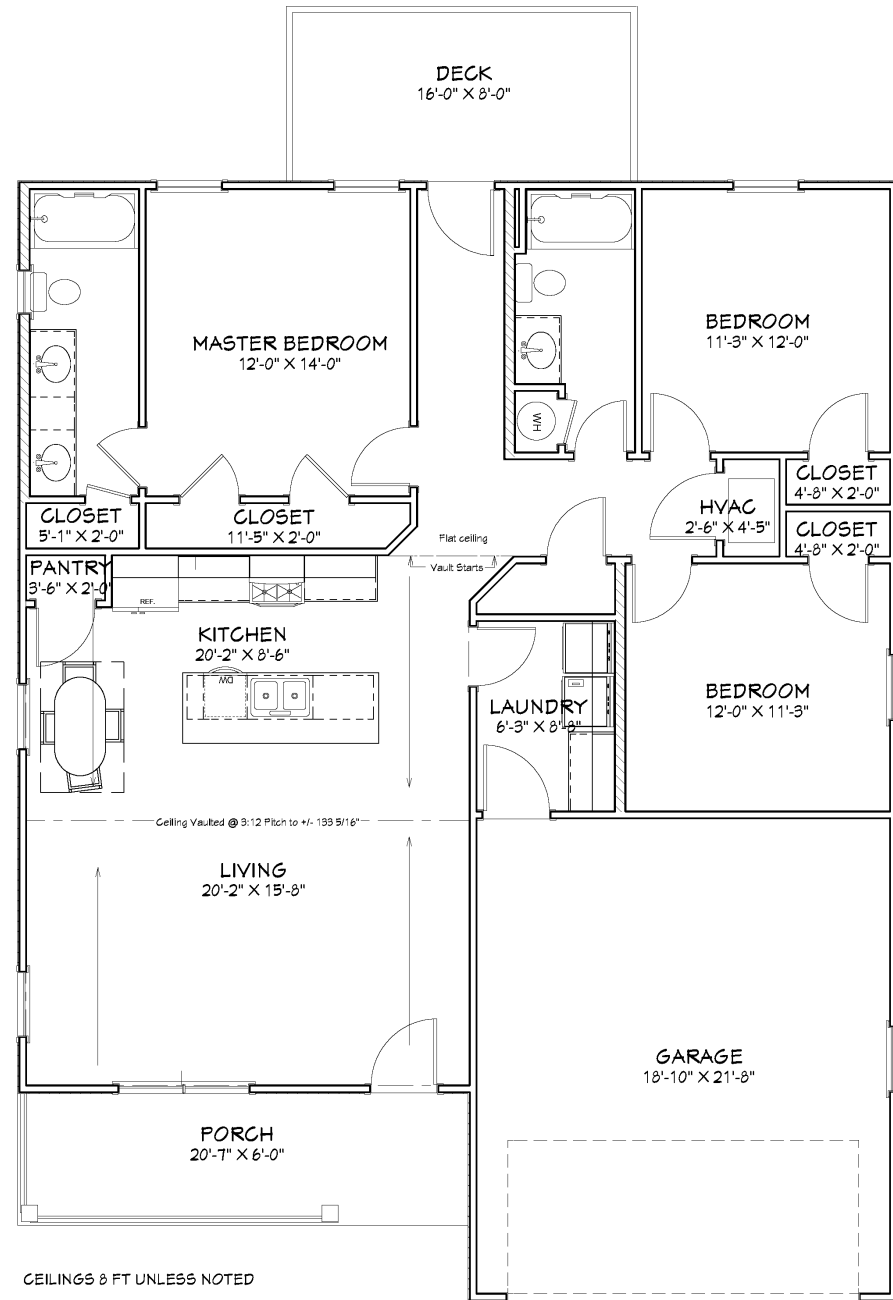
WE DELIVER UP TO 5 HOURS FROM POCAHONTAS, ARKANSAS.

*PLUS TAX & DELIVERY

ADDITIONAL FEES AND SURCHARGES MAY APPLY. PRICES ARE SUBJECT TO CHANGE WITHOUT NOTICE.



Living Area	1420 sf
Garage	424 sf
Porch	126 sf
Total Slab	1970 sf



CEILINGS 8 FT UNLESS NOTED

Floor Plan
Elevations
Dimensions
Roof
Foundation
Electrical

Page A1
Page A2
Page A3
Page A4
Page A5
Page A6

SHEET TITLE:
PLAN VIEW

PROJECT DESCRIPTION:
**Overman Plan # 2021-20
Thomasville**

DRAWINGS PROVIDED BY:
Overman Buildings
1000 W. Main St., Suite 72455
Thomasville, GA 30784
878-909-1500

DATE:
7/9/2021

SCALE:
Scale @ 18"x24"
1/4" = 1'

SHEET:
A-1