

BUILD IT YOURSELF KIT #15B

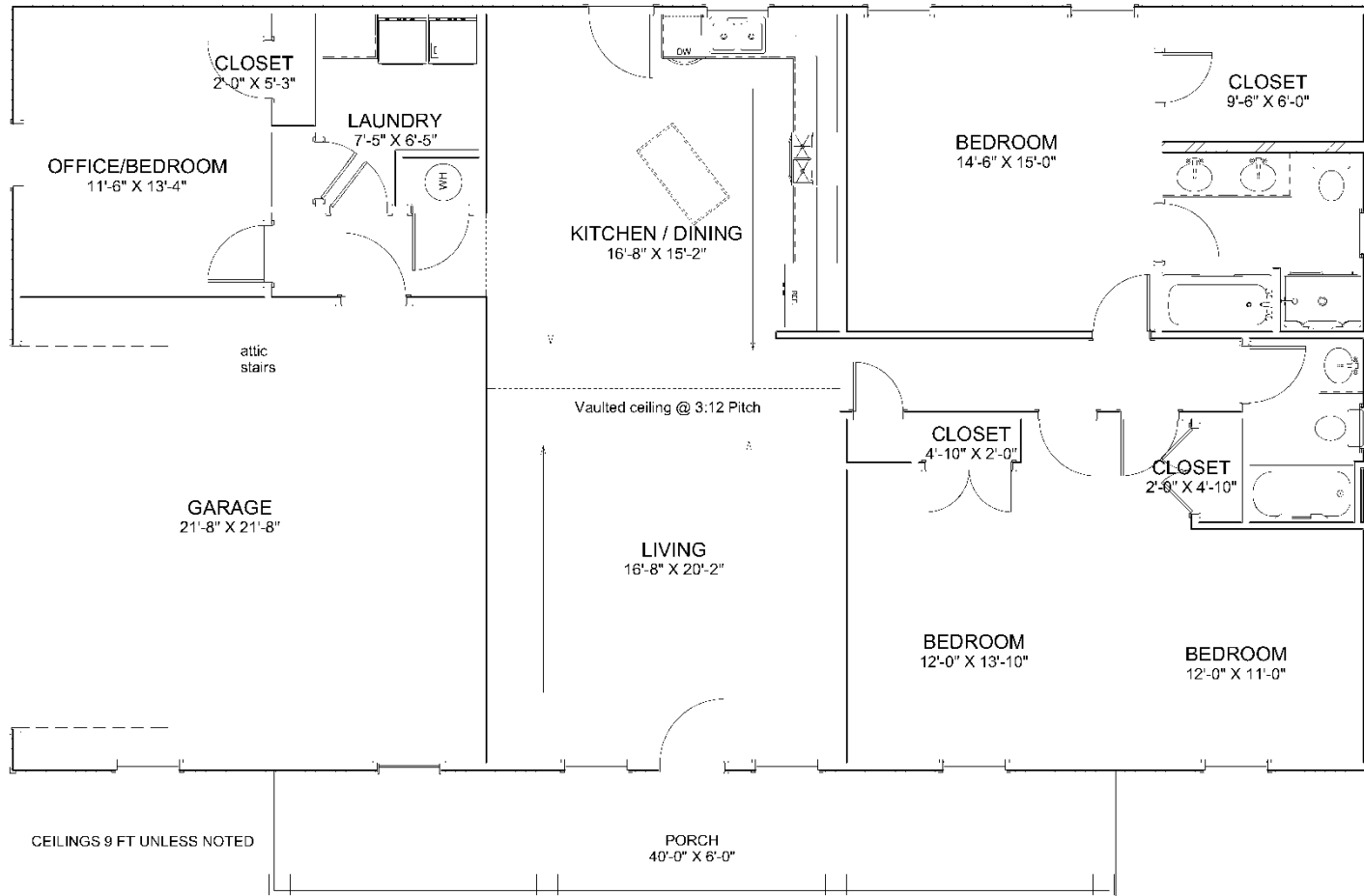
- 36X64x9 BASIC SHELL
- PORCH AS SHOWN
- 18X7 GARAGE DOOR OPENING (DOOR NOT INCLUDED)
- 3 - 3' HOUSE DOORS
- 9 - 3X5 VINYL WINDOWS
- 1 - 3X3 VINYL WINDOW
- 2 - 2x3 VINYL WINDOWS
- TRUSSES AT 2' ON CENTER
- STUDS AT 16" ON CENTER
- HOUSE WRAP
- 282' OF INTERIOR FRAMING
- SOFFIT AND FASCIA OVERHANG ON ROOF
- 40 YR WARRANTY 29 GAUGE METAL - 20 COLORS AVAILABLE

➤ *UPGRADE TO OSB & PREMIUM BOARD & BATT METAL SIDING AVAILABLE*

WE DELIVER UP TO 5 HOURS FROM POCAHONTAS, ARKANSAS.

*PLUS TAX & DELIVERY

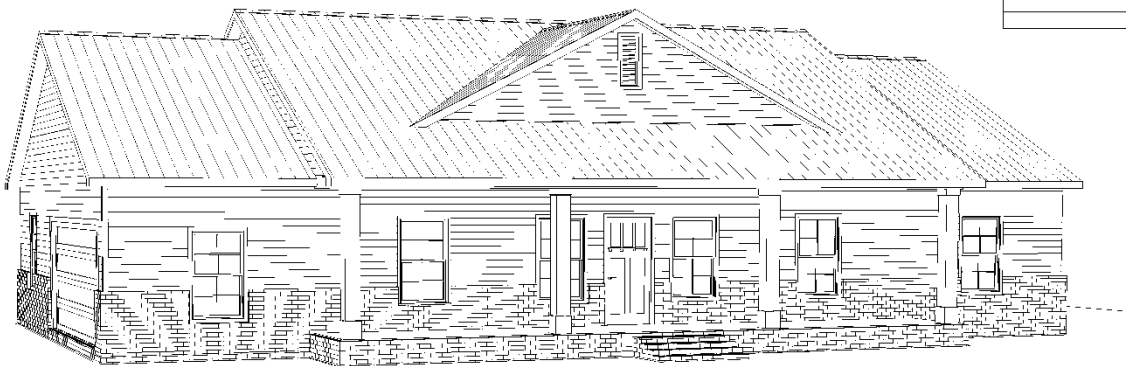
ADDITIONAL FEES AND SURCHARGES MAY APPLY. PRICES ARE SUBJECT TO CHANGE WITHOUT NOTICE.



CEILINGS 9 FT UNLESS NOTED

Vaulted ceiling @ 3:12 Pitch

PORCH
40'-0" X 6'-0"



Living Area	1820 sf
Porch	240 sf
Garage	484 sf

Floor Plan
 Elevations
 Closets
 Roof
 Foundation
 Electrical

Page A1
 Page A2
 Page A3
 Page A4
 Page A5
 Page A6

SHEET TITLE:
 PLAN VIEW

PROJECT DESCRIPTION:
 Overman Plan #2019-15B
 Porch w/Gable & Garage

DRAWINGS PROVIDED BY:
 Overman Buildings
 1000 W. 10th St., AR 72425
 970-694-1500

DATE:
 2/9/2021
 SCALE:
 1/4" = 1'
 SHEET:

A-1