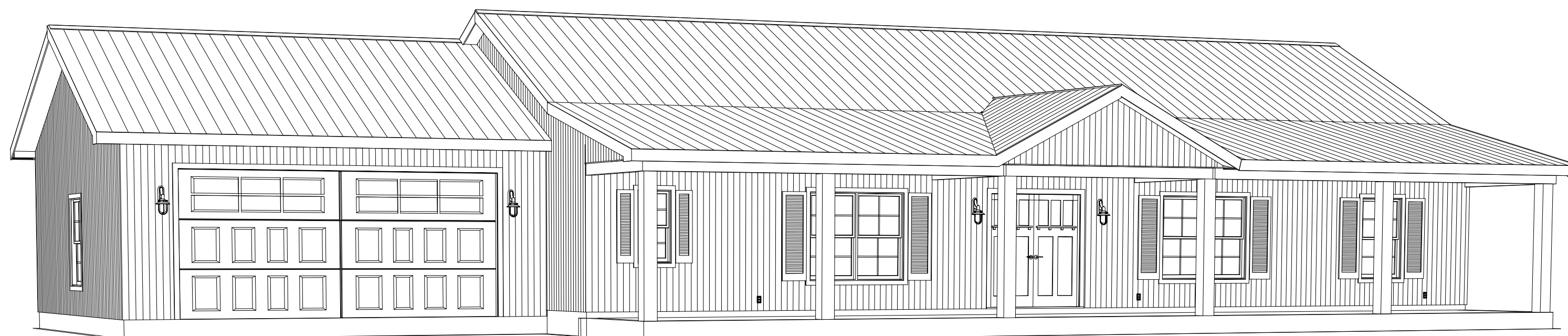


CEILING 9 FT UNLESS NOTED



Living Area	1800 sf
Porch	480 sf
Garage	576 sf
<b>Total Under Roof</b>	<b>2856 sf</b>

DATE: 4/3/2023	SHEET: <b>A-1</b>	SCALE: 1/4"=1' Scale @ 1/8"x24"	DRAWINGS PROVIDED BY: <b>Overman Buildings</b> 1100 Pace Rd. Pocahontas, AR 72455 870-609-1900	CLIENT: <b>OVERMAN BUILDINGS</b> Plan #40 Front Entry Garage	<b>PLAN VIEW</b>	Page A1 Floor Plan Page A2 Elevations Page A3 Dimensions Page A4 Roof Page A5 Foundation Page A6 Electrical Page A7 Cabinetry
-------------------	----------------------	---------------------------------------	--	---	------------------	---

## **BUILD IT YOURSELF KIT #40B**

BASIC SHELL PRICE: \$37,150\*

- 30X60X9 BASIC SHELL
- PORCHES AS SHOWN
- 1 - 3' HOUSE DOOR
- 2 - 6' DOUBLE DOORS
- 4 - 3X5 VINYL WINDOWS
- 1 - 3X3 VINYL WINDOW
- 1 - 2X3 VINYL WINDOW
- 2 - 6X5 VINYL WINDOWS
- TRUSSES AT 2' ON CENTER ON HOUSE
- TRUSSES AT 4' ON CENTER ON GARAGE
- STUDS AT 16" ON CENTER ON HOUSE
- STUDS AT 24" ON CENTER ON GARAGE
- HOUSE WRAP
- 245' OF INTERIOR FRAMING
- SOFFIT AND FASCIA OVERHANG ON ROOF
- 40 YR WARRANTY 29 GAUGE METAL - 20 COLORS AVAILABLE
- 18'X7' GARAGE DOOR OPENING

ADD \$8,575.00 TO UPGRADE TO OSB & PREMIUM BOARD & BATTEN METAL SIDING

WE DELIVER UP TO 5 HOURS FROM POCAHONTAS, ARKANSAS.

\*PLUS TAX & DELIVERY

ADDITIONAL FEES AND SURCHARGES MAY APPLY. PRICES ARE SUBJECT TO CHANGE WITHOUT NOTICE.