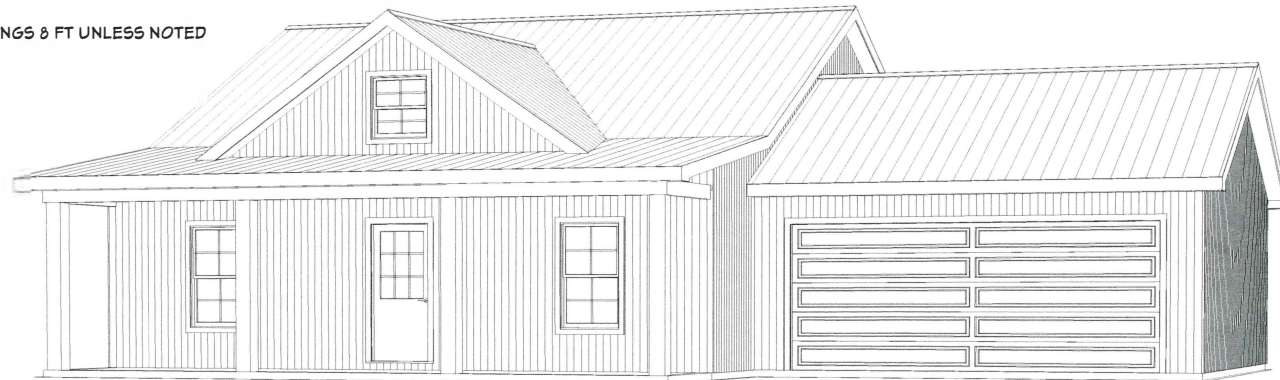


CEILINGS 8 FT UNLESS NOTED



Living Area	1280 sf
Porch	192 sf
Garage	498 sf
Total Under Roof	1970 sf

Elec Plan
 Elevations
 Dimensions
 Roof
 Foundation
 Electrical

Page A1
 Page A2
 Page A3
 Page A4
 Page A5
 Page A6

SHEET TITLE:
 PLAN VIEW

PROJECT DESCRIPTION:
 Overman Plan #46

DRAWINGS PROVIDED BY:
 Overman Buildings
 1100 Hwy. 64
 Pochman, AR 72455
 870-609-1900

DATE:
 7/26/2023

SCALE:
 Scale @ 1/8"=24"
 1/4" = 1'

SHEET:
 A-1

BUILD IT YOURSELF KIT #46

BASIC SHELL PRICE: \$25,600*

- 40X32X8 BASIC SHELL
- 21'7"x22" GARAGE
- PORCH AS SHOWN
- 2 - 3' HOUSE DOORS
- 4 - 3X5 VINYL WINDOWS
- 1 - 3X3 VINYL WINDOW
- TRUSSES AT 2' ON CENTER
- STUDS AT 16" ON CENTER ON HOUSE PART
- STUDS AT 24" ON CENTER ON SHOP PART
- HOUSE WRAP
- 143' OF INTERIOR FRAMING
- SOFFIT AND FASCIA OVERHANG ON ROOF
- 18X7 Garage Door Opening

- 40 YR WARRANTY 29 GAUGE METAL - 20 COLORS AVAILABLE

ADD \$5,900.00 TO UPGRADE TO OSB & PREMIUM BOARD & BATTEN METAL
SIDING

WE DELIVER UP TO 5 HOURS FROM POCAHONTAS, ARKANSAS.

*PLUS TAX & DELIVERY

ADDITIONAL FEES AND SURCHARGES MAY APPLY. PRICES ARE SUBJECT TO CHANGE WITHOUT NOTICE.