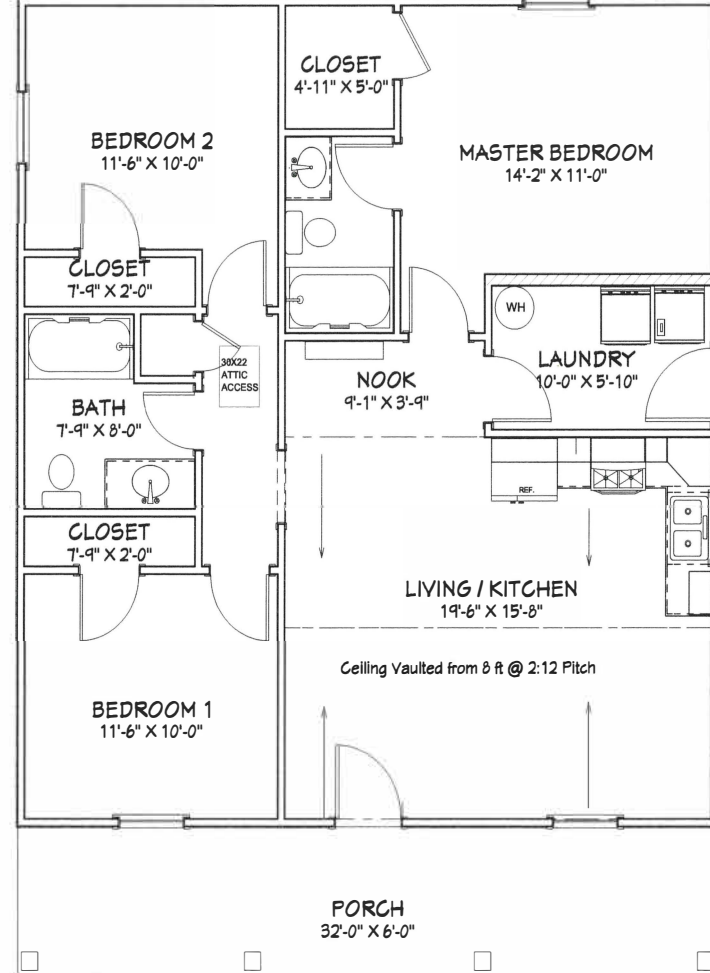


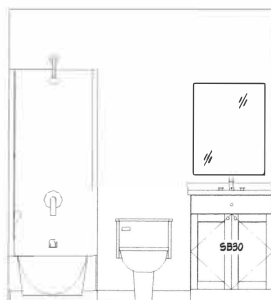
Living Area	1088 sf
Porch	192 sf
Total Under Roof	1280 sf



CEILINGS 8 FT UNLESS NOTED

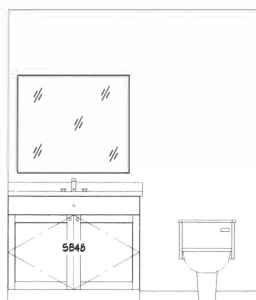
Floor Plan

Scale: 1/4"=1'



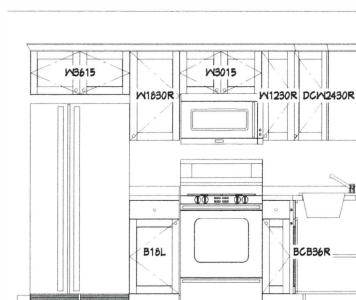
Master Bath

Scale: 3/8"=1'



Hall Bath

Scale: 3/8"=1'



Kitchen

Scale: 3/8"=1'



Kitchen

Scale: 3/8"=1'

CABINET SCHEDULE					
LABEL	QTY	WIDTH	DEPTH	HEIGHT	DESCRIPTION
B18L	1	18"	24"	36"	BASE CABINET
BCB3	1	3"	24"	36"	BASE CABINET FILLER
BCB36R	1	36"	24"	36"	BASE CABINET
DCW2430R	1	24"	24"	30"	CORNER WALL CABINET
SB30	1	30"	24"	36"	BASE CABINET
SB36	1	36"	24"	36"	BASE CABINET
W1230R	1	12"	12"	30"	WALL CABINET
W2130R	1	21"	12"	30"	WALL CABINET
W3015	1	30"	12"	15"	WALL CABINET
W3615	1	36"	12"	15"	WALL CABINET
W1830R	1	18"	12"	30"	WALL CABINET
SB48	1	48"	24"	36"	BASE CABINET
B24R	1	24"	24"	36"	BASE CABINET

Floor Plan
Elevations
Dimensions
Page A1
Page A2
Page A3
Page A4

PLAN VIEW

SHEET TITLE:

PROJECT DESCRIPTION:

Overman Plan #44

DRAWINGS PROVIDED BY:

Overman Buildings
1100 Rice Rd.
Pocahontas, AR 72455
870-605-1900

DATE:

7/27/2023

SCALE:

Scale @ 1/8"=24"

As Shown

SHEET:

A-1

BUILD IT YOURSELF KIT #44

BASIC SHELL PRICE: \$16,650.00*

- 34X32X8 BASIC SHELL
- PORCH AS SHOWN
- 2 - 3' HOUSE DOORS
- 4 - 3X5 VINYL WINDOWS
- 1 - 3X3 VINYL WINDOW
- 1 - 2'8"X3' VINYL WINDOW
- TRUSSES AT 2' ON CENTER
- STUDS AT 16" ON CENTER
- HOUSE WRAP
- 136' OF INTERIOR FRAMING
- SOFFIT AND FASCIA OVERHANG ON ROOF
- 40 YR WARRANTY 29 GAUGE METAL - 20 COLORS AVAILABLE

ADD \$3,850 TO UPGRADE TO OSB & PREMIUM BOARD & BATTEN METAL SIDING

WE DELIVER UP TO 5 HOURS FROM POCAHONTAS, ARKANSAS.

*PLUS TAX & DELIVERY

ADDITIONAL FEES AND SURCHARGES MAY APPLY. PRICES ARE SUBJECT TO CHANGE WITHOUT NOTICE.