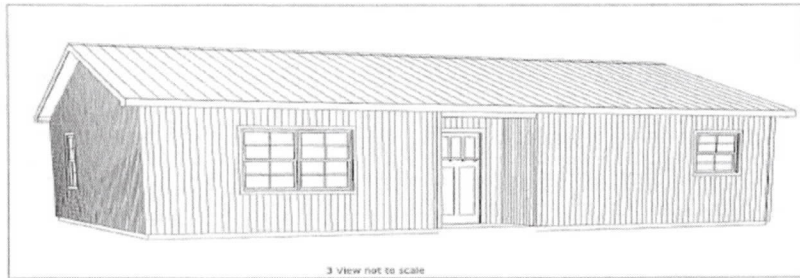
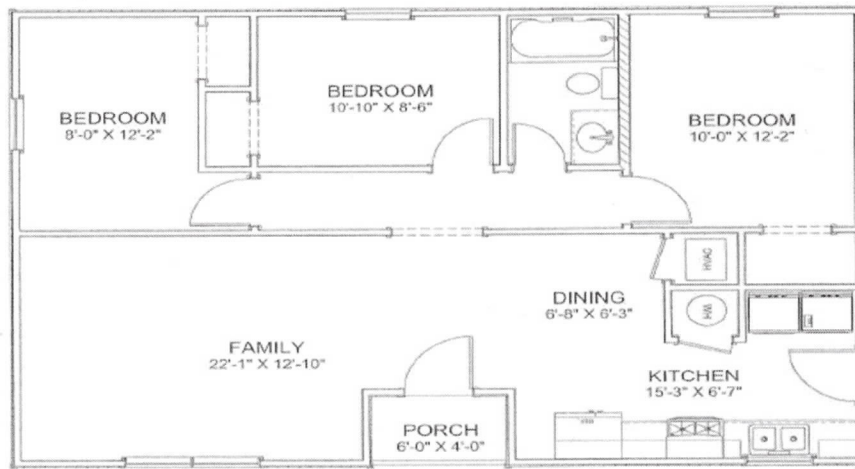


HOUSE KIT # 19/ 988 SQ. FT



ALL CEILINGS 8 FT

Living Area	964 sf
Porch	24 sf
Total Under Roof	988 sf

OVERMAN BUILDINGS
 OVERMAN BUILDINGS
 HOUSE PLAN # 2021-19
 DATE: 3/16/2021
 SCALE: 3/8" = 1'
 SHEET: A-1

BUILD IT YOURSELF KIT

BASIC SHELL PRICE **\$15,315.00 ***

ADD **\$3740.00** MORE TO UPGRADE TO OSB AND PREMIUM HORIZONTAL METAL SIDING

*PLUS TAX AND DELIVERY

WE CAN DELIVER UP TO 5 HOURS FROM POCAHONTAS ARKANSAS

ADDITIONAL FEES AND SURCHARGES MAY APPLY
 PRICES ARE SUBJECT TO CHANGE WITHOUT NOTICE

24X38X8 SHELL

13X4 INDENT PORCH WITH SOFFIT

2 — 3' HOUSE DOORS

5 — 3X4 VINYL WINDOWS

1 — 3X3 VINYL WINDOWS

TRUSSES AT 2' ON CENTER

STUDS AT 16" ON CENTER

HOUSE WRAP

127' OF INTERIOR FRAMING

SOFFIT AND FASCIA OVERHANG ON ROOF

40YR WARRANTY 29 GAUGE METAL — 16 COLORS TO CHOOSE FROM