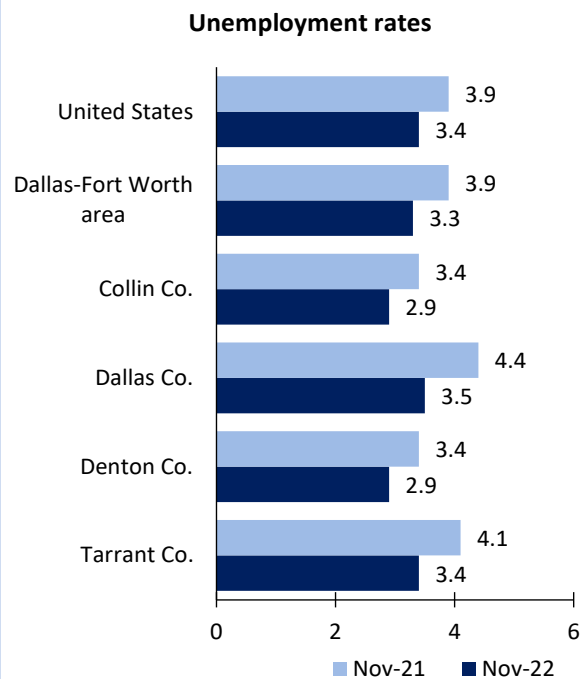


# Dallas-Fort Worth Area Economic Summary

Updated January 05, 2023

This summary presents a sampling of economic information for the area; supplemental data are provided for regions and the nation. Subjects include **unemployment, employment, wages, prices, spending, and benefits**. All data are not seasonally adjusted and some may be subject to revision. Area definitions may differ by subject. For more area summaries and geographic definitions, see [www.bls.gov/regions/economic-summaries.htm](http://www.bls.gov/regions/economic-summaries.htm).

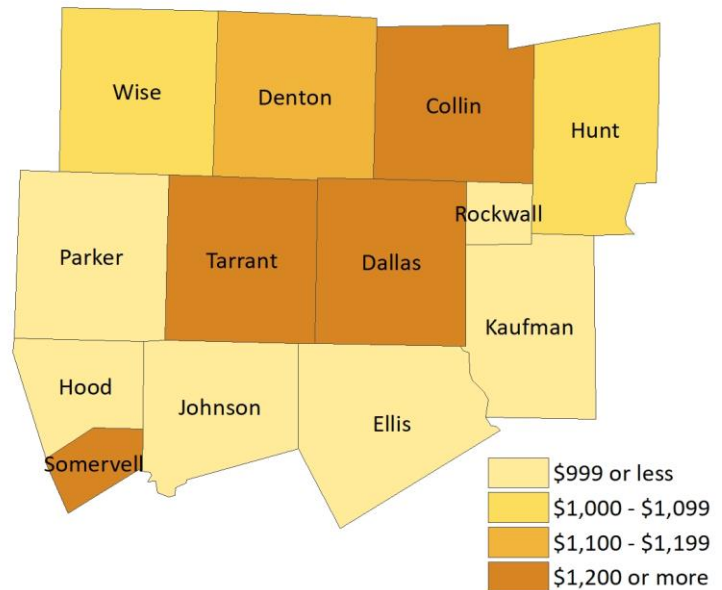
## Unemployment rates for the nation and selected areas



## Average weekly wages for all industries by county

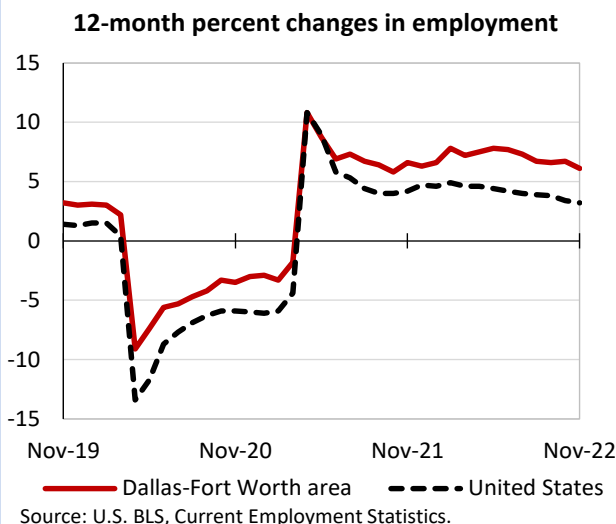
Dallas-Fort Worth area, second quarter 2022

(U.S. = \$1,294; Area = \$1,386)



Source: U.S. BLS, Quarterly Census of Employment and Wages.

## Over-the-year changes in employment on nonfarm payrolls and employment by major industry sector



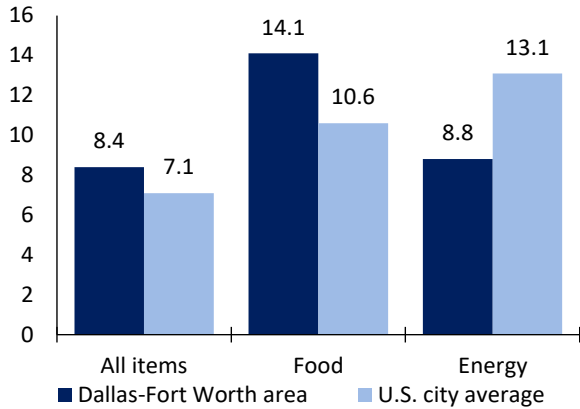
Dallas-Fort Worth area employment (number in thousands)	Nov. 2022	Change from Nov. 2021 to Nov. 2022	
		Number	Percent
Total nonfarm	4,234.6	242.2	6.1
Mining, logging, and construction	238.1	18.0	8.2
Manufacturing	306.0	18.1	6.3
Trade, transportation, and utilities	921.8	33.1	3.7
Information	87.7	3.1	3.7
Financial activities	372.3	21.8	6.2
Professional and business services	777.0	51.7	7.1
Education and health services	505.6	34.3	7.3
Leisure and hospitality	431.6	47.9	12.5
Other services	136.0	9.4	7.4
Government	458.5	4.8	1.1

Source: U.S. BLS, Current Employment Statistics.



Over-the-year change in the prices paid by urban consumers for selected categories

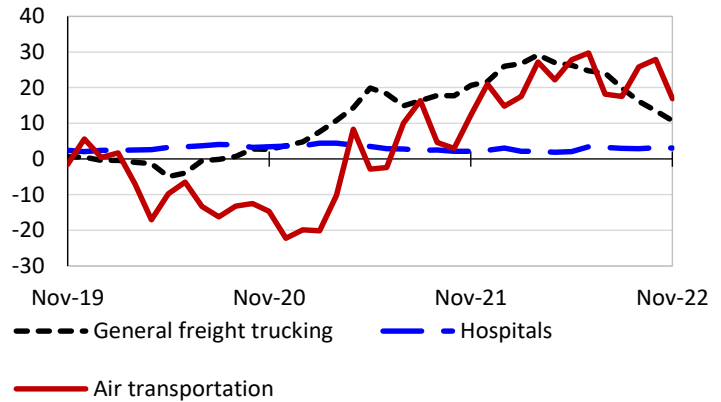
12-month percent change in CPI-U, November 2022



Source: U.S. BLS, Consumer Price Index.

Over-the-year changes in the selling prices received by producers for selected industries nationwide

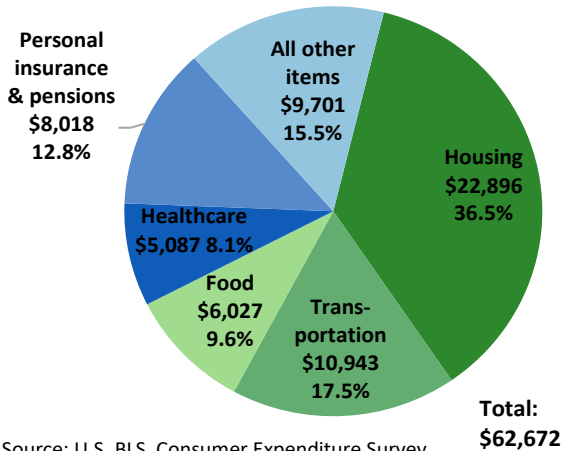
12-month percent changes in PPI



Source: U.S. BLS, Producer Price Index.

Average annual spending and percent distribution for selected categories

Dallas area average annual expenditures, 2020-21



Source: U.S. BLS, Consumer Expenditure Survey.

Average hourly wages for selected occupations

Occupation	Dallas-Fort Worth area	United States
All occupations	\$27.89	\$28.01
Human resources managers	66.77	65.67
Accountants and auditors	42.17	40.37
Registered nurses	39.55	39.78
Construction laborers	17.83	21.22
Retail salespersons	14.95	15.35
Cooks, fast food	11.82	12.25

Source: U.S. BLS, Occupational Employment and Wage Statistics, May 2021.

Employer costs per hour worked for wages and selected employee benefits by geographic division

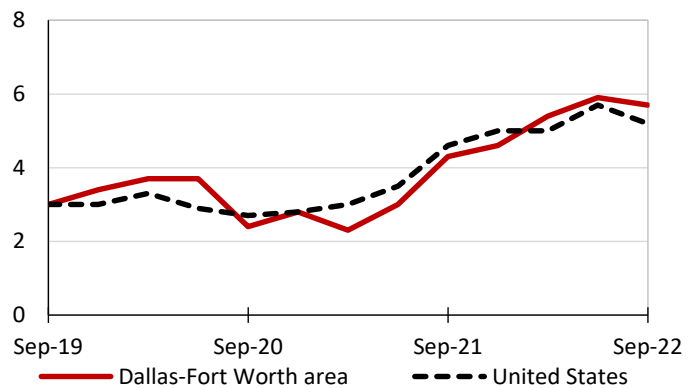
Private industry, September 2022	West South Central (1)	United States
Total compensation	\$35.15	\$39.61
Wages and salaries	25.61	27.93
Total benefits	9.54	11.68
Paid leave	2.45	2.94
Vacation	1.25	1.51
Supplemental pay	1.37	1.41
Insurance	2.22	3.00
Retirement and savings	0.99	1.35
Legally required benefits	2.52	2.98

(1) The states that compose the West South Central census division are: AR, LA, OK, and TX.

Source: U.S. BLS, Employer Costs for Employee Compensation.

Over-the-year changes in wages and salaries

12-month percent changes in ECI



Source: U.S. BLS, Employment Cost Index.