



# The Shepherd's Voice

FEBRUARY 2026

439 E. Norvell Bryant Hwy, Hernando, FL 34442

Our  
Interim  
Pastor



## Pastor's Devotion

**Dear Members and Friends of Good Shepherd,**

Many years ago two men were on board a sailing ship, going back to their home on a far-off Pacific island, when one of them noticed a little grain of corn at his feet. He picked it up and examined it. "It's a grain of corn," he said. "If it were a sackful it might be of some use!" And he threw it away again carelessly. But the other man picked it up, put it in his pocket and treasured it until they reached their island home. Then he sowed it. It grew into a plant, and yielded a tiny crop, so small as to be laughable. But he planted that in turn, and the next time the result was enough to give a few grains to each of his many friends. So the crop grew, and in the end it yielded an abundant harvest. The little seed was the means of introducing corn to the Pacific islands. When the seed of faith first comes into our lives with its love and power and we feel its great energy, we treat it with great reverence. As time goes by, however, we may begin to take it for granted. We can get lazy, tired, and careless. When that begins to happen, we are in danger of sliding into lukewarmness. **Lent is a call for renewal and endurance in our faith as we re-commit to pick up the cross and follow Christ.**

----- Picking----- up the cross and following Christ, we recall the love Jesus shared and the tremendous price that he paid as he hung on a cross to save us, as homely and sinful as we are. Lent is all about this rebirth, renewal and new life that begins with our forgiveness through the cross of Christ Jesus!

In fact, St. Peter, in a beautiful hymn, reassures us about the rebirth, renewal and New life, given to us through Christ's Jesus death and resurrection which gives us the endurance to keep our faith. The hymn goes like this:

***For Christ also suffered for our sins once for all,  
the righteous one for the unrighteous,  
in order to bring us to God.  
He was put to death in the flesh,  
but made alive in the spirit,  
in which he went and made a proclamation to the spirits in prison...***

***He has gone into heaven  
and is at the right hand of God  
with angels. Authorities, and powers having been made subject to him.  
For Christ also suffered for our sins once for all,  
In order to bring us to God. (I Peter 3:18-22)***

As Lent is a call for renewal and endurance in our faith, as we recommit to pick up the cross and follow Christ. **I invite you to join us each Sunday during the Lenten Season. Also, I invite you to our Wednesday evening Lenten Worship Services that will begin at 6:30 pm in the fellowship hall except “Ash Wednesday” that will be in the Sanctuary with “the Imposition of Ashes” and Holy Communion at 6:30pm.. Due to health issues and other circumstances, there will be no Soup Suppers this year.**

**2026 Lenten Service Schedule:**

Wednesday, February 18th –**Ash Wednesday** –6:30pm (Sanctuary)  
Sunday, February 22nd –First Sunday in Lent –10:00am (Sanctuary)  
Wednesday, February 25—Midweek Service—6:30pm (Fellowship Hall)  
Sunday, March 1st –Second Sunday in Lent –10:00 am (Sanctuary)  
Wednesday, March 4th –Midweek Service –6:30 pm (Fellowship Hall)  
Sunday, March 8th -The Third Sunday in Lent—10:00 am (Sanctuary)  
Wednesday, March 11th --Midweek Service –6:30pm (Fellowship Hall)  
Sunday, March 15th --The Fourth Sunday in Lent –10:00 am (Sanctuary)  
Wednesday, March 18th --Midweek Service –6:30pm (Fellowship Hall)  
Sunday, March 22nd –Sunday Service—10:00am (Sanctuary)  
Wednesday, March 25th –Midweek Service—6:30pm (Fellowship Hall)  
Sunday, March 29th –**Palm Sunday Service** –10:00pm (Sanctuary/Procession gathers in Portico)  
Wednesday, April 1st –**No Wednesday Service**  
Thursday, April 2nd –**Holy Thursday**—6:30pm (Sanctuary)  
Friday, April 3rd –**Good Friday –Noon** – (Sanctuary)  
Sunday, April 5th –**Easter Sunday**—10:00am (Sanctuary)

***Lenten Blessings,  
Pastor Bob***

# President's Message



Over the past few weeks, I have received many comments and concerns regarding the recent changes to our worship bulletin. Prior to COVID, we used a one-page bulletin. When we reopened and sought to remain safe, we moved to a much longer bulletin so we would not need to use the hymnals. After hearing your feedback, we have now adjusted to a six-page bulletin as a better balance.

As I have mentioned before, many council members have read *I Am a Church Member* by Thom Rainer. We have ordered 20 additional copies for our library and for new members. I encourage the entire congregation to read this book. It is a very short read but very impactful. I believe it offers helpful perspective as we continue to grow together in faith and understanding. Please see Sue Fowler or John Giammasi if you would like to borrow a copy from our library.

I understand that we are in a time of transition, and change is not always easy. For those who may be unhappy, I ask that we remember why we gather each week, and that is to worship God together as a community of faith.

Grace and Peace,

Joe

# Church Council News



The Council met on January 15, 2026 and addressed the following:

- \* Completely updated copies of Constitution and By-Laws were distributed
- J. Adams and T. Stickler gave synopsis of FL Bahama Synod “Building Bridges” seminar
- \* Emily Fallanca was approved as the Youth Representative on Council
- \* Gideon presentation to occur February 1, 2026 during Worship
- \* Any additional purchasing needs to be pre-approved by Committee Chairmen and paperwork signed off on prior to purchase as well as the church credit card being used
- \* WELCA “Sock Drive” to benefit Graceway Village from Jan 18 – Feb 8, 2026
- \* Slight fee increase for CC Board of Elections use of building approved
- \* “Spring Fling Sale” scheduled for March 28, 2026 to be headed up by Renate Williams approved
- \* Pastor Yankovitz time off approved
- \* Lent worship service schedule approved
- \* New Beginning Christian Community use of building request for Saturday 2/7/26 approved
- \* Shrove Tuesday Pancake Supper February 17, 2026 sponsored by our Cub Pak 975
- \* Recent order of 285 hygiene kits to be split between GSLC and CC Education Foundation
- \* Approved Agenda for January 25, 2026 Semi – Annual Congregational Meeting approved



## WELCA NEWS

*As a community of women create in the image of God called to discipleship in Jesus Christ and empowered by the Holy Spirit, we commit ourselves to grow in faith, affirm our gifts, support one another in our callings, engage in ministry and action, and promote healing and wholeness in the church, the society and the world.*

The following are the Welca activities scheduled for the months of February and March.

February 3rd, Tuesday at Noon Bible study at church in the classroom. All materials will be provided.?

A Sock drive for Gateway village, is being conducted and collection day will be on February 12th; the collection basket is in the Narthex.

Socks need to be new and sizes from Infant to adult

Gateway Village is a Welca charity located in New Port Charlotte FL.

We appreciate your contributions.

March 7, 2026 , Pinelands Spring Gathering at Hope Lutheran Church in the villages ?

March 17 Lunch noon Cattle dog in Hernando , FL

All sign up in Lobby with full address's for events

Thank you

**Aagot Green and Cindy Gaertner Co- Directors**



## Outreach / Vision to Action

Our congregation continues to deepen its commitment to meaningful outreach as we look toward the year ahead. February invites us to reflect on how we live out Christ's call to love our neighbors in tangible, everyday ways. From food support and community partnerships to listening closely to the needs around us, our outreach ministry remains focused on building relationships that honor dignity, foster trust, and strengthen the fabric of our wider community. This work is not a program but a posture — a year-round expression of who we are as a church.

We are also thrilled to share that our congregation has been awarded a **\$10,000 Vision to Action** grant from the Florida-Bahamas Synod in support of our new initiative, ***Building Bridges to the Local Latino Community***. This grant empowers us to expand our presence, deepen cultural connections, and create welcoming spaces where Latino neighbors feel seen, valued, and invited into partnership. Over the coming months, we will begin shaping this ministry with intention and humility, seeking guidance from community voices as we discern the most meaningful next steps. God is opening a new door for us, and we step forward with gratitude and hope.

If you want to be involved contact Tom Stickler or join our Outreach Committee and volunteer your time and talents.

## Fellowship



Our Fellowship Committee meeting will be held on Monday, February 9, 2026, at 1:30 PM.

We are asking our committee members to attend if their schedule allows.

If you would like to help with serving coffee, tea, or with cleaning up after worship, please sign your name on the volunteer sheet near the coffee bar in the Fellowship Hall. Please consider helping when you can. It will take about an hour of your time once a month and will be greatly appreciated. We are asking our congregation to occasionally help with bringing a dessert. It does not need to be homemade. Anything from a bakery, whether it is gluten free, sugar free, or a regular dessert will help with making our coffee hour special for our members. Thank you in advance.

**Note: Volunteers are needed in the Fellowship kitchen to serve coffee after worship service!**

Elaine Giammasi, Chair

John Giammasi, Co-chair





As the Call Committee moves forward with the interviewing process, we need to be extremely aware that it is not only the pastoral candidates that are being interviewed – ultimately the pastoral candidates are interviewing GSLC. The call committee endeavored to put together a Mission Site Profile of our needs. And as with most interviews there is really never enough time to determine what is beyond the surface of the glossy pretty picture. Every candidate, every church, and every member has faults. Whomever ultimately accepts a call to GSLC will not be perfect – and how can we possibly expect them to be – just as GSLC will not be perfectly what they expect (and hope) as we continue along this process please understand the only “perfect” is God. The rest of us are human trying to do the best thing we can.

Over the months on this journey – there is no doubt that people are passionate about GSLC and truly want the best for our congregation. However, what is “best for the congregation”? Many have told members of the committee what we should be doing, we certainly appreciate the input. Please understand that we are required to follow what the Florida-Bahamas Synod requires and will continue to do so until the completion of the process.

As mentioned – a candidate is also interviewing us as a congregation – there will be an opportunity to meet and greet this person and ask questions of the candidate. This is your opportunity to participate in the process – we encourage you to do so.

After a candidate has accepted our call – please give them time to get to know GSLC – it is unlikely they will come in on day one making changes. Meet with them, talk with them, support their ideas.

Thank you for your prayers

*John Lepore, ZoAnn Weimer, Mel Pease, John Reichert, Lenore Deck, Nina Giglio*



# Craft & Share



Extra Extra Read All about it!!!

We have a new Chair in the house, and her name is Bonnett Washington.

Craft and Share will be meeting on January 28, 2026 from 10am – 2pm. We meet every fourth Wednesday of the month. We will take a lunch break, so don't forget to bring your lunch.

If you can, cut, sew, glue, and do simple crafts, this is the place to be. Come Join us we will have a blast! This month our theme will be "Valentine's" where we celebrate and express our love through gifts. We will be making Cards, Wreaths, snack plates, and candy jar Gnome's.

If this sounds exciting to you, don't be shy, come and share your craft skills so we can get these gifts to the sick and shut -in to show them we did not forget about them. Next month we will be working on the "Clothes Protector" kits with an Easter theme. We made some kits, so if you'd like to sew some at home at your convenience, please let me know.

I look forward to seeing many new faces coming to join Craft and Share

Bonnett Washington

(718)483-5638 (please call or text)



352-462-0901

SOS Food Pantry

PO Box 640774

**DONATE  
NOW!**

SOS DECEMBER DISTRIBUTION REPORT				
WEEK	FAMILIES	PERSONS	FOOD	WEIGHT
ENDING	SERVED	SERVED	WEIGHT	PER FAMILY
12/4/25	182	523	11,830	65lbs
12/11/25	110	323	8,250	75lbs
12/18/25	173	472	11,245	65lbs
12/25/25	Closed for Christmas			
TOTALS	465	1318	31,325	



SCAN TO  
DONATE



## Memorials and Special Gifts

Thrivent Donations from:

Thomas N. Okimoto

Nancy J Stephan

Colleen Straub in Memory of Michael Koch





To The Good People of Good Shepherd ...

Once again, our hearts (and pantry!) are full because of your generosity. It is so wonderful to know that you support our cause. We are truly blessed. Last year SOS gave out over 376 thousand pounds of food to 6900 families representing almost 19 thousand people! Those figures certainly tell a story of their own. Our friends and neighbors are struggling, and they need all the help they can get.

Because of our dedicated volunteers and generosity of folks like yourselves, we can continue to provide that help. Although we collect significantly more during the holidays, we still need donations year-round. Remember that you can give through Good Shepherd in your church envelope, a separate check, or mail your donation directly to SOS Food Pantry, PO Box 640774, Beverly Hills, FL 34464.

Non-perishable food items are always welcome.

It is our prayer that you had a wonderful holiday season with family and friends and that you may enjoy good health, love, and happiness in 2026. Thank you all very much.

Sincerely,

Maria Cyr, P

# Property Committee

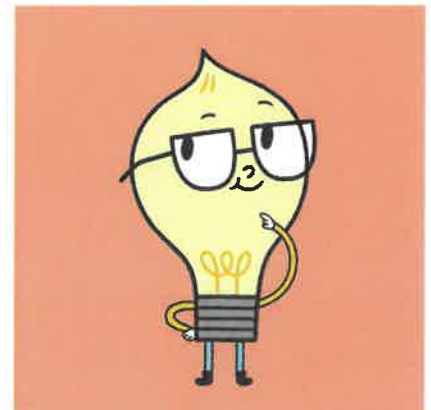


Property has been shoveling snow on and off in the past few weeks.....

If you believe that, we have a bridge to sell you.



Property has been working on inside projects and miscellaneous other things such as converting ceiling lights to LED lights and eliminating the ballasts.



## Eucharistic Ministry

Volunteers are always needed to assist at Services held at assisted living facilities. Compass Rose is the first and third

Mondays. Best Care is on the second Monday. The Reserve is the fourth Monday. All services start at 10 AM and volunteers are needed before service to assist those needing help.

Contact Rick Minister or Sharon Maxwell.



## Health Ministry



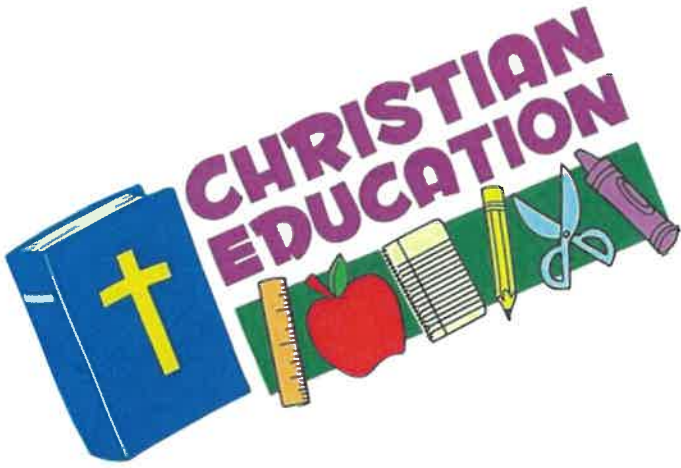
Your Faith Community Nurse is Kathy Metz, she can be reached @ 352-746-1911 and the Health Team Members are: Barb Lauer, Donna Pease, John Colson, and Leith Masters. worship.

We always take donations for Hygiene kits.



**Publix Bread Pick-up:**  
**Sign up in the Narthex**  
**Deliveries to: CUB**

## Christian Education



With a new year, a new agenda starts for the Children here at Good Shepherd. After much thought and prayer, I have decided to work with the children on the Ten Commandments and how they can affect us in our everyday life. Understanding why we have rules, and how they apply to us personally, is an important lesson to instill.

We will be tackling these “rules” one at a time, making connections to stories from the Bible, along with personal connections to cement their value. Please, any adults may come in and join us and our discussions at any time.

About adult education, we will be starting a few “mini” classes with discussion within the next few months. Please keep an eye out for upcoming information in the bulletin. They will be an open discussion-based format, and each will be one to two sessions long. Each session will have a specific passage or passages from the Bible, a breakout time to discuss within a group, followed by whole group discussion.

*Yours in Christ*  
**Sue Fowler**  
**Christian Ed Chairman**





We

are excited!!!! The equipment is here and we are ready to start our podcast!!! There are already many ideas that we came up with that we are looking forward to doing. We are looking for any adult that would like to come to talk with the children. Some of our ideas include how things have changed since when you were our age, and we would like to share with you how we feel about things now, current stereotypes, and what coming to church means to you.

If some of these topics appeal to you, please let Miss Sue know.

We are also trying to come up with a name for our podcast show that would be catchy and interesting. If you have any ideas for a name, please put it on a piece of paper and place it in the collection plate along with the title, Podcast Name.

Thank you so much for your support here at Good Shepherd!





# WORSHIP & MUSIC



Dear Good Shepherd Family and Friends,

I would like to extend my most heartfelt thanks for all the beautiful and generous gifts from you during our Christmas season. Every gift is greatly appreciated and gives me wonderful memories. All of you are very special to me!

Love and Blessings,

Renate Williams

## FEBRUARY

As we had 90 plus names listed on our ***“Relatives and Friends”*** prayer list in our “Monthly Newsletter “instead of listing all the person(s)’ names, we offer the following “Options” so that you/we can regularly lift up your/our ***“Relative and Friends”*** in prayer.

**We invite you to raise up the person(s) name silently or aloud at our Sunday Morning Worship Service during the “Intercessory Prayer” as we pray *“The Prayer for Healing”* as we give the congregation the opportunity to lift up our name(s) of concern *“aloud or silently in our hearts.”***

**We invite you to share your prayer concern(s) by writing the person(s)’ name and concern on the back of the “Welcome”/Prayer Request” card found in the pew rack and then place it in the offering plate. Your prayer request(s) will be specifically lifted up during our “Wednesday Morning Prayer Service.**

**We invite you to attend our “Wednesday Morning Prayer Service” beginning at 9:00 am. It is a simple prayer service at which you can personally raise up the person(s)’ names and concern either “silently or aloud.”**

**We invite you to place your “Relative or Friend” name(s) on our “Prayer Chain” by contacting Marcia Reichert at [mareichert55@gmail.com](mailto:mareichert55@gmail.com)**

**We offer the following “General Prayer” that you may regularly use as you pray for your *“Relative and Friends”* for the Lord’s blessing, compassion, healing and wholeness:**

***“Compassionate God, look with favor upon those who are sick, suffering, grieving or have any need (especially.....INCLUDE NAME(S) and grant them healing, comfort, wholeness and your peace that surpasses all human understanding. In Jesus’ name. Amen***

**God’s Blessing Always!**

***“The Lord is near to all who call on Him, to all who call on Him in Truth.” (Psalm 145:1)***

# Newsletter Editor

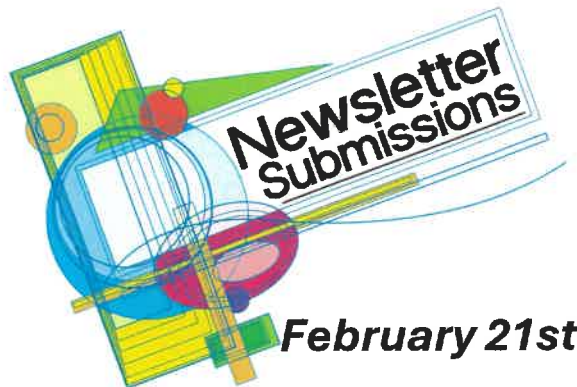
## MESSAGE FROM FINANCIAL SECRETARY

Year-end financial statements for 2025 are available upon request. Please follow these steps to get yours.

- 1.- Send an email to [financial-secretary@gslchernando.org](mailto:financial-secretary@gslchernando.org)
- 2.- Drop a request in my mail box in the office.
- 3.- You may write a note on your church giving envelope that you would like a statement.
- 4.- Call me or leave a message with the office.

Don't forget to let me know if you want your statements by email, by mail, or if you would like to pick up a hard copy. If you have any questions, don't hesitate to contact me.

Best Regards,  
Stephanie Adams



God's work. Our hands.

### CHURCH STAFF

#### Pastor Bob Yankovitz

Office: 352-746-7161

Fax: 352-746-5013

Email: [pastor@gslchernando.org](mailto:pastor@gslchernando.org)

#### Administrative Assistant

#### Lucia Bertrand

Phone: 352-746-7161

Email: [admin@gslchernando.org](mailto:admin@gslchernando.org)

**SUNDAY SCHOOL/NURSERY— SUE FOWLER**



**Lectors**

<b>February 1st</b>	Brenda Landfried
<b>February 8th</b>	Tom Kranauer
<b>February 15th</b>	Margot Berger
<b>February 22nd</b>	John Giammasi



**Ushers**

***Please be at church by 9:15 am for 10 a.m., service***

**February 1st & 8th**

Cherie Earl, Maggie Kirkeby and Gary Bush

**February 15th & 22nd**

Dave & Pag Bocker and Gary Knecht

**Sound room**



FRAN STETSON, JOHN GIFFORD, JOE ADAMS, DAN CASHMAN



JOHN COLSON—**DEACON**

**DONATE QR CODE CLICK FOR LINK**



## STANDING COMMITTEE CHAIRS

## COUNCIL LIASONS

### Building/Property

Harv Johnson 352-270-3391

### Christian Education

Sue Fowler 352-464-0571

### Enduring Gifts

Dan Cashman 352-400-6024

### Outreach

Tom Stickler 610-659-5553

### Fellowship

John & Elaine Giammasi  
352-527-8706

### Finance

TBD

### Social Ministry

Vera Swade 352-637-5308

### Stewardship

Mike Busler 860-906-8234

### Technology

Fran Stetson 352-419-7727

### Worship & Music

Renate Williams 352-228-7809

### Building/Property

John Colson 352-634-5470

### Christian Education

John Giammasi 352-527-8706

### Enduring Gifts

Kathleen Swartz 352-422-6717

### Outreach

Sue Buldiger 908-303-2021

### Fellowship

Gladys Kean 352-514-6998

### Finance

Sue Fowler 352-464-0571

### Social Ministry

Cara Stickler 610-505-2409

### Stewardship

Dan Cashman 352-419-4356

### Technology

Fran Stetson 352-419-7727

### Worship & Music



**WEBSITE**  
[gshernando.org](http://gshernando.org)  
 Webmaster: Stephanie Adams  
[webmaster@gsichernando.org](mailto:webmaster@gsichernando.org)



# Kid's Corner

NAME: \_\_\_\_\_

DATE: \_\_\_\_\_



## Disney Word Find



Y	Z	A	Z	U	I	B	J	O	G	V	S	V	Q	V	J	U	Z	H	C	G	D	R
H	S	I	V	Y	X	W	J	A	S	M	I	N	E	Z	M	A	Z	E	D	Y	H	Q
B	M	N	M	I	C	K	E	Y	M	O	U	S	E	U	Y	N	C	R	N	H	I	M
D	U	L	E	H	I	O	X	R	A	C	S	Z	O	W	M	C	S	N	O	H	N	L
I	U	N	Z	E	Q	L	A	L	U	S	R	U	K	R	M	Y	I	A	T	S	R	L
G	Y	R	P	L	Z	P	S	I	R	P	B	B	A	G	Y	I	S	I	I	L	A	F
D	D	Z	N	I	J	Y	I	E	E	J	X	G	S	M	C	D	B	T	R	E	F	L
B	A	S	K	Y	Y	K	H	C	P	S	X	I	A	X	R	S	K	S	T	E	A	F
J	L	P	N	P	E	I	E	N	M	L	F	P	F	A	E	E	Q	A	H	P	J	S
B	K	Y	B	P	Q	P	Q	I	U	D	I	U	U	P	P	G	Z	B	Z	Y	H	T
N	N	P	I	A	Y	Y	A	R	H	N	M	H	M	U	D	M	M	E	A	K	B	D
O	D	F	H	H	F	B	W	P	T	S	E	A	H	M	K	P	D	S	G	H	O	N
M	G	N	T	D	L	Y	A	U	T	X	I	I	Q	B	B	M	J	B	R	C	R	U
I	D	S	L	X	V	S	S	E	F	T	K	A	J	A	H	A	Z	E	M	N	S	R
T	Q	P	C	C	W	E	F	J	H	U	O	Z	K	Z	W	R	E	X	L	X	B	A
X	T	R	W	U	J	R	B	E	P	O	C	A	H	O	N	T	A	S	E	P	E	T

MICKEY MOUSE

POCAHONTAS

SEBASTIAN

JASMINE

THUMPER

SCAR

SNEEZY

URSULA

TRITON

MUFASA

PRINCE

SLEEPY

TRAMP

TIMON

HAPPY

JAFAR

PUMBA

PERCY

MEIKO

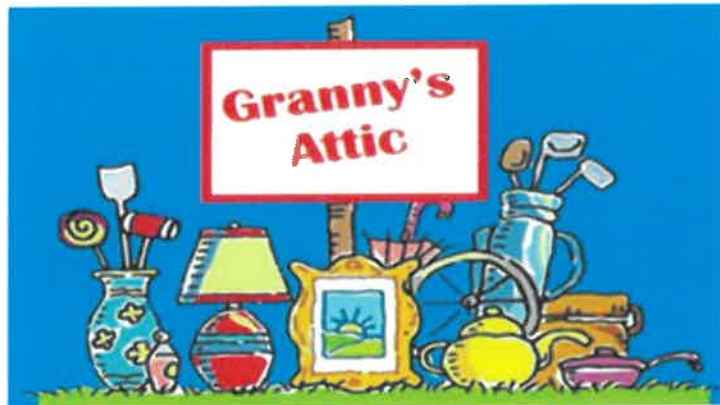
LADY

ZAZU



COOL2BKIDS

*FROM OUR FRIENDS FROM SAINT TIMOTHY'S*



**2026 MINI GRANNY'S ATTIC**

**Where: ST. TIMOTHY LUTHERAN CHURCH  
1070 N. SUNCOAST BLVD.  
CRYSTAL RIVER, FL 34429  
(352) 795-5325**

**When: FRIDAY, FEBRUARY 13, 2026  
8:00 am to 2:00 pm**

**What: Delicious homemade goodies in the Bake Shop  
Festive and special items in the Holiday Shop  
Ever-popular Men's Outdoor Treasures  
Terrific buys throughout Granny's Attic**

***Save the date. Come join in the fun!***





**First Annual Spring Fling Indoor Arts and Crafts Fair**  
Outdoor Flea Market Trunk Sale

**Good Shepherd Lutheran Church**  
439 E Norvell Bryant Hwy  
Hernando, FL 34442

**Saturday, March 28, 2026**

**9 AM until 2 PM**



**Vendor information: Indoor 8 foot tables-\$25 each**

**Indoor vendors will be arts and crafts only**

**Outdoor parking spots-\$15 each**

**Outdoor vendors will be arts and crafts and**

**Flea Market trunk sale**

**Food vendors-\$30**



**For more information and applications, please contact**  
**Renate Williams-call or text 352-228-7809 or email at**  
**[renate@play88keys.com](mailto:renate@play88keys.com)**






**Clean out your closets and fill up those trunks! Rent an**  
**outdoor spot to sell your items.**



**Get to work with your artistic skills and create awesome**  
**arts and crafts to display and sell at an indoor table!**

**No admission fee for the public to attend and do your**  
**spring shopping. Bring the family! Something for**  
**everyone!**

## WEDNESDAYS A TIME FOR PRAYER

Sunday	Monday	Tuesday	Wednesday	Thursday	Friday	Saturday
<b>1</b> <b>10:00 AM</b> Worship <b>11:00 AM</b> Sunday School Gideons Presentation	<b>2</b> <b>10:00 AM</b> EM Compass Rose <b>1:30 PM</b> Social Ministry	<b>3</b> <b>8:30 AM</b> Weight Watchers <b>12:00 Noon</b> WELCA <b>1:00 PM</b> Worship & Music <b>6:30 PM</b> Bells Rehearsal <b>6:30 PM</b> Cub Scouts	<b>4</b> <b>9:00 AM</b> Prayer <b>10:00 AM</b> Quilters <b>2:00 PM</b> Citrus Newcomers <b>6:30 PM</b> Choir Rehearsal	<b>5</b> <b>7:30 AM</b> SOS <b>9:00 AM</b> CFQG** <b>9:30 AM</b> Executive Meeting <b>1:00 PM</b> Outreach <b>2:00 PM</b> Stewardship 	<b>6</b> <b>8:00 AM</b> GROUNDS	<b>7</b> <b>10:00 – 2:00</b> Sp. Lang Church
<b>8</b> <b>10:00 AM</b> Worship <b>11:00 AM</b> Sunday School	<b>9</b> <b>10:00 AM</b> EM Best Care <b>1:30 PM</b> Fellowship	<b>10</b> <b>8:30 AM</b> Weight Watchers <b>5:00 PM</b> Fairview States POA <b>6:30 PM</b> Bells Rehearsal	<b>11</b> <b>9:00 AM</b> Prayer <b>6:30 PM</b> Choir Rehearsal	<b>12</b> <b>7:30 AM</b> SOS <b>3:00 PM</b> Council Meeting 	<b>13</b> <b>8:00 AM</b> GROUNDS	<b>14</b> <b>10:00 – 2:00</b> Sp. Lang Church
<b>15</b> <b>10:00 AM</b> Worship <b>11:00 AM</b> Sunday School	<b>16</b> <b>10:00 AM</b> EM Compass Rose	<b>17</b> <b>8:30 AM</b> Weight Watchers <b>5:00 PM</b> Shrove Tuesday Pancake Dinner <b>6:30 PM</b> Bells Rehearsal	<b>18</b> <b>9:00 AM</b> Prayer <b>10:00 AM</b> Quilters <b>6:30 PM</b> Choir Rehearsal	<b>19</b> <b>7:30 AM</b> SOS <b>10:00 AM</b> Christian Ed. <b>11:00 AM</b> CCFQG 	<b>20</b> <b>8:00 AM</b> GROUNDS	<b>21</b> <b>10:00 – 2:00</b> Sp. Lang Church 
<b>22</b> <b>10:00 AM</b> Worship <b>11:00 AM</b> Sunday School	<b>23</b> <b>10:00 AM</b> EM Reserve	<b>24</b> <b>8:30 AM</b> Weight Watchers <b>6:30 PM</b> Bells Rehearsal	<b>25</b> <b>9:00 AM</b> Prayer <b>10:00 AM</b> Craft & Share <b>6:30 PM</b> Choir Rehearsal 	<b>26</b> <b>7:30 AM</b> SOS	<b>27</b> <b>8:00 AM</b> GROUNDS	<b>28</b> <b>10:00 – 2:00</b> Sp. Lang Church
<div> <div> <b>Breakfast at Mama's Kuntry Kafe</b>  <b>Every Tuesday @ 7:30 a.m.</b>  **EM EUCHARISTIC MINISTRY </div> <div> <b>Lunch at Angelotti's</b>  <b>First Thursday @ Noon</b>  ** CITRUS COUNTY FRIENDSHIP QUILTERS GROUP </div> </div>						