



## **Forest Meadows Emergency Plan Residents' Summary**

**Adopted  
June 13, 2016  
by  
FMOA Board of Directors**

## Purpose

To provide a plan for the orderly, efficient and safe evacuation of people from areas within the Forest Meadows community when threatened by emergency incidents that are potentially life threatening. This summary is the information necessary for residents for orderly and safe evacuation of Forest Meadows. Complete copies of the full plan are available on line and in the association office.

### ***Important Numbers:***

***FMOA Office – 728 -2511***

### ***Phone numbers of emergency responders:***

Ebbetts Pass Fire District **(209) 795-1646**

CalFIRE Tuolumne-Calaveras **(209) 795-1542**

Calaveras County Sheriff's Office **(209) 754-6500**

Calaveras County Office of Emergency Services **(209) 754-2890**

Emergency - **911**

### ***Sign up for emergency notifications at:***

**[www.nixle.com](http://www.nixle.com)**

**<http://oes.calaverasgov.us/notifications>**

## Table of Contents

1. Evacuation Orders .....	1
2. How Evacuation Orders are to be Delivered to Forest Meadows .....	1
3. Emergency Communication .....	1
4. Resident Emergency Preparation and Responsibilities .....	2
5. Emergency Exit Directions .....	2
6. Maps .....	5

## 1.0 EVACUATION ORDERS:

Evacuation orders in Calaveras County may be either Advisory or Mandatory. Given our limited number of emergency exits and poor communication infrastructure in our vicinity, FMOA will treat an **Advisory Evacuation as a Mandatory Evacuation**--resources will be mobilized to notify you of the emergency and FMOA strongly urges you to evacuate, though you are not legally obliged to do so. If you choose to remain until a Mandatory Evacuation is ordered and you are legally required to leave, your options for evacuation, and your time to prepare, may be severely reduced.

Forest Meadows residents should plan ahead for such a scenario by:

- Developing a family emergency plan,
- Building an emergency supply kit,
- Making sure that the gas tank is always at least half full, etc.
- Taking a complete household inventory.

## 2.0 HOW EVACUATION ORDERS ARE TO BE DELIVERED TO FOREST MEADOWS:

- Calaveras County Sheriff's Office will inform FM residents who have registered for the Calaveras Alert and Nixle services of the evacuation status via those services (home phone, cell phone, email alerts are all available).
- Local radio/TV stations will be informed and will broadcast the order. We strongly urge all residents to obtain a battery-operated radio; internet and cellphone networks in this area are unreliable in an emergency.
- Emergency personnel and/or FMOA Community Response team composed of security, maintenance personal and resident volunteers will inform the community of the evacuation order by the following:
- Announcements broadcast by bullhorn from the Security vehicle. Flashing lights and sirens on this vehicle will also be employed to get residents' attention.
- E-blast (email) and notice on FMOA website, [www.fmowners.com](http://www.fmowners.com)
- Notice board at front gate
- Residents will be directed to specified emergency exits. Do not assume all emergency exits will be safe to use.
- In the event of a Mandatory Evacuation, in addition to the above, public safety officials will go door-to-door to notify residents to leave.

## 3.0 EMERGENCY COMMUNICATION INFORMATION

### *Nixle and Calaveras Alert signup information:*

Both of these services, which the County will use to contact residents in cases of emergencies, may be accessed via the web.

- **Nixle** is described here: <https://nixle.com/alert/4774029/> To sign up go to [www.nixle.com](http://www.nixle.com)
- **Calaveras Alert Emergency Notification program** is explained here: <http://oes.calaverasgov.us/notifications>

Registration instructions are included on this page. You can register your home phone, cell phone(s), receive text messages, emails and notifications on social media using these services. We recommend you sign up for both.

- **Other notification services:**

Local radio stations: KVML 1450 AM, KKBN 93.5

Local cable television (Comcast channels 7 and 9)

Announcements on monitored websites: [www.motherlode.com](http://www.motherlode.com), [www.pinetree.net](http://www.pinetree.net), [yubanet.com](http://yubanet.com), [www.FMOA Owners.com](http://www.FMOAOwners.com)

- **Phone numbers of emergency responders:**

Ebbetts Pass Fire District (209) 795-1646

CalFIRE Tuolumne-Calaveras (209) 795-1542

Calaveras County Sheriff's Office (209) 754-6500

Calaveras County Office of Emergency Services (209) 754-2890

**Call 911 in case of emergency!!**

## **4.0 RESIDENT EMERGENCY PREPARATION AND RESPONSIBILITIES**

### **4.1. Pre-Fire Planning:**

- Family preparation involves creating a plan--where will you evacuate, how will you meet, how will you communicate.
- Ensure everyone in your family knows where the gas and electric shutoff is and how to use them.
- Review evacuation routes from your location and designate an emergency meeting location outside the hazard area. Keep enclosed map of Forest Meadows and emergency exit routes handy. Plan where you will go east or west from Forest Meadows.
- Take an inventory of major household items and belongings. Use a video camera or take digital photographs. Store information with important papers.
- Designate an out-of-area friend or relative as a point of contact, so you can communicate with family members who have relocated.
- Keep a list of emergency contact numbers near your phone and make sure they are programmed into your cellphone.
- Prepare an emergency supply kit including: a battery-powered radio, spare batteries, emergency contact numbers, blankets, snacks and ample drinking water.
- Prepare an evacuation checklist long before a fire threatens, and organize what you plan to take with you:
  1. Critical medications
  2. Important personal papers and photographs, including insurance information
  3. Essential valuables
  4. Change of toiletries and clothing
  5. Cell phone and computer (make sure you take power cords as well)
  6. Critical papers and effects
  7. An evacuation route map

*Hint: keep large trash bags, pillowcases, or storage boxes or baskets near those items you may want to take with you.*

- If you have pets, make sure you have the following:
  1. food, water and bowls for each pet.
  2. paper towels/plastic bags/spray disinfectant for waste cleanup
  3. extra collars/ID tags
  4. copies of all medical and vaccination records
  5. 2-week supply of medication, plus copy of prescription
  6. blanket or large towel

7. crate or traveling carrier large enough for the pet to stand up and turn around.
  - Make sure all crates are labeled with the pet's name, your name, and a phone number where you can be reached.
8. **first aid kit (you can find out how to get one already prepared at <http://cads-team.org/contact-us/>)**

#### **4.2. Getting Set to Go:**

Get set to leave before a formal evacuation is ordered. Evacuate as soon as you are packed and let family and neighbors know you are leaving. Stay tuned to your local radio and TV stations and relevant social media for updates. Finally, remain close to your house, stay hydrated and keep an eye on your pets-- keep them inside and be aware of where they are as much as you can. With unfamiliar sounds, smells, and sights that follow a disaster, household pets can easily become confused and get lost. Dogs and cats should wear appropriate identification at all times. Know your cat's and dog's common and favorite hiding places. Once the chaos starts, this is where you will find them.

- Make sure you know at all times where your car keys are, your glasses, your wallet, your cellphone, etc.--all the things you want on your person when you leave.
- **Inside your home,**
  - shut windows and doors,
  - remove flammable window shades and curtains;
  - If you have time, move flammable furniture to the center of the room, away from windows and doors.
  - Turn off gas, pilot lights, heating and air conditioning units,
  - leave some lights on so firefighters can see your house under smoky conditions.
- **Outside the house,**
  - gather flammable items from the immediate exterior of the house, and move them away from the home.
  - Turn off any sprinklers or water system, leave your exterior lights on. I
  - If you have a ladder and shovel, leave them where they are easily visible.
  - Have your car ready to head out the driveway and shut the windows and **lock your doors.** If firefighters have to get in they can break down the door to gain entry. Make sure there are no obstructions in your driveway or entry that would block firefighters from gaining entry to your house.
- Follow instructions to proper exit route and to designated shelter area to register your evacuation.
- FMOA personnel will remotely update the FMOA dedicated phone line and website periodically as changing conditions warrant, and will advise via e-blast, the website and phone line when our evacuation status has been lifted and it is safe to return.
- Do not trust information on social media sites.

## **5.0 EMERGENCY EXIT DIRECTIONS**

At present (June 2016) these are the only two emergency routes cleared and usable in case of emergency. Two others are in the process of being made available for our use: information for those will be provided as soon as it is available.

### **5.1 Heather Drive Emergency Exit:**

**Suitable for all vehicles, but take care with the one hairpin turn.** This exit is accessed via a gate at the top of Heather Court, and is almost entirely a two-lane, paved road.

From the sign at the top of Heather Court, proceed straight ahead through the gate, up a graveled road that looks as though it is a driveway (there is a house on the right). This meets a paved road in about 0.1 miles; **turn LEFT** and proceed downhill; there is a tight, hairpin left turn, and shortly after a less tight right turn. In about 0.8 miles, this road dead-ends; **turn LEFT**, which brings you in about another 0.1 mile to Highway 4, just below the Red Apple fruit stand.

### **5.2 Oakwood-Penn Gulch Emergency Exit**

**NOT suitable for RV's, vehicles towing campers. etc., vehicles with long wheelbases, or vehicles with low ground clearance. This route is long, narrow, and can be easily blocked by one car--it should be considered a secondary exit route, used ONLY if no other is available.** This emergency exit is accessed via Oakwood Court. Mileages are given from the intersection of Sandalwood Drive and Oakwood Court.

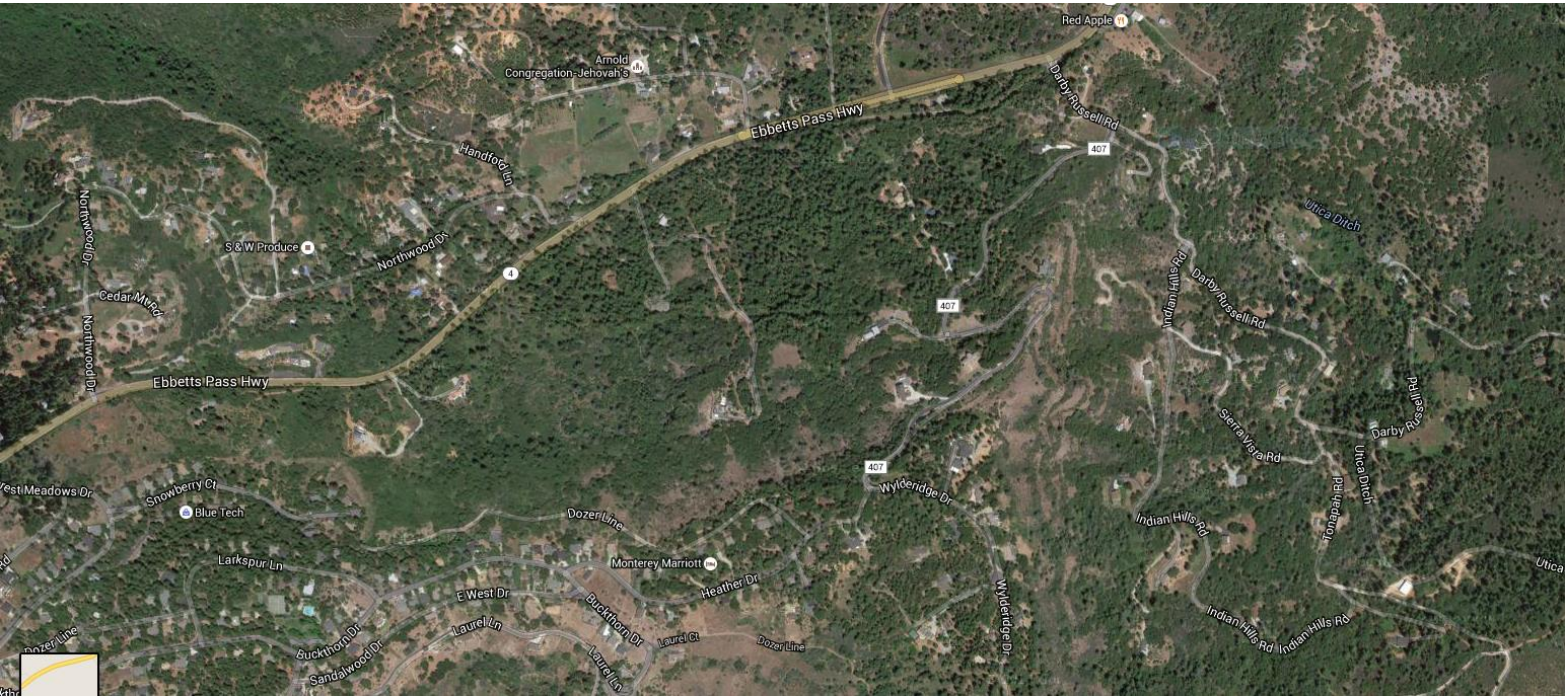
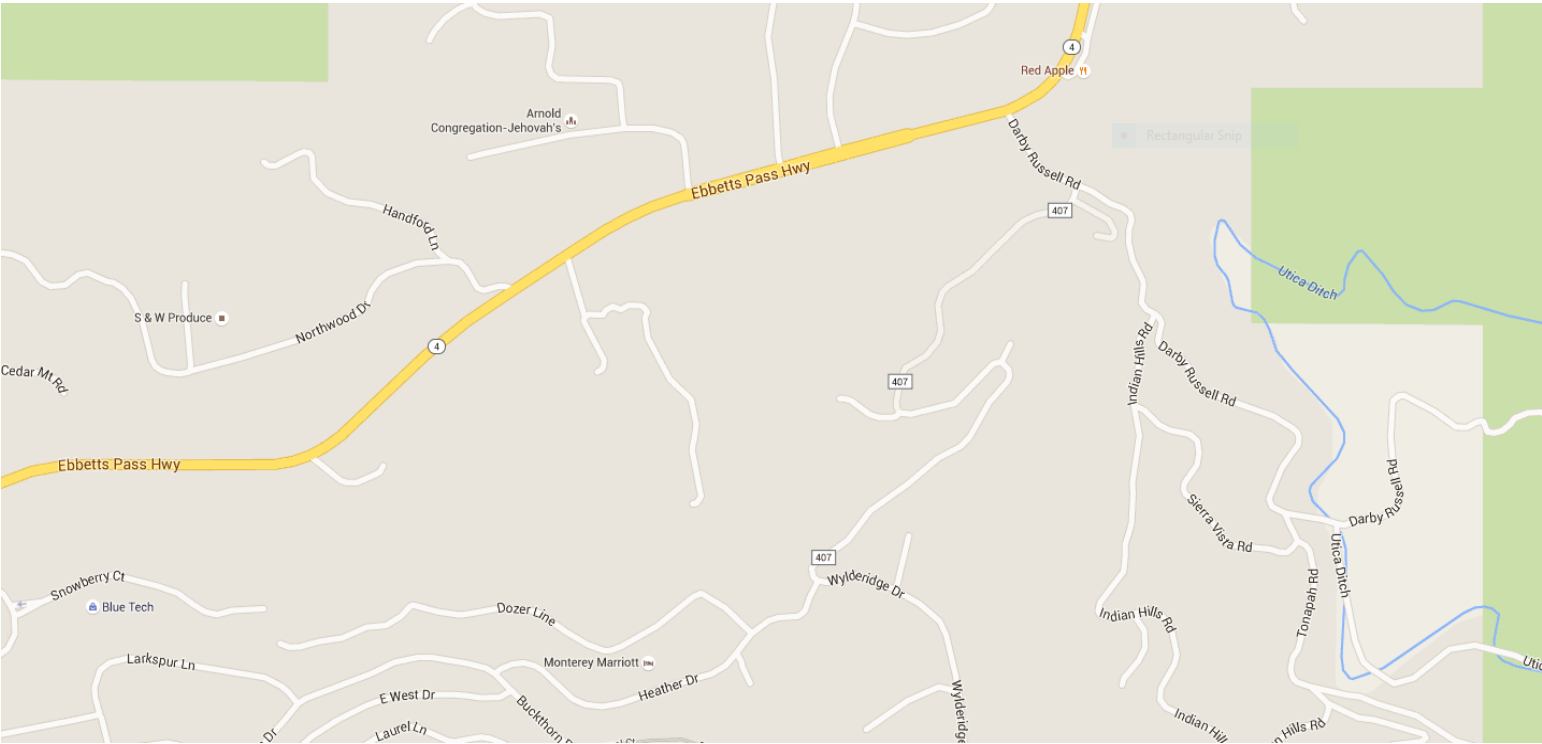
From the end of Oakwood Court, proceed straight ahead on a narrow, paved road for 0.1 mile to a gate, which will be opened in case of emergency. Continue through the gate on this road; there are two tight turns which require caution. 0.4 mile from Sandalwood, the pavement ends. **Bear LEFT** onto the dirt road; **DO NOT GO RIGHT, AND DO NOT GO STRAIGHT.** 0.7 mi from the entrance there is another tight turn; continue slightly uphill, and shortly after this turn **bear RIGHT** at the fork. 0.9 mi from Sandalwood, turn right again; this road (now Pennsylvania Gulch Road) becomes paved 0.1 mi ahead. Follow it through the woods and along the gulch on your right; 4.2 mi from the entrance, **turn RIGHT** (labeled Penn Gulch; the turn to the left is labeled Skunk Ranch Road). 5.5 miles from the entrance, this road intersects highway 4 just below Murphys

*See maps on following pages*



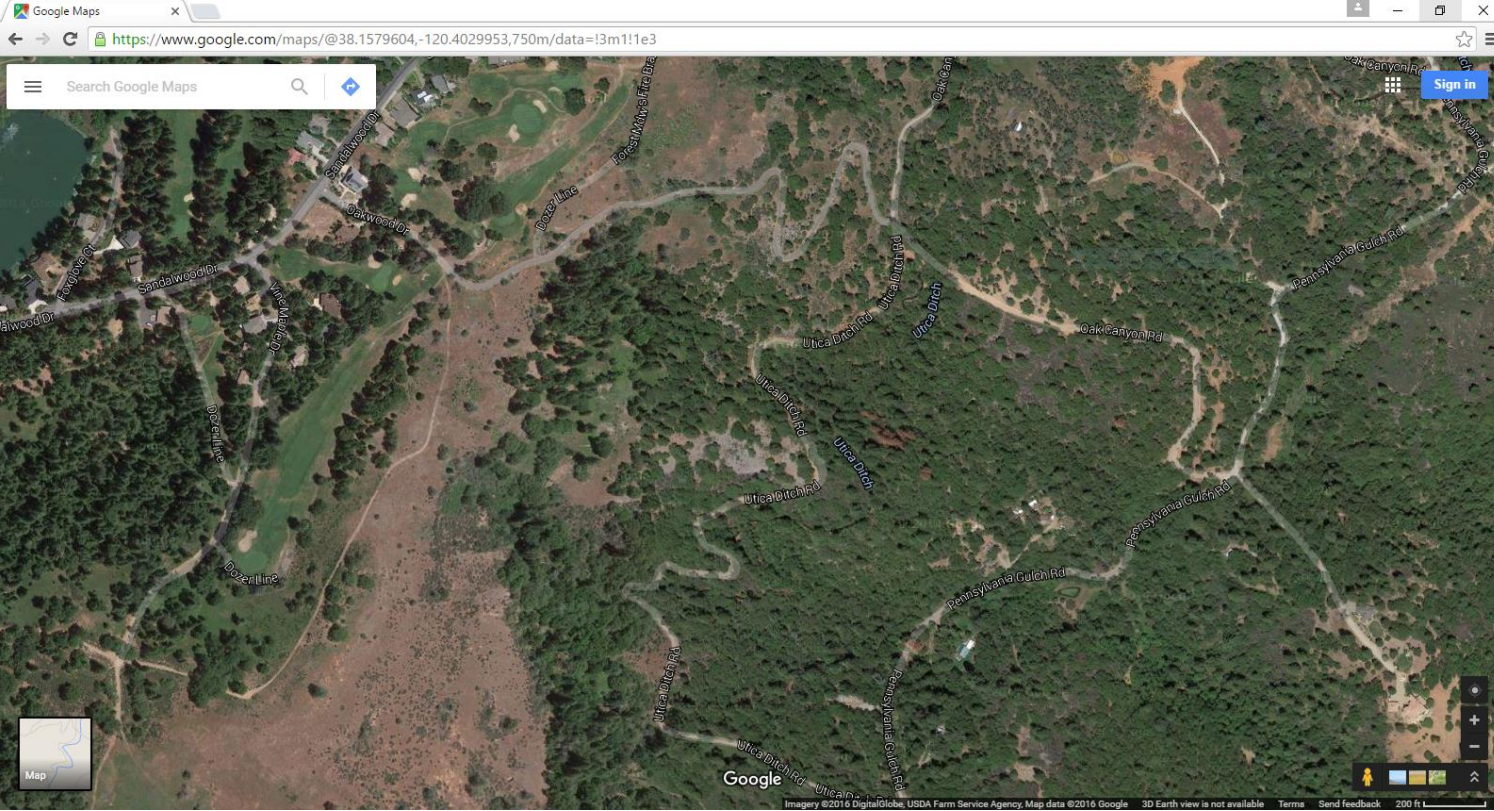
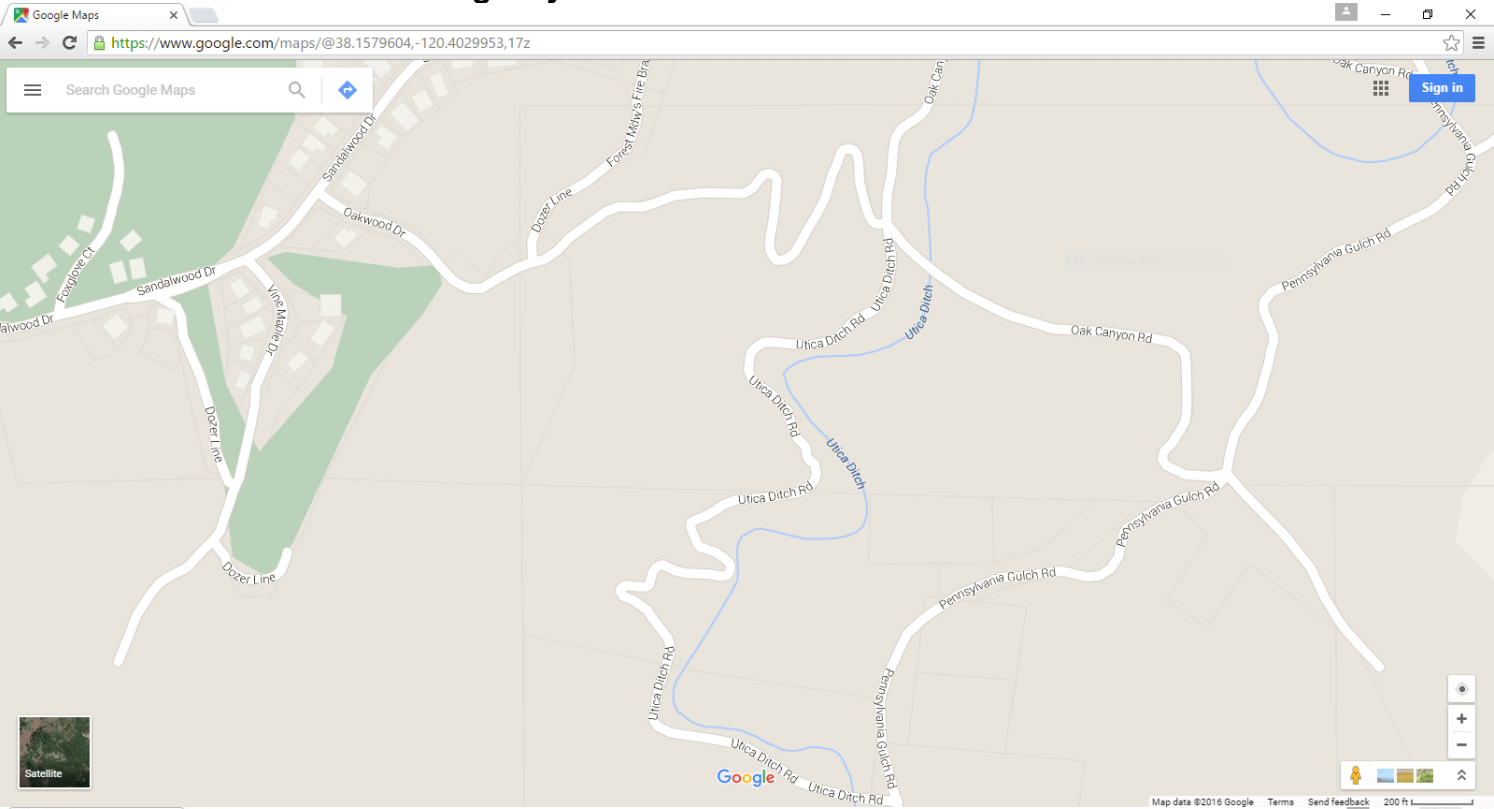
6.0 MAPS

6.1 Heather Drive Emergency Exit





6.2 Oakwood Penn Gulch Emergency Exit





## 7.0 SHELTER IN PLACE

Whether you are at home, work or elsewhere, there may be situations when it's simply best to stay where you are and avoid any uncertainty outside.

There may be circumstances when staying put and creating a barrier between yourself and potentially contaminated air outside, a process known as "sealing the room", is a matter of survival.

Use common sense and available information to assess the situation and determine if there is immediate danger. If you see large amounts of debris in the air, or if local authorities say the air is badly contaminated, you may want to take this kind of action.

- The process used to seal the room is considered a temporary protective measure to create a barrier between you and potentially contaminated air outside. It is a type of sheltering in place that requires preplanning.
  - Bring your family and pets inside.
  - Lock doors, close windows, air vents and fireplace dampers.
  - Turn off fan, air conditioning and forced air heating systems.
  - Take your emergency supply kit unless you have reason to believe it has been contaminated.
  - Go into an interior room with few windows, if possible.
  - Seal all windows, doors and air vents with 2-4 mil. thick plastic sheeting and duct tape. Consider measuring and cutting the sheeting in advance to save time.
  - Cut the plastic sheeting several inches wider than the openings and label each sheet.
  - Duct tape plastic at corners first and then tape down all edges. Be prepared to improvise and use what you have on hand to seal gaps so that you create a barrier between yourself and any contamination.

Local authorities may not immediately be able to provide information on what is happening and what you should do. However, you should watch TV, listen to the radio or check the Internet often for official news and instructions as they become available. You may want to think about getting a land line that will operate without power.

- Items to put in your emergency supply kit:
  - Water, one gallon per day per person plus water for pets,
  - Food items for special dietary needs, foods that are not overly salty and at least a three-day supply of food per person.
  - A well-stocked first aid kit,
  - A battery operated radio with a wind up option. Check batteries each year and replace if necessary.
  - Battery operated lanterns and flashlights are a better option to using candles,
  - A set of clean clothes and toiletry items if this is the emergency kit you have put together to take to an evacuation shelter.
  - A supply of dry firewood, fire starter sticks, kindling and newspaper on hand just to be used for emergencies, for instance if there is no power for a three-day period and you have a wood burning stove or fireplace.
- If a mandatory evacuation should occur here are a few tips:
  - Take your emergency kit of supplies with you if you are planning to go to a shelter.
  - You may want to include playing cards, and a game or two.

Residents at particular risk in case of a prolonged shelter-in-place emergency, such as a major winter storm that knocks out power over a wide area, are encouraged to identify their special needs well ahead of such an emergency so they can receive necessary attention should such an event occur.