

2024 Crawford County Fair Book Dedication

Watch, Grow, Lead!

Dedicated to the Crawford County Fair Volunteers:

With every seed you plant, every moment you give, you help our community Watch, Grow, and Lead. Your tireless efforts nurture the heart of our fair, ensuring it flourishes year after year. You are the roots that anchor our traditions and the hands that guide us toward a brighter future. Thank you for your unwavering dedication and for being the true leaders of our county fair.

TABLE OF CONTENTS

Dedication	1
Table of Contents	2
Schedule of Events	4
Mutton Bustin'	7
Admission Prices	10
Fair Board Officers	12
General Rules & Regulations	13
Commercial Exhibit Building	15
Farm Equipment/Vehicle Exhibits	16
Show Ring Code of Ethics	18
AR Livestock & Poultry Com.Rules & Regs	20
Junior Livestock Sale	25
Junior Livestock Auction Rules & Regs	26
Barn Superintendents	28
Food Concessions	30
Beef Cattle	32
Round Robin Showmanship Contest	35
Sheep Department	36
Swine Department	39
Dairy Cattle	41
Bench Building Contest	44
Goats	46
Poultry	49
Hay Show	51
Rabbits	52
Talent Competition	53
Pageants	56
Youth	57
Jr Fair Queen/Fair Queen	58

JLA Buyers	62
Fair Parade	65
Belt Buckle Sponsors	67
Equine Expo	69
Home Economics Division	72
Agronomy/Horticulture	74
Floriculture	75
Canning	78
Creative Table Setting	80
Art	82
Photography	83
Clothing	84
Household Arts	87
Foods	88
Handicraft	90
Educational Exhibit Booths	94
Costume Contest	96
Advertiser Index	
Note from Publisher	
Coloring Contest	

2024 SCHEDULE OF EVENTS

Saturday, August 24

8am - 11am Poultry Blood Testing

9am - **Mandatory** Clean-Up Day for Livestock Exhibitors

9am - 11am Check-in for all livestock entries

Thursday, August 29

5pm - Talent Competition Entry Fee/Registration Deadline

Pageant Entry Fee/Registration Deadline

Saturday, September 7

8am - 10am - Registration for Equine Expo

10am - Parade Lineup Begins

10am - Food Concession Setup

12pm - 4pm - Commercial Exhibits Setup

11am - Parade - Downtown Mulberry

12pm - Free Kick Off Activities (No Gate Admission Fee)

12:30pm - Equine Expo

Sunday, September 8

12pm - 6pm - Food Concession Setup

1pm - 4pm - Commercial Exhibits Setup

Monday, September 19

10am - 6pm - All Goats, Sheep, and Dairy Cattle Entry

11am - Home Economics Superintendent Meeting

12pm - 6pm - Food Concession Setup

4pm - 7pm - Commercial Exhibit Setup

4pm - 6pm - Home Ec Building Entries Accepted

4pm-6pm - Livestock entry - Check in with Secretary (SE corner of barn)

8pm - Market / Commercial Goat and Lamb Weigh-in

Tuesday, September 10 *(Family Night –Donation of 1 canned food item per person)*

9am- Broiler Show, Poultry Judging, Rabbit Show;

Dairy Cattle and Dairy Goat show at conclusion of Rabbit Show

9am- 4pm - Home Economics Building closed for judging

4pm - 9pm - Home Ec & Horticulture Exhibits Open

4pm - Gates Open to Public for Entry

4pm - 10pm Commercial Exhibits Open

7pm - Hogs & Beef Cattle Entries must be in place

6:30pm - Hay Show - Meal & Presentation

8pm -Market Hog, Feeder and Market Steer, Commercial Heifer and Gilt weigh-in

Wednesday, September 11

9am - 9pm - Home Ec & Horticulture Exhibits Open
9am - Market Sheep, Market Goats, Breeding Sheep, Breeding Goat Show
4pm - 10pm - Commercial Exhibits Open
4pm - 9pm - Carnival Open - Armbands Available
7pm - Gospel Night with Ridgeline Church-- (main stage)

Thursday, September 12

8am - Market Hog, Breeding Hog, Feeder Steers, Market Steers, Breeding Cattle Show
9am - 9pm - Home Ec & Horticulture Exhibits Open
4pm - 10pm - Commercial Exhibits Open
4pm - 6pm - Special Needs Show
4pm - 9pm - Carnival Open - Armbands Available
5:30pm - Mutton Bustin' Registration begins
7pm - Mutton Bustin' - Arena
7pm - Music with Whiplash Renegades
7pm - Little Girl Show

Friday, September 13

9am - 9pm - Home Ec & Horticulture Exhibits Open
4pm - 10pm - Commercial Exhibits Open
4pm - 9pm - Carnival Open - Armbands Available
5:30pm - Round Robin Showmanship; Mutton Bustin' Registration begins
6pm - Teeny Princess, Tiny Princess, Little Princess Pageant
7:30pm - Costume Contest - Livestock arena, Followed by Adult Showmanship
8:00pm - Princess, Junior Princess, Little Miss, Junior Miss Pageant
7:00pm - Mutton Bustin'

Saturday, September 14

9am - 8pm - Home Ec & Horticulture Exhibits Open
12pm - 10pm - Commercial Exhibits Open
4pm - 9pm - Carnival Open - Armbands Available
2pm - Poultry Chain Sale
3pm - Livestock Award Ceremony arena
4pm - Junior Livestock Auction
6pm - Best of Show Photo - (Home Ec Building)
6pm - Mutton Bustin'
7pm - Junior Rodeo
6pm - 9pm - Exhibits Released for Home Ec & Horticulture
7:00 pm - Talent Competition Check-In
8:00 pm - Junior Fair Queen - Fair Queen Pageant
8:00 pm - Talent Competition
8:00 pm - Ms./Sr. Ms. Pageant
9pm - Livestock Exhibits Clean Up Begins /Release to Follow



River Valley news and sports you can rely on by local journalists you know.

Experienced reporting that keeps you informed on River Valley business and community, including Leland Barclay's reports on the River Valley high school sports scene.

Support local journalism.

Scan this QR code with your phone for details.



*iPad must be returned within 30 days of termination of account.

www.thecrawfordcountyfair.com

Mutton Bustin'

(Rodeo Arena)



PRELIMINARY ROUNDS

Thursday, September 12, 2024 – 7:00 p.m.

Friday, September 13, 2024 – 7:00 p.m.

FINALS

Saturday, September 14, 2024 – 6:00 p.m.

(Top 5 from each preliminary round will compete in the finals)

SPONSORED BY:

SIMON FAMILY DENTISRY

Registration Begins at 5:30 p.m. in the Arena
(60lbs weight limit)

www.thecrawfordcountyfair.com



**We are located in the historic downtown
Van Buren. We are a full service title
and closing company.**

Oldest active title company in Crawford County

Hours: 8:00 AM - 12:00 PM

1:00 PM - 5:00 PM

Monday thru Friday

424 Main Street

P.O. Box 426, Van Buren, AR 72957

479-474-2711

***Celebrating 50 years serving
Crawford County!***



TODAY'S BANK

Strong. Stable. Secure.

todaysbank.com

115 Highway 71N
ALMA
479-632-2265

101 S Sebascott
MANSFIELD
479-928-4418

311 N Main St
MULBERRY
479-997-1154

507 N Main St (Drive Thru)
MULBERRY
479-997-1154

111 N Second St
OZARK
479-667-2002

615 E Pointer Trail
VAN BUREN
479-297-6400

and in NWA in Huntsville, Springdale & Fayetteville



www.thecrawfordcountyfair.com

GATE ADMISSION

Tuesday – FAMILY NIGHT

Donatnight

or free admission with a canned good - One per person
(please check expiration date on item, if out of date you will be charged \$1 admission price)

Wednesday - Saturday

Adults \$5.00

Children (5-12yrs) \$2.00

Week Pass - \$12.00

Available at Dickerson's Hardware or at the gate on Tuesday night

Thank you to the local businesses and individuals who volunteered to operate the gate during the Crawford County Fair.

Parking - provided by The Crawford County Mounted Patrol

DEPARTMENT PASSES

Only persons with entries registered by Aug. 15th will receive a gate armband. Due to decreasing state funds for operating our County Fair, the CCFA Board would like your understanding and cooperation with gate armbands. The Supt. of each animal department will submit a list of exhibitors. If armband is lost or left at home, you will be expected to pay admission. Parents and family members must pay admission to enter grounds. There will be two entry gates for paying guests. Commercial exhibitors will be issued two armbands per exhibit booth only. Pageant & Talent Show Contestant will receive a pass good only for date of event. Passes will be dated and are not transferable. Pass / armband must be presented with each entry into fair grounds. **BADGES WILL NO LONGER BE ACCEPTED!**

NO DOGS ALLOWED ON PROPERTY except for service animals.

www.thecrawfordcountyfair.com



**Have You Ever Seen or Heard
Advertising that says,
"Voted Number One?"**



Me and Zack have tried to find out just who was doing all this voting and guess what?...we couldn't find out!

So we decided to take a vote on the BEST TAX OFFICE in Arkansas, guess what?...

**TAX BREAK OF ARKANSAS
IS VOTED NUMBER 1! YAY!!**



Visit our new website: www.TAXBREAKOFARKANSAS.COM

TAX BREAK

Fabian Tompos



Income Tax Preparation

"Working to save YOU Money!"

Next to Braum's Alma, AR

(479) 632-1040

2024 Crawford County Fair

Board of Directors Officers

Jared Williams- Chairman
Brandi Davis - Vice Chair
Jennie Belt - Treasurer
Heather Stacy – Secretary

To all the countless volunteers:

In this moment of gratitude, we extend our heartfelt thanks to all the many volunteers who selflessly dedicated their time and efforts to make the Crawford County Fair a resounding success over its many years and continuing for the 2024 fair. Your service and commitment have been invaluable, and we recognize that without your unwavering dedication, the fair would not have been possible.

GENERAL RULES & REGULATIONS

1. All articles or animals competing must be entered in the name of the grower, maker, or owner.
2. An exhibitor must reside within a Crawford County School District, or have a child enrolled in a Crawford County School or a Crawford County 4-H Program. State law restricts exhibitors from receiving premium money in more than one county fair.
3. Youth (5 years old to fall semester following high school graduation) exhibitors are not allowed to show as a youth at this fair beyond fall semester following high school graduation.
 - a. Entries may not be shown in both youth or open
4. The CCFA reserves the right to reject or accept conditionally any exhibit either before or after entry is made.
5. All entries taken into the fair grounds and buildings are kept entirely at the risk of the owner. A night and day watchman will be on duty.
6. The CCFA will not be responsible for any exhibits remaining at the fairgrounds.
7. Check-out time for exhibits is listed in schedule of events. If exhibit is removed early, the exhibitor will forfeit fair premium checks and will be excluded from showing in the following year. All exhibits must be checked out with superintendent of department.
8. Exhibitors will not be allowed to take any exhibits from the building during or after the close of the fair without first presenting their property check to the superintendent or their assistant, entitling them to exhibits.
9. No premium will be awarded when an exhibit is unworthy, even though there is no competition.
10. Entries or exhibits shall conform to the special rules for the particular department in which it is entered.
11. Decisions of the judges shall be final.
12. All questions in disputes or differences not covered by these rules will be referred to the fair chairman whose decision shall be final.
13. All livestock must have been owned by exhibitor by July 1 of current year.
14. Livestock entered in the Youth Division cannot be entered in the Open Class.
15. **All market animal nominations are due by July 8th. The online entry is available on the showman app.**
 - a. All other online entries must be submitted by August 15th.
 - b. Each exhibitor must have his/her own individual online account.
16. The CCFA will not furnish feed or care for the livestock.
17. Entry fees will be charged - listed by department.
18. Judging times will be posted in barns or see supt. of department.
19. Pens and coops for livestock will be furnished.
20. No transportation charges will be paid by the CCFA.
21. The management reserves the right at all times to have a concessionaire or exhibitor remove objectionable display, etc.
22. All stalls and/or pens must be cleaned daily by 5pm (including poultry). All bedding must be removed before check-out on Saturday night.
23. All breeding livestock entered must have registration papers. If no papers, animal will be shown as commercial breeding stock.
24. An exhibitor may nominate any number of animals per species for the JLA. However, an exhibitor may only bring up to 2 animals of a species to the fairgrounds. (Except rabbits and broilers).
25. Premiums are limited to (2) entries per exhibitor per class and (1) per group class.
26. Livestock supt. may order livestock removed from the fairgrounds and ineligible to participate in any shows or sales based upon a visual inspection and/or veterinarian inspection revealing concerns about the livestock welfare or well being. Such decision shall be in the supt's sole discretion. Final appeal shall be reviewed by Livestock Supt, Fair Mgr, and JLA Chairs.
27. No out-of-county individuals will be allowed to show animals for county exhibitors.

www.thecrawfordcountyfair.com

28. NO DOGS allowed on property except for service animals.
29. **Exhibition chicken and rabbit entries will be assessed a \$1 per head fee. (Example- pen of 3 will be \$3.) All other animal entries (goats, sheep, hogs, and cattle) will be assessed a \$5 per head charge for entry/nomination. All fees are due when nominations are done online via the Showman App.**
30. Youth Herdsman award(s) may be presented in each livestock department based on the following criteria: attitude, conduct, sportsmanship, housekeeping, grooming, and public relations. 1st \$20, 2nd \$15, and 3rd \$10
31. Livestock pens will be assigned by superintendent.
32. Bedding will be provided for pens.
33. No professional fitters; shall not apply to 4H Volunteers, FFA leaders, other Exhibitors and their immediate family (1st level of consanguinity)



GENO'S
PiZZA
BY THE SLICE

479-632-6060
216 Hwy 71 North
Alma, AR

479-452-2914
Central Mall
Fort Smith, AR

COMMERCIAL EXHIBIT BUILDING

Vicki Bare 479-430-6086

September 7-14, 2024

1. Inside or outside - 10x10 space is \$60. Limited electrical outlets are provided. Multiple extension cords and outlets will be the responsibility of the exhibitor. Extension cords must be kept to the minimal length necessary to reach the booth. It is suggested that cords be secured with tape to the floor.
2. Tables, display equipment, and backdrops must be furnished by the vendor. All tables must be skirted or covered.
3. Booth must be reserved and paid for no later than August 1, 2023. After that date, the space will be \$75. Booths are assigned on a first-come first served basis.
4. Organization participation in a donation drawing must have a booth, however, the drawing must be held on the last day of CCFA.
5. No obscene, lewd, or sexually explicit displays will be allowed.
6. No smoking, tobacco, or vaping is allowed inside the commercial building. No Alcohol is allowed on the property of the Crawford County Fair Grounds.
7. The Superintendent has the final decision when questions arise about the appropriateness of a booth.
8. Vendors are responsible for keeping their area clean and free of trash. Please do not place cardboard boxes in trash cans.
9. Vendors are not allowed to solicit outside of booths or on fairgrounds.
10. Each vendor will receive 2 gate bands for entry. Additional gate bands may be purchased at the gate.
11. Only one (1) booth of a type will be allowed, for example: Mary Kay, Scentsy, Paparazzi, etc.

Schedule

Bonus opportunity: Commercial buildings will be open to the public after the fair parade ends. Here's an extra chance to sell your goods. Vendors are welcome to set up early that Saturday morning.

Early Set up: September 9 - Saturday morning (parade will end around noon and the building will open to the public)

Sunday, September - Set Up 1-4

Monday, September 9 - Set up 4pm-7pm

Tuesday, September 10 - Open 4pm-10pm

Wednesday, September 11 - Open 4pm-10pm

Thursday, September 12 - Open 4pm-10pm

Friday, September 13 - Open 4pm-10pm

Saturday, September 14 - Open 4pm-10pm (Booths may tear down after 10:00 on final night.)

Application is available online at: www.thecrawfordcountyfair.com

www.thecrawfordcountyfair.com

FARM EQUIPMENT / VEHICLE EXHIBITS

Jared Williams / 479-414-1074

1. Farm equipment or vehicles will be displayed on the fairgrounds for the entire length of fair.
2. Company displaying equipment or vehicles will be responsible for transporting all that is to be displayed to and from fairgrounds.
3. Company display banner by exhibit.



Be different than your competition.
Don't settle for canned template designs that look like all the rest.
Your company deserves a custom built website to look and
feel like the business you've work so hard to create.
Potential customers want to get a feel of your business
when they visit your site. Quality photography, videos,
and custom graphics can make that happen,
and that's what we love to do. We are here to help
make your site an extension of your business.

Wes Bailey

wesmbailey@yahoo.com

**Official Web Designer for The Crawford County Fair

BREEDEN



5900 Hwy 71 South / Fort Smith, AR

479-646-4731

www.breedendodge.com

Across from the Supercenter on Zero St

BREEDEN



TRUCK CENTER

Breeden RAM Truck Center

2901 Alma Hwy / Van Buren, AR

479-471-3080

www.breedenramtrucks.com



Breeden RV Center

5603 Alma Hwy / Van Buren, AR

479-262-2418

www.breedenrv.com

SHOW RING CODE OF ETHICS

Believing it is in the best interest of breeders of all livestock to maintain a reputation of integrity and to continue to present a wholesome and progressive image in the show ring, the management of Crawford County Fair lists here with those practices which are considered unacceptable in presenting livestock in the show ring. The use of such practices or procedures is, therefore, considered unethical in the showing of livestock at the Crawford County Fair. The Crawford County Fair will follow the National Code of Show Ring Ethics.

1. Misrepresenting the age of the animal for the class in which it is shown.
2. Treating or massaging of any part of the body internally or externally with an irritant, counter-irritant, or other substance to temporarily straighten a weak back or loin or to produce unnatural animation.
3. Minimizing the effects of crampness by feeding or injecting drugs, depressants or applying packs or using any artificial contrivance or therapeutic treatment exempting normal exercise.
4. Striking of any kind performed to change the natural contour or appearance of the animal's body, hide or hair. Not included is the removal of teats or horns, clipping and dressing of hair and trimming of hooves.
6. Insertion of foreign material under the skin.
7. Any attempt to change natural color of an animal, either purebred or crossbred, by changing the color or adding false hair, fleece or skin at any point, spot or area of the animal's body.
8. The use of alcoholic beverages in the feed or administered as a drench.
9. Administration of a drug of any kind or description, internally or externally prior to entering the show ring, except for treating a recognized disease or injury and for tranquilizing bulls that may otherwise be dangerous or females in heat. For the purpose of these rules, the term "legal drug" shall mean any substance, the sale, possession or use of which is controlled by license under federal, state or local laws or regulations and by any substance commonly used by the medical or veterinary professions. The use of any chemical and/or compound that is not approved by the Food and Drug Administration for use in meat producing animals and the illegal use of approved chemicals and/or compounds are prohibited. All animals shall be subject to tests for foreign substances that exceed the acceptable levels established by the United States Department of Agriculture, Food and Drug Administration or the Environmental Protection Agency. **A positive test will result in**

disqualification, forfeiture of any premiums and/or awards and will exclude the exhibitor from future competition at the Crawford County Fair. All medications will be administered by licensed veterinarian.

10. Dress Code: No shorts, sleeveless shirts or open toed shoes are allowed for showing. Long pants and sleeved shirts are required.

11. Balancing the udder by any abnormal means including the use of a mechanical contrivance or the injection of fluid or drugs.

12. Setting the teats and/or occluding (sealing the ends) with a mechanical contrivance or with the use of a chemical preparation.

13. Treating or massaging the udder or its attachments with an irritant or counter-irritant. The use of common products such as fly spray, ointment or liniment in excess to the extent that it is irritating is included as an irritant unless required to reduce edema at time of calving.

14. Criticizing or interfering with the judge, other exhibitors or show officials while attending the Crawford County Fair may result in an individual or group being expelled, placed on probation or declared ineligible at the Crawford County Fair.

15. Any violation of the Rules and Regulations incorporated in this Premium List, the Show Ring Code of Ethics and Youth Division Rules and Regulations may result in forfeiture of all premiums and awards, disqualification, expulsion or other disciplinary action of the Fair Management will be final. Such action will require application for readmission under such terms as the Management may prescribe before the group or individual is allowed to exhibit at future events.

The **Crawford County Fair** reserves the right to have a blood and urine laboratory analysis made for any market animals at the Fair. Any exhibitor administering a drug to an animal which would render the carcass unfit for human consumption or any exhibitor of an animal producing an analysis indicating the presence of an unapproved drug that can result in a quantitative or qualitative change in the characteristic of the animal will be required to return all premium money and could be banned from further competition in the Crawford County Fair. Their name and the lab analysis will be submitted to the USDA for further investigation and possible prosecution. Any animal receiving medication for any life threatening disease or illness must be registered at the time they are entered in the fair.

EXHIBITION HEALTH REQUIREMENTS FOR LIVESTOCK, POULTRY, AND EXOTIC ANIMALS

GENERAL REQUIREMENTS

1. CERTIFICATES OF VETERINARY INSPECTION AND ENTRY PERMITS:

"Certificate of veterinary inspection" refers to a legible record (made on an official form issued from the state of origin) by an accredited veterinarian, which shows that the animals listed thereon meet health requirements of the state of destination. It must bear the identification of each animal and separate certificates must be made for each species of animal entered. Entry permits are required on all out-of-state swine, rodeo bulls, psittacines, passerines, ratites, all other avian species except poultry and turkeys, camelids, or exotic animals. Permits are also required on all cattle entering Arkansas from any state that is not a tuberculosis free state, unless that state has a reciprocal agreement with Arkansas. Permit numbers can be obtained from the state veterinarian's office (501) 907-2400 from 8:00 a.m. - 4:30 p.m. Monday through Friday. A certificate of veterinary inspection must accompany all out-of-state animals; and

- (a) Must be available on request by animal health officials.
 - (b) Individually identify all animals, showing positive identification of each animal by tattoo, ear tag, registration number or ear notch. Steers should be identified by description.
 - (c) Show required tests, vaccinations, and entry permit number, if applicable.
 - (d) Show name and address of owner or exhibitor--this shall be the same name as under which animals are exhibited.
2. Any animal or poultry showing any evidence of infectious or contagious disease, or of external parasitism, and animals with active ringworm lesions (with the resulting loss of hair), multiple warts easily visible without close examination, or atrophic rhinitis, will not be permitted to exhibit.
 3. All animals entering the grounds, including those shown in pet zoos, children's barnyard animals, Old McDonald Farms, etc. must meet requirements of their particular species.
 4. All animals originating out of areas quarantined because of other diseases (vesicular stomatitis, scabies, etc.) shall not be permitted to enter the state.

ARKANSAS LIVESTOCK

COUNTY, JR. DISTRICT, DISTRICT, STATE FAIR LEVEL, AND OTHER SHOWS

1. All animals entering the grounds, including those showing in pet zoos, children's barnyard animals, Old McDonald Farms, etc. must meet the requirements of their particular species.
2. Arkansas livestock {except for Arkansas sheep, goats, horses, steers and rabbits) must be accompanied by a certificate of veterinary inspection issued within ninety (90) days prior to exhibition, showing the following:

ARKANSAS CATTLE

1. If Arkansas is a Class Free State, Arkansas cattle are exempt from brucellosis testing. If Arkansas is not a Class Free State then the following testing requirements must be met:

Negative brucellosis test within ninety (90) days prior to exhibition, for females and bulls eighteen (18) months of age and over. All heifers that have calved or are bred must be tested. Animals originating from a Certified Brucellosis Free Herd are exempt if the Certified Free Herd number is shown on certificate.

2. All heifers that are four to twelve (4-12) months of age shall be vaccinated before entering show.
3. Heifers that were born on or after January 1, 1985, that are over twelve (12) months of age and are not official calthood vaccinates will not be allowed to show (unless they are from a Brucellosis Certified Free Herd.) This will not apply if Arkansas continues as a Brucellosis Free State.
4. All rodeo stock exhibited at a rodeo in Arkansas must meet the out of state requirements for brucellosis and tuberculosis for twelve (12) month and older bulls, roping and dogging steers, and heifers even if the rodeo stock originates from Arkansas. Tie down roping calves are exempt from the tuberculosis testing requirements. The exception is a CVI within the state is good for ninety (90) days instead of thirty (30) days.

ARKANSAS SWINE

1. As of July 1, 2001, all swine must have an official premise identification.
2. Animals six (6) months old or older to be tested negative for brucellosis within ninety (90) days of exhibition or originate directly out of a Validated Herd, with Validation number and date of last herd test shown on certificate (barrows exempt from brucellosis testing, but must be pseudorabies tested.)
3. Animals to be tested negative for pseudorabies regardless of age within ninety (90) days of the exhibition on a test approved by the state veterinarian or originate directly out of a Qualified Pseudorabies Free Herd, with Qualified Herd number and date of last test shown on certificate.
4. Free of other contagious, infectious, and communicable diseases (erysipelas, atrophic rhinitis, etc.); otherwise they will not be allowed to show and will be released from fairgrounds.

ARKANSAS SHEEP AND GOATS

Exhibition officials must maintain records of all sheep and goats that are exhibited for a period of five years, to include:

- a) Identification Number
- b) Flock status as defined by the Voluntary Flock Certification Program
- c) The name, complete address and phone number of the owner.

All instate sheep and goats in the state of Arkansas must be identified by an official USDA tag (scrapie tag) or for goats a legible official goat registry tattoo if accompanied by a registration certificate.

Fair personnel, veterinarians, or state-federal personnel may examine sheep on grounds. Any sheep showing clinical symptoms of Scrapie shall be immediately quarantined in isolation and required to undergo any approved diagnostic tests and shall be consigned to slaughter or destruction with submission of tissues to an approved diagnostic laboratory at the exhibitor's expense.

Commingle (as defined by the Arkansas Scrapie Regulation) of sheep or goats of different flock status as defined by the Voluntary Flock Certification Program (VFCP) is prohibited and must be reported to the VFCP state official and State Veterinarian.

No sheep or goats showing symptoms of disease, particularly foot rot, sore mouth, sheep pox, evidence of fungal infection, evidence of abscesses or with draining abscesses will be allowed to show and may be released by fair officials, veterinarians, or state-federal personnel.

ARKANSAS RABBITS

Rabbits will be inspected on grounds. No rabbits showing symptoms of disease will be allowed to show.

ARKANSAS HORSES

Negative EIA test required within the past twelve (12) months for all animals over six (6) months of age. Nursing foals under six (6) months of age are exempt from testing if accompanied by negative tested dams. Photocopies of the test papers will not be accepted; carbon copies are acceptable.

ARKANSAS CERVIDS

1. Certificate of veterinary inspection.
2. Negative cervical tuberculosis test within ninety (90) days.
3. Negative brucellosis test within ninety (90) days;
4. Or originate from a Certified Brucellosis-Free and Accredited Tuberculosis Free Cervid Herd;
5. Or originate from a Brucellosis-Monitored and a Qualified Tuberculosis Cervid Herd within ninety (90) days of exhibition.

ARKANSAS CAMELIDS

1. Individually identified, and certificate of veterinary inspection within ninety (90) days of exhibition.
2. Registration papers when accompanied by registry photographs of the animal are acceptable identification.

ARKANSAS RATITES

1. Certificate of veterinary inspection.
2. Negative avian influenza test within ninety (90) days.
3. Permanent identification.

ARKANSAS POULTRY

An official representing the exhibition shall notify the state veterinarian no later than thirty (30) days prior to the exhibition, giving names, place, inclusive dates, and time of the event.

The requirements are as follows:

1. All in-state poultry, which includes domesticated game birds, quail, pheasants, peafowl, guineas, and turkeys, present at exhibition in Arkansas shall have originated from U. S. Pullorum-Typhoid Clean or equivalent flocks or have had a negative pullorum-typhoid test within ninety (90) days of the movement to the exhibition (pullorum-typhoid testing on fairgrounds during the fair is prohibited.) This information will be documented on a NPIP Form VS 9-3, 90-Day Certificate, NPIP Flock Certification Form or similar certificate that will accompany the poultry during exhibition.
2. All non-certified birds must be banded (leg or wing band), with a sealed band. Wrap-around plastic bands are not acceptable. In-state waterfowl are exempt from pullorum-typhoid requirements.
3. Any poultry showing evidence of infectious or contagious disease or insect infestation will not be permitted to exhibit.
4. Record Keeping-

The sponsor of the exhibition shall compile a list of all poultry present at exhibition. This list shall contain the name and address of each owner, the number, the species, breed, variety, type, sex, and pullorum-typhoid status of all poultry present. A copy of this shall be retained by the sponsor of the exhibition for at least twelve (12) months.

OTHER IN-STATE TAME OR EXOTIC ANIMALS

Please call State Veterinarian's office for information and permit.

Arkansas Livestock and Poultry Commission Effective: January 3, 2011
Jon Fitch, Executive Director

*Tender Rock
Hollow*



**Buckhorn Knives
Handcrafted by Travis Steele**

antlerhandleknives@gmail.com

PO Box 9
Mulberry, AR 72947

479-997-8068

**Pointer Trail
Animal Clinic**

Mary A. Boone, DVM



113 Pointer Trail West
Van Buren, AR 72956

479-471-8221
Small Animal Health Care

CRAWFORD COUNTY JUNIOR LIVESTOCK SALE

Saturday, September 14, 202

Crawford County Fairgrounds - Livestock Barn Arena

2:00 p.m. - Poultry Chain Sale

3:00 p.m. - Awards Presentation

4:00 p.m. - Livestock Sale

Co-Chairpersons:

Kimberly Simon & Stephanie Brister

Auction Clerks:

Elizabeth Biery - Christopher Boerjan

Patti Stroud - Lillian Bingham

Auctioneer:

Kent Reading

Any interested persons are invited to attend and support the Jr. Livestock Auction. Money donated at the auction goes to support the hard work these youth have put into their projects throughout the year.

JUNIOR LIVESTOCK AUCTION - Rules & Regulations

Chairs: Stephanie Brister 479-790-3630 & Kim Simon 479-414-6445
Saturday, Sept. 14, 2024 / 4:00 p.m.

1. Sale open to youth of Crawford County ages 5 through the fall following high school graduation.
2. All market animals must be nominated by July 13, 2024 and remain in the care of the exhibitor until checked in at the fair. If more than 2 animals are nominated for the fair, exhibitors will only be allowed to bring 2 animals per species nominated for the JLA to the fair and must specify the animals brought during the check-in process to the livestock superintendent. No intact males will be allowed in sale.
3. All exhibitors must stay for sale order. If an exhibitor has a legitimate excuse - sickness, school or church function - he/she must designate with the superintendent for an alternate youth exhibitor to show for sale order for him/her. If no one is present to show a particular animal when called for show order, it will be skipped and will not sell in the Junior Livestock Auction.
4. Sale order will be determined by judges at the conclusion of each show. All animals must show for sale order. A maximum of 20 animals of each market species (lambs, steers, hogs & goats) will be considered eligible to sell at the judge's discretion. Grand, Reserve, or 3rd place Broiler or Fryer pen will also be eligible to sell.
5. Sale weights will be official entry weights.
6. All animals in the sale will be shown naturally. This means no paint, glitter or any other substance.
7. All exhibitors who sold "terminal animals" will be responsible for making sure their animal is placed in the assigned area, after leaving the sale ring, to be loaded on trailers.
8. All animals except broilers and market goats have the option to sell for premium only or in entirety.
(Market goats will sell premium only unless stipulated within fair week due to terminal buyer availability).
Exhibitors are responsible for care and feeding of animals until they are released.
9. An exhibitor may sell only one animal in this auction. ALL GRAND & RESERVE GRAND (lambs, steers, goats, pigs) ANIMALS ARE REQUIRED TO SELL with a choice of premium only or terminal. If an

exhibitor has more than one grand or reserve grand market animal they may choose which animal to sell. Species determination slip must be turned in immediately after exhibitor has shown his/her last animal.

10. All exhibitors are required to deliver an 8x10 framed photo to buyer prior to picking up check. Exhibitor will be required to show proof of delivery to buyer by either a picture with buyer, signed note by buyer, or post office receipt if photo has been mailed.

11. Photography fee will be automatically withdrawn from premium check.

12. Checks will be distributed only at certain dates and times.

13. All exhibitors are required to send thank you notes to all buyers & donors prior to picking up check (dropped off during check pick-up no later than Dec. 1, 2024). All buyers pictures must be delivered by Dec. 1, 2024. If exhibitor does not complete the duties stated above then he/she will not be eligible to participate in the junior livestock auction for 2025 & current check will be voided.

14. The Crawford County Fair reserves the right to have a blood and urine laboratory analysis made for any market animals at the Fair.

15. All terminal animals will be paint branded after complete sale order is determined.

16. All exhibitors must declare premium only or terminal sale choice by conclusion of market show to Stephanie Brister or Kim Simon, or Livestock Superintendents..

***No intact males in all JLA Market Species.

NOTICE: Any exhibitor administering a drug to an animal which would render the carcass unfit for human consumption or any exhibitor of an animal producing an analysis indicating the presence of an unapproved drug that can result in a quantitative or qualitative change in the characteristic of the animal will be required to return all premium money and could be banned from further competition in the Crawford County Fair. Their name and the lab analysis will be submitted to the USDA for further investigation and possible prosecution.

Barn Superintendents

Summary by Species on JLA Market Requirements

<i>Department</i>	<i>Superintendent</i>	<i>Minimum Weight (lbs.)</i>	<i>Maximum Weight (lbs.)</i>	<i>Other</i>
SHEEP	Kirk Beasley 479-652-8000	80	NONE	Must be shown slick shorn to the skin. No wool allowed above the knees or hocks.
HOGS	Sean Brister 479-466-0150	200	300	Hogs will be weighed one (1) time.
GOATS	Jessie Williams 479-208-2751	50	NONE	Must have all baby teeth. Must be less than one (1) year old.
STEERS	Kerry Bob King 479-997-5418	1,000	NONE	Steers will be weighed one (1) time. Must have no permanent teeth in evidence at time of show. No bulls, stags, or horned steers.
POULTRY	Lillian Bingham 479-670-3788	NONE	NONE	Bring broilers the day of judging.
RABBITS	Elizabeth Biery 479-461-1237	2.5	5	No older than ten (10) weeks.

NOTICE: Any exhibitor administering a drug to an animal which would render the carcass unfit for human consumption or any exhibitor of an animal producing an analysis indicating the presence of an unapproved drug that can result in a quantitative or qualitative change in the characteristic of the animal will be required to return all premium money and could be banned from further competition in the Crawford County Fair. Their name and the lab analysis will be submitted to the USDA for further investigation and possible prosecution.



Simon Dentistry

Dr. Jeremy S. Simon

191 Hwy 64 East, Alma

479.430.7049

www.simonfamilydentistry.com

FOOD CONCESSIONS

Vicki Bare 479-430-6086

September 7-14, 2024

Setup: 7th – 10am (optional for events after Fair Parade)

Setup: 8th-9th 12:00p.m. – 6:00p.m.

Operating Hours:

Saturday, September 7, 12:00p.m. – close of events (optional)

Tuesday, September 10, 3:00p.m. – 10:00p.m.

Wednesday, September 11, 3:00p.m. – 10:00p.m.

Thursday, September 12, 3:00p.m. – 10:00p.m.

Friday, September 13, 3:00p.m. – 10:00p.m.

Saturday, September 14, 3:00p.m. – 10:00p.m.

Vendor Cost:

\$350 includes utilities

\$300 no utilities (self-contained)

\$100 deposit due with application - Balance due by August 1, 2024

Rules:

Vendors must be licensed by and meet Arkansas Health Department Rules and Regulations. The license must be posted within sight for public viewing. The County Health Department inspector will be on-site to inspect and issue a temporary license if needed at his/her discretion.

- Vendors are responsible for the payment of sales tax to the State of Arkansas.
 - Vendor pricing must be no less than that of the Carnival concession pricing. Example: Midway Corn Dog \$8, Food Vendor Corn Dog \$8
 - No construction or modification of facilities/fairgrounds in setting up or tearing down.
 - Vendors are responsible for cleaning up their assigned area daily.
 - No product, trash, or other equipment may be stored outside of the food truck, trailer, booth, etc.
 - The Fairgrounds do not have a dump site for grey water; therefore, it is the responsibility of the vendor to dispose of it properly.
 - Vendors must adhere to these operating hours/policies. Failure to do so will forfeit the right to reserve a space the following year.
 - Crawford County Fair Association reserves the right to ask a vendor to leave or deny an application at its own discretion.
 - If you cancel after the deposit/balance is paid, you will forfeit any monies paid unless your application is denied for duplicate items.
 - No subleasing. No sharing of Space.
 - Prior vendors will be given 1st opportunity to return as a vendor.
 - This is a rain or shine event, no refunds will be made.
- Application is available online at www.thecrawfordcountyfair.com

Quality Building Materials

MEADORS LUMBER CO.

Quality Building Materials

Alma
(479) 632-2245

Clarksville
(479) 705-0675

Ozark
(479) 667-9793



Roofing
Restoration
New Construction
Mold Inspection

www.proclaimworks.com

BEEF CATTLE

Superintendents: Kerry Bob King & Reba King 479-997-5418

1. Breed classes will apply to any recognized breed or recorded exotic-cross breed shown separately.
2. An animal is not eligible for competition in both the breeding and market classes.
3. All animals **MUST** be halter broken. They may be screened at any time after July 1st.
4. All bulls 12 months or older must have a nose ring.
5. Commercial heifer and bull classes are available for non-registered stock for youth only.
16. Commercial cow/calf pair is available for non-registered stock. Calf must be under six (6) months of age and nursing cow. (class 19)
6. Special Rosettes will be awarded for the overall Champion Registered Bull, Champion Registered Female, and Champion Commercial Heifer.
7. Health Requirements must be accompanied by a health certificate issued by a veterinarian within 90 days.
8. Commercial heifers must have baby teeth and not be over 2 years old. If over two, must have calf to show in class 19.
9. Calf entered as part of cow/calf pair is cannot be entered as single entry.
10. Points awarded per class - 1st - 15, 2nd - 10, 3rd - 7, 4th - 5, 5th & 6th - ribbon only.

Section A: Open Division

Section B: Youth Division

REGISTERED BEEF HEIFER/COW CLASSES –

(Calved between dates shown)

1. Heifer Calf March-April 2024
2. Junior Heifer Calf January-February 2024
3. Winter Heifer Calf November-December 2023
4. Senior Heifer Calf September-October 2023
5. Late Summer Yearling Heifer July-August 2023
6. Early Summer Yearling Heifer May-June 2023
7. Late Junior Yearling Heifer March-April 2023
8. Early Junior Yearling Heifer January-February 2023
9. Senior Yearling Heifer September-December 2022
10. Two Year Old Heifer May-August 2022
11. Cow-Calf Pair Calf born after March 1, 2024
12. Aged Cow Any age dry female that has previously calved
13. Breed Champion Female (Rosette)
14. Breed Reserve Champion Female (Rosette)
15. Overall Registered Champion Female (Special Rosette)

COMMERCIAL BEEF HEIFER/COW CLASSES

16. Junior Commercial Heifer Broken by weight
17. Overall Commercial Champion Female (Rosette)
19. Cow/Calf Pair Calf born after March 1, 2024

COMMERCIAL BULL CLASSES

20. Junior Commercial Bull Broken by weight
21. Overall Commercial Champion Bull (Rosette)

REGISTERED BEEF BULL CLASSES –

(Calved between dates shown)

21. Bull Calf March-April 2024
22. Junior Bull Calf January-February 2024
23. Winter Bull Calf November-December 2023
24. Senior Bull Calf September-October 2023
25. Late Summer Yearling Bull July-August 2023
26. Early Summer Yearling Bull May-June 2023
27. Late Junior Yearling Bull March-April 2023
28. Early Junior Yearling Bull January-February 2023
29. Senior Yearling Bull September-December 2022
30. Late Two year Old Bull May-August 2022
31. Early Two Year Old Bull January-April 2022
32. Aged Bull Before January 2022
33. Overall Grand Champion Bull (Special Rosette)

MARKET STEER - YOUTH ONLY

1. Youth Exhibitors must nominate steers that they own and care for and that are to be shown in the fall show by required JLA deadline.
2. Steers have a 1,000 lbs. minimum weight requirement for the JLA. Each steer will only be weighed once. Steers weighing between 901-999 will be shown for premium only – not eligible for auction.
3. Steers may have no permanent teeth in evidence at time of show.
4. No bulls, stags, or horned steers may be exhibited in this class.

MARKET STEER CLASSES

Classes divided by weight

Grand Champion Buckle & Special Rosette

Reserve Grand Champion Buckle & Special Rosette

FEEDER STEERS - YOUTH ONLY (Special Rules)

Weigh In - July 13th, 8-10am at the Fair Grounds

1. Feeder steers must weigh under 900 lbs at weigh-in at fair.
2. All steers must be nominated and identified (either directly with supt. or through JLA). Nomination fee is \$5/head to be paid when nominated.
3. All breeds will be shown together and classes will be divided by weight.
4. All steers must be weaned, dehorned and shown slick-sheared or wet. Those steers that were clipped previously must be shown as wet.
5. All steers must be castrated at least 30 days prior to County Fair.
6. Final Selection will be based on total points:
Class Placing: 40% Showmanship: 20% Average Daily Gain: 40%
Champion Special Rosette
Reserve Champion Rosette

BOTTLE CALF

CLASS COMBINED - SEE ITEM 1 BELOW

1. Must be entered in heifer class (registered or commercial), feeder steer, bull class (registered or commercial).

CRAWFORD COUNTY CATTLEMEN'S ADDITIONAL PREMIUMS

Cattle projects exhibited at the Crawford County Fair shown by a qualified youth are eligible, on completion of application and certification, for additional premiums sponsored by the Crawford County Cattlemen's Association for county born animals. To qualify for their premiums, the applicant must be a current member of AR Cattlemen's Association or AR Junior Cattlemen's Association or have a parent or grandparent that is a current member of AR Cattlemen's Association.

For more information, call Jeff Cluck at 479-208-0257.

Round Robin Showmanship Contest

Superintendent: Heather Stacy 479-228-8269

SHOWTIME: Friday, September 13, 2024 at 5:30pm

Location: Main Show Ring

AWARDS:

Buckles will be awarded for 1st Place in both age divisions

Ribbons will be awarded for 2nd - 5th Place

AGE DIVISIONS: Junior (Ages 9-13) Senior (Ages 14-19)

SCORECARD:

Contestants will be ranked against other exhibitors in their age division. Tie breakers are decided with the most number of 1st's, 2nd's, etc. If a tie still exists, then the tie will be broken by the best score in knowledge.

CATEGORIES:

Sheep - Cattle - Dairy Goat - Swine - Meat Goat - Attire & Knowledge

RULES:

1. If the first place individual is unable to attend - second place winner will step in as the department/division representative.
2. Exhibitor is expected to wear appropriate attire. No shorts/no t-shirts.
3. If participant wins the showmanship division in more than one dept., that individual must declare which dept. they will represent.
4. Regarding #3 - Participant must notify the supt. of dept. that he/she will not be representing. Second place winner will be substituted.
5. Animal may be substituted only at discretion of the Round Robin Superintendent.
6. Contestants will be questioned at the discretion of the judge.
7. Junior contestants are responsible for finding animals for contest. If the contestant is not able to find an animal for contest, contact the Supt. to assist in the task.
8. No coaching from audience - this can result in point deduction or disqualification of contestant.

SHEEP DEPARTMENT

Superintendent: Kirk Beasley (479)652-8000

1. Sheep will be inspected when they are unloaded with blankets removed. Any sheep/lambs with weeping eyes, runny nose, diarrhea, wool fungus, foot rot, sore mouth, sheep pox, scrapie or other communicable disease as deemed by the committee or veterinarian will be refused unloading privileges. Sheep/lambs greater than 3 months of age must be able to be led from trailer to pen by one person or will be sent home. All sheep must have scrapie identification.
2. Registration Papers: The original registration certificate is required for all animals six months of age or older and this **MUST** be shown to the supt. at designated time. The original registration certificate application stamped by the registrar's office is required for all animals under six months of age. Animal must be in youth or family member name. If you do not have registration papers, it is considered commercial.
3. Breeding classes are for ewes and rams, market is for wether or ewes only. Ewe lambs may be shown in both breeding and market classes.
4. Group Classes: All group classes of a breed must be made up of only those animals that have been shown in the individual classes of that breed in this show.
5. Arena Promptness: Exhibitors are responsible for knowing the times at which their animals will be judged. Any animal not presented promptly will be ruled ineligible and barred from competition in the class. No complaint of protest on grounds that the judge overlooked animals will be considered.
6. Points for all divisions of Sheep/Lambs are as follows: 1st - 7, 2nd - 5, 3rd - 3, 4th - 1.
7. Bedding will be provided by the Fair.
8. Sheep will be weighed dry and without blanket.
8. **Entry fee: \$5/head and due at time of entry.**

REGISTERED BREEDING SHEEP (born between dates shown)

1. Aged Ram Before Sept 2023
2. Yearling Ram Sept 2022 - Aug 2023
3. Fall Ram Lamb Sept 2023 - Dec 2023
4. Spring Ram Lamb Jan 2024 - Aug 2024
5. Pair of Ram Lambs
6. Champion Ram (From Class 2, 3, & 4) Rosette
7. Reserved Champion Ram Rosette
8. Aged Ewe Before Sept 2022
9. Yearling Ewe Sept 2022 - Aug 2023
10. Pair of Yearling Ewes
11. Fall Ewe Lamb Sept 2023 - Dec 2023
12. Spring Ewe Lamb Jan 2024 - Aug 2024
13. Pair of Ewe Lambs
14. Champion Ewe (From Class 9, 11, & 12) Rosette
15. Reserve Champion Ewe Rosette
16. Best Pair (both sexes represented - not including aged)
17. Junior Flock (1 ram & 2 ewe lambs)
18. Pen of Four (both sexes represented - not including aged)
19. Exhibitors Flock (1 ram, 2 yearling ewes, & 2 ewe lambs)

COMMERCIAL SHEEP (further divided by weight)

1. Ewe Lambs
2. Yearling Ewe
3. Aged Ewe
4. Champion Commercial Ewe Rosette
5. Ram Lamb
6. Yearling Ram
7. Aged Ram
8. Champion Commercial Ram Rosette

MARKET LAMB ADDITIONAL SPECIAL RULES

1. Minimum weight is 80 lbs to be eligible for JLA.
2. Only top twenty market lambs are eligible to sell in JLA. Actual number of lambs in sale will be up to judge when placing sale order. Animals must show for sale order.
3. All wethers must be castrated at least 30 days prior to county fair.
4. Muzzles are allowed on lambs - hard or soft.
5. All market lambs must be weighed dry and without blanket.
6. \$5/head nomination fee - due at time of nomination.

MARKET LAMB CLASSES

1. Market Lambs (minimum 80 lbs) divided according to weight and breed
2. Grand Champion Buckle & Special Rosette
3. Reserve Grand Champion Buckle & Special Rosette

PIZZA DEN

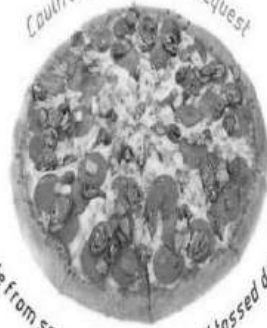


CHECK US OUT ON



DRAGON FIRED PIZZA
1816 Highway 71 NE
Mountainburg, AR
479-369-0131

Cauliflower Crust Upon Request



Made from scratch PIZZA from hand tossed dough



DELICIOUS HOAGIES

WINGS

SHRIMP, CHICKEN, CATCH OF THE DAY

Fresh SALADS

*Hand Dipped
Ice Cream**



CALZONES

SWINE DEPARTMENT

Superintendent: Sean Brister 479-466-0150

1. After market animal nominations, swine superintendent may visit farm to verify and tag entries.
2. All purebred breeding stock must have registration papers in exhibitors name. Gilts may be shown in both breeding and market classes. Must register and pay entry fee for each.
3. Each hog will be weighed one time. No variance on weights. Market hogs under 200 lbs and over 300 lbs will show for premium only and are NOT eligible for the JLA. During weigh in time, exhibitor must be with their animal and ready to get weighed. If unable to be there during this time please let the supt. know or you will be skipped and unable to show. It is the responsibility of the exhibitor to have their animal's health papers inspected and weighed in at the required time. Hogs cannot be weighed until weigh-in starts at 6pm - the scales will not be brought to barn until then. Weight from market class will be used for commercial breeding gilt class. Registered gilts will show by age.
4. All swine must be test negative for brucellosis and pseudorabies and must have a current health certificate, issued within 90 days of exhibition. A negative test is not a health certificate. See Exhibition Livestock Health Requirements for County Fairs.
5. For more rules and information, please see the JLA/Market Animal Section under General Rules.
6. Water hoses are to be kept in the wash rack area only, for respect of other exhibitors they cannot be in the hog pens at any time. All animals must be fed daily and pens must be cleaned daily by 5:00pm.
7. All exhibitors must be in the hog barn during show time and must stay for sale order. We will call your name 3 times, then skip over you.
8. During show and sale times the hog barn must be cleared out of all people, each exhibitor family can have one helper. We will need volunteers to stand in hog alley way in show barn, at each gate entrance during show and sale times to keep the area cleared out.

9. If you have hogs entered but know in advance that you will not be able to bring some or all, please notify the supt. ASAP. We only have a certain amount of pens and need to know how to set them up.

10. Points awarded per class - 1st - 15, 2nd - 10, 3rd - 7, 4th - 5, 5th & 6th - ribbon only.

Registered Gilt/Boar / Purebred / Heritage

The following classes will apply to any recognized breed shown separately:

CLASS

Senior Yearling Boar Pig Sept 1, 2023 - Oct 31, 2023

Junior Yearling Boar Pig Nov 1, 2023 - Dec 31, 2023

Senior Spring Boar Pig Jan 1, 2024 - Mar 31, 2024

Junior Spring Boar Pig April 1, 2024 - May 31, 2024

Champion Gilt/Boar Rosette

Reserve Champion Gilt/Boar Rosette

Overall Grand Champion Gilt/Boar Rosette

Commercial Gilt (shown by weight) Jan -April 2024

Market Hog (200-300lbs) Points: 7 5 3 1

Grand Champion Market Hog Belt Buckle

Reserve Grand Champion Market Hog Belt Buckle

Market Hog (under 200 lbs & over 300 lbs) Points: 7 5 3 1

DAIRY CATTLE

Superintendents:

Kerry Bob King 479-997-5418 & Jared Williams 479-414-1074

CLASS

Baby Bull Calf July 2024 - Sept 2024

Bull Calf Jan 2024 - June 2024

Junior Yearling Bull July 2023 - Dec 2023

Grand Champion Bull Rosette

Reserve Champion Bull Rosette

Baby Heifer Calf July 2024 - Sept 2024

Spring Heifer Calf April 2024 - June 2024

Junior Heifer Calf Jan 2024 - March 2024

Intermediate Heifer Calf Oct 2023 - Dec 2023

Senior Heifer Calf July 2022 - Sept 2023

Junior Yearling Heifer March 2023 - June 2023

Intermediate Yearling Heifer Nov 2022- Feb 2023

Senior Yearling Heifer July 2022- Oct 2022

Two-Year-Old Heifer *NF Jan 2022 - Sept 2022

Junior Champion Female Rosette

Junior Reserve Champion Female Rosette

Two-Year-Old Cow *F Jan - Sept 2022

Three-Year-Old Cow Jan - Dec 2021

Four-Year-Old Cow Jan - Dec 2020

Aged Cow Born before Jan 1, 2020

Dry Cow **See Rule 7

Senior Champion Female Rosette

Senior Reserve Champion Female Rosette

Grand Champion Female Rosette

Showmanship Plaque

1. See General Rules and Regulations.

2. The following classes will apply to any recognized dairy breed shown separately. No beef breeding allowed.

3. Cattle MUST be halter broken.

4. Youth Herdsman Awards will be presented in the Dairy Cattle Dept.

Criteria for these awards will include attitude, conduct, sportsmanship, housekeeping, grooming, and public relations. This

includes time elapsed from check-in until check-out, not including regular school hours.

5. Entry fee \$5/head due with entry.

6. *NF - Never Freshened *F - Freshened

7. Dry Cow - any age, not in milk, must have completed at least one lactation.

8. All youth division dairy exhibitors will receive an award for showing one or more dairy animals.

Awards will be sponsored by DeShazo Ranch.

9. Points awarded per class - 1st - 15, 2nd - 10, 3rd - 7, 4th - 5, 5th & 6th - ribbon only.

Section A: Open Division

Section B: Youth Division



Crabtree Farms & Produce

Locally
Grown

1434 Alma Drive Alma, AR
479-632-6069



ozark.recruit@atu.edu
(479) 508 - 3303

A Future Beyond the Classroom

Arkansas Tech university - Ozark Campus is dedicated to quality workforce education. Our roots run deep in the Natural State - we have a proven history of providing programs that meet the emerging needs of the state's industries and economy. You can expect us to support you as you work towards your desired credential or degree.

CALL US TODAY TO SCHEDULE YOUR VISIT!



Bistro
Special
Events
Gift Shop

523 Hwy 71
Mountainburg, AR
(210) 776-8970

<https://www.facebook.com/UptownFrillsBistroAndSpecialEvents>



Bench Building Contest

Rules:

1. Open to all 4-H and FFA chapters in Crawford County. Multiple entries from a club/chapter will be accepted if built by different members.
2. Benches may be built from any material or combination of materials and should be large enough to seat two adults comfortably.
3. Benches must be decorated so that they may easily be identified as to which chapter/club and members they were built by.
The year they were built must also be displayed on the bench.
4. Benches must be able to be placed on grass or soft dirt and not sink.
5. Benches must be able to withstand the weather as benches will remain on the fairgrounds for us in future years.
6. Entries must be on the fairgrounds by Friday, September 6, 2024, as they will be placed for use during the fair. Benches may be dropped off earlier; all deliveries must be coordinated through Jared Williams by calling/texting 479-414-1074
7. There will be a people's choice booth setup nightly during the fair. Each participating club/chapter will be responsible for manning the booth a minimum of once during the fair (must include one adult representative.) A laminated picture of each entry is recommended for display at the People's Choice Booth. Jared Williams will coordinate the scheduling of the booth.
8. Money collected from the People's Choice Booth will be awarded at 50% to the Grand Champion Bench, 25% to the Reserve Champion Bench, and 25% to the fairground improvement and maintenance fund.

Dickerson's Hardware Inc.



guns & ammo
we buy - sell - trade

complete water systems
pumps - tanks - pipe

stihl chain saws
chains - bars - etc.

auto & tractor parts

997-1574 or 997-1025
Hwy 215 - Mulberry, AR

Goats

Superintendents: Heather Stacy 479-228-8269, Jessie Williams 479-208-2751

Entries might be limited according to capacity of barns available. Entries will be accepted in order of receipt when accompanied by entry fee.

Rules: (see general rules also)

1. Registration Papers - The original registration certi_cate is required for all animals six months of age or older and this MUST be shown to the supt. at designated time. Original registration certi_cate or duplicate application stamped by the registrar's o_cce is required for all animals under six months of age. Animal must be in youth or family member name. If you do not have registration papers - it is considered grade.
 2. Age - The base date for computing the age of the animal shall be Sept. 1, 2023.
 3. Group Classes - All group classes of a breed must be made up of only those animals that have been shown in the individual classes of that breed in this show.
 4. Milk out (dairy) - There will be NO pre-show milk out, but over uddering will be frowned upon.
 5. Pens will be assigned. Aisle ways must not be blocked. Must be cleaned and approved by Supt. before leaving Saturday night.
 6. Tattoos: All registered dairy goats entered in the show must have a tattoo. If not registered or no tattoo, it must have a scrapies tag.
 7. Exhibitor must be able to lead and maintain control of goat. Goat must be shown in chain, collar, or halter.
Breeding - collar/chain.
 8. Exhibitor should be able to lead and maintain control of goat. Goat must be shown in chain or collar.
 9. Points for premium: 1st 2nd 3rd 4th
Premium A 7 5 3 1
Premium B 5 3 1
No more than 2 premiums/individual class or 1 premium/group class
- SPECIALS

DAIRY GOATS

Dairy Goats (Alpine, Guernsey, Lamancha, Nigerian Dwarf, Nubian, Oberhasli, Recorded Grades, Sable, Saanen,

Toggenburg, Mini Dairy, Grade Dairy)

Groups (Limit to one entry pre exhibitor, offered for Junior and Senior does)

Get of sire: To consist of 3 does, the get of one sire. Sire must be named

Product of Dam: To consist of 2 does, the daughters of 1 dam. Dam must be named

Best 3 Females: To consist of 3 does, all owned by exhibitor

Dam and Daughter: Each entry must consist of one dam and on daughter. Both animals must be senior does

Diary Herd: To consist of four does in milk, all owned by one exhibitor

KIDS AND DRY DOELINGS

1. Junior Kid born April 1, 2023 or later Premium A
2. Intermediate Kid March 1, 2023 to March 31, 2023 Premium A
3. Senior Kid January 1, 2023 to February 28, 2023 Premium A
4. Junior Yearling May 1, 2022 - December 31, 2022 Premium A
5. Senior Yearling September 1, 2021 - April 30, 2022 Premium A
6. Grand Champion Junior Doe Rosette
7. Reserve Grand Champion Junior Doe Rosette
8. Junior Get of Sire Premium B
9. Junior Produce of Dam Premium B
10. Best Three Junior Does Premium B

DOES IN MILK

1. Yearling Milker Under 2 years Premium A
2. 2 year old Milker Premium A
3. 3 year old Milker Premium A
4. 4 year old Milker Premium A
5. 5 & 6 year old Milker Premium A
6. 7 & older Milker Premium A
7. Grand Champion Senior Doe Rosette
8. Reserve Grand Champion Senior Doe Rosette
9. Get of Sire Premium B
10. Produce of Dam Premium B
11. Dam and Daughter Premium B
12. Best Three Senior Does Premium B
13. Dairy Herd Premium B

BEST OVERALL JUNIOR DOE IN SHOW Rosette

BEST OVERALL SENIOR DOE IN SHOW Rosette

FIBER GOATS - (Must be shown in full fleece - either Angora type or Cashmere type)

1. Junior Doe - less than 1 year age
2. Senior Doe - Over 1 year of age
3. Grand Champion Doe
4. Reserve Champion Doe Special Rosette
5. Fiber Wether Rosette

BREEDING MEAT GOATS - (Boer - full blood & percentage, Kiko, Tennessee, Myotonic, Pygmy, Kinder / Commercial - if no registration papers)

1. Doe Kid 0 - under 3 months
2. Doe Kid 3 - under 6 months
3. Doe Kid 6 - under 9 months

4. Doe Kid 9 - under 12 months
5. Junior Division Champion Rosette
6. Junior Division Reserve Champion Rosette
7. Yearling Does 12 to under 16 months
8. Yearling Does 16 to under 20 months
9. Yearling Does 20 to under 24 months
10. Yearling Division Champion Rosette
11. Yearling Division Reserve Champion
12. Two year old Does - 24 to under 36 months
13. Aged Does - 36 plus months
14. Senior Division Champion Rosette
15. Senior Division Reserve Champion Rosette
16. Breed Champion Rosette
17. Best Pair of Junior Does
18. Best Pair of Yearling or Senior Does

Meat Goat Buck Classes

- 19.. Junior Kid May 1, 2023 or later Premium A
 20. Intermediate Kid March 2023 Premium A
 28. Senior Kid January- February 2023 Premium A
 29. Yearling Buck Born 2022 Premium A
 30. Older Buck Born 2021 or earlier Premium A
 31. Breed Champion Rosette
 32. Breed Reserve Champion Rosette
- Overall Breeding Meat Goat Champion Special Rosette

MARKET GOAT ADDITIONAL SPECIAL RULES

1. Minimum weight is 50 lbs. to be eligible for Jr. Livestock Auction.
2. Top twenty market goats are eligible to sell in Jr. Livestock Auction. Actual number of goats in sale will be up to judge when placing sale order. Animals must show for sale order.
3. All wethers must be castrated at least 30 days prior to county fair.
4. Muzzles are allowed on Market goats - hard or soft.
5. Weigh In - it is the responsibility of the exhibitor to have goats inspected and weighed by required deadline.
They must be dry. No blankets allowed at weigh in - only show halter or chain. Market goats must have a full mouth of baby teeth with no signs of permanent teeth.
6. All market goats must be disbudded or have horns tipped or rounded (tip not smaller than a dime).
Goats with horns deemed unsafe by superintendent will be required to be tipped.
7. Each exhibitor may enter only two (2) in market goat show.
8. Entries in Market Goat classes are open to wether goats and does. NO BUCKS allowed in market classes (see buck show).

MARKET GOAT CLASSES

1. Market (will be further divided by weight)
2. Grand Champion Market Buckle & Special Rosette
3. Reserve Champion Market Buckle & Rosette

POULTRY & LARGE FOWL SHOW

Superintendent: Lillian Bingham (479) 670-3788

1. All poultry, which includes games birds, guineas, quail, pheasants, peafowl, and turkey shall have originated from a US Pullorum clean flock or have had a negative Pullorum test within 90 days of entry. Waterfowl are exempt from testing. See health regulations under General Rules. In the event any bird exhibits signs of disease or sickness, the Supt. has the right to have the birds removed from the premises.
2. This department will be conducted under the rules of the American Poultry Association. Birds will be judged by comparison method according to the American Standard of Perfections latest edition. **BREED MUST BE IDENTIFIED ON ENTRY FORM.**
3. Feed will be furnished. **Exhibitors are responsible for feeding and watering their own birds during the fair.**
4. Birds must be mature. Definition of terms:
 - a. Cock/Old Tom/Drake/Old Gander - male over one year of age
 - b. Hen/Old Hen/Hen/Goose - female over one year of age
 - c. Cockerel/Young Tom/Young Drake/Young Gander - male under one year of age
 - d. Pullet/Young Hen/Young Hen/Young Goose - female under one year of age
 - e. Young trio - Cockerel and two pullets
 - f. Old trio - Cock and two hens
 - g. Pen of 3 - Three broilers or poultry chain birds other than those entered in other class
5. The Grand Champion pen of broilers will sell in the Junior Livestock Auction. **ONLY BIRDS PROVIDED THROUGH THE COUNTY EXTENSION OFFICE ARE ELIGIBLE.**
6. Poultry chain birds entered by Extension Office will sell in the Poultry Chain auction on Saturday. Exhibitors are responsible for finding their own buyers. **No premiums paid on this entry.**
7. Exhibits can be brought to fair grounds between 10am-8pm on Monday. Check out time will be 9pm on Saturday, except poultry chain birds sold in the auction. Exhibitors removing birds early will not be allowed to show the following year.
8. Birds entered in one class cannot compete in another class.
9. Broilers are to be in place Tuesday by 9am to be judged. The Grand Champion broilers will need to be brought back on Saturday for the Junior Livestock Auction.
10. All birds not claimed Saturday at dismissal will be removed at the discretion of management.
11. **Entry fee is \$1.00 per bird. Trio - \$3.00.**
12. Bedding will be provided by the fair
13. **All pens are to be clean/dressed daily**

ALL POULTRY EXCLUDING WATERFOWL, PRESENT AT EXHIBITIONS IN ARKANSAS SHALL HAVE ORIGINATED FROM US PULLORUM - TYPHOID TEST WITHIN 90 DAYS OF THE MOVEMENT TO THE EXHIBITION.

Section A: Open Division (under 5, over 18)

Section B: Junior Division (5-18)

CLASS:

1. Cock/Old Tom/Drake/Old Gander
2. Hen/Old Hen/Hen/Goose
3. Cockerel/YoungTom/Young Drake/Young Gander
4. Pullet/Young Hen/Young Hen/Young Goose
5. Young trio
6. Old trio
7. Pen of 3 Broilers (youth only)
8. Pen of 3 Poultry chain (youth only)
9. Best young trio
10. Best old trio
11. Class winners
12. Best large fowl, bantam, duck, goose, turkey
13. Champion Broiler
14. Champion Poultry Chain
15. Reserve Champion Poultry Chain
16. Herdsman awards of \$20, \$15, and \$10 can be awarded at the discretion of Poultry Superintendent. Criteria for these awards will include attitude, conduct, housekeeping, and assisting the supt. (sweeping, gathering eggs, barn cleanliness, feeding and watering of their birds, etc).

A + COMPUTER

Repair



Specializing in affordable residential computer repair
Troubleshooting - Repairs - Virus Removal
Spyware Removal - Data Backup - Data Recovery
Custom Builds - Network Setup - Consulting
- PICKUP AND DELIVERY AVAILABLE -

479-997-5724

Steve Morse
Owner

www.thecrawfordcountyfair.com

Crawford County Hay Show

Tuesday, September 10, 2024

6:30p.m. Meal & Education Program

Entry Fee: \$8.00 per sample

RULES AND REGULATIONS:

1. Each class entry shall contain a representative sample of hay produced in Crawford County by the contestant.
2. Hay samples are due no later than 4:30pm on Wednesday, August 14th, at the Crawford County Extension Office located at 105 Pointer Trail West in Van Buren.
3. Deliver a core sample and visual sample of your hay to the Extension Office by entry deadline.
4. Only core samples taken with an approved forage/hay probe will be accepted for chemical analysis in the Crawford County Hay Show. Hay probes are available to be checked out at the Extension Office if the producer does not have access to one.
5. Crawford County hay samples should include: Approximately one-half pound core sample hay, and a one (1) gallon ziplock bag full of loose hay to be used as a visual representation of analyzed hay.
6. No grab or loose samples will be accepted for analysis in the Hay Show. Grab or loose samples will only be utilized as a visual sample to be viewed at the hay show.
7. Entries will be displayed at the Crawford County Fair, samples will be displayed using an assigned number to be provided by hay show coordinator. No names or other identification will be displayed on the representative sample.
8. An educational meeting will immediately follow the meal.
9. Samples will be ranked using visual examination (totaling 50 points) and laboratory analysis using the Relative Feed Value score (totaling 50 points).
10. Entry fee is \$8.00 per sample.
11. Awards will be given in the following categories:
Legume / legume grass mixes
Mostly warm-season grasses
Mostly cool-season grasses
12. All exhibits will be destroyed at the conclusion of the Crawford County Fair.
13. For questions, call the Crawford County Extension Office at 474-5286.

The Hay Show is open to all Crawford County hay producers at a minimal cost of \$8.00 per sample. The purpose of the hay show is to encourage producers to test his/her hay to determine the nutritional content of the product they produce. All Crawford County producers are encouraged to attend.

RABBITS

Superintendent: Elizabeth Biery (479) 461-1237

Rules:

1. Exhibitors must be present to show rabbits or make other arrangements for showing with Supt.
2. The Fair management reserves the right to refuse entry to the show and to remove from the show all diseased (including ear mites), sick and/or unsightly specimens.
4. Cage space is limited and will be limited to the first entries received.
5. Exhibitors will be limited to 2 rabbits per class - per breed.
6. Judging will be in accordance with breed standards established by ARBA. However, this is not a sanctioned show.
7. All rabbits will be shown by breeds. Classes will be provided for all recognized breeds. All crossbreeds will be shown together.
8. All rabbits must be legibly tattooed or tattooed w/permanent marker.
9. Rabbits will not be placed if deemed unworthy by judge.
10. Champion Fryer Rabbit will receive a Buckle and eligible to be sold in the JLA. All market/fryer rabbits need to be nominated to the JLA by the nomination deadline.
11. 1st, 2nd, 3rd place rabbits will be eligible to be sold in the JLA.
12. Rabbits will be placed for sale order - top eligible rabbit will be in JLA.
13. Supt. will not be involved in the selling of rabbits by exhibitor.
14. All rabbits must stay at fair all week to receive check. No exceptions!
15. Bedding under cages will be provided by Fair.
16. Points awarded per class - 1st - 3, 2nd - 2, 3rd - 1, 4th, 5th, & 6th - ribbon only.

CLASS

Senior Buck Over 6 months old
Senior Doe Over 6 months old
Junior Buck 6 months and younger
Junior Doe 6 months and younger
Mixed Breed 6 months and younger
Best of Breed Rosette
Best of Opposite Sex Rosette
Reserve Overall Rabbit Rosette
Fryer Rabbit Rosette
Reserve Fryer Rabbit Rosette
Champion Fryer Rabbit Rosette & Buckle

**Fryer rabbit is one that is not over 10 weeks of age and not weighing over 5 lbs or less than 2 1/2 lbs. All breeds will show against each other, and 1st place will be determined by meat value.

Section A: Open Division

Section B: Youth Division

TALENT COMPETITION

Date: September 14, 2024

Location: Kirksey Park / Stage Area

Time: Check-in at 7:00 / Competition begins at 8:00

(Will be held in conjunction with the pageant)

Entry Fee: \$25

Deadline: Aug 31st, 2024 by 5:00pm

Divisions:

Youth – Ages 5-13

Senior – 18-23

Junior – Ages 14-17

Adult – 24 & Up

RULES:

1. A contestant must be a resident of Crawford County for six months before the competition.
2. Youth Division, Jr Division, Sr Divisions: Contestants must never have been convicted of any crime or have any pending criminal charges: married, divorced, or have children.
3. Adult Division: Contestants must never have been convicted of any crime or have any pending criminal charges.
4. All acts must not exceed 3 minutes! Exceeding the limit will result in a point deduction.
5. Accompaniment may be submitted on CD or USB. No phones, iPad, MP3 players, etc., can be used for music.
6. Props are highly discouraged due to time limits unless part of the act.
7. Contestants can only compete in the county/district/region competition and win the Competition sanctioned by the county/district/region in which they legally reside.
8. Former Grand Champion winners at the State Fair Level are only eligible to compete again once they move up to the next age division.
9. If the winner cannot attend the competition at the State Fair, the director may send the 1st Runner Up or an appointed person.
10. Any display of poor sportsmanship is not allowed. This will lead to disqualification.
11. Non-winners of the Crawford County Fair Talent Competition can compete in the District/Regional competition or go as an At-Large contestant in the State Fair competition. There is a fee to enter as an At-Large contestant at the State Fair \$40.
12. No refunds once the entry form and payment have been submitted.

13. YOU CANNOT COMPETE IN BOTH TALENT AND PAGEANT; YOU MUST CHOOSE ONLY ONE!

Vocal Solo: shall consist only of a vocal performance by one vocalist. The self-accompaniment vocalist will be judged on vocals only.

Vocal Group: shall consist of two or no more than ten vocalists. No other talent may be performed.

Variety: shall consist of one or no more than 10 people. Juggling, ventriloquism, magic, comedy routines, etc.

Due to limited space on the stage, we do not allow dance divisions.

Entry form is available online at: www.thecrawfordcountyfair.com



Attorneys At Law

MEDLOCK & GRAMLICH, LLP

Attorneys At Law

Family Law * Domestic Relations * Divorce * Criminal Defense
Medical Malpractice * Auto Accidents * SS Disability * Personal Injury
Wrongful Death * Real Estate * Railroad Injuries

"Put Us To Work For You"!



Jered Medlock

105 N 14th St
P.O. Box 2646
Fort Smith, AR 72902
Phone: 479-494-5614
Fax: 479-802-4742



Lucas Gramlich

910 Broadway
P.O. Box 328
Van Buren, AR 72957
Phone: 479-474-1117
Fax: 479-358-9799

www.fortsmithlawfirm.com

Crawford County Fair Youth Pageants

Ages 2 yrs old - 13 yrs old

Thursday, September 12th, 7:00 PM

Friday, September 13th, 7:00 PM

Contestants need to check-in by 6:00 PM

Kirksey Park - Stage Area

Mulberry, Arkansas

Entry Fee: \$50

Deadline to Enter: August 31, 2024

NEW THIS YEAR: Registration will be online. Please visit the Crawford County, Arkansas Fair Pageants page on Facebook for the link to the registration form.

Each contestant is encouraged to ride in the Crawford County Fair Parade.

- Saturday, September 7, 2024, 11:00 AM

Practice (Optional): Contestants may practice on stage and visit with the directors of the fair pageants.

- Stage area at the fairgrounds.
- Saturday, September 7 following the parade.
- 12:30 PM - 1:30 PM
- Contestants are encouraged to practice at home after they see the layout of the stage.

Division	Ages	Date / Time
Little Princess	2 - 4 years old	Thursday, September 12, 6:30 PM (Crowning to follow)
Princess	5 - 6 years old	Friday, September 13, 7:00 PM
Jr Princess	7 - 8 years old	Thursday, September 12, 7:00 PM
Little Miss	9 - 10 years old	Thursday, September 12, 7:00 PM
PreTeen Miss	11 - 13 years old	Thursday, September 12, 7:00 PM

Attire for each division will be formal/evening gown only.
The other divisions on Thursday, September 12 will be announced after the PreTeen Miss Division

Attire for Youth Pageant Contestants

All contestants (including photogenic photos) will be scored on the following according to her respective age division:

- appropriateness of dress
- appropriateness make-up
- appropriateness of hairstyle

Rules for Crawford County Youth Pageants

1. Contestants **MUST** be a resident of Crawford County for at least 6 months prior to the pageant.
2. A winner of a title may not compete in the same division in which she holds or held the title.
3. A winner, 1st Runner-Up, and 2nd Runner-Up will be awarded in each division.
4. Judges' decisions are final.
5. Winner is expected to attend the next year's pageant to crown the new title holder and participate in the annual fair parade
6. All contestants are encouraged to participate in the annual fair parade to be held on Saturday, September 7, in downtown Mulberry. Line up will begin on Church St (turn by the Dairy Dip) and continue down the street. Pageant contestants will line up behind those already in line. You must provide your own transportation and signage. You **ARE** allowed to throw candy.
7. Dressing rooms will be provided, however, due to limited space please come with hair and makeup stage ready.
8. **ONLY** contestants are allowed backstage. (there will be ladies backstage to assist with the contestants)
9. A contestant must have been born a female, never been married, or have had a child.
10. Good Sportsmanship and Kindness to others are **EXPECTED**
11. Contestants are **EXPECTED** to be of good moral character and be a positive representative of Crawford County.
12. The winner is encouraged to represent the Crawford County Fair Association by attending and participating in local parades, school appearances, etc.

If you have any questions, please contact Sue Holcomb or Christie Jo Mason-Rogers at this email address: ccfpagants72947@gmail.com

Crawford County Fair
Jr Fair Queen/ Fair Queen Pageants

Saturday, September 14, 2024, 7:00 PM
Contestants need to check-in by 6:00 PM
Kirksey Park - Stage Area
Mulberry, Arkansas

Entry Fee: \$50

Deadline to Enter: August 31, 2024

NEW THIS YEAR: Registration will be online. Please visit the Crawford County Fair Pageants page on Facebook for the link to the registration form.

Each contestant is encouraged to ride in the Crawford County Fair Parade.

- Saturday, September 7, 2024, 11:00 AM

Practice (Optional): Contestants may practice on stage and visit with the directors of the fair pageants.

- Stage area at the fairgrounds.
- Saturday, September 7 following the parade.
- 1:30 PM - 2:30 PM
- Contestants are encouraged to practice at home after they see the layout of the stage.

Age Divisions

Division	Ages	
Jr. Fair Queen	14 - 17 years old	
Fair Queen	18 - 23 years old	NOTE: If you are 17 and a graduating senior this year, you will compete in the Fair Queen division.

Rules

1. Contestants **MUST** be a resident of Crawford County for at least 6 months prior to the pageant.
2. A winner of a title may not compete in the same division in which she holds or held the title.
3. A winner, 1st Runner-Up, and 2nd Runner-Up will be awarded in each division.
4. Judges' decisions are final.
5. Good Sportsmanship and Kindness to others are **EXPECTED**
6. Winner is expected to attend the next year's pageant to crown the new title holder and participate in the annual fair parade
7. All contestants are encouraged to participate in the annual fair parade to be held on Saturday, September 7, in downtown Mulberry. Line up will begin on Church St (turn by the Dairy Dlp) and continue down the street. Pageant contestants will line up behind those already in line. You must provide your own transportation and signage. You **ARE** allowed to throw candy.
8. Dressing rooms will be provided, however, due to limited space please come with hair and makeup stage ready.
 - a. Contestants should arrive at the stage in their interview attire since the on-stage introduction will be first.
9. **ONLY** contestants are allowed backstage. (there will be ladies backstage to assist with the contestants)
10. A contestant must have been born a female, never been married, or have had a child.
11. Contestants are **EXPECTED** to be of good moral character and be a positive representative of Crawford County.
12. The winner is encouraged to represent the Crawford County Fair Association by attending and participating in local parades, school appearances, etc.
13. If chosen as a winner, you will have the opportunity to attend and compete in the Miss AR State Fair Jr Queen/ Queen pageant in Little Rock. The pageant will be held in Little Rock in October. IF The winner chooses not to attend the State competition, the honor will be awarded to the 1st runner-up and she will have the opportunity to compete for the title of Miss Arkansas State Fair Queen

If you have any questions, please contact Sue Holcomb or Christie Jo Mason-Rogers at this email address: ccfpageants72947@gmail.com

Categories and Scoring for the Jr. Fair Queen and Fair Queen Divisions

- **Interview:** 5 minute private interview with the judges
 - Plans are to hold these on the day of the pageants. A schedule will be set up and shared once registration has closed.
 - Interview attire: business casual; dress; pantsuit
 - Interview times will be emailed to each contestant. Please arrive at least 10 minutes prior to your interview time
- **On-stage Introduction** - Interview attire
- **Evening Gown of choice** - The style of the evening gown is at the discretion of the contestant.
 - On-stage question - The on-stage question will be a part of the scoring in the Evening Gown competition. A list of possible questions will be provided prior to the competition.
- **Scoring will be as follows:**
 - Interview - 30%
 - On stage introduction - 20%
 - Evening gown with on-stage question - 50%

NWS Welding LLC



Pipe & Cable * Wrought Iron * Ornamental Iron

Nic Stockton * 479-652-7638

nwshillbilly82@gmail.com



GEORGIA RIDGE FARMS INC

CUSTOM MEAT PROCESSING

9020 Green Hollow Road, Ozark AR 72949
(479) 667-2442

Owner: Kevin Collins

Let us process your beef, pork, lamb,
goat and deer!

We also sell and process hormone and antibiotic free whole or half
beef raised on our family farm.

Give us a call today!
We have openings available!

www.thecrawfordcountyfair.com

CRAWFORD COUNTY FAIR

JLA BUYERS

Alma Animal Clinic
Alma Tractor
Alma Travel Mart
APAC
Atwoods in Alma
Auto Plex of Alma
Blake Montgomery Well Service
Brant Farms
Brister Law Firm PLLC
Cedar Acres
Citizens Bank & Trust Company
Crabtree Farms
Crawford County Abstract
Edward Jones – Lyle Newton
Crawford County Farm Bureau
Farmers Cooperative
Faucher Auction & Realty
I-40 Livestock Auction of Ozark
John Wood – State Farm
Kamp K-9
Kerry Bob King & Reba King
Meadors Lumber Company
Ocker Funeral Home
Riggs Cat Equipment Sales
Sandy Branch Farms
Simon Dentistry
South Built LLC
Stevie King & Katie King
Triple D Farm
Workman's Travel Centers

www.thecrawfordcountyfair.com

TAX BREAK

FABIAN

Income Tax Preparation

*"Working to save
YOU Money!"*



Next to Braum's,

Alma AR

(479)632-1040

143 Hwy 71 North, Alma

www.taxbreakofarkansas.com

YEAR ROUND TAX SERVICE



HOME OF THE CRAWFORD
COUNTY FAIR
WELCOME!

Gary D. Baxter, Mayor

207 N. Main St.
Mulberry, AR 72947
(479)997-1321

www.cityofmulberry.org



Mulberry City Limits

CITY OFFICIALS

Carla Southerland-Recorder/Treasurer
Monica Freeland - Executive Assistant to Mayor
Sarah Kizer - Court Clerk
Sean Brister - City Attorney/Prosecuting Attorney

CITY COUNCIL MEMBERS

Wilma Peevy	Stacy Muntz	Jimmy Moore
Sheila Trent	Kimberly Bruce	Bobby Tweedy

www.thecrawfordcountyfair.com

FAIR PARADE

Saturday, Sept. 7th

11:00am

Downtown Mulberry

Parade Chairs: Jared & Jessie Williams

479-208-2751

LINE UP AREAS:

1. Horses line up on 2nd Street
2. Pageant Contestants & Outside royalty - line up on Church St (turn beside Dairy Dip)
3. Floats, Antique Cars & Tractors - line up on Main St (Starting at stop sign by City Complex back to RR Tracks)
4. Grand Marshal, Current CC Fair Royalty & Special Guest & Walking w/Pet - Line up at City Complex by 10:00am

Floats

(must be made on flatbed trailer)

Bicycles / Bands / Horses

Antique Tractors & Cars

Decorated Vehicles

(Golf cart, atv, car, pageant contestant vehicle - Must be decorated!)

Saturday, before the fair!!



ACE Hardware

Hardware * Lumber
Tools * Plumbing
Electric * Paint
Lawn & Garden

1610 East Main
Van Buren
474-5278

4

4910 Jenny Lind
Fort Smith
646-1209

2619 Rogers
Fort Smith
783-4629

LOCATIONS
TO SERVE
YOUR NEEDS

814 W. Center
Greenwood
996-0670

2024 Belt Buckle Sponsors for Livestock

<i>Species</i>	<i>Grand Champion.</i>	<i>Reserve Champion</i>
Steer	Simon Dentistry	King Livestock
Lamb	Sandy Branch Farm	Beasley Electric
Hog	Dickerson Hardware	Brisler Law Firm
Goat	Mae Farms	The Paint Store
Broiler	Arnold Family Farms	Crabtree Farms
Pullets	Mastercraft Boiler	Mastercraft Boiler
Rabbit	Mastercraft Boiler	Biery Hill Farm

Round Robin Showmanship

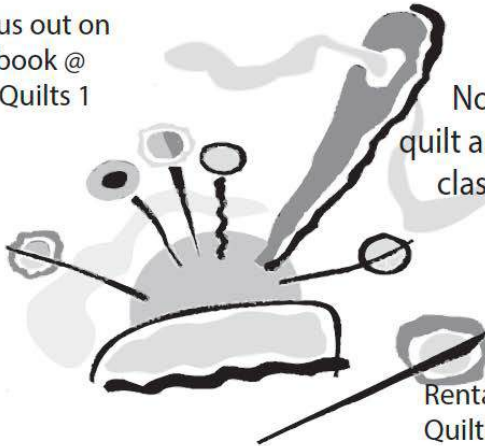
Senior Division Triple D Farms
Junior Division Triple D Farms

Other contributors:

Ozark Natural Designs
Accu Temp
Mallory Workman Accel real estate
Keepers Storage
Heartland Financial Samantha Stanley
Precision Metals
Chris Boerjan
The Heritage Group Real Estate Company

Cozy Quilts & Things

Check us out on
Facebook @
Cozy Quilts 1



Now offering
quilt and Kimberbell
classes in shop!

Rental - Long Arm
Quilting Machine

**We are locally owned and operated carrying over
10,000 yards of 100% cotton fabrics at competitive prices.
For those who have a quilt top that needs quilted we have
a long arm machine and we will do your quilting for you!**

Come See Us At:

10017 Silver Maple Drive

Mulberry, AR

479-997-8366 or 479-997-5689

Hours: 9:30am - 5:00pm M-F

9:30am - 2:30pm Sat

Linda DeWater - Owner

www.thecrawfordcountyfair.com

Crawford County Fair Equine Expo

Saturday, Sept. 7 12:30 pm

Superintendent: Tosha Williams (479) 213-3553

Crawford County Fair Grounds Arena

1. Show begins at 12:30pm. Not responsible for cancelled classes.
2. Coggins-current on all equine over 6 mo. old (last 12 months) checked in at gate, no entry without. Age of horse is determined by Breed Registration Papers and/or Coggins Papers.
3. All Crawford County Fair general rules and regulations, Show Ring Code of Ethics, and Parking Rules and Regulations apply to Equine Expo.
4. Equine must be owned and exhibited by resident of Crawford County, a student, or member of Crawford County 4-H programs.
5. No limit to number of equine shown by owner/exhibitor in show; however, only one horse per exhibitor per performance class.
6. Each exhibitor can only use one horse towards high point awards. To qualify for high point awards you must compete in at least one judging and one speed class.
7. Points awarded except Costume Class which does NOT count towards high point.
8. Show committee and judge reserve right to combine or split classes when needed.
9. Exhibitor must be 18 years old or over to show stallions.
10. Youth must wear safety helmet in all speed events.
11. AQHA rules apply.
12. Show is open to Crawford County residents ONLY.
13. Pony is 58" hands and shorter.
14. When your class/name is called, you will have it called 3 times and if you are not in the arena by the third call you will not be able to compete in that class.

Entry Fees \$5 per class.

Points as follows: 1-60, 20-55, 3-50, 4-45, 5-40, after 5th -1 for participation.

HALTER*

A - Stallions B-Geldings C-Mares D-Miniatures E-Pony

*Age groups for Classes A-E: (age of horse)

1. Weanling/Yearling
2. 2-3 Years Old
3. 4-5 Years Old
4. 6-10 Years Old
5. 11-15 Years Old
6. Senior Horse (16 & older)

**Age groups for Classes F-N : (contestant age)(all classes except Halter)

1. LEADLINE (F G H I M)
2. 8 & Under
3. 9-14 years of age
4. 15-18 years of age
5. 19+

SHOWMANSHIP AT HALTER – F**

Costume-G

WESTERN PLEASURE - H HORSEMANSHIP - I

TIMED EVENTS:

YOUTH EQUINE EXPO EXHIBITORS MAY PURCHASE 1
WEEKLY PASS DURING REGSITRATION FOR HALF PRICE



BOILER

Mike Shipley

Owner

PO Box 1658
Van Buren, AR 72957

479-474-3685
Fax: 479-474-3740



*We love to see
your family
smile!*



Dawson Urrutia, D.M.D.

108 North Highway 71
Suite 112, Alma, AR 72921

(479) 370-4966

www.urrutiafamilydental.com

Photograph of the Urrutias taken by
Danielle Hobbs Photography

HOME ECONOMICS DIVISION

General Rules

Adult and Youth Division

Youth exhibitors are age 5-19 and not married.

Adult exhibitors are age 20 and over, or married at age 19 and under.

Pre-school Arts & Crafts are age 3-4 and for exhibit only.

1. All exhibits must be made since Sept 2022.
2. Exhibits must be entered in the name of the maker only.
3. Because of limited space, no exhibit will be shown unless listed in the catalog. Only one entry in class except miscellaneous.
4. Absolutely no early checkouts!
5. All persons exhibiting must be at the fairgrounds personally, or have a representative to check their exhibits in and check them out on the closing of the fair. Exhibits may be checked in between 1:00pm and 6:00pm on Monday, Sept. 11th and remain on display until 6:00pm on Saturday, September 16th. All exhibits must be checked out between 6:00pm and 9:00pm on the last night of the fair. The fair will not be responsible for the exhibits after 10:00pm on September 16th.
6. The Home Economics Building will be closed on Tuesday from 9:00am until 4 pm for judging.
7. Worthy exhibits will be rated A, B or C. Premiums will be paid on the point basis at the rate of 20 cents per point.
8. Every exhibit will be under the control of the superintendent and every possible care will be taken to prevent damage but in no case will the fair be responsible for damage or loss that may occur.
9. All canned products may be shown in either half pint or pint jars and must have a 2 piece lid with ring band in place. Jelly products sealed with paraffin will not be accepted. No whole green beans or squash will be accepted. All jars (except dried foods and honey) must be sealed.
10. No premium will be awarded when an exhibit is unworthy, even though there is no competition. Decision of the judges is final.
11. Premium checks must be picked up at the Home Economics Building from 4:00pm until 9:00pm on Saturday, September 16.
12. Best of show exhibitors will have their picture taken for the paper/fairbook on Saturday evening, September 16 at the Home Economics Building at 6:00 in front of the Grand Champion Display.
13. Professional (paid) photographers or artists are not eligible to enter items.

Samantha Stanley
Health and Life
Licensed Agent



P 918-302-9090

C 479-285-3600

E sstanley@onelifeelite.com

W www.onelifeelite.com

Representing One Life America

Alma Animal Clinic

Large & Small Animal Medicine & Surgery

Carl Green, DVM

Zac Phillips, DVM

Nicole Stec, DVM

Scott Parham, DC

1915 Hwy. 64

Alma, AR 72921

Office: (479) 430-7280

Hours:

Monday - Friday

7:30 a.m. - 5:30 p.m.

Saturday - Closed

Sunday - Closed



AGRONOMY AND HORTICULTURE

Superintendents: River Valley Master Gardeners / Connie Meadors & Chris Bright
ADULT AND YOUTH DIVISION

1. Exhibits may be checked in between 1:00-7:00 pm on Monday, Sept. 12th and remain on exhibit until closing day. All exhibits must be checked out between 6:00-9:00 pm on Saturday, Sept 17th.. (The fair will not be responsible for the exhibits after 10:00pm)
2. Small grain and seed will be exhibited in quart jars.
3. Exhibites will be judged on the merits of the product entered.
4. All entries must be grown by exhibitor.
5. Please ensure potted plants are watered prior to entry / and include drainage dish underneath.

APIARY

A1 Honey (1/2 pint or pint)	10	5	Ribbon
A2 Honey with comb (1/2 pint or pint).....	10	5	Ribbon
A3 Bee Pollen (1/2 pint or pint).....	10	5	Ribbon
A4 Multi Misc. (1/2 pint or pint).....	10	5	Ribbon

AQUACULTURE

AQ1 Misc.....	15	10	Ribbon
---------------	----	----	--------

FLORAL ARRANGEMENTS

AR1 Whimsical	10	5	Ribbon
AR2 Romantic	10	5	Ribbon
AR3 Patriotic	10	5	Ribbon
AR4 Summer Fun	10	5	Ribbon
AR5 Fall Festival	10	5	Ribbon
AR6 Winter Wonderland	10	5	Ribbon
AR7 Terrarium.....	10	5	Ribbon
AR8 Exotic Garden (Fairy Garden).....	10	5	Ribbon
AR9 Home Fruit Garden Display (6 items displayed)	10	5	Ribbon
AR10 Home Vegetable Display (6 items displayed).....	10	5	Ribbon
AR11 Mixed Home/Garden Display (8 items displayed).....	10	5	Ribbon
AR12 Misc.....	10	5	Ribbon

FLOWERS - FLORICULTURE / Cut Specimens

1 Celosia-crested	10 5 Ribbon
2 Celosia-plumed	10 5 Ribbon
3 Caladium	10 5 Ribbon
4 Lily	10 5 Ribbon
5 Coleus	10 5 Ribbon
6 Marigold	10 5 Ribbon
7 Rose-single bud	10 5 Ribbon
8 Rose-two or more buds per stem	10 5 Ribbon
9 Rose-miniature	10 5 Ribbon
10 Zinnia	10 5 Ribbon
11 Sweet Potato Vine	10 5 Ribbon
12 Ornamental Grass-Foliage	10 5 Ribbon
13 Ornamental Grass-Foliage with seed head	10 5 Ribbon
14 Annual Vinca	10 5 Ribbon
15 Misc. (not a duplicate of a class above)	10 5 Ribbon

POTTED EXHIBITS

16 African Violets.....	10 5 Ribbon
17 Begonia	10 5 Ribbon
18 Cactus	10 5 Ribbon
19 Succulents	10 5 Ribbon
20 Ferns	10 5 Ribbon
21 Foliage	10 5 Ribbon
22 Geraniums.....	10 5 Ribbon
23 Hanging Baskets-Blooming	10 5 Ribbon
24 Hanging Baskets-Foliage.....	10 5 Ribbon
25 Marigold	10 5 Ribbon
26 Pepper Plant	10 5 Ribbon
27 Sansevieria	10 5 Ribbon
28 Orchid	10 5 Ribbon
29 Mixed Flowers..	10 5 Ribbon
30 Misc. (not a duplicate of a class above)	10 5 Ribbon

FIELD CROPS - Agronomy

1 Popcorn, 3 ears.....	10 5 Ribbon
2 Hybrid Corn, 3 ears any variety	10 5 Ribbon
3 Ornamental Corn, 3 ears.....	10 5 Ribbon
4 Wheat, one quart	10 5 Ribbon
5 Oats, one quart, any variety	10 5 Ribbon
6 Sorghum, one quart	10 5 Ribbon
7 Soybeans, one quart	10 5 Ribbon
8 Rice, bundle of heads	10 5 Ribbon
9 Hay (Ziplock Bag Sample) Labeled by Variety	10 5 Ribbon
10 Sunflower (one head or 3 miniature heads)	10 5 Ribbon
11 Seed-headed Grain	10 5 Ribbon

FRUIT

14 Three Apples, by variety 10 5 Ribbon
 15 Three Pears, by variety 10 5 Ribbon
 16 Raspberries 10 5 Ribbon
 17 Muscadines, Bronze 10 5 Ribbon
 18 Muscadines, Blue 10 5 Ribbon
 19 Three Figs 10 5 Ribbon
 20 Blackberries 10 5 Ribbon
 21 Pumpkins (Gaint/Regular/Both 10 5 Ribbon
 22 Watermelons (Giant/Regular/Both) 10 5 Ribbon

HERBS

24 Dried 10 5 Ribbon
 25 Cut 10 5 Ribbon
 26 Potted 10 5 Ribbon
 27 Blooming 10 5 Ribbon
 12 Eggs (6) 10 5 Ribbon
 13 Misc 10 5 Ribbon
 23 Misc 10 5 Ribbon
 28 Misc 10 5 Ribbon

Flowers / Floriculture Cont.

29 Peanuts, 1 quart 10 5 Ribbon
 30 Potatoes, 3 each (Irish/Sweet) 10 5 Ribbon
 31 Squash, 1 each 10 5 Ribbon
 (Winter, Summer, Ornamental - small, Ornamental - large, Misc)
 32 Gourd 10 5 Ribbon
 (Loofah, Ornamental - small, Ornamental - large, Birdhouse, Misc)
 33 Cantaloupe, one 10 5 Ribbon
 34 Cucumber, three 10 5 Ribbon
 35 Okra, five pods 10 5 Ribbon
 36 Peas, ten pods (Southern/Field) 10 5 Ribbon
 37 Peppers, five pods by variety 10 5 Ribbon
 (Hot, Sweet, Jalapeno, Banana, Bell (3), Misc)
 38 Eggplant, one 10 5 Ribbon
 39 Sweet Corn, three ears 10 5 Ribbon
 40 Tomatoes, three 10 5 Ribbon
 41 Cherry Tomatoes, three 10 5 Ribbon
 42 Carrots, three 10 5 Ribbon
 43 Onions, three by variety 10 5 Ribbon
 44 Garlic, one clove 10 5 Ribbon
 45 Beans, ten (Green or Dry) 10 5 Ribbon
 46 Misc 10 5 Ribbon



Citizens

BANK & TRUST COMPANY

MEMBER F.D.I.C.

PO Box 469 / Van Buren, AR 72957

479-474-1201

MAIN OFFICE: CLOVERLEAF PLAZA DOWNTOWN: 7th & BROADWAY

NORTHRIDGE: #4 NORTHRIDGE NORTH HILLS: HWY 59 & POINTER TRAIL

MOUNTAINBURG: HWY 71 NORTH ALMA: HWY 64 & 71

CEDARVILLE: 8828 N HW 59



CANNING

ADULT DEPARTMENT 1

YOUTH DEPARTMENT 1-A

Superintendents: Keri Jo King, Linda DeWater, Debbie Smith

Mary Frauenhoff, Emily Conley,

VEGETABLES & FRUIT

PROCESSED BY THE BOILING WATER BATH METHOD

Class.....	"A" "B" "C"
1. Tomatoes.....	10 5 Ribbon
2. Tomato Juice.....	10 5 Ribbon
3. Apple Sauce	10 5 Ribbon
4. Apples	10 5 Ribbon
5. Berries.....	10 5 Ribbon
6. Fruit Juice	10 5 Ribbon
7. Peaches.....	10 5 Ribbon
8. Pears	10 5 Ribbon
9. Plums	10 5 Ribbon
10. Pie Filling.....	10 5 Ribbon
11. Misc. (not a duplicate of a class above).....	10 5 Ribbon

PICKLES AND RELISHES

PROCESSED BY THE BOILING WATER METHOD

Class.....	"A" "B" "C"
12. "Gift Pack" of 3 different pickles/relishes in gift container	15 10 Ribbon
13. Bread and Butter Pickles	10 5 Ribbon
14. Dill Cucumber Pickles	10 5 Ribbon
15. Sweet Cucumber Pickles.....	10 5 Ribbon
16. Beet Pickles.....	10 5 Ribbon
17. Mixed Pickles	10 5 Ribbon
18. Peach Pickles	10 5 Ribbon
19. Squash Pickles	10 5 Ribbon
20. Pickled Okra.....	10 5 Ribbon
21. Pickled Peppers (any variety).....	10 5 Ribbon
22. Pickled Asparagus.....	10 5 Ribbon
23. Misc. Pickles (not a duplicate of a class above)	10 5 Ribbon
24. Salsa	10 5 Ribbon
25. Hot Sauce (chili, taco, pepper).....	10 5 Ribbon
26. Spaghetti Sauce or BBQ Sauce.....	10 5 Ribbon
27. Dill Relish	10 5 Ribbon
28. Sweet Relish.....	10 5 Ribbon
29. Misc. Relish (not a duplicate of a class above)	10 5 Ribbon

VEGETABLES- PROCESSED BY PRESSURE CANNER METHOD

Class.....	“A” “B” “C”
30. Shelled Beans.....	10 5 Ribbon
31. Green Beans (No whole green beans).....	10 5 Ribbon
32. Field Peas.....	10 5 Ribbon
33. Soup mixture.....	10 5 Ribbon
34. Corn Cream Style (pints only)	10 5 Ribbon
35. Corn Whole Kernel	10 5 Ribbon
36. Greens	10 5 Ribbon
37. English Peas.....	10 5 Ribbon
38. Carrots.....	10 5 Ribbon
39. Sauerkraut	10 5 Ribbon
40. Misc. (not a duplicate of a class above).....	10 5 Ribbon

PRESERVES OR JAM - PROCESSED BY BOILING WATER BATH

41. Berry	10 5 Ribbon
A- Strawberry B-Blueberry C-Blackberry D-Raspberry	
42. Cherry	10 5 Ribbon
43. Peach.....	10 5 Ribbon
44. Pear	10 5 Ribbon
45. Plum	10 5 Ribbon
46. Butter	10 5 Ribbon
A-Apple B-Pear	
47. Hot Pepper	10 5 Ribbon
48. Misc. (not a duplicate of a class above)	10 5 Ribbon

JELLY / SYRUPS - PROCESSED BY BOILING WATER BATH

49. Gift Pack of 3 Jelly/Jam/Preserves in Gift Container ...	15 10 Ribbon
50. Berry	10 5 Ribbon
A- Strawberry B-Blueberry C-Blackberry D-Raspberry	
51. Grape	10 5 Ribbon
52. Muscadine	10 5 Ribbon
53. Apple.....	10 5 Ribbon
54. Plum	10 5 Ribbon
55. Peach.....	10 5 Ribbon
56. Syrup (any flavor)	10 5 Ribbon
57. Misc. (not a duplicate of a class above).....	10 5 Ribbon

DRIED FRUIT & VEGETABLES

(Exhibited in Canning Jar w/ lid & ring; sealed or unsealed; Filled to within 1" of top.)

Class.....	“A” “B” “C”
58. Meat	10 5 Ribbon
59. Fruit.....	10 5 Ribbon
60. Vegetables.....	10 5 Ribbon
61. Herb.....	10 5 Ribbon
62. Fruit Leather.....	10 5 Ribbon
63. Misc.....	10 5 Ribbon

Creative Table Setting

Superintendent: Luann Wise 479-217-0280

Pre-register by Sept. 1st @ 479-883-2312 or 479-650-9899 / Spaces are limited.

Categories: Junior (age 13 & under) Senior (age 14-19) Adult (age 20 & up)

BLUE RIBBON - 20 points RED RIBBON - 15 points WHITE RIBBON - 5points

SAMPLE SCORECARD

Menu Notecard: 40 points

Consider: (10 points)

Nutritive Value

Food Groups (Include all food groups) (Grain, Fruit, Vegetable, Dairy, Protein)

Variety: (10 points)

Color

Texture

Flavor

Shape

Temperature

Type of table service appropriate to menu (10 points)

Notecard: (10 points)

4"x 6" card

Easily read

Color does not detract from table setting

Indicates meal to be exhibited (Breakfast, Lunch, Dinner, etc)

Table Setting: 60 points

Correct placement of all parts of place setting (30 points)

Table cloth or placement appropriate for occasion (15 points)

Centerpiece ties the food and setting together to form (15 points)

one theme - (exhibitor should arrange centerpiece)

TOTAL POINTS POSSIBLE - 100

1. Table setting should be set up between 1:00-7:00pm on Monday, September 12th.

2. Place setting must remain in place until 6:00pm on Saturday, September 17th. Fair is not responsible for items left or stolen.

3. Plan and display a menu on a 4x6 card (should include all four food groups).

4. Table place setting should include menu, centerpiece, placemat or tablecloth.

5. One complete setting of dishes, glasses, flatware, and napkin.

6. Set up exhibit on a 24x24 or 32x30 table space showing correct placement of all parts of the place setting. (Tablecloths need not fit the table being used for the exhibit, but should be appropriate for a table to be used).

7. Arrange the centerpiece rather than purchasing an arrangement.

8. Only one place setting per person is allowed to be entered.

9. Menu and centerpiece should be original each year.

10. Place settings can be either formal or casual.

11. Example types: Picnic, formal dinner, casual dinner, family meal, etc)

*Proud Supporters
of the
Crawford County Fair*

S-K

King Ranch



**Stevie & Katie King
with "future ranch-hands"**

ART DEPARTMENT

Adult, Youth, Special Need & Preschool

Superintendents: Connie Gregory, Sheila Trent, Sheila Pannell , Sara Leasure
Debbie Burger & Frankie Bagley

1. Adult entries in all classes should be framed & ready to hang with screw eyes and wire on back of article.

No other types of hangers will be accepted. NO GLASS

2. Youth Art - No Frames - NO GLASS. Adult Art - No Frames - Must be matted, NO GLASS

3. Youth may enter 1-20. Adults may enter 1-12.

4. Exhibitors must list class on back of item for check-in.

5. Points: 1st - 10 / 2nd - 5 / 3rd - Ribbon

CLASSES

1. Original oil 7. Original water color

2. Original acrylic 8. Original pastel

3. Original pen 9. Original oil pastel

4. Original pencil 10. Original mixed media

5. Original colored pencil 11. Pattern painting / colored design

6. Original 3D charcoal 12. Misc.

EXTRA YOUTH ART

13. Original using printmaking

14. Collage

15. Crayola drawing

16. Marker drawing

17. Sand art

18. Tempera

19. Glue art

20. 3D

SPECIAL AWARDS (Ribbons Only)

21. School art, any media, matted & ready to hang

AGES 4 & BELOW / PRESCHOOLERS (Ribbons Only)

22. Finger painting, unframed

23. Crayon or marker drawing, unframed

24. Collage

25. Casting (plaster, clay, play dough, salt dough)

Departments:

Youth 5-7

Youth 8-10

Youth 11-14

Youth 15-19

Adult

PHOTOGRAPHY DEPARTMENT

Superintendents: Raylene Adams, Glenanna O'Mara, Elaine Stanfield

ADULT DEPARTMENT 2-B

YOUTH DEPARTMENT 2-C Age - 5-11 / 2-D Age 12-19

NO FRAMES ALLOWED

NO PROFESSIONAL PHOTOGRAPHERS

PHOTO SIZE: Minimum 5x7 - Maximum 8x10

OVERALL SIZE INCLUDING MAT: Minimum 8x10 - Maximum 11x14

MAT QUALITY: Must be made of materials at least weight of standard poster board.

No hangers. Hangers are provided by department.

ALL PHOTOS must be Matted either flat, beveled or recessed.

ALL ENTRIES must be appropriate for viewing by all audiences and must have been photographed since the last fair.

LIMITED to one exhibit per class / per exhibitor / except as noted. NO more than 20 photos per exhibitor.

POINTS: 1st - 10 / 2nd - 5 / 3rd – Ribbon

CLASSES

(All may be color or black & white)

1. Portraiture
2. Landscape, Seascape, Skyscape
3. Still life
4. Animals
5. Flowers, Nature
6. Architecture, Industrial, Buildings
7. Action
8. Photo Canvas
9. Misc (may enter 2 color and 2 black & white)

CLOTHING

ADULT DEPARTMENT 1

YOUTH DEPARTMENT 1-A

Superintendents: Molly Dickerson, Karen Rhodes & Helene Sullivan

ALL GARMENTS MUST BE CLEAN, PRESSED & ON A HANGER

All items must be sewn, either by hand or by machine by exhibitor.

INFANT'S CLOTHING

- Class..... "A" "B" "C"
- 1. Infant's Clothing for Boy..... 10 5 Ribbon
- 2. Infant's Clothing for Girl..... 10 5 Ribbon
- 3. Misc. Baby Accessory Item (sling, hair band, etc) ... 10 5 Ribbon

CHILDREN'S CLOTHING - (girl or boy clothing- children's sizes only)

- 4. Child's Dress..... 10 5 Ribbon
- 5. Child's Shorts 10 5 Ribbon
- 6. Child's Blouse or Shirt 10 5 Ribbon
- 7. Child's Pants or Slacks. 10 5 Ribbon
- 8. Child's Jumper or Overalls 10 5 Ribbon
- 9. Misc. Child's Item 10 5 Ribbon

MEN'S, WOMEN'S, MISSES', or JUNIOR SZES

- 10. Dress 20 15 Ribbon
- 11. Formal Dress - Long or Short 20 15 Ribbon
- 12. Two Piece Ensemble - Top and Skirt or Slacks..... 25 20 Ribbon
- 13. Coat, Jacket, Cape..... 20 15 Ribbon
- 14. Jumper or Overalls..... 10 5 Ribbon
- 15. Sleepwear, Pajamas, Loungewear..... 10 5 Ribbon
- 16. Robe 10 5 Ribbon
- 17. Slacks or Shorts (must have waistband,button or zipper).... 15 10 Ribbon
- 18. Slacks or Shorts (elastic waist)..... 10 5 Ribbon
- 19. Skirt (must have waistband, button or zipper) 15 10 Ribbon
- 20. Skirt (elastic waist) 10 5 Ribbon
- 21. Blouse 10 5 Ribbon
- 22. Shirt..... 10 5 Ribbon
- 23. Top 10 5 Ribbon
- 24. Vest (lined) 10 5 Ribbon
- 25. Hat, Scarf, Collar 10 5 Ribbon
- 26. Apron 10 5 Ribbon
- 27. Purse..... 10 5 Ribbon
- 28. One article made from a t-shirt or sweat shirt..... 10 5 Ribbon

Areas of Scoring Areas of Scoring

General Appearance Garment Details (top stitching, etc)

Cutting (on grain) Closures (buttons, zipper, hooks)

Seams (width size & finished edges) Hems (size and finished edges)

- 29. Sewn Garment.....
(with hand or machine applique or embroidery design applied) 20 15 Ribbon

- 30. Patriotic Clothing or Sewn Accessory Item
(red, white, blue, or patriotic print)..... 15 10 Ribbon

- 31. Christmas Clothing or Sewn Accessory Item

- (made from Christmas print)..... 15 10 Ribbon
- 32. Repurposed Clothing Item 10 5 Ribbon
- 33. Misc 10 5 Ribbon



**Arkansas Valley
Electric Cooperative**



WAVE 
RURAL CONNECT

CHANGING THE COMMUNITIES WE SERVE



**Learn more about how we are
changing the River Valley.**

www.waveruralconnect.com



Serving the Crawford County
agricultural community for
more than 60 years.

*Agriculture ...
Try Living Without It!*

3430 Kibler Rd * Van Buren
479-474-5229
www.afbic.com

Sean Brister / President
James McGhee, LUTCF/Agency Mgr. - Lic. #48029
Justin Lovett, LUTCF/Agent - Lic. #91114
Jody Brogan, LUTCF/Agent - Lic. #270630
Leslie Ann Jones / Agent - Lic. #396010
Kyler Brumley / Agent
Jennifer Massanelli / Agent
Mary Whitaker, MSR
LeeAnn Campbell, MSR
Mary Beth Hays, CSR

HOUSEHOLD ARTS, KNITTING & CROCHET

ADULT DEPARTMENT

Superintendents: Nellie Oliver & Earlene Painter

YOUTH DEPARTMENT

Superintendents: Rosemary Blackaby, Joni Garrett & Lillie Aguilar

**All items must have been made in the past year by exhibitor.

B: Braided C: Crochet E: Embroidery H: Hooked K: Knit O: Other T: Tied

S: Sewn W: Weaving X: Cross Stitched

Class.....	"A" "B" "C"
1. Baby Afgan/Blanket.....	15 10 Ribbon
2. Afgan/Blanket	15 10 Ribbon
3. Baby Quilt/ Lap Quilt	15 10 Ribbon
4. Quilt - Hand Stitched (all).....	20 15 Ribbon
5. Quilt - Machine Stitched (all)	15 10 Ribbon
6. Quilt - Machined Quilted/Hand Pieced.....	15 10 Ribbon
7. Quilt - Hand Quilted/Machine Pieced.....	15 10 Ribbon
8. Quilt - Appliqued, Cross Stitched, or other	15 10 Ribbon
9. Doily	10 5 Ribbon
10. Dish Cloth	10 5 Ribbon
11. Towel	10 5 Ribbon
12. Pot Holder	10 5 Ribbon
13. Table Runner.....	10 5 Ribbon
14. Kitchen Accessory	10 5 Ribbon
15. Hat/Mittens/Gloves.....	10 5 Ribbon
16. Cape/Shawl/Poncho	10 5 Ribbon
17. Scarf/Headband (individual set)	10 5 Ribbon
18. Booties or Houseshoes.....	10 5 Ribbon
19. Child Clothing (not sewn).....	10 5 Ribbon
20. Adult Clothing (not sewn)	10 5 Ribbon
21. Clothing - Doll/Stuffed Animal	10 5 Ribbon
22. Bookmark.....	10 5 Ribbon
23. Toy	10 5 Ribbon
24. Christmas Ornament.....	10 5 Ribbon
25. Christmas Misc. Item.....	10 5 Ribbon
26. Wall Hanging/Picture.....	10 5 Ribbon
27. Rug	10 5 Ribbon
28. Tote Bag.....	10 5 Ribbon
29. Pillow Case	10 5 Ribbon
30. Pillow	10 5 Ribbon
31. Baby Set.....	10 5 Ribbon
***One Item Per Class (B-X)	
32. Misc.....	10 5 Ribbon

Section 1: 1-8 Section 2: 9-32

FOODS

ADULT DEPARTMENT / YOUTH DEPARTMENT

Superintendents: Phyllis Reeves & Mabel Coleman (Adult)

Superintendents: Laura Abel & Betty Kelly (Youth)

All item must be made from scratch for Adult Divisions.

Adult may enter only classes 1-28. Youth may enter all classes 1-34.

General Home Economics Rules Apply

All Exhibits must be plated and in ziplock bags - except #3.

Class..... "A" "B"
"C"

- 1. 3 Cup Cakes 10 5 Ribbon
- 2. Cake, 1/4 iced..... 10 5 Ribbon
- 3. Fancy decorated cake (box or pan, not cake)..... 10 5 Ribbon
- 4. Cake, 1/4 (angel or sponge, un-iced) 10 5 Ribbon
- 5. Pound Cake, 1/4..... 10 5 Ribbon
- 6. Bar Cookies (plate of 3)..... 10 5 Ribbon
- 7. Sugar Cookies (plate of 3) 10 5 Ribbon
- 8. Peanut Butter Cookies (plate of 3) 10 5 Ribbon
- 9. Chocolate Chip Cookies (plate of 3) 10 5 Ribbon
- 10. Unbaked Cookies (plate of 3) 10 5 Ribbon
- 11. Cut Out Cookies (plate of 3)..... 10 5 Ribbon
- 12. Biscuits (plate of 3) 10 5 Ribbon
- 13. Cornbread Muffins (plate of 3) 10 5 Ribbon
- 14. Muffins (plate of 3) 10 5 Ribbon
- 15. Yeast Rolls (plate of 3) 10 5 Ribbon
- 16. Yeast Bread (1/2 loaf) 10 5 Ribbon
- 17. Cinnamon Rolls (plate of 3)..... 10 5 Ribbon
- 18. Quick Bread (fruit or nut) (1/2 loaf) 10 5 Ribbon
- 19. Fudge (plate of 3 pieces) 10 5 Ribbon
- 20. Peanut Brittle (plate of 3 pieces)..... 10 5 Ribbon
- 21. Other Candy (plate of 3 pieces) 10 5 Ribbon
- 22. Fruit Pie (1/4 pie) 10 5 Ribbon
- 23. Pecan Pie (1/4 pie) 10 5 Ribbon
- 24. Brownies (plate of 3) 10 5 Ribbon
- 26. Almost Home Made..... 10 5 Ribbon
- 27. Fried Pies..... 10 5 Ribbon
- YOUTH ONLY - Made From Mix
- 29. Brownies (plate of 3) 10 5 Ribbon
- 30. Cupcakes (plate of 3) 10 5 Ribbon
- 31. Cake, 1/4 iced..... 10 5 Ribbon
- 32. Biscuits (plate of 3)..... 10 5 Ribbon
- 33. Muffins (plate of 3)..... 10 5 Ribbon
- 34. Cornbread Muffins (plate of 3) 10 5 Ribbon
- 110
- 25. Drop Cookies (plate of 3)..... 10 5 Ribbon
- 28. Misc (not a duplicate of a class above)..... 10 5 Ribbon

Your one stop spot for
immunization & testing.

479-262-2156

www.colemanrx.com



HANDICRAFT

ADULT DEPARTMENT 6

Superintendents: Cheryl Stewart & Tracy Hudson

**All articles must be handmade. No item will be accepted from an exhibitor having a duplicate in

another department of the fair.

Class.....	"A" "B" "C"
1. String Art	10 5 Ribbon
2. Woodworking/Woodcarving.....	15 10 Ribbon
3. St. Patricks Day Item.....	10 5 Ribbon
4. Christmas Tree Ornament	10 5 Ribbon
5. Christmas Decoration	10 5 Ribbon
6. Counted Cross-stitch (one article).....	10 5 Ribbon
7. Decorated or Handmade Basket.....	10 5 Ribbon
8. Decorated or Handmade Birdhouse	10 5 Ribbon
9. Wreath with Holiday Theme.....	10 5 Ribbon
10. Diorama (24"x24" max size).....	10 5 Ribbon
11. Decorated or Handmade Soap	10 5 Ribbon
12. Leather Craft.....	10 5 Ribbon
13. Fall Decoration	10 5 Ribbon
14. Greeting Card.....	10 5 Ribbon
15. Hair Accessory.....	10 5 Ribbon
16. Handcrafted Flower in a Container	10 5 Ribbon
17. Handmade Toy (including dolls)	10 5 Ribbon
18. Holiday Item.....	10 5 Ribbon
19. Jewelry Article (one item)	10 5 Ribbon
20. Mason Jar Craft	10 5 Ribbon
21. Native American Item.....	10 5 Ribbon
22. Seashell Art.....	10 5 Ribbon
23. Macrame.....	10 5 Ribbon
24. Painted or Decorated Gourd/Pumpkin (no punctures)....	10 5 Ribbon
25. Painted Item (no furniture).....	10 5 Ribbon
26. Patriotic Item	10 5 Ribbon
27. Permanent Flower Arrangement	10 5 Ribbon
28. Pin Cushion.....	10 5 Ribbon
29. Recycled Item.....	10 5 Ribbon
a. Aluminum b. Fabric c. Glass d. Metal e. Paper f. Plastic g. Styrofoam h. Wood i. Vinyl	
30. Scrapbook Pages (2 pages)	10 5 Ribbon
31. Terra Cotta Pot Art.....	10 5 Ribbon
32. Wall Hanging (not sewn)	10 5 Ribbon
33. Shadow Box.....	10 5 Ribbon
34. Wind Chimes.....	10 5 Ribbon
35. Yard Art	10 5 Ribbon
36. Misc (not a duplicate of above).....	10 5 Ribbon

HANDICRAFT

YOUTH DEPARTMENT

Ages: 5/7

Marilyn Spence, Shannon Davis, Lisa Scroggins, Abigail Ford-Bey & Marshelia Jack

Ages: 8/9 Jerry & Cindy Valentine

Ages:10/19 David & Suzy Ferguson

(Single and under 19 years of age)

LIMIT: 15 items per person in Handicraft Department

Item must be handmade - Small item must be brought in zip lock bag

Item must be 5lbs. or less - Items must be entered by person making craft/ and or parent

Class.....	"A" "B" "C"
1. Basket, Decorated	10 5 Ribbon
2. Birdhouse, Decorated.....	10 5 Ribbon
3. Bookmark, Decorated	10 5 Ribbon
4. Candles, Decorated	10 5 Ribbon
5. Candle Holder	10 5 Ribbon
6. Model Cars, etc.	10 5 Ribbon
7. Painted or Decorated Gourd or Pumpkin.....	10 5 Ribbon
8. Christmas Decoration.....	10 5 Ribbon
9. Christmas Ornament	10 5 Ribbon
10. Dolls, Decorated / Handmade	10 5 Ribbon
11. Flag Decorated.....	10 5 Ribbon
12. Flower Arrangement	10 5 Ribbon
13. Flower Pot.....	10 5 Ribbon
14. Flower, Handmade in Container.....	10 5 Ribbon
15. Hat, Decorated	10 5 Ribbon
16. Hair Clasp/Headband, Decorated.....	10 5 Ribbon
17. Jewelry (one piece of set)	10 5 Ribbon
18. Key Ring or Chain	10 5 Ribbon
19. Lego Creation (must be on a firm base).....	10 5 Ribbon
20. Magnet	10 5 Ribbon
21. Natural Craft	10 5 Ribbon
22. Paper Craft	10 5 Ribbon
23. Paperweight.....	10 5 Ribbon
24. Plaster / Plastic Article.....	10 5 Ribbon
25. Painted Rocks.....	10 5 Ribbon
26. Plaque.....	10 5 Ribbon
27. Picture Frame.....	10 5 Ribbon
28. Duct Tape Item.....	10 5 Ribbon
29. Pencil Holder	10 5 Ribbon
30. Recycled Item / Up-Cycle Item	10 5 Ribbon
31. Seed Picture	10 5 Ribbon
32. Scrapbook, (page or book).....	10 5 Ribbon

Youth Handicraft, Cont.

- 33. Soap, Decorated 10 5 Ribbon
- 34. String Art 10 5 Ribbon
- 35. Sun Catcher / Windsock..... 10 5 Ribbon
- 36. Tote Bag..... 10 5 Ribbon
- 37. Tie-dyed Article 10 5 Ribbon
- 38. Bottle Art..... 10 5 Ribbon
- 39. Wood Craft..... 10 5 Ribbon
- 40. Misc (not a duplicate of a class above) 10 5 Ribbon



VAN BUREN
CHAMBER OF COMMERCE

**510 Main St.
Van Buren, AR**

479.474.2761

vanburechamber.org

Follow Us!



Republican Party of Crawford County

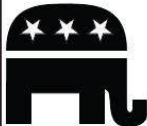


Headquarters
521 Main Street
Historic Downtown Van Buren
rpccarkansas@gmail.com

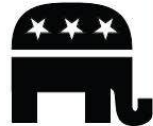
We are proud of our elected officials!

We meet monthly at our headquarters on the 2nd
Tuesday of every month at 7:00pm.
The Republican Women of Crawford County
meet at 6:00pm on the same night.

*Come Visit Us At Our Booth
At The Fair!*



Find us on:
Facebook



EDUCATIONAL EXHIBIT BOOTHS

ADULT DEPARTMENT YOUTH DEPARTMENT

Superintendent: Luann Wise 479-217-0280

1. This division is limited to non-commercial groups for adult and youth organizations or clubs in Crawford County.
2. All booths must be pre-registered by August 22nd - text or call for space 479-883-2312 or 479-650-9899 with the following information: Name of club or group; name, address, phone number of person in charge of exhibit; title of exhibit, and a brief description of exhibit.
3. Exhibits may be set up between 1:00pm and 6:00pm on Monday, September 11, 2023. Exhibits will be released between 6:00pm and 9:00pm on Saturday, September 16, 2023.
4. Board dimensions: Size of board must not exceed these dimensions 48"W x 30"D x 48"high.
5. Each exhibitor will have a 48"x30" space (1/2 table). Exhibit space will be covered. Each exhibitor will be responsible for providing a three-sided back ground board for the purpose of attaching exhibit title, poster or other information. Each exhibitor may provide an additional cover on the table top.
6. Each deserving booth will receive a blue, red, or white ribbon. Prize money will be awarded to the top three exhibits in youth adult.
7. One youth club exhibit and one adult club exhibit will receive a Grand Champion or Special Rosette Ribbon for being judged the best overall exhibit in that category.
8. Exhibitor signs will be provided, but will not be posted until after judging.
9. Club members or leaders should not be present during judging.
10. NO ELECTRIC WILL BE PROVIDED!

Youth: 1st - \$25 2nd - \$20 3rd - \$15 Adult: 1st \$25 2nd-\$20 3rd - \$15

EDUCATIONAL EXHIBIT BOOTH

SCORECARD

COMPONENT

APPROPRIATENESS OF THEME

Educational and/or Promotional Message

Timely, important, practical, message suite for the viewing audience 15

PRESENTATION

Attracts Attention - (light, motion, sound, color, size, etc) 10

Title - Attractive, catchy, easy to read, appropriate placement 10

Design - Good use of color, center of interest, unity of interest, contract, balance, proportion and scale 20

Appropriate size, appropriate placement, neat and easy to read 10

Message accurate, concise, simple -

Only one subject covered, unnecessary material eliminated 15

Increase knowledge / changes

Attitude/Created a desire for involvement 20

TOTAL 100

POINTS

Mulberry Lions Club



We Serve

Our efforts help support local projects like:

The Senior Inn, Mulberry and Pleasant View Public Schools, Mulberry Library, Crawford County Fair, Boys & Girls State, Little League Team Sponsorship, and Eye Glasses & Optical Exams for those who need a little help. Annually we made substantial donations to: “Lions World Services For The Blind,” “Mid-South Lions Sight and Hearing Service,” “Lions Diabetes Awareness and Service Center.” Last but not least, our Lions Club sponsors Mulberry’s Annual Christmas Parade, supplying Santa’s “Goody-bags” for the kids.

Past years we’ve given over
\$300,000 to our local community

If you’d like more information about
the Mulberry Lions Club call

Bill Ryan- President

Claudine Shankle - VP

Pam Moore - Sec/Treas



Costume Contest

September 13th – 7:30 Livestock Arena

RULES:

1. Let's relax and have some fun.
2. No registration required, just show up, dress up, and be ready.
3. Animals must have competed in a livestock show during the 2024 CCF.
4. Contestants who did not have an animal registered in the 2024 CCF must arrange with an animal owner to show in costume contest.
5. Both Contestant and animal must be dressed up.
6. Lineup will begin at 7:00 PM behind the barn arena.
7. Animal must be on leash or carried during show. Pigs may be led into ring by contestant and then placed in pens inside the arena.
8. Awards will be given for: Most creative animal costume, best original costume, and crowd favorite. Contestants can win only ONE award.
9. Classes: 0-8 yrs, 9-18 yrs, 19 years and UP (classes may be adjusted due to entry numbers on day of show.)

Questions?

Contact Jennie Belt/Kay Bryant 608-387-2925



**CALL US
Samantha Stanley
479 285 3600**

OUR SERVICES

- **MEDICARE PLANNING**
- **FINAL EXPENSE PLANNING**
- **RETIREMENT PLANNING**

Make WSI Your MyLife.com!

www.eliteseniorplans.com

MULTIPLE POLICIES HELP YOU SAVE BIG



**Call today
and save!**



Purchasing home, auto, and motorcycle is just one of many ways to save.

Get smart and save hundreds with Farmers multi-policy discounts!



479.471.1000

DON JENKINS

Your Local Agent

AR Insurance Producer License # 1667631

1416 FAYETTEVILLE RD STE A

VAN BUREN, AR 72956

DJENKINS@FARMERSAGENT.COM

Restrictions apply. Discounts may vary. Not available in all states. See your agent for details. Insurance is underwritten by Farmers Insurance Exchange and other affiliated insurance companies. Visit farmers.com for a complete listing of companies. Not all insurers are authorized to provide insurance in all states. Coverage not available in all states.



Crawford County Cattlemen's Association



Perserving a way of life.



There's strength in numbers. No one understands that more than the members of the Arkansas Cattlemen's Association. Since 1959, the ACA has worked to protect your rights as an individual, an entrepreneur, as a Cattleman. We believe in helping our neighbors and treating them like family.

Join our family today!

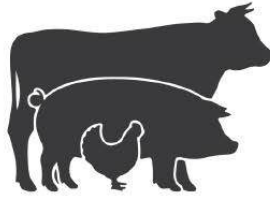


President: JEFF CLUCK (479) 208-0257

VP: TRAVIS PODE (479) 929-5252

Membership Chair: Dean Pendergrass / 479-883-9678

www.thecrawfordcountyfair.com



RICE CUSTOM



MEAT PROCESSING

3925 Hwy 348
Rudy, AR 72952
479-474-3012

Hours:
Monday-Friday 8am to 5pm
Saturday 8am to 12pm
Sunday 2pm to 4pm

Williams Farms



JARED ▫ JESSIE ▫ DAKOTA ▫ HAILEY
(479) 414 - 1074

Locally Raised

KEY'S

Always Natural

Family BUTCHER SHOP

479.474.1645

USDA

2900 OLIVER SPRINGS ROAD, VAN BUREN, AR, 72958

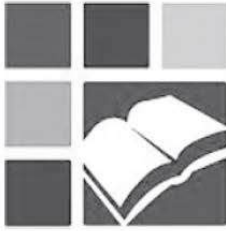
Monday-Friday 8am-6pm

Sat. 8am-12pm

Family Owned

Retail Sales

www.keysfamilybutchershop.com



Crawford County

Library System

Branches:

*Alma
Cedarville
Mountainburg
Mulberry
Van Buren*

1409 Main Street
Van Buren, AR 72956
www.crawfordcountylib.org

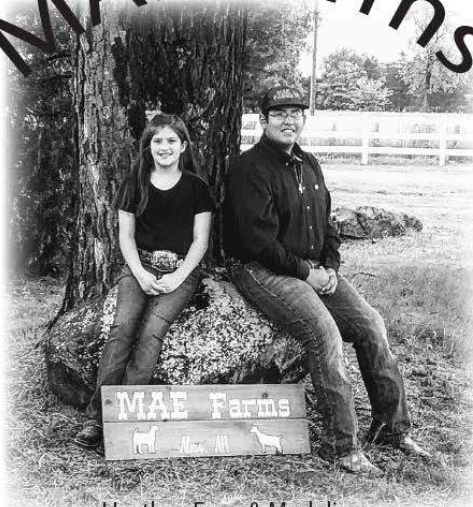
- *Offering books & programs for all ages
- *E-books & E-audiobooks
- *Digital magazines
- *And much, much more!

479-471-3226



Like our facebook page - Crawford County Library System to stay up-to-date with what is happening at YOUR library!

MAE Farms



Heather, Evan & Madeline
Registered Nigerian Dwarf & Commercial Boer Goats
Alma, AR / 479-228-8269

www.thecrawfordcountyfair.com

Alma Farm Supply, Inc.



growing with crawford county

**P.O. Box 820
428 Hwy. 64 East
Next to Alma Post Office**

(479)-632-3194

Feed & Seed

Chemicals • Lubricants • Liquid Feed

Veterinary Health Supplies

Supplies for the Home & Garden

Muck Boots • Case Knives • OK Steel Wire & Fencing
Big Smith Overalls • Walls Work & Hunting Clothing

**WE ARE AUTHORIZED DEALERS OF
CARGILL NUTRENA FEEDS • TINDLE FEEDS
NUTRENA & DIAMOND PET FOODS**

MON-FRI 7:30-5:30 & SAT 8-1

Best Wishes For A Successful Fair!



City of Van Buren, Arkansas Joe Hurst, Mayor

1003 Broadway · Van Buren, Arkansas 72956

(479) 474-1541

CITY OFFICIALS:

PHYLLIS THOMAS
City Clerk - Treasurer

CHARLES BAKER
District Judge

JACOB HOWELL
City Attorney

City Council

Matt Dodson

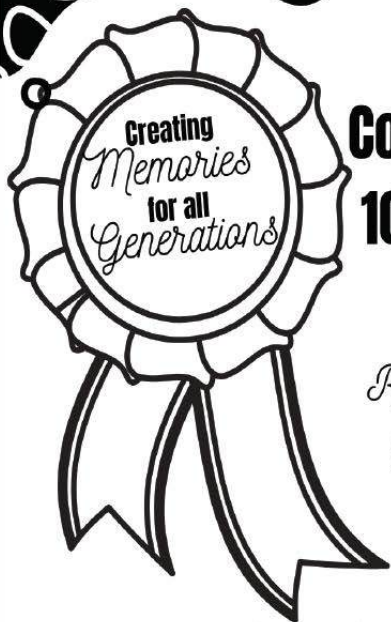
Mike Kneeland

Jim Petty

Kathryn Osburn

Kenny Bell

Tyler Wood



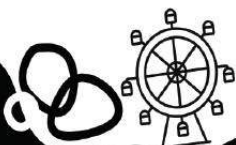
Congratulations on 100 Years of Fun!

*River Belles Extension
Homemakers Club*

Are you looking for a way to get involved in Crawford County? Maybe you want to learn new skills, make new friends, or give back!

Join the River Belles EHC Club!!

Monthly Meetings on the 2nd Monday
Call 479-474-5286 for more information.





BIERY HILL PHOTOGRAPHY

Senior * Family * Specialty

Elizabeth Biery - 479-461-1237



Mention this
add at booking
and save 10%!



Ken & Zach Belt - Owner Operator
1800 Airport Road
Ozark, Arkansas 72949

Oil Changes, Fuel Filters, Tire Rotations
CarFax Service Center



MEET YOUR MORTGAGE LENDER




**KIM
SMITH**

Call me for all your home loan needs at (479) 670-3406
We service 99% of our mortgage loans locally.

408 HWY 64 West, Alma
arvest.com/home4me

ARVEST[®]
BANK

NMLS# 1199652

Loans subject to credit approval. Member FDIC  Equal Housing Lender



Citizens
BANK & TRUST COMPANY

PO Box 469 / Van Buren, AR 72957

479-474-1201

MAIN OFFICE: CLOVERLEAF PLAZA DOWNTOWN: 7th & BROADWAY

NORTHRIDGE: #4 NORTHRIDGE NORTH HILLS: HWY 59 & POINTER TRAIL

MOUNTAINBURG: HWY 71 NORTH ALMA: HWY 64 & 71

CEDARVILLE: 8828 N HW 59

www.thecrawfordcountyfair.com

- 107 -

An Arkansas Century Farm

Sandy Branch Farm



Established 1885

Pam Epperson and the late Thomas Epperson
Owner

Michael and Kendra Smith
Operators

Proud Supporters Of The Crawford County Fair!

www.thecrawfordcountyfair.com

I-40 Livestock Auction



3050 temple road
ozark, ar
479-667-3737

The logo consists of the letters "JL" in a stylized, white, serif font, set against a solid black square background. The "J" and "L" are connected at the top and bottom, with a vertical bar between them.

JL

Jernigan
Law
Group

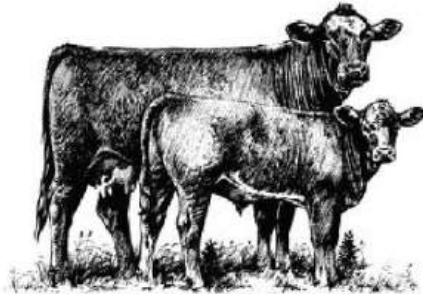
Personal Injury · Criminal Law · Family

2501 Fayettevill Road
Van Buren, AR 72956
479.474.0700

info@jerniganlawgroup.com

King Livestock

Est. 1978



***Kerry & Reba King
Mulberry, AR***

proud supporters
of the
crawford county
fair

Thank you

*Without our sponsors and
volunteers, we could not
do what we do!*



<https://www.bostonmtn.com>



Alma Rotary Club

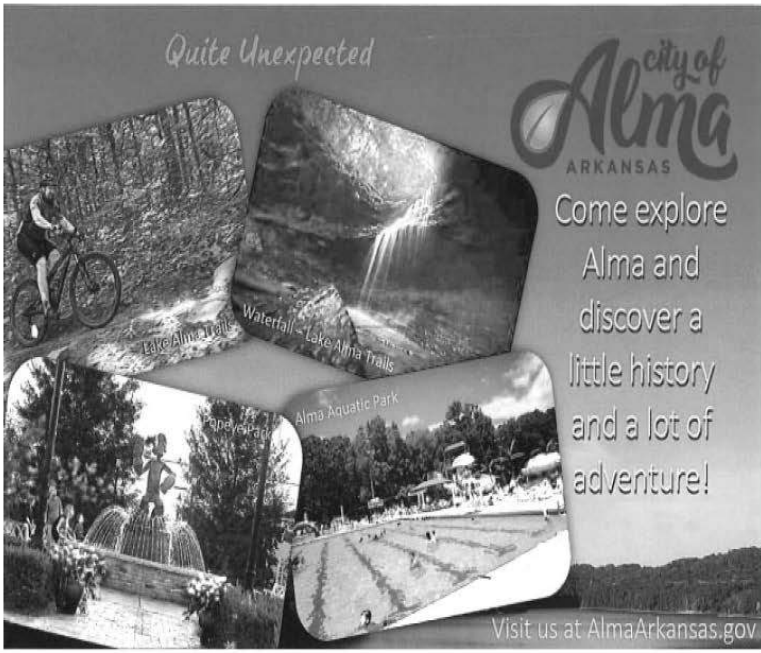
Its all about... Commmunty Service!

Alma Rotary Club welcomes all visitors and prospective new members to join us for lunch the first and third Wednesday of each month at noon.

We meet at the Alma Community Building, at 114 Collum Lane East in Alma.

Please come and join us for great food & wonderful fellowship.

Quite Unexpected

A collage of four black and white photographs showcasing local attractions in Alma, Arkansas. The top-left photo shows a person on a bicycle on a trail, labeled "Lake Alma Trails". The top-right photo shows a waterfall, labeled "Waterfall - Lake Alma Trails". The bottom-left photo shows a fountain with a statue, labeled "Alma Aquatic Park". The bottom-right photo shows a large swimming pool, labeled "Alma Aquatic Park".

city of
Alma
ARKANSAS

Come explore
Alma and
discover a
little history
and a lot of
adventure!

Visit us at AlmaArkansas.gov

ADVERTISERS

A+ Computer Repair	51
Airport Road Express Lube	117
Alma Animal Clinic	84
Alma Farm Supply	113
Alma Rotary Club	123
Arkansas Democrat Gazette	6
Arkansas Oklahoma State Fair	60
Arkansas Tech University - Ozark	44
Arkansas Valley Electric & Wave Rural	96
Arvest - Kim Smith	118
Biery Hill Photography	116
Boston Mountain Webworks	16
Breeden Dodge	17
Brister Law Firm PLLC	IBC
Citizens Bank & Trust Company	88,118
City of Mulberry	75
City of Van Buren	114
Coleman Pharmacy	100
Cozy Quilts	79
Crabtree Farms	43
Crawford County Abstract	8
Crawford County Cattlemen's Association	109
Crawford County Library System	112
Crawford County Republican Party	104
Dickerson's Hardware	46
Farm Bureau	97
Farm Credit of Western Arkansas	35
Farmers Cooperative	IFC
Farmers Insurance - Don Jenkins, Agent	108
Geno's Pizza	14

Georgia Ridge Farms	63
I-40 Livestock Auction Ozark	120
Jared Williams Farm	111
Jernigan Law Group	120
Key's Butcher Shop	111
King Livestock	121
MAE Farms	112
Mastercraft Boiler	81
Meadors Lumber Company	31
Medlock & Gramlich Law Firm	56
Mulberry Lions Club	106
NWS Welding	62
One Life Insurance - Smanatha Stanley	84,108
Ozark Natural Designs	128
Pizza Den	39
Pointer Trail Animal Clinic	24
Pro Claim	31
Rice Custom Meats	110
River Belles Extension Club	115
S-K King Ranch	92
Sandy Branch Farm	119
Simon Family Dentistry	29,BC
Tax Break	11,74
Tender Rock Hollow Knives	24
Triple D Farms	129
Today's Bank	9
UA Division of Agriculture Extension Service	35
Uptown Frills	44
Urrutia Dental	82

Dear Crawford County Fair Book readers,

I extend my sincerest apologies for any errors, omissions, and imperfections that may have occurred in the pages of this year's fair book publication. I take full responsibility for any oversights, big or small, and acknowledge that they fall short of the quality we strive to deliver. However, I firmly believe that every misstep is an opportunity to learn and grow.

Very truly yours,

A handwritten signature in blue ink, appearing to read 'SB', is written over the text 'Very truly yours,'.

Sean Brister

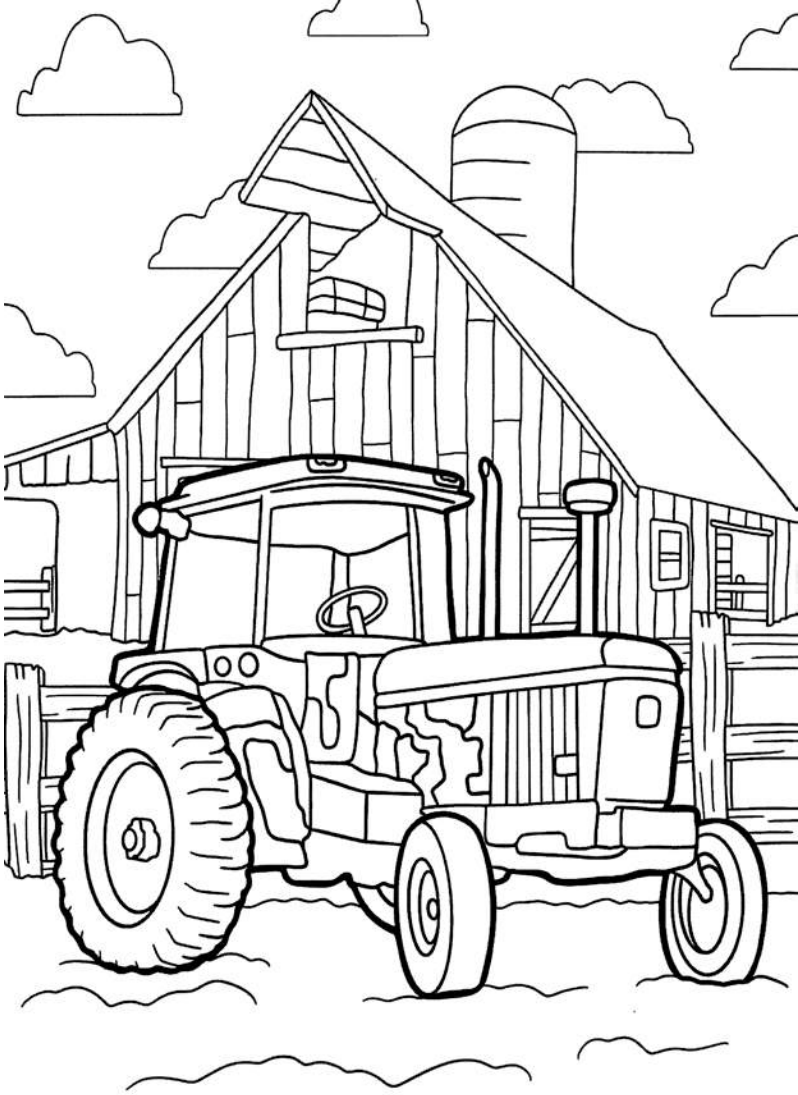
COLORING CONTEST

Turn in coloring sheet to Debra LaRue in the Commercial Building at the Scentsy Booth. Ages 3-10. Winner will be contacted by email.

Age: _____

Name: _____

Email: _____





**OZARK NATURAL
DESIGNS L.L.C**

**CUSTOM WOODWORKING
AND
LASER ENGRAVING**

Kevin Partain
1218 Bluff St.
Alma, Ar
72921

kpartain@gmail.com
479.719.7315

www.etsy.com/shop/OzarkNaturalDesigns



Triple  Farms



**Proud supporters
of the
Crawford County Fair**