

Est. 1979

Harrison County Gem & Mineral Society, Inc.



Gulfport Gems

Volume 46

October / November 2025

Number 10 - 11



Member of the Southeast Federation of Mineralogical Society

P.O. Box 10136
Gulfport, Ms. 39505

www.facebook.com/gulfportgems
Website: www.gulfportgems.org

A message from the President...

Dear Members,

I want to thank everyone who attended this past meeting. Everyone enjoyed the workshops and special thanks to the instructors for volunteering to teach.

We purchased some new equipment for the club this past month and Nicole should be bringing them to the meeting for everyone to take a look at.

Reba and Buddy are on the mend, which is great news! Keep them in your thoughts and prayers for a speedy recovery!

To all our new members and visitors that attended, welcome, I hope we'll see more of you in the future!

Helen and Gretchen will be demonstrating how to make resin jewelry. Kits will be available for \$5.

Election this month. Members for 2026 Board will be sworn in at the December meeting / party.

Hope to see everyone on the 15th!

Sincerely,

President Peter M.



Notes from the editor . . .

Meeting: November 15, 2025 at 9am
Herbert Wilson Recreational Center
Potluck lunch . . . Bring a dish

Door Prizes: Please bring a door prize to donate. See Cindy Braden

Gems of the Month:

November: Topaz & Citrine
October: Opal & Tourmaline

Show & Tell: Anything you have to share with the club, Please bring.

Workshops:

Resin Demo By Helen & Gretchen

Program: N/A

[2026 Board Elect: See page 3](#)

2025 Workshop Instructors needed

Please Contact Workshop Chairman,
Shirley at [228-594-9673](tel:228-594-9673)

Msrobinson2u@icloud.com

Show Chairman: Helen & Kathy

Email: gulfportgems.show@gmail.com

Please continue to check our website and Facebook pages for updates.

Workshops are posted on both.

www.gulfportgems.org

www.facebook.com/gulfportgems



October 18, 2025

Called to Order Time: 1:00 p.m. by President Peter M.

Members in attendance: Shirley R.; Peter M.; Sue S.; Iris L.; Donald L.; Gail B.; David B.; Sue W.; Beverly B.; Niccola H.; Rosalind N.; Karen W.; Nicole G.; Leslie J.; Sara M.; Morgan M.; Doris E.; Sheryl R.; Allan E.; Cynthia B.; Jina M.

The stone of the month was opal. No specimen were brought in.

Program: None

Show and Tell: Peter reported that he was able to go to a topaz mine in Utah - Topaz Mountain Adventures - and brought specimen for all to see. He explained that the topaz is usually colored champagne, but when it is exposed to sunlight, the topaz turns white. If the topaz is fashioned into jewelry and worn at night, it can retain its champagne color. Peter also explained how with heat/radiation treatment, sometimes color can be brought back to the topaz.

The mine's owner, Rhonda, talked to Peter about their mine and efforts to get young people in the area involved and she told Peter she would talk to him and give him materials regarding their efforts to increase membership and also with the youth in the area. Peter asked that if anyone had any ideas to pass them along to the group. Sheryl brought in some cut/faceted loose gemstones to show everyone and some stone cabochons.

Meeting: The September minutes were not sent out to all members and was not available. Leslie made a motion to postpone the review and vote on the September minutes. Roz seconded the motion. There were no objections. Motion carried.

Treasurer's Report: By Nicole G. - The General account balance is \$XXX. Nicole noted that \$XXX was spent for a 3 year fee for the Club's web page. The Show account balance is \$XXX. Nicole noted that a \$XXX refund was paid to a vendor. \$XXX was spent from the Equipment account and the balance is now \$XXX from the show which comes to \$XXX. Nicole spent \$XXX for pantry items and \$XX on Webstar. The equipment account is \$XXX. The CD was the same \$XXX. Leslie made a motion to accept the July treasurer's report. It was seconded by Julie and there were no objections. Motion carried.

In the CD account, there was a \$XX penalty fee assessed making the balance \$XXX, and the CD is earning 3.75% for the next eight months.

Allan made a motion to accept the Treasurer's report. Niccola seconded the report. There were no objections. Motion carried.

COMMITTEE REPORTS:

Workshops: Shirley asked that anyone interested in giving a demonstration or doing a workshop to get with her.

October's workshops: Sue S. taught a spider class which could be used as a broach, pendant, or bracelet and Sue w. taught a framed pendant.

In November, Helen and Gretchen will have a demonstration on using resin and will then have a class. Jina will have a demonstration on making a wire wrapped cabochon. Peter said he would show a demonstration on how to make a crushed stone inlay ring and how to use the grinder when making the crushed stone inlay ring.

Newsletter: No report.

Facebook: Don reported a problem trying to get into Facebook and said it was still pending approval - that will be relayed to Laura T. approval - that will be relayed to Laura T.



October Minutes Continued from Page 2

Webmaster: Leslie requested that anyone who has a project send her a list of materials needed and tools needed, she will make sure it gets in the newsletter and on the web page.

Equipment: Peter reported that the Club has gotten some new equipment per previous motion ruled on. The Club now has a double barrel tumbler with shot to polish items made or for rocks; we have two jump ring makers as well as a rotary tool to cut the jump rings. This will be very helpful in making a large amount of different size jump rings and will be especially helpful in making chain maille in the future. Peter will take the machines home and learn to work with them and will then do a demonstration. He also mentioned there was some walnut grit to help polish items.

Sunshine: Sheryl reported that some birthday cards had been sent out and some were hand delivered at the meeting today and wished everyone a happy birthday who had one already this year.

Show: No report.

Librarian: No report.

Old Business: No report.

New Business: Thanksgiving and Christmas were discussed. The majority of people wanted to have Thanksgiving at the Rec. Center. Nicole said she would make a sign up sheet for both and e-mail it around so people could sign up to bring what they wanted to bring. Allan said he had a roaster if everyone wanted him to roast a turkey.

Split the Pot: Split the pot was \$XX, and Roz won.

Door Prizes: There were lots of door prizes and members were asked to bring any door prizes they have to the next meeting.

Adjournment: Motion was made by Don and seconded by Nicole that the meeting be adjourned. There were no objections and the meeting adjourned at 2:13 p.m.



Nominating Committee for 2026 Board Elect

President	-	Peter M.
Vice president	-	Lisa F.
Secretary	-	Sheryl
Treasurer	-	Nicole G.
Director	-	Beverly B.

November - Election / Paper ballot for Slate of officers
 December - Sworn In of new 2026 board

Harrison County Gem & Mineral Society September 20, 2025 Minutes

Called to Order: 1:04pm By President Peter M.

Members in attendance: (27) Jina M., Peter M., Sue S., Lisa F., Niccola H., Rosalind N-D., Beverly B., Karen W., Helen D., Nicole G., Doris E., Sara M., Gladys D., Leslie J., Christel M., Madeline M., Abilgail M., Andrew M., Kay L., Gretchen B., Sharon G., Donald P.,

GUEST: Raven B., Addalyn M., Aiden B., Arielle P., Morgan M.,

Gem of the month: Sapphire

Program : None

Meeting: The July minutes needed to be accepted because they were not at the August meeting. Motion to accept July minutes by Lisa F. and second by Leslie J. The August minutes had one correction. It was on JET BEADS. This is the company to order through when placing an order with Fire Mountain. Also, Beverly won *Split the Pot* for August. It wasn't in the newsletter because the editor did not have the information. Motion made by Nicole to accept the August minutes and seconded by Beverly B.

Treasurer: Report by Nicole G.

Bill for \$XX of shot was presented from Laura T. We received .xx cents of interest. The CD expired so Nicole will look for a better rate. All figures are the same, nothing has changed.

Show & Tell: None

COMMITTEE REPORTS

Equipment: No report

Sharon G. donated a large tumbler. Donald will take home our broken saw and try to fix it.

Newsletter: Report by Lisa If you have anything to submit, please do so.

Facebook: No report

Webmaster: Report by Leslie I am caught up except the current newsletter.

Workshop: Report by Shirley ,

October: Sue W. Framed Pendant / Sue S. Spider

November: Resin Demo by Gretchen and Helen

Sunshine: No report

Show: Beverly and Helen to Co-Chair. We have one opening. Beverly has a waiting list. We need to prepare gem trees and start preparing for the show. Lisa will reserve the van. Lisa will get price on monogramming our logo on the aprons. 25-30 count. Price to vote on next month.

Library: Peter has inventory at his house.

Communications

Old Business: We talked about getting a Pepe (\$239.00) or ring cutter. They are identical just a little cheaper from Amazon and without the Pepe name (\$49.00 – 105.00). Lisa made a motion to buy two cheap ring cutters with the blades, rotary tool, and all accessories from Amazon not to exceed \$500.00 max for everything. Beverly seconded it. All were in favor.

New tools for club use have not been bought yet. Reba was to get prices. We need to pass this to someone else since she is in the hospital. It is a five-piece set. It has already been approved to purchase.

Clear templates. Lisa made a motion to purchase templates up to \$60.00 and seconded by Donald. Nicole will pick up a double tumbler from Harbor Freight. It was approved last month along with shot. Peter will investigate bulk shot as we need more than we just bought.

New Business: Nicole said some members want to buy those loops. We have twenty-five left. Sell for \$10.00. Nominating Committee will be Lisa F.

Door Prizes: Won by many

Split the Pot: None

Adjournment: 2:08 pm Motion made by Lisa and seconded by Leslie.



♥ Happy Anniversary

Happy Anniversary

October:

Peter & Bernadette M.
Barbi B.

November:

Gretchen B.



October Birthdays:

Sharon G.
Bernadette M.
Lynn T.
Barbi B.
Lisa P.

November Birthdays:

Julie B.
Cindy B.
Helen Daniel
Joseph Daniel
Sheryl R.
Laura T.
Reba S.
Steven S.

NAME TAGS: If you don't have a name tag, please contact Nicole to order one as everyone needs one. All name tags must be PAID IN ADVANCE before ordering.

Thought of the Day . . .



*The happiness of your life
depends on the
Quality of your thoughts.*

By Marcus Aurelius

WORKSHOPS

Workshop Chairman:
msrobinson2u@icloud.com

Nov. 15, 2025



Shirley Robinson
228-594-9673

Resin Demo

By Helen & Gretchen
\$5.00 to make one



Workshop

Please bring something to work on
if your not taking the workshop.

Volunteers are needed for 2026
Workshops
Show & Tell
Programs

Please consider volunteering!
A program can be
anywhere from 15 to 30 minutes.
Demonstrate how to do something.
Contact Shirley to schedule

Cabbing Workshops - *Equipment Chairman* Cindy Braden - 228-243-2665

*If you are interested in cabbing we have instructors available to teach you.
Time may be limited if other members are waiting to use the machines.*

- ◆ \$3.00 per Day for equipment usage
- ◆ Must be a member (waiver on file)
- ◆ Guest not allowed to use equipment

October's Gem of the Month

FACTS

- ◆ Mineral: Hydrated Silica
- ◆ Chemistry: $\text{SiO}_2 \cdot n\text{H}_2\text{O}$
- ◆ Color: All colors
- ◆ Refractive index: 1.37-1.47
- ◆ Birefringence: None
- ◆ Specific gravity: 2.15 (+0.08, -0.90)
- ◆ Mohs Hardness: 5 to 6.5



Opal

How Opal Forms: Opal is the creation of seasonal rains that saturate dry ground in regions such as Australia's semi-desert "outback." The water soaking deep into the ancient underground rock, carrying dissolved silica (a compound of silicon and oxygen) downward.

Through out the dry periods, a lot of the water evaporated, leaving behind solid deposits of silica. Found in the in the cracks and between the layers of underground sedimentary rock the silica deposits formed opals. Opals contain 20% of its water trapped in its silica structure.

Opals being in two broad classes called precious and common. Common Opals do not display the "play-of-color" as the precious Opals.

Play-of-color is the result of lightwaves that travel between the spheres causing the waves to bend or diffract and as they break up into colors of the rainbow they produce which is called "spectral colors." This occurs in precious opals being it is made up of sub-microscopic spheres stacked in a grid-like pattern—like layers of ping-pong balls in a box.

In 1890 when Australia mines produced Opals commercially it became the world's primary source for the stone.

FACTS



- Mineral: Tourmaline
- Chemistry:
- Elbaite $\text{Na}(\text{Li}_{1.5}, \text{Al}_{1.5})\text{Al}_6\text{Si}_6\text{O}_{18}(\text{BO}_3)_3(\text{OH})_4$
- Dravite $\text{NaMg}_3\text{Al}_6\text{Si}_6\text{O}_{18}(\text{BO}_3)_3(\text{OH})_4$
- Liddicoatite $\text{Ca}(\text{Li}_2\text{Al})\text{Al}_6\text{Si}_6\text{O}_{18}(\text{BO}_3)_3(\text{OH})_3\text{F}$
- Chromedravite $\text{NaMg}_3\text{Cr}_6\text{Si}_6\text{O}_{18}(\text{BO}_3)_3(\text{OH})_4$
- Color: All colors
- Refractive index: 1.624 to 1.644
- Birefringence: 0.018 to 0.040
- Specific gravity: 3.06 (+0.20, -0.06)
- Mohs Hardness: 7 to 7.5

Tourmalines come in one of widest variety of color ranges of any gem species, occurring in various shades of virtually every hue. Many have inspired their own trade names:

- Rubellite is a name for pink, red, purplish red, orangy red, or brownish red tourmaline, although some in the trade argue that the term shouldn't apply to pink tourmaline.
- Indicolite is dark violetish blue, blue, or greenish blue tourmaline.
- Paraíba is an intense violetish blue, greenish blue, or blue tourmaline from the state of Paraíba, Brazil.
- Chrome tourmaline is intense green. In spite of its name, it's colored mostly by vanadium, the same element that colors many Brazilian and African emeralds.
- Parti-colored tourmaline displays more than one color. One of the most common combinations is green and pink, but many others are possible.
- Watermelon tourmaline is pink in the center and green around the outside. Crystals of this material are typically cut in slices to display this special arrangement.

Tourmaline

Citrine

FACTS

- ◆ Mineral: Quartz
- ◆ Chemical composition: SiO₂
- ◆ Color: Yellow to orange to orangy red
- ◆ Refractive index: 1.544 to 1.553
- ◆ Specific gravity: 2.66 (+0.03/-0.02)
- ◆ Mohs hardness: 7



A trace of iron in citrine structure makes it responsible for its color. It is the most popular yellow stone purchased. Natural Citrine is so rare most on the open market is heated treated Amethyst. It's tawny color was confused with Topaz before modern gemology. In the contemporary market, citrine's most popular shade is an earthy, deep, brownish or reddish orange.

Brazil is the largest producer of Citrine. Other sources are Argentina, Madagascar, Zaire, Namibia, Spain, and Russia.

Most heat treated Citrine takes on a deep orange or slightly reddish tint. In general, the deeper colored stones are the most valuable, including those with reddish tints. Lightly colored yellow Citrine can occur naturally but is rare; the intense yellow form is usually irradiated and given the trade name of "Lemon Quartz".

Citrine is a very affordable gemstone, and all its color ranges are not expensive. It is most often confused with orange-yellow Topaz, which is very similar in color and body. Topaz is the more valuable gemstone, and dealers often sell Citrine labeled as Topaz. Several false trade names for Citrine are "Madeira Topaz", "Gold Topaz", and "Bahia Topaz". However, some fine and rare Citrine gemstones have a pure yellow color that is rarely duplicated by golden Topaz.

Citrine can be found in large crystals, and flawless gems of all sizes have been cut. A natural mixture of purple Amethyst and golden Citrine has been coined with name "Ametrine".

Treatment & Enhancements:

Virtually all gem Citrine is not naturally colored, but rather colored from heat treatment of Amethyst. Heating Amethyst at about 750 degrees Fahrenheit will produce a mild yellow color, and heating to about 1700 degrees produces deep orange to reddish colors. Most heat treated Citrine has a reddish tint. The intense yellow shades often known as Lemon Quartz are usually formed by irradiation of Quartz. Synthetic Citrine gems are also produced using the hydrothermal method, and these are usually in intensely vivid colors.

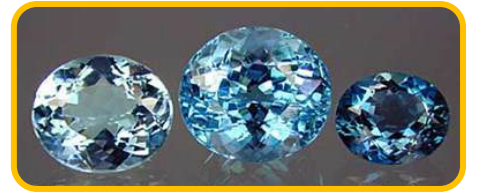
Varieties:

- ◆ **Golden Citrine** - Citrine with a golden yellow color.
- ◆ **Lemon Quartz** - Lemon Quartz is a light to dark yellow Citrine, distinguished from most Citrine by lacking orange, brown, or reddish tints. More often though it is clear Quartz that is irradiated to produce an intensely colored yellow gemstone. Lemon Quartz has recently experienced a popularity increase in the gemstone market.
- ◆ **Madeira Citrine** - Brownish-red to orange-red Citrine.
- ◆ **Palmeria Citrine** - Citrine with a bright orange color.
- ◆ **Yellow Citrine** - Citrine with a lemon yellow color. May also be called "Lemon Citrine" or "Lemon Quartz".



Sources: gia.edu, Wikipedia, Palagems.com, topfenz.com, exploringlifemysteries.com, thejewerblog.wordpress.com, topaz-rings.com, minerals.net, valentinmagro.com, nationaljeweler.com, gemselect.com, royalcollections.es

Topaz



FACTS

- Mineral: Topaz
 - ♦ Refractive index: 1.619 to 1.627
 - ♦ Specific gravity: 3.53
 - ♦ Color: Yellow, orange, brown, pink to red to purple red, blue, light green and colorless
- Chemistry: $\text{Al}_2(\text{F,OH})_2\text{SiO}_4$
Birefringence: 0.008 to 0.010
Mohs Hardness: 8

Contained within the chemical makeup of this silicate gemstone are aluminum and fluorine. A vast number of minerals are also recognized as being “aluminum minerals” like topaz, these include: ruby, beryl, emerald and jadeite.

The element chromium causes natural pink, red, and violet-to-purple colors in topaz. At the atomic level, imperfections in topaz crystal structure can cause yellow, brown, and blue color. A common topaz color being brown is mistakenly called “smoky quartz.”

Topaz is allochromatic, which means that its color is caused by impurity elements or defects in its crystal structure rather than by an element of its basic chemical composition. It is also pleochroic, meaning that the gem can show different colors in different crystal directions.

The color varieties are identified simply by hue name: Blue topaz, pink topaz, and so forth—but there are also a couple of special trade names. Imperial topaz: a medium reddish orange to orange-red is the gems most expensive colors.

Sherry topaz (a.k.a. Precious Topaz): named after the sherry wine—is a yellowish brown or brownish yellow to orange. Stones in this color range are often called precious topaz to help distinguish them from the similarly colored but less expensive citrine and smoky quartz.

History: The name topaz comes from Topazios, the old Greek name for a small island in the Red Sea, now called Zabargad. Before modern mineralogy Peridot was confused with topaz. They never found topaz on the island but it was a source for Peridot. Scholars trace the origin back to Sanskrit (an ancient language of India) and the word topas or tapaz, meaning “fire.”

Ancient Greeks believed that topaz gave them strength. During the Renaissance in Europe (the period from the 1300s to the 1600s) people thought that topaz could dispel anger and break magic spells. Many people in India for centuries believed that topaz worn above the heart assures long life, beauty, and intelligence.

The name for “Imperial Topaz” originated in the nineteenth-century Russia. At the time, the leading source was the Ural Mountains. The pink gemstone mined there was named to honor the Russian czar. Ownership of the gem was restricted to the royal family. In 1768 the royal court in Portugal celebrates the discovery of the imperial topaz.

Enhancements: Several varieties are typically enhanced. Most common is the combination irradiation/heat treatment that produces blue topaz. For this treatment, colorless topaz is irradiated, turning it brown. The stone is then heat treated, which turns it blue. While the brown color is generally unstable, fading with prolonged exposure to sunlight, the blue color is generally stable under normal wearing conditions.

There are three main flavors. The first, a “sky” blue, is produced by gamma rays (cobalt 60). Deeper “Swiss (a.k.a. ‘windex’)” and “London” blues are produced by high-energy electrons (cyclotron) or nuclear radiation. In the latter case, the stones must be allowed to cool down to safe levels of radioactivity before being sold which takes months up to two years.

Another treatment seen on occasion with topaz is bulk diffusion, where stones are heated for long periods surrounded by cobalt. This drives the cobalt into a thin layer at the surface, turning it green to blue. The layer is extremely thin. Finally, some topaz is coated with metallic oxides, similar to the coatings on camera lenses. This produces various colors and rainbow-like reflections, but the coatings are easily scratched. The material has been marketed under the name “rainbow” topaz.



Bench Tips from Brad

INVENTORY RECORD

In an ideal world each of us has a complete pictorial record of all pieces of jewelry in our inventory. We use the pics for marketing, and we use the record for insurance. We use it to remember which items have been sent out on consignment, or we use it to mark which items we're taking to a show. And eventually, we note in the record the pieces that have sold.

Unfortunately, we don't always have time to take good pictures of each piece for a detailed inventory. In situations like this I've been able to make a quick group shot with the help of a smart phone, a camera, a scanner, or a color copier. The quality is more than sufficient to accurately identify the pieces.

TAPERED REAMERS



A tool you don't see often these days is a tapered reamer. They're particularly useful for making an irregular hole round or for enlarging a hole to an exact diameter. For example, the small set in the yellow pouch is for holes in the range of 0.3mm to 2.5mm. They are great for sizing a tube to fit a hinge pin. Other times when I'm drilling a hole for riveting sheet metal and can't find the exact size drill, I simply drill the holes with a slightly smaller bit and enlarge them with a reamer until the wire just fits.

For larger hole sizes in sheet metal up to 14 ga, I really like the reamer with the black handle. It makes quick work of sizing holes from about 3mm to 12mm. You can find them in well-equipped hardware stores.

You may never use the large diameter reamers, but when sawing out some rings from 4mm thick sheet, I found they worked well for rounding and sizing the hole.

Making jewelry involves a multitude of skills, intricate hand work, and a lot of problem solving. In this series Books in this series help to:

- >Broaden your metalworking skills
- >Improve productivity at the bench
- >Save money on tools and supplies

You'll find hundreds of low cost and really practical tips and techniques that the author uses in his work and teaches in his classes and workshops.

<http://amazon.com/dp/B0BQ8YVLTJ>



Smart Solutions for Your Jewelry Making Problems

<http://amazon.com/author/bradfordsmith>



www.bradsmithjewelry.com
Articles are copyrighted by Brad Smith





Southeast Federation News

S.F.M.S. Newsletter

Subscription to Lodestar is FREE electronically

Email: sfms.lodestar@gmail.com Or

Editor: **Cindy Reed**

Can be read online:

<http://www.amfed.org/sfms/index.html>

www.amfed.org

American Federation News



A.F.M.S. Newsletter

Subscriptions are \$5.00 per year

Checks should be made payable to "AFMS"

AFMS Central Office

Cheryl Nearly

42 Jefferson Avenue

Patchogue, NY 11772-1008

Centraloffice.amfed@gmail.com PH: 516-449-5341

SFMS 2025 Annual Convention

March 1-3, 2025

Live Oak, FL

AFMS 2025 Annual Convention

TBA

William Holland School of Lapidary Arts

706-379-2126

Register Now at:

www.lapidaryschoolregistration.org

Federation Week Jun 8 - 14, 2025

Classes are subject to change

WILDACRES RETREAT

828-756-4573

Website @ www.wildscres.org

registrarwildacres@gmail.com Claudia Erwin

When scheduling keep in mind, workshops are subjected to change without notice.

Please check the website for changes.

Federation Weeks August 11th -17th

2nd Week September 15th - 21st

A.L.A.A.

Have you joined the **American Lands Access Association** (ALAA)? Help is needed. Please volunteer!

The organization was founded to promote and ensure the right of the amateur hobby collecting, recreational prospecting and mining, and the use of public and private lands for educational and recreational purposes and to carry the voice of all amateur collectors and hobbyists to our elected officials, government regulators and public land managers.

Individual dues are \$25 per year; clubs \$50 per year.

A quarterly newsletter is sent to all members.

For more information,

Visit <http://amlands.org>



Doug True, President

Nearby Gem Societies



Ms. Gulf Coast Gem & Mineral Society

www.mgcmgs.com

Meeting: 2nd Saturday of the month



Mobile Rock and Gem Society

www.mobilerockandgem.com

Meeting: 2nd Tuesday of the month



Gem & Mineral Society of Louisiana

Meeting: 2nd Monday of the month

Contact: Levette @ 504-214-3205

FIELD TRIPS

Dixie Mineral Council



For a monthly list of field trips, visit their website.

Members Only

<http://www.amfed.org/sfms/index.html>

Other Interests:

International Society of Glass Blowers

Visit site if you like Lampworking

Website: www.isgb.org



Harrison County Gem & Mineral Society Information



Officers 2025

President - Peter Mastroianna h1ghspeed@mac.com
Vice President - Lisa Fitch lapidaryarts@hotmail.com
Secretary - Sheryl Rogers sdr@frslaw.com
Treasurer - Nicole Green nfouasnon@gmail.com

Directors

Reba Shotts (3 yr.) Buddynrebashotts@bellsouth.net
 Jina Martin (2 yr.) jinamartin@hotmail.com
 Sue West (1 yr.) msuewest@bellsouth.net

Committee Members

Show Chairman

Helen Daniels Helen.daniel@gmail.com
 Karen Williams KDAW1991@gmail.com

Workshop Chairman

Shirley Robinson msrobinson2u@icloud.com

Equipment Chairmen

Cindy Braden 228-243-2665

Field Trip Chairman

Sharon Greer 3catsgreer@bellsouth.net

Librarian Chairman

Sue West msuewest@bellsouth.net

Newsletter Editor

Lisa Fitch lapidaryarts@hotmail.com

Facebook Chairman

Laura Tate wanderingmsn@gmail.com

Sunshine

Sheryl Rogers sdr@frslaw.com

Webmaster Chairman

Leslie Jancovich ljancovich@gmail.com

Assistant Webmaster

Nicole Green nfouasnon@gmail.com

Southeast Federation of Mineralogical Societies

Mississippi State Director

Meetings / Workshops

Herbert Wilson Recreational Center
 3625 Hancock Avenue
 Gulfport, Ms. 39501

3rd Saturday of each month

9 am - 12 pm	Workshop
12 pm - 1 pm	Lunch
1 pm - 2 pm	Meeting

Directions: Coming from Pass Road or Hwy. 90 turn on Courthouse Road.

Turn next to Hancock Bank on 33rd Street until you reach Hancock Street. Look to your left and you will see the Herbert Wilson Recreational Center. We are on the left side of building thru the gates.

Come for fun . . . Stay to play!

Visit our Website and Facebook page:

www.gulfportgems.org or
<https://www.facebook.com/gulfportgems>

2025 MEETING DATES

Jan 18th	May SHOW 17th & 18th	
Feb 15th	June 21st	Sept 20th
Mar 15th	July 19th	Oct 18th
Apr 19th	Aug 16th	Nov 15th

Dec 20th Christmas Party

Newsletter Editor

Lisa Fitch

Submit newsletter articles to:

lapidaryarts@hotmail.com



Copyright 2024 Harrison County Gem & Mineral Society Newsletter known as Gulfport Gems. All rights reserved. Especially those items that are specifically copyrighted by their authors. Unless otherwise credited, articles are by the editor.

Articles and minutes are due by the last day of each month



Membership Form

Contact Our Treasurer: Nicole Green (228) 344-8066 **Email:** nfouason@gmail.com



HARRISON COUNTY GEM & MINERAL SOCIETY, INC. MEMBERSHIP APPLICATION		
APPLICANT INFORMATION SINGLE \$20.00 18 YEARS OF AGE		
Name:		Email:
Date of birth (Mo/Day):	Anniversary: (Mo/Day)	Cell Phone:
Current address:		Home Phone:
City:	State / Zip Code:	Work Phone:
CO-APPLICANT / SPOUSE INFORMATION FAMILY \$30.00 TWO ADULTS & ALL MINORS UNDER 18 YEARS OF AGE/AT SAME ADDRESS		
Co-Applicant / Spouse:		Email:
Date of birth (Mo/Day):	Cell Phone:	Work Phone:
JUNIOR INFORMATION JUNIOR \$10.00 UNDER 18 YEARS OF AGE ☆ SPONSORED BY AN ADULT		
Name	Birthday (Mo/Day/Year)	Relationship:
Name	Birthday (Mo/Day/Year)	Relationship:
Name:	Birthday (Mo/Day/Year)	Relationship:
Name	Birthday (Mo/Day/Year)	Relationship:
☆ EMERGENCY CONTACT INFORMATION ☆		
Name:		
Relationship:	Home Phone:	Cell Phone:
INTEREST INFORMATION		
Hobby Interest:		Jewelry Interest:
(Each applicant initial interests)		
<input type="checkbox"/> Fossils <input type="checkbox"/> Minerals <input type="checkbox"/> Lapidary (<input type="checkbox"/> Cabbing, <input type="checkbox"/> Faceting, Etc.) <input type="checkbox"/> Field Trips (Creeks, Gravel pits, Mines, Etc.) <input type="checkbox"/> Special Interests _____		<input type="checkbox"/> Beading <input type="checkbox"/> Kumihimo <input type="checkbox"/> Pearl Knotting <input type="checkbox"/> Other _____
		<input type="checkbox"/> Wire Wrapping <input type="checkbox"/> Chainmaille <input type="checkbox"/> Silversmithing
APPLICATION FEES		
Applications can be mail to: Harrison County Gem & Mineral Society P. O. Box: 10136, Gulfport, Ms. 39505		
Single \$20.00	Family \$30.00	Junior(s) \$10.00 Each
DUES:		\$
Dues: <i>Circle One</i>	NEW RENEWAL	No Proration Deadline: 3rd Saturday of January
TOTAL:		\$
SIGNATURES		
How did you hear about our society? _____		
I authorize HCGMS to use my picture or likeness for society promotions?		YES or NO
I authorize HCGMS to include my information in society listings for members only?		YES or NO
Signature of applicant:		Date:
Signature of co-applicant/spouse (only if for a family membership):		Date:
*Newsletter will be sent via email @ no charge		Modified 11/20/17 LF

Our goal is to promote, educate and stimulate interest in the earth sciences and lapidary arts context.

Shows and Events

11/8-9/2025—MELBOURNE, FL: Canaveral Mineral & Gem Society: 625 E. Hibiscus Ave, Melbourne, FL 32901; Sat. 10-5, Sun 10-4pm. Join us for the 52nd Annual Parade of Gems, hosted by the Canaveral Mineral and Gem Society in sunny Melbourne Florida! This exciting event is perfect for gem enthusiasts, hobbyists, rockhounds, Holiday shoppers and families looking for a unique and educational outing. A local tradition for 52 years Link(s): [https:// www.facebook.com/Canaveralmgs](https://www.facebook.com/Canaveralmgs)

11/21-23/2025—COLUMBIA, SC: Columbia Gem and Mineral Society: Jamil Temple, 206 Jamil Rd. Columbia, SC 29210; Fri & Sat. 10-6, Sun Noon-5pm, Admission: Adults \$7, Military & Dependents and kids 12 and under. Website: <https://www.cgms.rocks/>

11/21-23/2025—MARIETTA, GA: Cobb County Gem and Mineral Society: Cobb County Civic Center, 548 South Marietta Parkway SE, Marietta, GA 30060 (Just 2 Miles from The Big Chicken); Fri-Sat. 10-6 & Sun 10-5, Free Admission and Parking!. Link(s): www.ccgms.org Contact: Jim Haege @ 770-689-9376.

11/22-23/2025—WEST PALM BEACH, FL: The Gem and Mineral Society of the Palm Beaches: South Florida Fairgrounds, Expo Center East. 9067 Southern Blvd., West Palm Beach FL 33411; Sat. 9-6 & Sun 10-5, One day pass is \$11 and a 2 day pass is \$16. Kids under 12 are free. Free parking. Visit www.gmspb.org for more information.

12/13-14/2025—FRANKLIN, TN: Mid-Tennessee Gem & Mineral Society, Inc: Ag Expo Park, 4215 Long Lane • Franklin, TN 37064 20 Miles South of Nashville; I-65, Exit 61; Sat. 9-6, Sun 10 -5, Admission: Adults, \$6.00 (2-Day Pass, \$10.00) • Students 18 & under, \$1.00 Children under 12 with adult, FREE • Scouts in uniform, FREE. Free Parking Website: <http://www.mtgms.org/show.htm>

FOR A COMPLETE LIST OF SHOWS VISIT - amfed.org

[AKS GEM SHOW](#) Presents [New Orleans Bead & Jewelry Show](#)

Pontchartrain Center, 4545 Williams Blvd., Kenner, La. 70065

Admission Fee \$5.00 Hours: Fri & Sat 10am-6pm / Sun 10am-4pm Phone: 504-265-8830

Email info@aksshow.com with inquiries

Visit website www.aksshow.com and GET A COUPON FOR \$1.00 OFF Admission

2025 Jan. 10, 11, & 12 March 14, 15, & 16 June 27, 28, & 29

Sept 5 & 6 November 14, 15, & 16

Save \$1.00 off
admission to any AKS
Gem Show

Offer Expires: no expiration.

This coupon is good for entrance to any AKS Gem Show! ***Be sure to check your inbox for additional savings from our exhibitors.***

[Check our list of shows now...](#)




Gulfport Gems, Editor
P O Box 10136
Gulfport, MS 39505

Address Service Requested



THE OFFICIAL PUBLICATION FOR THE HARRISON COUNTY GEM & MINERAL SOCIETY, INC.

HCGMS 2025 Workshops

<p>January 18</p> <p>Cellini Spiral Christmas Ornament By Leslie J. Cancel</p> <p>Zip Tie Bracelets Sue S.</p> 	<p>February 15</p> <p>Viking Knit By Julie B.</p> <p>Cellini Spiral Christmas Ornament By Leslie J.</p> <p>Happy Valentines February 14th</p> 	<p>March 15</p> <p>Kumihimo By Nicole G.</p> <p>Mardi Gras March 4</p> <p>St. Patrick's Day 17th</p> 	<p>April 19</p> <p>Wired Earrings By Sue W.</p> <p>Happy Easter April 20</p> 
<p>May 17</p> <p>SHOW 17th & 18th</p>	<p>June 21</p> <p>Chainmaille Rose Ring By Lynn / Laura</p> <p>Program -</p>	<p>July 19</p> <p>Program - Tiffany method soldering By Roz</p> <p>2nd - Unfinished Projects</p> <p>Happy 4th</p> 	<p>August 16</p> <p>Wire Weave Cuff By Julie & Reba</p> <p>**Class Full**</p> <p>Unfinished Projects</p>
<p>September 20</p> <p>Chunky Spiral Bracelet By Shirley & Leslie</p> <p>Program - None</p>	<p>October 18</p> <p>Spiders By Sue S,</p> <p>Framed Pendant By Sue W.</p>  <p>Happy Halloween</p>	<p>November 15</p> <p>Introduction to resin By Peter / Helen</p> <p>Program -</p>  <p>Happy Thanksgiving</p>	<p>December 20</p>  <p>CHRISTMAS PARTY</p>