

Est. 1979

Harrison County Gem & Mineral Society, Inc.



Gulfport Gems

Volume 45

December 2024

Number 1



Member of the Southeast Federation of Mineralogical Society

P.O. Box 10136
Gulfport, Ms. 39505

Happy 2024 New Year

www.facebook.com/gulfportgems
Website: www.gulfportgems.org

A message from the President...

Dear Members,

Happy Holidays to all members. We will be having the swearing in of the elected officers at our January meeting.

Please read page 2 from Vonda Echols, SFMS First Vice President about seeking a member to fill the Mississippi State Director position.

Sincerely,

President Allan Elliott



Board Meeting to follow meeting

Please continue to check our website and Facebook pages for updates.

Workshops are posted on both.

www.gulfportgems.org

www.facebook.com/gulfportgems

Notes from the editor . . .

Meeting: January 20th, 2024 at 9am
Herbert Wilson Recreational Center
Potluck lunch . . . Bring a dish

William Holland: *See Federation Page*
2024 Digital Catalog is available and ready for booking. I emailed this to all members on 12/13/23.

Registration opens Dec. 4, 2023. First week of class is March 31, 2024. Fed. Week 6/2/24

Gems of the Month: Garnet

Show & Tell: Please bring your garnets for all to see.

Workshops: Sue West will teach the Victorian Bracelet. Most already purchased kits.

Program: Cindy Braden Equipment and Liability Waivers

2024 Workshop Instructors needed. . .

Please Contact Workshop Chairman,
Shirley at **228-594-9673**
Msrobinson2u@icloud.com

2024 MEMBERSHIP DUES: Applications will be available at the January 20, 2024 meeting

The deadline is the 3rd Saturday in January 2024.

Paying your dues on time is part of the scholarship availability.



Southeast Federation Of Mineralogical Societies
Letter From The Desk Of . . . Vonda Echols, First Vice President
Position Needed - Mississippi State Director

I would like to introduce myself. I am Vonda Echols, First Vice President of the Southeast Federation of Mineralogical Societies. As a member of the executive board, we are looking for a club member from one of our Mississippi clubs to be the State Director for Mississippi. The State Director will be the main contact from the Executive Board and will disseminate information to all clubs in Mississippi. The State Director should be in contact with the clubs to ensure the clubs make the necessary changes to Club Contacts Form as needed. When the club's officers change or contact information changes. The Club Contact Form may be found on the SFMS web page, this is the only way we are able to contact clubs, so you can see this is an important position.

For a full description of the duties of a State Director you may go to Southeastfed.org look on the left side of page ABOUT then BYLAWS, then look for State Directors under Article IV. If you have any questions, please contact one of the Executive Board members.

The other item that the SFMS board would like your members to be aware of is our MAYO Educational Foundations Scholarships. A completed application must be turned in prior to March 31 to be considered. Application forms may be found on the Southeastfed.org web site, look on the left side toward the bottom for the MAYO Educational Foundation, click on more information or apply. Then look on the left side for application. Complete the form and send the completed form back to the MAYO secretary prior to March 31. This is the final deadline. All applications will be considered on an as needed basis. The MAYO Educational Foundation has been awarding scholarships since 1985. Amounts vary due to number of applications and funds available for distributions. I would like to see a student(s) from a college or university in Mississippi receive one of the scholarships offered. If you know of a student or Professor that might know of a deserving student, please pass this information on to them.

Vonda Echols
SFMS - First Vice President



Harrison County Gem & Mineral Society

October 21, 2023

Meeting

Called to Order: By president, Allan Elliott at 12:40pm

Members In Attendance: 19 Nicole G., Allan E., Shirley R., Anna J., Leslie J., Sue S., Laura T., Beverly B., Sue West, Madeline C., Joseph C., Cindy B., Lynn T., Karen W., Gladys D., Sharon G., Lisa F., Rosalind N-D.

Treasure Report: Provided by Nicole Green, Treasurer. September balance over quoted by \$200.00 in September. Entered a \$100.00 check as deposit. \$25.00 paid for Secretary of the State. Balances for checking, Equipment, savings accounts provided. Lynn Tate stated that 50/50 funds go into the equipment fund, adjustments will be made next month. Information gathered from three banks. Went to Regions to discuss the problems we're having, debit card with fee and inability to purchase a CD. Stacy at Regions disputed information, ordered a debit card with no fees attached, requested that it be sent to the Bay Saint Louis branch, and she will call when it arrives. Card has been ordered three times, has never arrived. Nicole recommended that we stay with them, that we purchase a CD. If the club wants to purchase one, decide how much and she will take care of it. Previous CD funds was set aside so that the club could buy a house to have our meetings in. Question? Do we continue CD that is collecting interests with nothing added to it, or do we pick another purpose for it? Information is available to view for anyone that is interested in seeing it. Sue West suggested putting 10K in CD for 14 months at 4.9% interest and leaving 10K in account for other expenses. Sharon Greer made a motion to accept 10K CD for 14 months at 4.9%, Leslie Janovich seconded, motion carried. Lynn Tate stated money need it for the show is at least \$1300, venue \$3350 with a \$500 deposit that rolls over year after year.

Committee Reports

Facebook: per Laura Tate nothing new on Facebook. Would like to have more member participation. Clubs private Facebook page might be a better place to ask questions, offer help, or share information, etc. Private page is strictly from members, requires that you ask to join.

Newsletter: Per Lisa Fitch, nothing new. Forgot to mention board meeting scheduled for today.

Website: Leslie Jancovich and Alan Elliott talked about things that can be added to the website to enhance it. Lodestar (SFMS) is a good source for information.

Equipment: Terry Scott has a few items that might be of interest to the club. Alan Elliott made a motion to purchase equipment (flat lap, saw, and discs) from her for \$100, Leslie Jancovich seconded, motion carried. She is willing to sell some of her lapidary equipment to club members. Nicole Green reimbursed Alan Elliott \$825.36 for the purchase of light and air pump.

Workshops: November workshop Sue West will teach the Victorian bracelet. Kits are sterling silver and Swarovski crystals for \$20 they will have to be ordered so please let Sue know in advance if taking the class. December is the Christmas party. Next January Sue West is teaching cab earrings, Madeleine Collard is teaching a wire wrap bracelet. Nicole Green is teaching Kumihimo in June. Still next instructors for workshops in 2024. If anyone would like to share a workshop let Laura Tate know. Looking also for people to do programs. They do not have to be long or big, 20 - 30 minutes Max.

Sunshine: Lisa Fitch suggested that a sympathy card be sent to Karen Williams due to the passing of her father.

Show Report: We will need to get together to put names down for specific duties. Leslie volunteered to do setup and breakdown only.

Communications

Old Business: Members need to know who is on the slate for board members. Need to put together a committee for the financial audit and property inventory. The committees need to be put together by November and submit it by January 31st.

New Business: Laura Tate contacted the Diamondhead Country Club for the Christmas party. She will save the same area of the bar that we had last year. We can order off the menu, if any of that changes we will have to find somewhere else to go. Menu is available online. Sue W. says there is a holiday boutique at the ESPY center (Yacht Club) in Pass Christian, November 10th and 11th.

Split The Pot: Rosalind N-D. won.

Door Prizes: Allan, Leslie, Gladys, Cindy, Sharon, Joseph, Rosalind, Karen, Sue, Sheldon, Shirley Robinson, Nicole Green and Lynn Tate.

Adjourn: Meeting adjourned at 13:46.

November 18, 2023 Meeting closed due to Building Maintenance

December 16, 2023 Christmas Party

Members in Attendance: 13 Lisa F., Leslie J., Sharon G., Allan E. Sherly R., Cindy B., Rosalind N-D., Karen W., Sue West., Julie B., Laura T., Lynn T., and Shirley Robinson.

Board Elcet for 2024

The following members are the New board elcet for 2024.

Præsident	Allan Elliott	Vicz Præsident	Lisa Fitch
Sæcrætary	Sheryl Rogers	Treasurer	Nicole Green
Dirætor	Jina Martin	Dirætor (2 Year)	Reba Shotts
Dirætor (3 Year)	Sharon Greer		

Congratulations to all
and "Thank You"
for volunteering to serve.

Group Picture December 16, 2023 Christmas Party

Not pictured below in group picture is Sharon Greer and Leslie Jancovich



WORKSHOPS

Workshop Chairman:
msrobinson2u@icloud.com

January 20, 2024

Shirley Robinson
228-594-9673

January's Workshop

Victorian Bracelet

By Sue West

Kits Available by request



Program

Safety of Equipment
Training
Liability waivers
Members Certified

Material List:

- 7' 21ga. Square dead soft Sterling Silver wire
- 3' 20ga. Half-round Sterling Silver wire
- 24 6mm Swarovski Bicones

By Cindy B., Equipment Chairman

Tools:

Chain nose pliers
Flat nose pliers
Permanent marker
Ruler

Round nose pliers
Flush cutters
Painter's tape
A polishing cloth



Cabbing Workshops

*If you are interested in cabbing we have instructors available to teach you.
Time may be limited if other members are waiting to use the machines.*

- ♦ \$3.00 per Day for equipment usage
- ♦ Must be a member (waiver on file)
- ♦ Guest not allowed to use equipment

Contact Equipment Chairman

Cindy Braden - 228-243-2665

Off the menu . . .



Cherry Crunch

By Barbara Saavedra

Ingredients:

- 1-1/2 cups Quick Oats (not instant)
- 1 cup Brown Sugar
- 1/2 cup Butter, softened
- 2 cans Cherry Pie Filling
- 1/2 cup chopped Pecans (or Walnuts)

Instructions:

- 1) Pre-heat oven to 350 degrees
- 2) Place 2 cans of Cherry Pie Filling on the bottom of 9 x 13 pan.
- 3) Blend the softened butter, quick oats, brown sugar and pecans until crumbly. Sprinkle all mixture on top of Cherry pie filling.
- 4) Bake 30 minutes or until golden brown.

If you have a recipe you would like to submit to be printed in our newsletter, please email the editor @ lapidaryarts@hotmail.com



Joseph Collara

Kyleigh Fitch

Lisa Fitch

Leslie Jancovich

Judi Marks

Eddie Tate

Happy Anniversary



Sheryl Rogers

Thought of the Day . . .



Garnet

FACTS



- Mineral: Garnet group
- Chemistry:
- Almandine- $\text{Fe}_3\text{Al}_2(\text{SiO}_4)_3$
- Andradite- $\text{Ca}_3\text{Fe}_2(\text{SiO}_4)_3$
- Grossular- $\text{Ca}_3\text{Al}_2(\text{SiO}_4)_3$
- Pyrope- $\text{Mg}_3\text{Al}_2(\text{SiO}_4)_3$
- Rhodolite- $(\text{Mg}, \text{Fe})_3\text{Al}_2(\text{SiO}_4)_3$
- Spessartine- $\text{Mn}_3\text{Al}_2(\text{SiO}_4)_3$
- Color: All colors
- Refractive index: 1.714-1.888
- Birefringence: None
- Specific gravity: 3.47-4.15
- Mohs hardness: 6.5-7.5

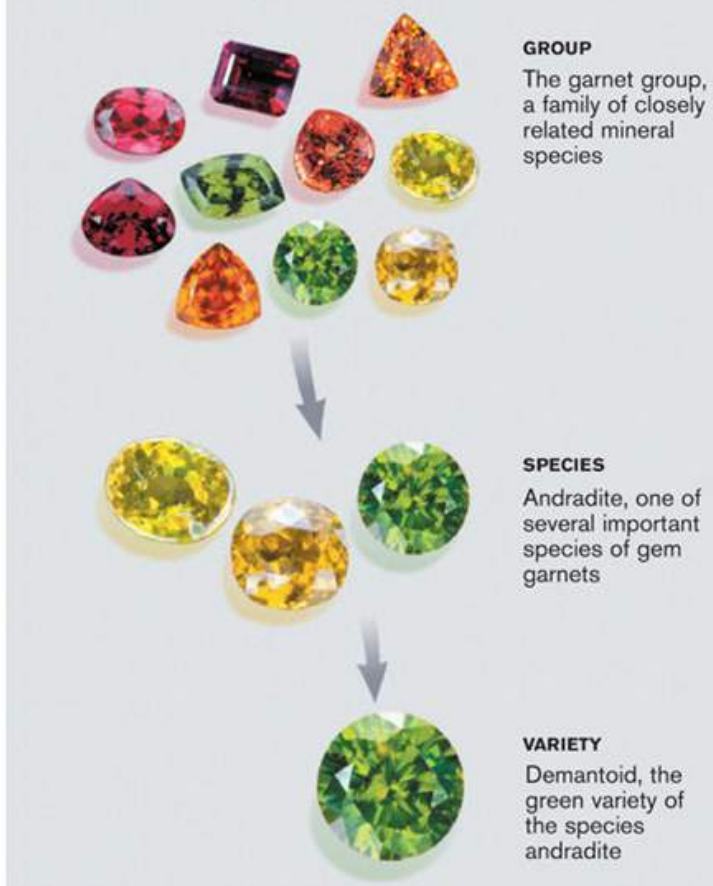
Garnets being a set of closely related minerals that form a group, resulting in gemstones in just about every color. Found in metamorphic rocks (which are rocks altered by heat and pressure) on every continent.

Even though red garnets have a long history, modern gem buyers can pick from a rich palette of garnet colors: greens, oranges, pinkish oranges, deeply saturated purplish reds, and even some blues. The most common and widespread of gems is the red garnet. Not all of the garnets are as abundant as the red ones. A green garnet, tsavorite, is rarer and needs rarer unusual rock chemistries and special conditions to form.

Demantoid is a rare and famous green garnet, spessartine (also called spessartite) is an orange garnet, and rhodolite is a beautiful purple-red garnet. Garnets can even exhibit the color-change phenomenon similar to the rare gemstone alexandrite.

Varying in chemical composition, all garnets have essentially the same crystal structure. We have more than twenty garnet categories, called species, but only five are commercially important as gems. Those five are pyrope, almandine (also called almandite), spessartine, grossular (grossularite), and andradite. A sixth, uvarovite, is a green garnet that usually occurs as crystals too small to cut. It's sometimes set as clusters in jewelry. Many garnets are chemical mixtures of two or more garnet species.

Understanding Group, Species, and Variety



History & Lore: Red garnet necklaces, thousands of years ago adorned the necks of Egypt's pharaohs, and were entombed with their mummified corpses as prized possessions for the afterlife. Signet rings with carved garnets were used to stamp the wax that secured important documents in ancient Rome.

Carbuncle is a term used in ancient times to refer to red garnets and any red stone. Carbuncle was thought to be one of the four precious stones given to King Solomon by God.

In Roman scholar Pliny's time (23 to 79 AD), red garnets were among the most widely traded gems. In the Middle Ages (about 475 to 1450 AD), red garnet was favored by clergy and nobility.

In central Europe around 1500 red garnet's availability increased with the discovery of the famous Bohemian garnet deposits. The source became the nucleus of a regional jewelry industry that reached its peak in the late 1800s.

Sources: gia.edu, Wikipedia, Palagems.com, toptenz.com, minerals.net, thepracticalgemologist.com/gemstones, gemselect.com, birthstones.today

Garnet Varieties:

The six main Garnet minerals types are Almandine, Pyrope, Spessartite, Grossular, Andradite, and Uvarovite. Listed below are other types and varieties.



Color-Change Garnet - Garnet that exhibits a different color in natural and artificial light. Color-Change Garnet is a intermediary mix between the Pyrope and Spessartite (though closer in composition to Pyrope), and presents a color change from a light brownish, yellowish, or greenish in daylight to a pink or purplish color in incandescent light. A few rare specimens may even have a bluish color, which is extremely rare for Garnet.

Demantoid - Olive-green to emerald-green gem variety of Andradite Garnet.

Gooseberry Garnet - Light green to light greenish-brown variety of Grossular Garnet.

Hessonite - Orange to orange-brown, transparent variety of Grossular Garnet.

Imperial Garnet - Light pink, transparent gem variety of Grossular Garnet.

Leuco-garnet - Colorless, transparent variety of Grossular Garnet.

Malaya Garnet - Reddish-orange form of Spessartite Garnet (or more accurately a mixture intermediary between Spessartite and Pyrope) that originates in the Umba River Valley in Tanzania and Kenya. This term is sometimes used as a synonym for Spessartite.

Mali Garnet - Garnet gemstone from the African country of Mali that ranges in color from green to yellow to brown (though most often a greenish-yellow). The deposit of these Garnets was discovered in Mali in 1994, and this form of Garnet is a relatively new gemstone. The scientific classification of the Mali Garnets are not clearly identified; they can be either Grossular or Andradite, though are usually an intermediary form closer in chemical structure to Grossular.

Mandarin Garnet - Bright orange to orange-red Spessartite Garnet, originating from the African countries of Namibia & Mozambique.

Melanite - Lustrous, opaque black or very dark red variety of Andradite Garnet.

Mint Garnet - Grossular Garnet with a light-mint-green color.

Mozambique Garnet - Red Garnet from the African country of Mozambique, which produces fine quality Garnet gemstones. Mozambique Garnet is usually Almandine, but may also be Pyrope.

Raspberry Garnet - Raspberry-red variety of Grossular Garnet.

Rhodolite - Rose-red form of Garnet with a light color or more purplish color than typical Garnet gemstones. It is usually an intermediary variety between Pyrope and Almandine, though more closely towards Pyrope in composition.

Star Garnet - Form of Almandine Garnet that exhibits asterism in the form of a four-rayed star.

Tangerine Garnet - Light orange to orange-yellow Spessartite Garnet, originating from the African countries of Namibia & Mozambique.

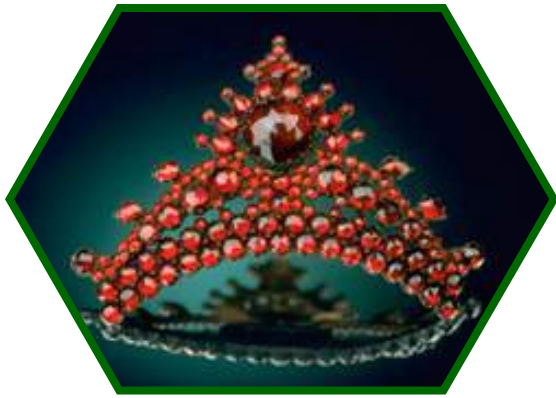
Topazolite - Yellow to brownish-yellow variety of Andradite Garnet.

Tsavorite - Green to emerald-green transparent variety of Grossular Garnet from Africa.



“Antique Pyrope Hairpin”

Smithsonian National Museum of Natural History



Brooch: Dates From the Third Quarter of the 19th Century.
Earrings: This Art Nouveau Style First Appeared in Individual Creations of Designers Rather Than in Industrial Mass Production.

Brooch w/Dangle: An Example of the Mass Produced Items Typical of the Bohemian Garnet.

(Photo Courtesy The National Czech & Slovak Museum & Library)



11.63 ct. Namibian Demantoid

large brilliant cut garnet

It was an exceptional stone of intense vibrant green with a touch of blue. The original rough weighed approximately 46 ct—about 9 grams—making the yield a little over 25%.

This is an exceptionally large gem for Namibia's Green Dragon mine, where the bulk of production is suitable for small calibrated gems.

Namibian demantoid was first discovered in the 1990s.

“The Warrior Stone”



Largest

35,000 Kilograms

The largest documented garnet was found in Norway and measured 2.3 meters,

10 cubic meters in volume & weighed 35,000 kilograms.

Shades of Garnets





Bench Tips from Brad

Mini Drill Press



If you find yourself drilling a number of small holes for your work, you might want to look at the small, inexpensive drill presses now available. They take up just minimal space on your bench and are always ready to give you nice straight holes. Some models even have a variable speed control. I've been very pleased with a low-priced one that's been well-used in my classes for over a year.

Because these machines are only a foot high, they're limited as to the size of workpieces that can fit into the machine and the size of the drill bits you can use. But I've had no problems with drill bits up to about 3/16" (4.5mm), even drilling steel.

The machines are sold by a number of companies. If you do get one, be sure to buy a spare belt because they are generally not available at local hardware stores.

Making jewelry involves a multitude of skills, intricate hand work, and a lot of problem solving. In this series Books in this series help to::

- >Broaden your metalworking skills
- >Improve productivity at the bench
- >Save money on tools and supplies

You'll find hundreds of low cost and really practical tips and techniques that the author uses in his work and teaches in his classes and workshops.

<http://amazon.com/dp/B0BQ8YVLTJ>



Smart Solutions for Your Jewelry Making Problems

<http://amazon.com/author/bradfordsmith>

www.bradsmithjewelry.com

Articles are copyrighted by Brad Smith





Southeast Federation News

S.F.M.S. Newsletter

Subscription to Lodestar is FREE electronically

Email: sfms.lodestar@gmail.com Or

Editor: **Cindy Reed**

Can be read online:

<http://www.amfed.org/sfms/index.html>

www.amfed.org

SFMS 2024 Annual Convention

March 1-3, 2024

Live Oak, FL

William Holland School of Lapidary Arts
706-379-2126

Register Now at:

www.lapidaryschoolregistration.org

Federation Week Jun 2 - 8, 2024

Classes are subject to change

WILDACRES RETREAT 828-756-4573

Website @ www.wildscres.org

registrarwildacres@gmail.com Claudia Erwin

When scheduling keep in mind, workshops are subjected to change without notice.

Please check the website for changes.

Federation Weeks August 4th - 20th

2nd Week September 11th -17th



Nearby Gem Societies

Ms. Gulf Coast Gem & Mineral Society

www.mgcmgs.com

Meeting: 2nd Saturday of the month



Mobile Rock and Gem Society

www.mobilerockandgem.com

Meeting: 2nd Tuesday of the month



Gem & Mineral Society of Louisiana

Meeting: 2nd Monday of the month

Contact: Levette @ 504-214-3205

American Federation News



A.F.M.S. Newsletter

Subscriptions are \$5.00 per year

Checks should be made payable to "AFMS"

AFMS Central Office

Cheryl Nearly

42 Jefferson Avenue

Patchogue, NY 11772-1008

Centraloffice.amfed@gmail.com PH: 516-449-5341

AFMS 2024 Annual Convention

TBA

A.L.A.A.

Have you joined the **American Lands Access Association** (ALAA)? Help is needed. Please volunteer!

The organization was founded to promote and ensure the right of the amateur hobby collecting, recreational prospecting and mining, and the use of public and private lands for educational and recreational purposes and to carry the voice of all amateur collectors and hobbyists to our elected officials, government regulators and public land managers.

Individual dues are \$25 per year; clubs \$50 per year.

A quarterly newsletter is sent to all members.

For more information,

Visit <http://amlands.org>



Doug True, President

FIELD TRIPS

Dixie Mineral Council



For a monthly list of field trips, visit their website.

Members Only

<http://www.amfed.org/sfms/index.html>

Other Interests:

International Society of Glass Blowers

Visit site if you like Lampworking

Website: www.isgb.org

Shows and Events

2/3-4/2024 MERRITT ISLAND, FL: Central Brevard Rock & Gem Club, Veterans Memorial Park, 14333 Hicks Rd, Hudson, FL. The 48th Annual Rock, Fossil, Jewelry, Gem & Mineral Show. December 1-3, 2023; Saturday 9:30AM—5:30PM, Sunday 10AM—4PM. Admission \$6, under 12 Free if accompanied by adult. <http://www.centralbrevardgems.com>

2/24/2024—LAKELAND, FL: Annual show; Bone Valley GM&FS; First Presbyterian Church of Lakeland, 175 Lake Hollingsworth Dr, Lakeland, FL 33801 ; Sat. 9-4:30; \$3 Adults, Children under 18 and teachers Free; contact Jim Reed, (863) 255-0651; Email: BoneValley.info@gmail.com; Website: www.bonevalley.net/

3/1-3/2024—LARGO, FLORIDA: Annual show; Suncoast Gem & Mineral Society, Inc. of St Petersburg, FL; Largo Event Center, 6340 126th Ave N. Largo, FL 33773; 10-5 All 3 days; Adult \$6, Under 12 Free - Good for all three days; Free parking and food service on site ; contact sgamsdealerchair@gmail.com; Website: sgams.com

3/1-3/2024—LIVE OAK, FL: Annual Federation Rockhound Roundup; Southeast Federation of Mineralogical Societies ; Suwannee River Music Park, 3076 95th Drive; Fri. 10-5, Sat. 9-4, Sun. 9-4; Free; SFMS Member vendors from seven states: FL, GA, TN, MS, NC, SC, AL. Rough rock, slabs, jewelry, cabs, minerals, fossils and more; contact Jerri Heer, 9016 122nd Ave, Tampa, FL 33637, (419) 344-9999; Email: jheerx6@aol.com; Website: Southeastfed.org

FOR A COMPLETE LIST OF SHOWS VISIT - amfed.org

AKS GEM SHOW Presents New Orleans Bead & Jewelry Show

Pontchartrain Center, 4545 Williams Blvd., Kenner, La. 70065

Admission Fee \$5.00 Hours: Fri & Sat 10am-6pm / Sun 10am-4pm Phone: 504-265-8830

Email info@aksshow.com with inquiries

Visit website www.aksshow.com and GET A COUPON FOR \$1.00 OFF Admission

Jan. 5,6,&7 April 12,13, & 14 July 19, 20, & 21 Sept 6,7,& 8 November 1,2,& 3

**Save \$1.00 off
admission to any AKS
Gem Show**

Offer Expires: no expiration.

This coupon is good for entrance to any AKS Gem Show! ***Be sure to check your inbox for additional savings from our exhibitors.***

[Check our list of shows now...](#)



Harrison County Gem & Mineral Society Information



Officers 2024

President - *Allan Elliott* Allan.K.Elliott@gmail.com

Vice President - *Lisa Fitch* lapidaryarts@hotmail.com

Secretary - *Sheryl Rogers* sdr@frslaw.com

Treasurer - *Nicole Green* nfouasnon@gmail.com

Directors

Sharon Greer (3 yr.) 3catsgreer@bellsouth.net

Reba Shotts (2 yr.) Buddynrebashotts@bellsouth.net

Jina Martin (1 yr.) jinamartin@hotmail.com

Committee Members

Workshop & Facebook Chairman

Laura Tate wanderingmsrn@gmail.com

Equipment Chairmen

Cindy Braden 228-243-2665

Field Trip Chairman

Sharon Greer 3catsgreer@bellsouth.net

Librarian Chairman

Sue West msuewest@bellsouth.net

Newsletter Editor

Lisa Fitch lapidaryarts@hotmail.com

Sunshine & Hospitality Chairman

Sue West msuewest@bellsouth.net

Show Chairs

Allan Elliott Allan.K.Elliott@gmail.com

Nicole Green nfouasnon@gmail.com

Webmaster & Workshop Chairman

Leslie Jancovich ljancovich@gmail.com

Assistant Webmaster

Nicole Green nfouasnon@gmail.com

Southeast Federation of Mineralogical Societies

Ms. State Director, Parliamentarian & Boundaries

Leslie Lane 601-344-8171

Past President SFMS

John Wright osjbw@cableone.com

Meetings / Workshops

Herbert Wilson Recreational Center
3625 Hancock Avenue
Gulfport, Ms. 39501

3rd Saturday of each month

9 am - 12 pm Workshop

12 pm - 12:30pm Program

12 pm - 1 pm Lunch

1 pm - 2 pm Meeting

Directions: Coming from Pass Road or Hwy. 90 turn on Courthouse Road.

Turn next to Hancock Bank on 33rd Street until you reach Hancock Street. Look to your left and you will see the Herbert Wilson Recreational Center. We are on the left side of building thru the gates.

Come for fun . . . Stay to play!

Visit our Website and Facebook page:

www.gulfportgems.org or
<https://www.facebook.com/gulfportgems>

2024 MEETING DATES

Jan 20th	May SHOW 18th & 19th	
Feb 17th	June 15th	Sept 21st
Mar 16th	July 20th	Oct 19th
Apr 20th	Aug 17th	Nov 16th

Dec 21st Christmas Party

Newsletter Editor

Lisa Fitch

Submit newsletter articles to:

lapidaryarts@hotmail.com



Copyright 2023 Harrison County Gem & Mineral Society Newsletter known as Gulfport Gems. All rights reserved. Especially those items that are specifically copyrighted by their authors. Unless otherwise credited, articles are by the editor.

Articles and minutes are due by the last day of each month



Membership Form

Contact Our Treasurer: Nicole Green (228) 344-8066 **Email:** nfouasnon@gmail.com



HARRISON COUNTY GEM & MINERAL SOCIETY, INC. MEMBERSHIP APPLICATION			
APPLICANT INFORMATION			SINGLE \$20.00
Name:		Email:	
Date of birth (Mo/Day):	Anniversary: (Mo/Day)	Cell Phone:	
Current address:		Home Phone:	
City:	State / Zip Code:	Work Phone:	
CO-APPLICANT / SPOUSE INFORMATION			FAMILY \$30.00
TWO ADULTS & ALL MINORS UNDER 18 YEARS OF AGE/AT SAME ADDRESS			
Co-Applicant / Spouse:		Email:	
Date of birth (Mo/Day):	Cell Phone:	Work Phone:	
JUNIOR INFORMATION			JUNIOR \$10.00
UNDER 18 YEARS OF AGE ★ SPONSORED BY AN ADULT			
Name	Birthday (Mo/Day/Year)	Relationship:	
Name	Birthday (Mo/Day/Year)	Relationship:	
Name:	Birthday (Mo/Day/Year)	Relationship:	
Name	Birthday (Mo/Day/Year)	Relationship:	
★ EMERGENCY CONTACT INFORMATION ★			
Name:			
Relationship:	Home Phone:	Cell Phone:	
INTEREST INFORMATION			
Hobby Interest:		Jewelry Interest:	
(Each applicant initial interests)			
<input type="checkbox"/> Fossils <input type="checkbox"/> Minerals <input type="checkbox"/> Lapidary (<input type="checkbox"/> Cabbing, <input type="checkbox"/> Faceting, Etc.) <input type="checkbox"/> Field Trips (Creeks, Gravel pits, Mines, Etc.) <input type="checkbox"/> Special Interests _____		<input type="checkbox"/> Beading <input type="checkbox"/> Kumihimo <input type="checkbox"/> Pearl Knotting <input type="checkbox"/> Other _____	
		<input type="checkbox"/> Wire Wrapping <input type="checkbox"/> Chainmaille <input type="checkbox"/> Silversmithing	
APPLICATION FEES			
Applications can be mail to: Harrison County Gem & Mineral Society P. O. Box 10136, Gulfport, Ms. 39505			
Single \$20.00	Family \$30.00	Junior(s) \$10.00 Each	DUES: \$
Dues: <i>Circle One</i> NEW RENEWAL No Proration Deadline: 3rd Saturday of January			TOTAL: \$
SIGNATURES			
How did you hear about our society? _____			
I authorize HCGMS to use my picture or likeness for society promotions?			YES or NO
I authorize HCGMS to include my information in society listings for members only?			YES or NO
Signature of applicant:		Date:	
Signature of co-applicant/spouse (only if for a family membership):		Date:	
*Newsletter will be sent via email @ no charge		Modified 11/20/17 LF	

Our goal is to promote, educate and stimulate interest in the earth sciences and lapidary arts context.











Gulfport Gems, Editor
P O Box 10136
Gulfport, MS 39505

Address Service Requested



THE OFFICIAL PUBLICATION FOR THE HARRISON COUNTY GEM & MINERAL SOCIETY, INC.

HCGMS 2024 Workshops

<div>January 20</div> <div>Victorian Bracelet By Sue West</div> <div>Program - Cindy B. Equipment / Waiver</div> <div></div> <div>Happy New Years</div>	<div>February 17</div> <div>Viking Knit By Julie B.</div> <div>Program - Lisa F. Scholarships</div> <div>Happy Valentines February 14th </div>	<div>March 16</div> <div>Shamrock Bracelet By Lisa Fitch</div> <div>Program - Nicole G. Clasps</div> <div>St. Patrick's Day 17th </div> <div>Happy Easter March 31 </div>	<div>April 20</div> <div>Lotus Pendant Karen Williams/ Rozz</div> <div>Program - Use Extra time to Prepare Post Cards for Show.</div>
<div>May 18</div> <div>SHOW 18th & 19th</div>	<div>June 15</div> <div>Kumihimo By Nicole Green</div> <div>Program -</div>	<div>July 20</div> <div>Shaggy Earrings By Lynn & Laura Tate</div> <div>Program -</div> <div>Happy 4th </div>	<div>August 17</div> <div>Netted Christmas Ornament Part I By Lisa F.</div> <div>Program -</div>
<div>September 21</div> <div>Unfinished Projects</div> <div>Program -</div>	<div>October 19</div> <div></div> <div>Program -</div> <div></div> <div>Happy Halloween</div>	<div>November 16</div> <div>Program -</div> <div></div> <div>Happy Thanksgiving</div>	<div>December 21</div> <div></div> <div>CHRISTMAS PARTY</div>