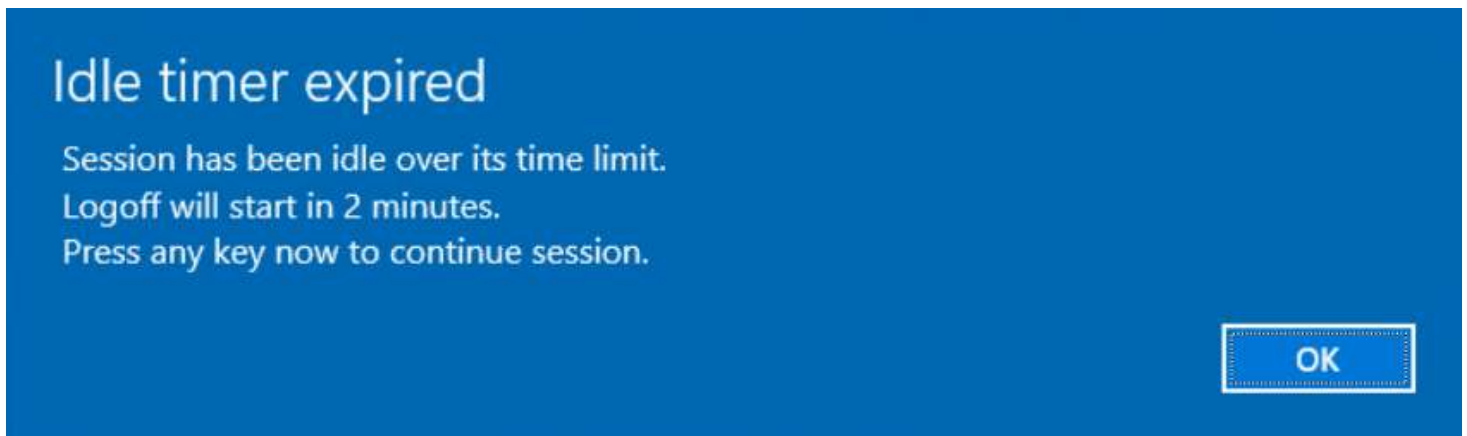




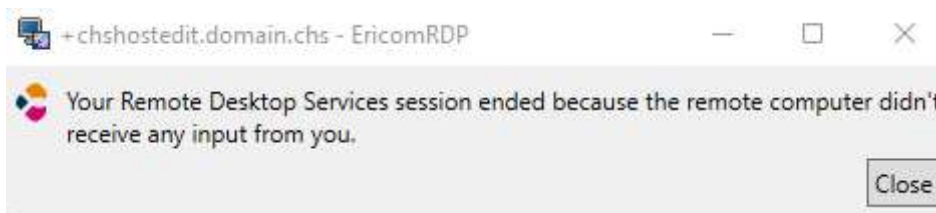
Idle Sessions Policy

In an effort to adhere more closely to NIST Standards, CHS Hosted has changed a security policy beginning 9/8/2023 that reduced the time out for idle sessions.

This means that if you leave your CHS Hosted Remote Desktop open and do not interact (mouse movement, clicks, keystrokes) for 30 minutes, for safety and security reasons your session will be considered idle and will be signed out. Two minutes prior to this your Hosted screen should display:



Any programs, files or records that were open are closed and any unsaved data is lost. After you have been signed out you should see:



We realize this may result in an inconvenience, but the safety and security of your patients and your organizations is one important reason we have taken this step. Our technical team has also conclusively linked software performance issues to unattended or abandoned sessions that in many cases are still running resource intensive processes.

*This does not apply to software within the Hosted Desktop - idle times for Lytec, UnifiMD and other programs are managed by your office manager or super-user.