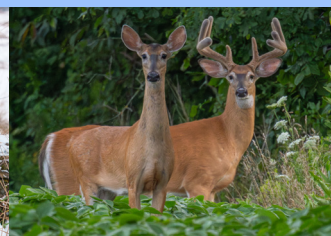




THE HULLETT PROVINCIAL WILDLIFE AREA

A Prime Multi-Use Multi-Season Facility

USER GUIDE 2025-2026



Clinton, Ontario • 519-482-7011 • www.hullettmarsh.com



9 GIANT CHAIRS 1 GREAT DAY TRIP

Start in **Clinton** and make it a day to remember!

**POST A CHAIR SELFIE
ONLINE & TAG US AT:**

@TourismCentralHuron
  **#GiantChairTour**



Scan the QR code for a
**map, itinerary, and
more tour info:**



Altogether different...and so very, very tasty!



519-262-3409



dan@pineridgebbq.com



pineridgebbq.com



Welcome to the Hullett Provincial Wildlife Area!

Get ready to explore the Hullett Provincial Wildlife Area (HPWA), a truly special place that's completely free to enjoy! This incredible spot spans 2,200 hectares (that's about 5,400 acres!): boasting 650 hectares (1,600 acres) of vibrant wetlands, 770 hectares (1,900 acres) of beautiful woodlots and hedgerows, 410 hectares (1,000 acres) of peaceful fallow fields, and 370 hectares (900 acres) of active agricultural land. There's something for everyone no matter the season here at Hullett Marsh!

You can lace up your boots for a hike on 12.5 km of trails, ranging from easy strolls to more challenging routes, or explore the 17 km of dykes. Nestled along the South Maitland River at the confluence of the Atlantic and Mississippi flyways, Hullett Marsh is a magnet for millions of birds each year! Whether you're into hunting, hiking, horseback riding, birdwatching, canoeing, or just enjoying nature, you'll find endless opportunities at Hullett Marsh!

This amazing man-made marsh came to life in the late 1970s and early 1980s, thanks to a partnership between Ducks Unlimited Canada and the Ontario Ministry of Natural Resources. Today, that partnership continues to thrive, with daily management of the property taken on by the Friends of Hullett (FoH).

Who are the Friends of Hullett?

We are the Friends of Hullett, a non-profit organization dedicated to taking care of Hullett Marsh. Back in the 1990s, the Ministry of Natural Resources had to step back from their involvement with the HPWA. That's when we came in! We were formed to help manage this incredible marsh, officially registering as a charity in 1998.

Our main goal is to manage the HPWA and work tirelessly to improve its natural beauty and conserve it for generations to come. As 70% of the original wetlands have been lost in southern Ontario – the protection of Hullett Marsh has never been more important. Here's what we're committed to doing:

- **Maintaining the delicate balance** within all the diverse ecosystems here, including our

wetlands, agricultural areas, and wildlife habitats.

- **Promoting environmental education** for both youths and adults, encouraging everyone to become wise stewards of our natural resources.
- **Helping all recreational users** understand that multi-use activities benefit everyone and working together towards common goals.
- **Developing a strong financial management** system to ensure this property thrives for the long haul.
- **Encouraging vibrant community involvement**, including our neighbours, local municipalities, and regional tourism partners.

To make all of this happen, we take on many exciting projects around the property. This includes:

- **Removing and monitoring invasive species** like Autumn Olive, Purple Loosestrife, Garlic Mustard, and Phragmites to protect our native plants.
- **Limiting woody vegetation** in our precious grasslands.
- **Planting trees** to expand our interior forest habitats.
- **Maintaining and monitoring** all sorts of nesting boxes for Wood Ducks, bluebirds, Mallards, and screech-owls.
- **Helping visitors** enjoy their time on the property.
- **Hosting numerous public events** throughout the year, so everyone can experience the magic of Hullett Marsh!

The Friends of Hullett are dedicated to ensuring the Hullett Provincial Wildlife Area thrives for generations to come. In a region where a significant portion of original wetlands have vanished, our work to maintain this critical habitat is vital. But we can't do it alone.

Every visitor who enjoys this special place plays a part in its preservation. If you enjoy Hullett Marsh and are interested in supporting the maintenance of the property, we ask that you consider joining the Friends of Hullett by becoming a member for only \$35 (or more) a year! Join us in cherishing and protecting the magic of Hullett Marsh, ensuring it remains a vibrant natural treasure for everyone, forever.

Table of Contents

Welcome to the HPWA.....	3
FoH Memberships & Volunteer Opportunities..	4
Ducks Unlimited Canada	5
A Word from our Conservation Officers.....	6
General Regulations & Prohibited Actions	7
Hunting Rules & Regulations.....	8
Waterfowl Opening Day & Stake Locations	9
Tree Stands & Hunting Blinds,	
Research at HPWA.....	10
TD FEF Funding, OFAH Funding	11
Trails at HPWA, Interactive Google Map.....	12
Photo Contest, Geocaching & Birding	13
Hullett Map	14-15
Thank You Note & Ad Directory	17
Local Business Advertisements.....	18-28

Board Members

Chair: Duane Inkpen
Vice Chair: Mat Shetler
Treasurer: Ryan Bayne
Secretary: Mario Coniglio
Directors: Steve Dalrymple, Mark Penhale, Barbara Orchard, Craig McDonald, Donna Taylor

Staff

Marsh Manager: Justin Johnson
Administrative Manager: Scott Austin
Wildlife & GIS Technician: Ben Elliott
Outreach Coordinator: Emily Dearing
Maintenance Supervisor: Daniel Dunbar
Maintenance Worker: Ethan Willert
Maintenance Worker: Rogan Catalan

COVER PHOTO CREDITS

American Wigeon: Doug Gordon; **Northern Lights:** Conrad Kuiper; **Green Heron:** Doug & Suzan Johnson;
Dog & Pheasants: Mario Coniglio; **Pair of Deer:** Darryl Boyer; **Trumpeter Swan Family:** Melody van Dorp

STAFF PHOTO (BELOW)

From Left: Justin Johnson, Ethan Willert, Scott Austin, Rogan Catalan, Daniel Dunbar, Ben Elliott, Emily Dearing





Become a Friends of Hullett Member!

For a \$35 (or more) donation you can become a FoH member! This membership includes marsh update emails and newsletters, a FoH logo vehicle decal, voting rights at our Annual General Meeting, periodic access to the Columbia store (in-person) in London, and a tax receipt. Visit hullettmarsh.com/contact_us to fill out a digital membership form and donate via PayPal, or fill out the form below and mail it to us with a cheque or cash! Physical forms can be sent to Friends of Hullett PO Box 1520 Clinton, ON N0M 1L0 or dropped off at our office location: 41378 Hydro Line Road, Clinton, ON.

The marsh is and will always be free to use. Friends of Hullett and the Hullett Marsh are supported largely by private contributions and donations; if you use Hullett regularly, enjoy the outdoors, or are looking for ways to

give back – consider becoming a member or donating. Help us to continue the environmental legacy of Hullett and ensure the marsh remains a space for all; now and into the future. Thank you.

Scan this QR code to fill out a membership form and make a donation!



Help maintain the marsh! Become a member for as little as \$35 per year!

There are three ways to become a member:

1. Cut out and mail the right side of this page to:
Friends of Hullett
PO Box 1520, Clinton, ON, N0M 1L0
2. Email us at fohoffice@hullettmarsh.com
3. Visit our website at hullettmarsh.com

Memberships include emailed newsletters, a vehicle decal, voting rights at the AGM, and a tax receipt.

Payment options include e-transfer, cheque, and PayPal

MEMBERSHIP REGISTRATION FORM

Name: _____

Address: _____

Email: _____

Phone: _____

Are you a hunter? ☐ No ☐ Yes, of: _____

Are you interested in volunteering? ☐ Yes ☐ No

Favourite activity at Hullett: _____

Comments: _____

VOLUNTEERS NEEDED



We are always looking for passionate volunteers to help with various tasks around the marsh! You can help out with trail maintenance, nesting programs, painting, pruning, and so much more!

To learn more, email us at
fohoffice@hullettmarsh.com





Hullett Marsh, viewed from above in 2024.

Hullett Marsh: A visionary wildlife habitat stands strong

Before you step into Hullett Marsh, it helps to start with a bird's-eye view. For 45 years, Ducks Unlimited Canada's (DUC) conservation specialists have studied this expansive 5,420-acre natural area from above, first by bush plane and now using modern aerial photography, to better understand and restore its wetlands. From that vantage point, the vast network of wetlands, winding trails and waterways comes into view, revealing the essential habitat this landscape provides for hundreds of wildlife and plant species.

Of course, you don't need to take to the skies to experience the magic of Hullett Marsh. It began with a vision rooted in the land — and it's here, among the thriving wetlands, that visitors can encounter it firsthand.

Restoring land, together

In the 1970s, the Province of Ontario purchased the land where Hullett Provincial Wildlife Area is situated from local landowners, with a vision to turn it into the wildlife management area it is today. A lasting partnership soon formed between the Province and DUC and in 1983, that vision came to life with the creation of eight large-scale wetland projects on what was once agricultural land.

In 1998, in response to provincial cutbacks, the not-for-profit Friends of Hullett (FOH) was established. The FOH oversee the area's day-to-day operations and partner closely with both DUC and the Province to ensure this important Provincial Wildlife Area remains on the landscape.

Maintaining a thriving ecosystem

Large wetland projects like Hullett Marsh require engineered infrastructure to maintain water levels that support healthy wetland plants to feed wildlife and create habitat they need for survival. Since 2010, DUC has invested over \$1 million to rebuild and upgrade the infrastructure that sustains Hullett Marsh's diverse wetlands. This work has included repairing damage caused by burrowing animals and beaver activity, repairing and reinforcing earthen dykes, and upgrading water control systems to improve habitat management. These ongoing efforts are crucial to ensuring that Hullett Marsh remains both a resilient ecosystem, and a place where people can experience nature through hiking, hunting and paddling.

Why it matters

DUC is proud to deliver wetland conservation that benefits both nature and people. Across Ontario, we've completed more than 5,000 habitat projects and conserved more than one million acres of vital habitat.

As wetland loss continues to threaten biodiversity and essential ecosystem services in southern Ontario — like flood protection, carbon storage and clean water — Hullett Marsh stands as a living example of what's possible through vision, partnership and dedication.

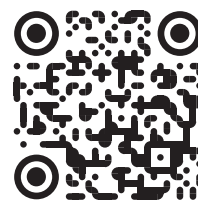
Whether you're exploring the trails, watching wildlife or simply appreciating the value of wetlands, you're part of a growing conservation legacy — one that ensures places like Hullett Marsh continue to thrive.



Hullett Marsh in 2004, viewed from a bush plane.



What's good for ducks is also good for hundreds of Ontario's wildlife species—including the snapping turtle!



Scan the QR code to learn more about Ducks Unlimited Canada, and how you can help keep wetlands in your community healthy.



A Word from our Conservation Officers

Conservation Officers regularly patrol the Hullett Provincial Wildlife Area (HPWA). Officers Drew Pegrum and Richard de Paulsen are responsible for Huron and Perth Counties which includes HPWA. Conservation Officers are part of the Ministry of Natural Resources in the Enforcement Branch. If you have an enforcement related question or see a natural resource violation you may contact the Conservation Officers directly using the cell phone numbers provided below. Conservation Officers are dedicated to protecting our natural resources and ensuring the safety of all HPWA users.

The HPWA is extremely unique and with that comes a unique set of rules that must be adhered to while hunting or recreating within the boundaries. It is very important that all users read and understand the HPWA User Guide. Anyone planning on hunting should also review the general hunting regulations at <http://www.ontario.ca/document/ontario-hunting-regulations-summary>

Conservation Officers would like to remind everyone that all roads within the HPWA are considered to be maintained. It is unlawful

to have a loaded firearm on the road or within eight meters of the road. It is important to understand that HPWA is a multi-use area. A wide variety of outdoor activities take place here and may overlap. Please respect all HPWA user groups. We appreciate that the majority of users adhere to the rules. Should you observe an activity or event that may be unlawful, please reach out by calling the Conservation Officers directly or using the Tips Line at **1-877-TIPS-MNR (1-877-847-7667)**. If you wish to remain anonymous, you may call Crime Stoppers at **1-800-265-8477**.



Ministry of Natural Resources

Drew Pegrum
Conservation Officer
Cell: 519-766-8158

Richard de Paulsen
Conservation Officer
Cell: 226-979-6907

Ben Summer
Sergeant
Enforcement Operations Specialist
Cell: 519-378-6308

PLEASE REPORT NATURAL RESOURCE VIOLATIONS BY CALLING 1-877-847-7667

You can assist a Conservation Officer by calling our natural resources call line with the following information:

- Nature of the violation (hunting, fishing, species at risk, unlawful harvesting, etc...)
- Vehicle information such as; licence plate, color, make & model of vehicle
- Location of the offence such as civic address or simply where you are in the Hullett
- Specifics about the event that you saw including date, time, persons involved if name known if not descriptions of people

1-877-TIPS-MNR



華宮酒家
CHINA PALACE RESTAURANT
Specializing in quality take-out

MON CLOSED
TUES - SUN 10 am - 8 pm

80206 Base Line Rd, Clinton
519-482-3323

BAYFIELD
BERRY FARM
WINE, CIDER & SPIRITS

77697 Orchard Line
Bayfield, ON N0M 1G0

Like us on Facebook & Instagram for hours & crop updates
Discover the Bounty of Huron County

Come visit our Farm Market & Winery/Cidery & Distillery for a cold beverage on the patio.

Also available: Fruits & Berries in Season, Baking, Preserves, Fruit Juices, etc.

519-482-1666
Email: berrymfarm@tcc.on.ca

General Regulations

MOTORIZED VEHICLES

Motorized vehicles (passenger vehicles, ATV's, UTV's, snowmobiles, etc.) are permitted on maintained roads and parking lots **only**. Unauthorized use of motorized vehicles is **not permitted** within the HPWA. Motorized vehicles are extremely damaging to the trails, vegetation, and the natural ecosystem of the property. Standard bicycles and E-bikes are permitted throughout the HPWA (see Ontario Reg. 369/09 for definition of E-bikes).

PARKING

Daily parking is permitted between the hours of 5:00 AM and 9:00 PM. Overnight parking is only permitted at 40874 Summerhill Road and camper trailers are not permitted. Please see page 8 for additional parking regulations related to hunting. **Do not park on roadways or in front of gates, cables, boat launches, bridges, and agricultural access points.** From Sept. 1 to the end of all migratory bird seasons, numbered parking spots in **Zone A** are reserved for hunters of migratory birds. Non-hunters, please park in front of unnumbered yellow parking barriers.

DOG TRAINING

Retriever training activities on water are **not permitted** in **Zone A** between May 15 and July 31 or in **Zone B** between May 15 and July 15. Dogs are to be leashed or under immediate control of the handler. If you use live birds for training, **you must obtain the appropriate permits** from the OMNR Vineland Area Office. You may need one or both of the following permits:

1. Authorization to Conduct Field Trials and Training during closed season;
2. Authorization to Release Wildlife Imported into Ontario Propagated from Stock Imported into Ontario. Contact information for the OMNR office:

519-773-9241 – Aylmer Work Center
519-826-4955 – Guelph Work Center
905-562-4147 – Vineland Work Center
MNRF.AYL@ontario.ca

HORSE ACCESS

Horse access is **not permitted** in **Zone A** from October 1 to April 30. Winter access for horses is available in **Zone B**.

SNOWMOBILES

Snowmobiles are permitted **only** on marked OFSC snowmobile trails and when OFSC trails through the HPWA are open. Please visit www.ofsc.on.ca for locations of trails and trail status.

WATER ACCESS

Pond access is **not permitted** in **Zone A** between May 15 and July 31, and in **Zone B** between May 15 and July 15. This includes retriever training activities, kayaking, canoeing and wading. This is to minimize disturbances to nesting waterfowl and support successful breeding.

RESTRICTED AREAS

Areas found at **Satellite Pond 14**, **Pintail Pool**, and the **White Tail Swamp** are off limits to **all users** 365 days per year.

FORAGING

Foraging is permitted for personal consumption only. Please be mindful and respectful of the resources and only take what you need.

SHED HUNTING

Shed hunting is **not permitted** between January 1 and March 20. This rule is enforced to reduce stress on wintering deer and promote winter survival.

BOOKING FOR GROUP ACTIVITIES

Booking for any groups of 20 or more people (**dog trials, training, bird watching, horseback riding, etc.**) may be scheduled by contacting the Hullett Office at fohoffice@hullettmarsh.com. Any large groups found on the property that have not scheduled an event will be asked to leave.

FISHING

Fishing is allowed at Hullett Marsh as per Ontario Fisheries Management Zone 16 Regulation. Fisheries Management Zone 16 is part of the Southern Bait Management Zone (BMZ). **Live or dead baitfish or leeches may not be transported into or out of the BMZ. DO NOT release baitfish, invertebrates (e.g. crustaceans), or unwanted pets into Hullett Marsh as their presence can be detrimental to the marsh.**

TARGET SHOOTING

Targets used must be paper, cardboard, wood, or clay. Please ensure that all shooting refuse is picked up and properly disposed of. Target shooting is **not permitted** in **Zone A**.

Prohibited Actions & Uses



ALCOHOL

Alcohol is **prohibited** on public lands under Ontario Liquor Licence Act.



CAMPING

Camping is **prohibited** anywhere in the HPWA. **Campfires are also not permitted anywhere in the HPWA.**



COMMERCIAL OPERATIONS

Commercial operations are **prohibited** on the property.



LITTERING

You are responsible for the removal of your own garbage from the property. Please note that there are no recycling bins or garbage cans within the HPWA.



MOTORIZED WATERCRAFT

All motorized watercraft are **prohibited**, including those with electric motors.



"Yellow Dot" signs are found at each of Hullett Marsh's twenty parking lots, indicating that some activities are prohibited within the marsh. By passing beyond these signs and accessing Hullett, you are agreeing to abide by all rules and regulations of the HPWA. These signs have been installed in accordance with the Trespass to Property Act. Thank you for obeying the rules and helping to keep Hullett a safe and enjoyable space for all users.

Hunting Rules & Regulations

****The boundary between Zone A and Zone B is the South Maitland River**

Zone A Migratory Bird Hunting Regulations:

Zone A consists of 1020 ha (2520 acres) of land of which 680 ha (1680 acres) are flooded with shallow open water. The average depth within the five water pools is approximately 50 cm (20 in).

Within **Zone A**, there are 52 hunting stations (stakes) available.

The Following Regulations Apply in Zone A:

1. To lawfully hunt migratory birds during their open season, you must park one vehicle in a numbered parking space in a designated parking lot. The number of your space permits you to hunt at the stake with the same number. Stake locations are shown on the accompanying map. Please refer to page 9 for Waterfowl Hunting Draw Procedure and Stake Selection in **Zone A** to learn how to get to your stake for waterfowl hunting.
2. Hunters must keep their firearms unloaded and encased except while occupying the blind or stake.
3. Only **two people** are permitted at any stake including non-hunters.
4. The two people must hunt within 30 metres of the blind or stake that is marked with the same number as the vehicle's parking space.
5. Portable blinds may be used. No person shall cut any vegetation nor erect and leave a blind of any fashion.
6. Stake numbers F1 and F2 are field hunting stakes. These stakes will be open for hunting once crops are harvested. Please visit the homepage of our website for updates.
7. There are two accessible blinds available for your convenience. Please refer to the accompanying map for locations. The use of these blinds are to be reserved by emailing the FoH Office at fohoffice@hullettmarsh.com prior to your hunt.

Zone A Small Game Hunting Regulations:

It is lawful to hunt small game (including turkeys) in **Zone A** only if the following conditions are adhered to:

1. The season for migratory birds must be closed. This includes Mourning Doves.
2. All hunters must park in one of the designated parking lots (identified on the accompanying map) and position their vehicle in front of a parking barrier. Requirements specific to the numbered spaces only apply to hunting during Migratory Bird Hunting season. Parking in any of these parking spaces permits all hunters in the vehicle to hunt small game, outside of Migratory Bird Hunting season, anywhere in **Zone A**.

BIG GAME HUNTING IS NOT PERMITTED IN ZONE A.

Zone B Hunting Regulations

Zone B consists of 1060 ha (2620 acres). This zone consists of agriculture fields, meadows, forests, tall grass prairies, marginal woodland, swamps, and ponds.

The Following Regulations Apply in Zone B:

1. All game for which there is an open season, and during that open season, may be hunted.
2. All hunters must park in one of the designated parking lots (identified on the accompanying map) and position their vehicle in front of a parking barrier. This parking space permits all hunters in the vehicle to hunt anywhere in **Zone B**.

Pheasant Hunting

For the 2025 pheasant season, FoH has purchased 1000 ring-necked pheasants from **Royal Game Birds** and **Creeside Pheasantry** for the purpose of hunting in **Zone B** only. Pheasants are released at intervals during the open season and are not scheduled to specific days. The birds released are provided without charge to the public but it is highly recommended that hunters support the Friends of Hullett **Pheasant Challenge**. With the purchase of a ticket you are entered into a draw to win a **portable generator** or **shotgun**!

The future of the pheasant hunt is in the hands of the hunters based on their financial support. The 1000 birds for 2025 were the result of 2024 fundraising. Past releases were 1000 birds in 2024, 1200 birds in 2023 and 1200 birds in 2022.

The **Pheasant Challenge** is sponsored by **Sommers Generator Systems & Clinton Sporting Goods** with our sincere thanks. Tickets are available until December 31st at **Clinton Sporting Goods** (519-606-3006) or at www.hullettmarsh.com via PayPal.

General Hunting Rules

Firearms:

All roadways within Hullett are considered maintained. It is illegal to have a loaded firearm within eight (8) meters of a maintained road. **Hunters are not exempt from any federal or provincial laws regarding firearms while hunting in Hullett.**

Hunting:

Hunting is not permitted near maintenance buildings, or on neighbouring private land, without the permission of the landowner.

A retriever, waders or canoe is recommended to ensure retrieval of all migratory birds shot. Hunters are required by the Migratory Birds Convention Act to retrieve downed game.

Hunting is prohibited within 400 metres of waterfowl baiting locations. Bait sites are marked on the user guide map and are signed on the property.

From June 1 to August 31, hunting is prohibited on or near the nature trails. **The Hullett Provincial Wildlife Area does not have a late goose season as it does have Sunday gun hunting.**

Consult the Hunting Regulations Summary for a more detailed listing of Ontario's Hunting regulations or view the summary online at:

www.mnr.gov.on.ca/en/Business/FW/Publication/MNR_E001275P/html

Scan this QR code to purchase your Pheasant Challenge tickets today!



Waterfowl Hunting Draw Procedure & Stake Selection

Waterfowl Opening Day for Ducks:

Before opening day, hunters are required to participate in a draw conducted by the FoH and the OMNR (does not apply to early goose season). The purpose of this draw is to ensure an equitable allocation of hunting opportunities and encourage safe hunting for everyone. The draw takes place the Friday before opening day at noon.

To participate in the draw, waterfowl hunters must park in front of a numbered barrier in parking lot 40874 Summerhill Road and be present with the vehicle until the time of registration. Registration time begins at 10:00 AM on the Friday morning and the draw is held at 12:00 PM (noon). **The draw determines the order of choice for hunting stakes, not the stake itself.** The first 52 motor vehicles will qualify for the draw (unoccupied vehicles are not eligible). If all 52 stakes are not taken in the draw, the remaining stakes will be allocated on a first come, first serve basis. **Two people may occupy a hunting stake but only one draw per vehicle will be permitted.**

Upon registration, hunters will receive a Hunter Validation/Harvest Card (HV/HC), at which time **hunters will fill out an identification card** that will be placed with their stake number. This identification card helps keep track of who is occupying which stake. **The HV/HC MUST be displayed in a manner so that it can be easily seen**, preferably on the dashboard of the vehicle.

After the hunt, **hunters are required to return to parking lot 40874 Summerhill Road** for FoH staff to record their harvest for our records. Information collected on birds checked is used for monitoring populations, assessing harvest trends, and managing waterfowl in Ontario.

Hunting in Zone A After the Opening Day:

To provide a fair and equal opportunity to all hunters after opening weekend of waterfowl season, hunters that arrive before 5:00 AM must:

1. Line up in the overflow parking lot (40874 Summerhill Road) on a first come, first serve basis at one of the numbered parking barriers that corresponds to one of 52 hunting stakes.
2. After 5:00 AM, hunters must proceed to the parking lot corresponding with the stake number they have selected to hunt from.

Accessible Blinds:

There are two accessible blinds for your convenience at the Hullett Marsh. Please refer to the accompanying map for locations. Use of these facilities are to be reserved by emailing the FoH Office at fohoffice@hullettmarsh.com during normal business hours prior to your hunt.

Additional Comments:

Stakes numbered 1 – 50 are permanent locations. **Stakes F1 and F2 are field hunting stakes and are placed after crop harvest.**

Trail and channel markers are placed to help you find some stakes. The markers and stake numbers will show up in the beam of a flashlight. **We urge all hunters to scout the area ahead of time** and take a compass or GPS unit with you. Many stakes will be almost impossible to find in the dark unless you know the area well. Please refer to GPS data for stakes.

Wading in unfamiliar waters can be extremely dangerous. Chest waders will be required in most cases. Keep in mind that open water can mean deep water, especially near dykes. Due to management practices, water levels may fluctuate and shorelines may change.

Sky-busting shows poor sportsmanship and results in crippled birds. This is strongly discouraged at Hullett. Know your shotgun and its limitations. Some stakes may be closed at the OMNR's discretion during certain periods to restrict hunting activity near waterfowl banding sites and special events such as youth hunts. If done, notices will be posted at the parking space for that stake.

Access to Hunting Stakes:

Walk-in (chest waders highly recommended): 1-9, 11, 22, 27, 32, 33, 42, 46, 48-50. The water level within the ponds are actively managed by Ducks Unlimited Canada and the FoH. Access will change from year to year and season to season.

Hunting Stake Locations:

Coordinates provided in Decimal Degrees

Mallard Pool

Parking at 40905 Summerhill Road

Stake #	Latitude	Longitude
1	43.63724194	-81.4568975
2	43.64062806	-81.45459306
3	43.64155	-81.4506
4	43.63944	-81.4486
5	43.63685	-81.4491

Bluebill Pool

Parking at 40905 Summerhill Road

Stake #	Latitude	Longitude
6	43.64113806	-81.46692222
7	43.64087361	-81.4633
8	43.63735917	-81.46179778
9	43.63413889	-81.46321111
10	43.63296528	-81.46620194
11	43.631425	-81.46957556
12	43.63541472	-81.46613417
13	43.63740167	-81.46466194
14	43.64122861	-81.47118806
15	43.63790389	-81.46951333
16	43.63540639	-81.47034917
17	43.63361944	-81.47357083
18	43.63859361	-81.47326944
19	43.64378667	-81.47148528
20	43.645965	-81.47112583

Butterball Pool

Parking at 81001 Burns Line

Stake #	Latitude	Longitude
21	43.62891861	-81.47155056
22	43.62809	-81.46723028
23	43.62476472	-81.46568
24	43.62411222	-81.46224167
25	43.62061028	-81.45988472
26	43.61873194	-81.45900278
27	43.6221025	-81.45601667
28	43.62332278	-81.4593475
29	43.62532667	-81.45583028
30	43.62821639	-81.46270694
31	43.62653556	-81.45973167
32	43.62851278	-81.45840778
33	43.62772139	-81.45362944

Whistler Pool

Parking at 81001 Burns Line

Stake #	Latitude	Longitude
34	43.62411417	-81.44589278
35	43.62568694	-81.44895361
36	43.62341639	-81.44933333
37	43.62126472	-81.44465722
38	43.61994472	-81.45064611
39	43.61744167	-81.45292028
40	43.61519278	-81.45691861
41	43.614695	-81.45303583
42	43.61771361	-81.44790278
43	43.61489417	-81.44819167
44	43.61233472	-81.44878

Bluewing Pool

Park in 41494 Bridge Road

Stake #	Latitude	Longitude
45	43.61051194	-81.44644694
46	43.61300222	-81.44382806
47	43.61558167	-81.44502417
48	43.61593111	-81.440875
49	43.61784389	-81.44452028
50	43.618569	-81.440698

Field Stakes

Parking at 41494 Bridge Road for F1

Parking at 81001 Burns Line for F2

Stake #	Latitude	Longitude
F1	43.62070639	-81.43735278
F2	43.63427389	-81.44142167

Tree Stands & Ground Blinds

Hunting structures may be placed, erected, and used on HPWA land **only** if they are being used for the sole purpose of hunting. You may not use any structures for overnight accommodations and must still follow the 5AM entry rule. Homemade or constructed structures are **not permitted**, you must use a manufactured structure as they are safety tested and approved. Hunting structures may be placed beginning on September 1st and **must** be removed by January 31st of each year. Any structure which is not removed in accordance with this rule, may be removed by Friends of Hullett staff. Please keep in mind that other hunters may use your hunting structure at any time as the HPWA is public land. See figures to the right for examples of approved and non-approved hunting structures.



Non-Approved



Approved



Non-Approved



Approved

Scientific Research

Researchers interested in collecting data within the HPWA are advised to contact the Hullett Office before beginning work. Researchers must follow all rules of the HPWA unless otherwise permitted by Friends of Hullett.

Interested in Joining The Hullett Board of Directors?

To run for the Board of Directors (BOD), **you must be a valid member of the FoH** and are required to submit an application expressing your interest to run for the BOD. Please contact fohoffice@hullettmarsh.com for application information. **Applications are due April 30, 2026** and BOD positions are up for renewal/election on **Sunday, May 24, 2026**.



Hosted by the Huron-Perth
Youth Pheasant Hunt Committee

WHEN:

Saturday November 15, 2025

WHERE:

Hullett Marsh

WHO:

Open to apprentice hunters
12 to 15 years of age.

MORE INFO AT WWW.LOOP-PERTHHURON.CA

OFAH and TD Friends of the Environment Foundation Funding

Friends of Hullett has secured significant funding to advance several crucial conservation initiatives at Hullett Marsh. The Ontario Federation of Anglers and Hunters (OFAH) has generously provided two grants: \$6,000 from their Community Conservation Fund will equip the invasive species control program with essential tools, crucial for the careful chemical control of prevalent invasive species such as Phragmites, Garlic Mustard, and Buckthorn. Additionally, \$5,000 from OFAH's Community Projects Fund will facilitate the rebuilding of an accessible hunting blind, enhancing opportunities for outdoor enthusiasts. Further bolstering conservation efforts, the TD Friends of the Environment Foundation has awarded a \$5,000 grant specifically for turtle protection. These funds will be used to construct new nest protectors, launch a photomonitoring program, and improve informational signage for visitors.



OFAH

FOH Pheasant Challenge



Support our Annual Pheasant Challenge!

Hunters, we need your financial support to continue the release of pheasants at Hullett Marsh. Purchase your \$10 tickets today! Each ticket purchased gives you a chance to win one of two great prizes!

First Place

Stevens 555 O/U 3" 20 ga. Shotgun



You do not need to be a hunter to purchase raffle tickets. The winner of the gun must show a valid PAL. For more information, scan the QR Code.



Scan this QR Code!

Raffle Prizes



SOMMERS
Generator Systems



Second Place

3000W Inverter Generator

Trails at Hullett Marsh

Red Trail

Length: 1.1km
Difficulty: Medium
Time: 20-30 min
Slope: 0-3%
Min. EL: 298m
Max. EL: 303m

This trail is for hikers looking for a rugged experience. There is lots of poison ivy. The Red Trail goes through mature forests and fallow fields. FoH staff will be working to improve this trail in the future.

Orange Trail

Length: 1.2km
Difficulty: Medium
Time: 20-30 min
Slope: 0-8%
Min. EL: 303m
Max. EL: 315m

This trail has access to the dyke systems and will lead you to the highest point in the HPWA for great views. This trail is recommended if you are new to Hullett Marsh and forms a loop back to the parking lot.

Yellow Trail

Length: 0.4km
Difficulty: Easy
Time: 10-15 min
Slope: 0-4.5%
Min. EL: 299m
Max. EL: 304m

This trail connects to the Blue Trail and offers a great short loop if you don't want to hike the entire Blue Trail. The forest floor flourishes here, after several Ash trees were lost.

Green Trail

Length: 2.4km
Difficulty: Medium
Time: 30-50 min
Slope: 0-8%
Min. EL: 299m
Max. EL: 313m

Woodlands and meadows offer a nice balance between sunshine and shade while raptor nests and duck boxes offer great sights to see. This trail intersects Blue, Purple, and White Trails.

Blue Trail

Length: 2.3km
Difficulty: Medium
Time: 30-50 min
Slope: 0-8%
Min. EL: 298m
Max. EL: 309m

This trail stretches from Wildlife Line to Front Road and is full of wildlife and wildflowers in both woodland and meadow habitats. It intersects Yellow, White, Purple, and Green Trails.

Purple Trail

Length: 0.3km
Difficulty: Easy
Time: 5-10 min
Slope: 0-3%
Min. EL: 304m
Max. EL: 307m

This trail is accessible through either the Blue or Green Trail. Along it you will find a variety of ecosystems and a large number of Beech trees, whose smooth trunks resemble elephant legs.

White Trail

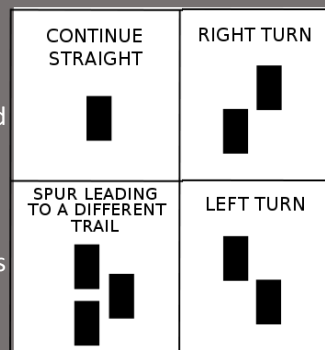
Length: 4.7km
Difficulty: Medium
Time: 60-90 min
Slope: 0-9%
Min. EL: 300m
Max. EL: 313m

This is the longest trail in the HPWA, spanning from one side to the other. It allows you to experience a wide variety of habitats and wildlife, showing the importance of biodiversity.

Dyke System

Our 17km of dykes offer relatively flat, even hikes and can be found all over the marsh. There's minimal tree coverage but great views of open water, wildflowers, and wildlife.

Each of Hullett's seven trails has been marked using the standardized blazing method used across North America. The colour of the paint on the blaze corresponds to the colour of the trail on the map.



INTERACTIVE GOOGLE MAP

Custom map of all trails, hunting stakes, boat launches, & parking lots!

Features

You can turn on and off different layers of the map depending on what you are looking for!

Where to Find it

Visit the homepage of our website and click on the map icon.

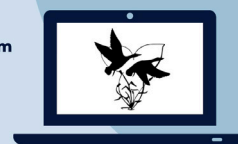


hullettmarsh.com

Questions? Visit our Website!

hullettmarsh.com

- Rules & Regulations
- Hiking & Hunting Tips
- Digital User Guide
- Pheasant Challenge Tickets
- Membership Registration Form
- Information on Activities
- History of the HPWA
- Contact Information



You can also follow us on Instagram @hullett_marsh or Facebook @HullettMarsh



2026 PHOTO CONTEST

Show us your pictures of Hullett Marsh! From scenery and wildlife, to hunting, horseback riding, and family fun, FoH wants to see it all! Email your submissions to fohoffice@hullettmarsh.com

Images MUST:

- Be taken at the HPWA
- Depict safe, rule abiding practices
- Not contain any gore
- Include photographer's name in the file name (eg. John_Smith.jpg)

1st Place Prize:

Free Hullett Membership and Photo featured on the cover of the **2026/2027** User Guide

2nd - 6th Place Prize:

Photo showcased on the cover of the **2026/2027** User Guide

By entering your photos, you give Friends of Hullett the rights to use them in media posts, presentations, newsletters, and public displays with photo credit.

Birding at Hullett Marsh

Over 200 species of birds have been spotted at the Hullett Provincial Wildlife Area. Which will you find?



Scan this QR code!



Visit our website at hullettmarsh.com and click on the Activities tab for a PDF download of our Birding Checklist!

Hullett Marsh Geocaching

8 registered geocaches hidden within the marsh!



Scan this QR code!



Visit our website at hullettmarsh.com and click on the Activities tab for a PDF download of clues and coordinates.



Farmer's Dell
Est. 1956

Burgers, Fries,
Milkshakes, Ice Cream
& more

OWNED AND OPERATED BY
JEFF & CRYSTAL OESCH

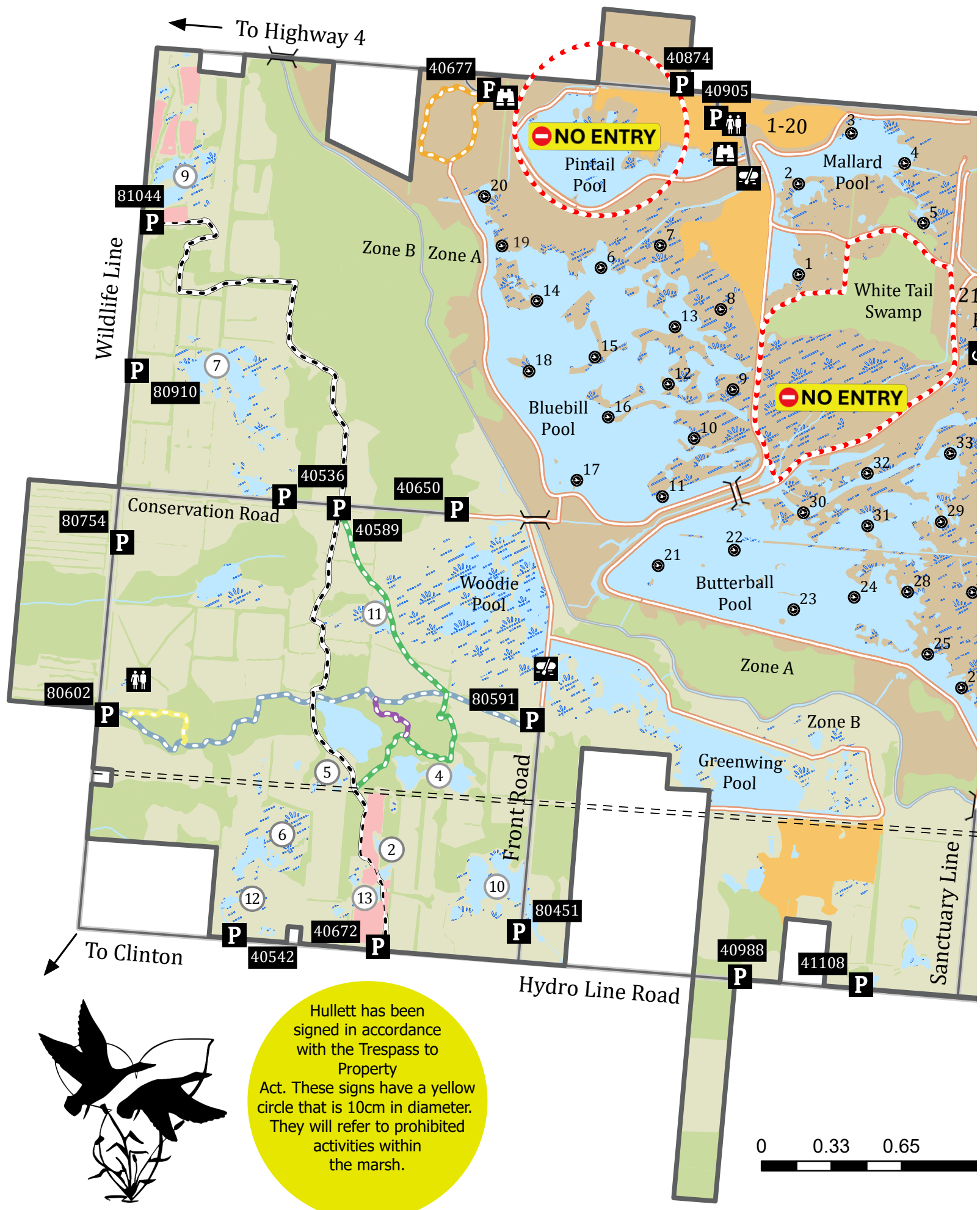
- 519-233-7162
- farmersdell2018@gmail.com
- <https://m.facebook.com/farmersdell2018/>
- 6 London Rd. Brucefield, ON

JORGE PAREJO

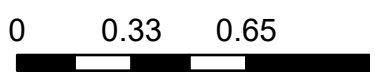
NAHUEL PAINTING
& GRAL CONTRACTING
*Residential • Commercial •
Cottages*

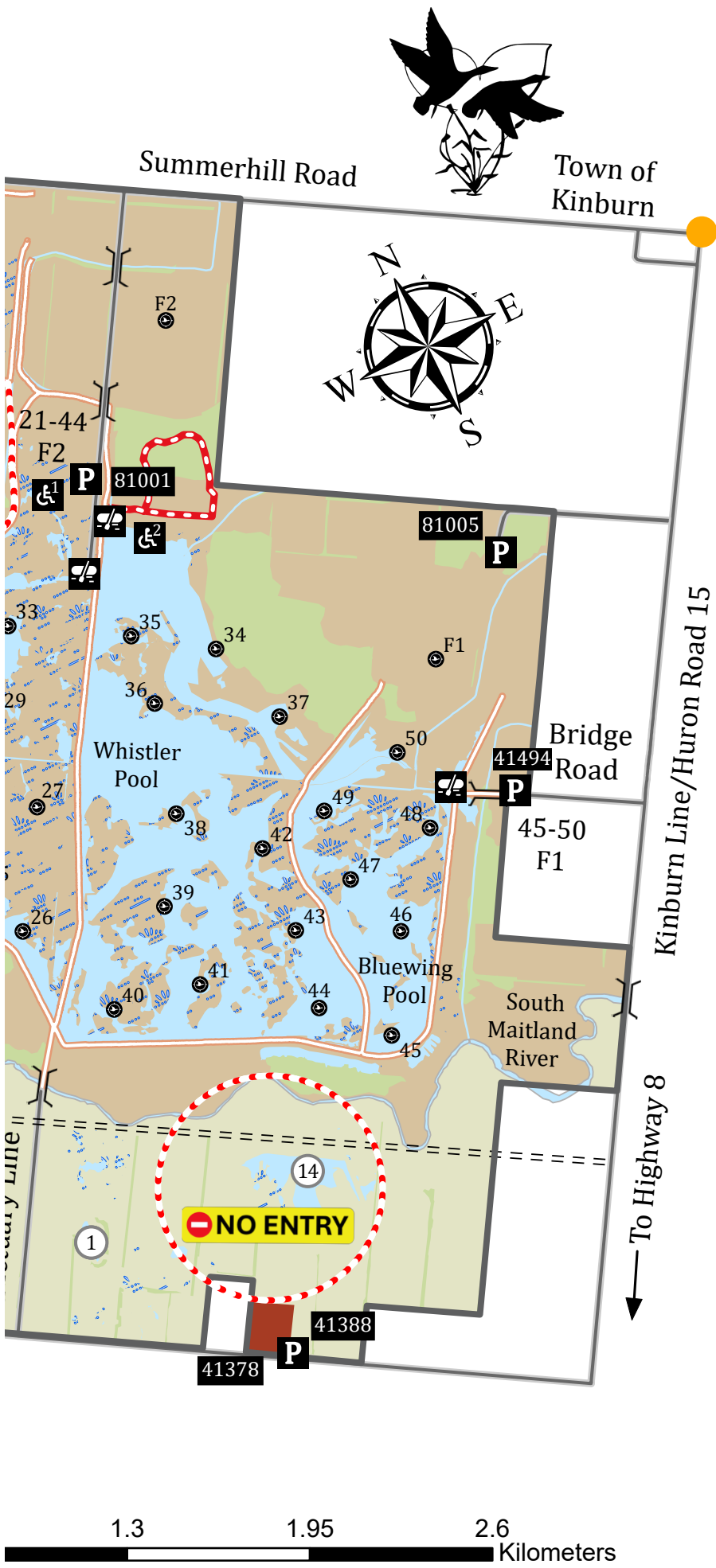
P.O. Box 703
Bayfield, ON N0M 1G0

Tel: 519-565-5817
Email: jparejo@tcc.on.ca



Hullett has been signed in accordance with the Trespass to Property Act. These signs have a yellow circle that is 10cm in diameter. They will refer to prohibited activities within the marsh.





Legend

- Bridge
- Canoe Launch
- Accessible Hunting Stand
- Viewing Stand
- Parking Lot
- Washroom

81105 911 Number

Hunting Stake

Satellite Pond

Town

Dyke

Powerline

Road

NO ENTRY

HPWA Boundary

Private Property

Zone A

Zone B

Wooded Area

Water

Wetland

Tallgrass Prairie

Grassland Restoration

Office Complex

Trails

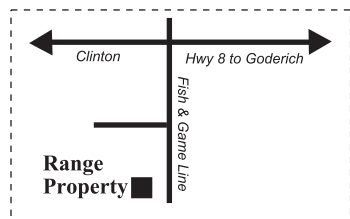
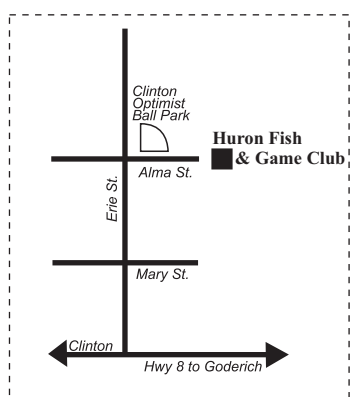
- Blue - 2.3 km
- Green - 2.1 km
- Orange - 1.2 km
- Purple - 0.3 km
- Red - 1.1 km
- White - 4.6 km
- Yellow - 0.4 km



Proud to be an active part of our Community

*your local partners in wildlife conservation,
the Huron Fish and Game Conservation Club, Clinton.*

About the Huron Fish and Game...



- Club was chartered in 1940, with a current membership of over 650.
- Member of the Ontario Federation of Anglers and Hunters, we also maintain a close relationship with
 - Canadian Wildlife Federation
 - Ducks Unlimited Canada
 - Ausable-Bayfield Conservation Association
- The club owns an 80 acre farm located on Fish and Game Line acquired from the estate of a charter member.
- 100 yard and 200 yard rifle range available
- Restricted Range
- 3D Archery Course open Spring and Summer
- Sporting clay range. Open at 10am on Saturdays.
- The club makes many donations annually, mainly to local groups in and around Clinton.
- We maintain a close association with the Town of Clinton, providing use of Club owned land at the corner of Alma & Erie Streets as a ball diamond for local youth.



Clubhouse Hours:
 Monday-Wednesday - 4pm-10pm Thursday - 4pm-11pm
 Friday and Saturday - Noon til Midnight
 Sunday - 1pm - 7pm

**Be sure to join us for our Wing Nights held the 1st Friday of the month
September through June**

Our Clubhouse is available to rent for your next party.
 Perfect for crowds too big for home.
 Birthdays, Anniversaries, Graduations, even Weddings
 Full kitchen or catering available

For membership information:
huronfishandgame.com or 519-482-3022



Ad Directory

Friends of Hullett would like to thank our local partners, advertisers, and sponsors for contributing to the production of our annual Hullett User Guide! A special thank you to the Municipality of Central Huron's Central Huron Donation Fund, which directly contributed to the creation of this year's User Guide! We encourage you to explore the products and services our advertisers offer to help support Friends of Hullett, Hullett Marsh, and our local community!

Services:

Artech Signs & Graphics
Blyth Printing
Central Huron Automotive
Clinton Veterinary Clinic
Dale Rentals
Ducks Unlimited Canada
Excalibur Insurance
Forbes Custom Carpentry
Hill & Hill Farms/Varna Grain
Kelly Auto Services
M.G.M. Townsend Tires
Municipality of Central Huron
Nahuel Painting
RE/MAX – Elaine Coombs
Robinson Electric
Scott Dale Carpentry
Ten Point Financial

Accommodations:

NRG Sanctuary
The Ashwood Inn

Retailers:

Clinton Sporting Goods
Creekside Pheasantry
Hyde Brothers Farm Equipment
MicroAge Basics Goderich
Munro Honey & Meadery
Nature's Nest
Royal Game Birds Inc.
Smith Farmhouse
Sommers Generator Systems
The Old Mill Blyth
West Coast Leisure Sales
Wighty's Repairs Inc.
Zeiss Optics

Entertainment:

Bluewater Golf Course & Campground
Exeter Game Farm
Gateway Casinos Clinton
Huron Fish & Game Conservation Club
Huron/Perth Pheasant Hunt Committee
The White Squirrel Gold Club & Restaurant


Restaurants & Eateries:

Armstrong's Home Bakery
Bayfield Berry Farm
China Palace
Farmer's Dell
Pineridge BBQ Catering Company
Tim Hortons



See your ad
Here

Contact FoH with the size, colouring choice, and graphic (pdf, jpg, or png) or if you have any questions about advertising.


fohoffice@hullettmarsh.com


[hullett_marsh](https://www.instagram.com/hullett_marsh)


hullettmarsh.com


[519-482-7011](tel:519-482-7011)

Prices

Size	Black & White	Colour
Business Card	\$75	\$85
1/4 Page	\$125	\$150
1/3 Page	\$150	\$180
1/2 Page	\$200	\$230
Full Page	\$350	\$400



Scott Dale Licenced Carpenter Clinton ON
519-955-0383 scottdalecarpentry@gmail.com



TOTAL EQUIPMENT CARE

We have a large selection of the agriculture and construction equipment for your needs.

Fast service to keep you in the field.

We know how to handle a wide range of equipment services.

Stop by today and experience our superior service, parts, and sales!

We look forward to serving you!

Family owned and operated since 1939!



HYDE BROTHERS
FARM EQUIPMENT (1997) LIMITED

39992 Rodgerville Rd
Hensall, ON N0M 1X0

Phone: (519) 263-2605

FOLLOW US



www.hydebrothers.com

We Hang our Hats in the Country



Farm with  **Excalibur INSURANCE**

Excaliburinsurance.ca/farm-insurance



20 mins drive from Hullett

THE ASHWOOD INN & BISTRO

LARGE FAMILY SUITS 🍁 TRAILER PARKING
 PET FRIENDLY 🍁 ON-SITE BAR & RESTAURANT
 OUTDOOR SPACES 🍁 POOL & SAUNA

SCAN 

+1 (519) 565-4444

CLINTON VET



Helping Huron County's Pets Stay Healthy and Happy!

519.482.3558
clintonvet.ca

Proudly • Independent • Local • Canadian

257 Huron Street, Clinton, ON



...DESIGN... PRINT... REPEAT...

Your one-stop print shop in the heart of Blyth, ON.

info@blythprinting.com
 519-523-9211
www.blythprinting.com



**122 HURON ROAD, HWY 8 WEST
MITCHELL, ONTARIO**

519.348.0404

WWW.WIGHTYSREPAIRS.COM

**KAWASAKI ~ STIHL ~ GRAVELY ~ RAMBO ~ ARIENS ~ TORO
FIREARMS ~ AMMUNITION ~ HUNTING SUPPLIES**





BASICS
BUSINESS PRODUCTS EXPERTS



Wingham

Goderich

Kincardine

Ink ~ Toner ~ Paper ~ Office Supplies
Office Furniture & Ergonomic Accessories
Computer Sales & Service
Copy & Fax Centre
Authorized Telus & Koodo Dealer
and more!

223 Huron Rd., Goderich 519-524-9863
214 Josephine St., Wingham 519-357-1554
665 Philip Pl., Kincardine 519-396-3274

www.microagebasics.com



Canada's Premier Game Bird Supplier

Proudly supplying
pheasants across the world.

Royal Game Birds

Andy and Laura Lancaster
Andy: 226-802-1480

Located in Drumbo Ontario
royalgamebirdsinc@hotmail.com

www.royalgamebirds.com



147 Beech Street, Clinton, ON

\$10 IN FREE PLAY
REDEEM AT GUEST SERVICES

Play Smart
Knowledge you can bet on.

MUST BE 19+. NO PURCHASE NECESSARY. MUST BE A MY CLUB REWARDS MEMBER. MANAGEMENT RESERVES THE RIGHT TO ALTER, CHANGE, OR AMEND THIS PROMOTION WITHOUT NOTICE. PATRONS WITH SELF-EXCLUDED OR TRESPASSED STATUS MAY NOT PARTICIPATE IN THIS OR ANY OTHER GATEWAY PROMOTION AND MAY BE REMOVED FROM THE SITE. FULL DETAILS AT GUEST SERVICES. LIMIT 1 COUPON PER PATRON FOR THE PROMOTIONAL PERIOD.

MY CLUB
REWARDS

MUNRO HONEY

PURE CANADIAN • SINCE 1914

Honey, Mead, Beeswax Candles, and Gifts

NEW HIVE & HARVEST SESSION MEAD
Refreshingly Different



Monday to Friday 9am to 5pm, Saturdays 10am to 3pm

Alvinston, ON www.munrohoney.com

CLINTON, ONTARIO \ 519-606-5307

ROBINSON ELECTRIC

AGRICULTURAL \ RESIDENTIAL \ COMMERCIAL



BLUEWATER GOLF COURSE & CAMPGROUND

77416 Bluewater Highway, Bayfield ON
(519)482-7197
www.bluewatergolfandcamp.ca
Book online, call, or come visit us!



BIG DISCOUNTS ON TWILIGHT RATES AFTER 4PM

COME GOLF WITH US!




THE OLD MILL

*Fashion is our passion...
...leather and wool are our roots.*

CELEBRATING **65** YEARS
1960 - 2025



One Mile South of Blyth on Hwy #4
- Open 7 Days, Year Round -
519.523.4595 - www.theoldmill.ca

 theoldmill_4

Kelly Auto Service



Towing

Complete Mechanical Repairs

Oil Changes & Tune-ups

Air Conditioning, Tires, etc.



26 Birch St. Seaforth, ON

519-527-2210

DALE RENTALS

519-482-5996

41566 Hydro Line Road, RR. 4, Clinton, ON N0M 1L0

Toilet & Hand Wash Stations

Portable Storage Containers

ARMSTRONG'S

844 CAMPBELL ST LUCKNOW ON



HOME BAKERY

519 528 2211

FRESH BAKED GOODS WITH SMALL TOWN FRIENDLY SERVICE



QUALITY FLIGHT
CONDITIONED BIRDS

EGGS, CHICKS, STARTED, MATURE,
MEAT BIRDS, LIVE OR DRESSED

Ralph & Bernice Gerber
5420 Streicher Line, R R#1 Millbank

Ph: 519-656-1031

Cell: 519-505-6364

Closed Sundays



Specializing in
Cedar Log Furniture

Luke Forbes

519-440-7612

forbescustomcarpentry@gmail.com

Clinton, On



**FOR YOUR HOME,
OUTDOORS,
& THE BIRDS!**




www.naturesnest.ca




519-523-4399
Londesborough, ON

Follow us on
social media for updates
& hours of operation



artech@tcc.on.ca
www.artech-signs.com

FOR SALE

ELAINE COOMBS
BROKER



519-525-9548
ELAINECOOMBS@REMAX.NET



RE/MAX RELIABLE REALTY INC.
Brokerage
519.565.2020
EACH OFFICE INDEPENDENTLY OWNED AND OPERATED.



SCAN TO VIEW LISTINGS



**TEN POINT
FINANCIAL**

WE BRING BAY STREET TO MAIN STREET

DARREN STEVENSON
FINANCIAL ADVISOR

519-525-2112
darren@tenpoint.ca
tenpoint.ca

WHITE SQUIRREL
GOLF CLUB



PATIO | RESTAURANT | GOLF
Located 10km North of Grand Bend
72538 ON-21, Zurich, ON N0M 2T0
www.whitesquirrelgolfclub.com

 **VARNA VG GRAIN**
www.varnagrains.com

38631 Mill Road
R.R. # 1, Varna, ON
N0M 2R0

Bus: 519-233-3218
Fax: 519-233-3440
1-877-433-7908
Email: hillhill@tcc.on.ca

MGM
TOWNSEND
TIRE
ANY REASON, ANY SEASON



40356 Londesboro Road
Londesboro, ON
N0M2H0

Business: 519-523-4742
After Hours: 519-525-8473
Text: 226-916-5432
Toll Free: 877-619-7877

www.townsendtire.ca



Serene Westfield Tiny Cabin- year round

294 square foot with 1 queen bed, full kitchen, 3 piece bathroom, bedding, linens, towels, BBQ, chiminea, 2 porches, patio furniture.

Eastside Pond View Campsite

Accommodates a full size trailer or tents.

Running water, portable toilet with handwashing station, BBQ, firepit with cooking grill, Gazebo with fridge, food prep table.

Indoor and outdoor furniture.

Accommodations

On 115 acres of private land situated on Summerhill Rd. directly across from Hullett Provincial Wildlife Area. Booking by appointment only- no walk-ins.

Indoor swim spa/hot tub available, and lots of extras.

Check us out for more info.

Website:

NRGSanctuary.com

Phone: 519-482-9318

Text: 519-441-3433

Email:

nrgsanctuary@gmail.com

CENTRAL HURON AUTOMOTIVE



Phone: (519) 482-8439
30 Ontario St, Clinton, Ont. N0M 1L0



Road Stand
Open Year Round
7 Days a Week

- Farm Fresh Eggs • Maple Syrup
 - Pepperettes & Summer Sausage
 - Maple BBQ Sauce • Dill Pickled Eggs
- ...and more!!

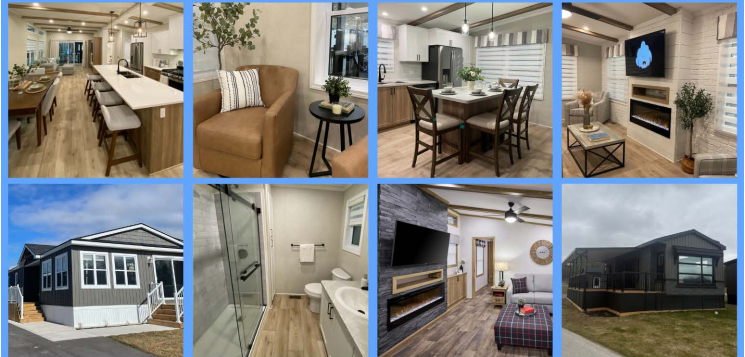


Smith Farmhouse
41356 Hydro Line Rd, Clinton, ON, N0M 1L0
519-441-3033
charlene.smith0626@gmail.com

WEST COAST LEISURE SALES

UPGRADE YOUR PARK MODEL TODAY!

PROUDLY CANADIAN MADE



CALL US TO BOOK AN APPOINTMENT!

77416 Bluewater Highway, Bayfield ON

(519) 482-7197

bluwaterderek@gmail.com

West Coast
Leisure
SALES

NORTHLANDER
INDUSTRIES

Exeter Game Farm

200 Acres of
Hunting Paradise



OPEN YEAR ROUND
7 DAYS A WEEK

Pheasant, Quail &
Chukar Partridge
Hunting



Just 2-1/2 miles
west of Exeter on
Huron Street

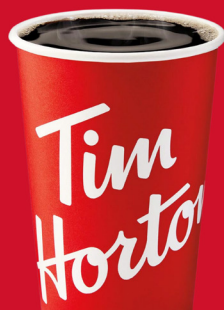
519-228-6036

www.exetergamefarm.com

Tim Hortons

PROUD PARTNER
OPEN TO SERVE YOU

Blyth - 6:00AM
Clinton - 5:00AM
Milverton - 5:00AM
Seaforth - 5:00AM



50 mm Bright. 42 mm Light.

ZEISS SFL 50 Binoculars



Seeing beyond

NEW!



ZEISS SFL 50

Available in 8x, 10x, and 12x.

Experience the brilliance of ZEISS SFL 50

The remarkable new SFL 50 packs the image brightness of a 50mm lens into the sleek, lightweight size of a 42 mm. Enjoy 42% more light for impressive views in low-light conditions, and enjoy the widest field of view in its class.

With a lightweight yet rugged magnesium housing, the innovative SmartFocus concept for fast and precise focusing, and our Ultra-High-Definition (UHD) concept for true-to-life color fidelity, the SFL 50 unlocks a world of vibrant detail and stunning clarity.

ZEISS SFL 50 - 50 mm Bright. 42 mm Light.

zeiss.com/nature/SFL-50

More information:



SOMMERS

Generator Systems

Scan this QR code to
purchase your Pheasant
Challenge Tickets today!



Pheasant Challenge at Hullett Provincial Wildlife Area

Sommers Generator Systems is a
Proud Supporter of the 2025 Pheasant
Challenge & Wish all Participants
Good Luck!!

Tickets available at hullettmarsh.com
and Clinton Sporting Goods.

Firearms, Ammunition, Hunting Supplies and More...

519-606-3006

info@clintonsporting.com



In Store

10 Huron St. Clinton, ON
N0M 1L0

Hours

Monday-Saturday
10am-5pm

Online

www.clintonsporting.com

