



THE HULLETT PROVINCIAL WILDLIFE AREA

A Prime Multi-Use Multi-Season Facility

USER GUIDE 2021-2022





519-482-3997

info@centralhuron.com

23 Albert St. Clinton

www.centralhuron.com

Stop by the School on Wheels museum! The traincar brought education to isolated communities in Ontario during the 20th century.



Visit Balls Bridge, a rare historical truss bridge spanning the beautiful Maitland River and known as "the bridge that love built"

Check out the REACH Centre, a premier agricultural event facility. While you're there, explore next door to find live harness racing at Clinton Raceway, slots at Gateway Casinos, and hockey games at the Eastlink arena.



Tour our local breweries, wineries, and distilleries!
2nd Streetlight Estate Winery
River Road Brewing & Hops
Bayfield Berry Farm
Cowbell



A Message from... The Board of Directors of the Friends of Hullett

On behalf of the Board of Directors (BOD) of the Friends of Hullett (FOH) I would like to welcome you to the Hullett Provincial Wildlife Area (HPWA).

The global pandemic has increased public use of the HPWA dramatically. **We would like to remind you that you are obligated to read and understand the User Guide regulations whether you are a hunter or non-hunter.** If it is your first time visiting the Hullett Marsh, take some time to review the User Guide so that you are familiar with the rules and regulations associated with HPWA. Staff have also created "Tip Sheets" available on our website home page in PDF to help with your research of this self-serve property.

Partnered with the **M.N.R.F and Ducks Unlimited Canada**, the volunteer Board of Directors manage this amazing **2,200-hectare** (5,400 acre) wetland habitat complex in Huron County. If you have an idea for improvement to the area, or a program you might want to see at Hullett, do not hesitate to bring it to the attention of staff or directors.

This multi-use public property is used by hikers, hunters, dog trainers, horseback riders, photographers, kayakers, canoeists, geocachers, nature groups, school groups, foragers and birdwatchers. **Please be respectful to all types of property users when you are pursuing your interest at Hullett Marsh.** Getting outdoors is essential to our mental well-being. We hope that you enjoy your time at the HPWA this year!

Visit our website frequently for up to date information on the HPWA, public notices and

upcoming events. You can also follow us on Facebook at **Hullett Marsh** and on Instagram @**Hullett_Marsh**!

2021 Season Highlights

- Amber Frak has been hired as our new full-time Wildlife & GIS Technician
- Hiring of 3 funded summer students and 1 CHSS co-op placement student
- Road grading provided by the Municipality of Central Huron at no cost to FOH
- Yellow Painting of all map boxes, gates and parking barriers
- Continued rebuilding of parking lot barriers in Zone B
- Year 5 of Phragmites control to save our wetland habitats
- Hiking trail pruning and blazing with many volunteers
- Year 3 of protecting turtle nests
- Removal of rotten "Blue Trail" bridge
- Instagram online fundraising auction
- Conservation Road timber removal to widen roadsides (\$5,000 cost to FOH)
- Return of the Youth Waterfowl Clinic at reduced capacity
- 1,000 pheasants will be released this fall and we encourage you to support the Ideal Supply/Clinton Sporting Goods "Pheasant Challenge" raffle
- Rebuilding of southern Burns Line road and Butterball Pool canoe launch expansion (\$18,000 cost to FOH)

Duane Inkpen, Chairman of the Board

Table of Contents

Message from the Board.....	3
A Word from our Conservation Officers.....	4
General Regulations & Prohibited Actions...	5
Hunting Rules & Regulations.....	6
Hunting Stakes.....	7
Hullett Map.....	8-9
Trails, Geocaching, & Birding.....	10
Photo Contest.....	11
Volunteering.....	12
Ducks Unlimited Canada.....	14

Board Members

Chairman Duane Inkpen
Vice Chair Mathew Shetler

Treasurer Chris Ambrose
Secretary Trevor Latta

Directors Jim Bayne
Ryan Bayne
Wade Beaudoin
Mike Cardinal
Steven Zingaro

Staff

Marsh Manager – Scott Austin
Wildlife & GIS Technician – Amber Frak
Maintenance Coordinator– Julia Beaven
Maintenance Student– Lucas Preszczator
Event Coordinator– Kate Riemer
CHSS Co-op Student– Laney Hayter

Help maintain the marsh! Become a member for as little as \$25 per year!

There are three ways to become a member:

1. Cut out and mail the right side of this page to:
Friends of Hullett
PO Box 1520, Clinton, ON, N0M 1L0
2. Email us at fohoffice@tcc.on.ca
3. Visit our website at hullettmarsh.com

Memberships include emailed newsletters, a vehicle decal, voting rights at the AGM, and a tax receipt.

Payment options include e-transfer, cheque, and PayPal

MEMBERSHIP REGISTRATION FORM

Name: _____

Address: _____

Email: _____

Phone: _____

Are you a hunter? ☐ No ☐ Yes, of: _____

Are you interested in volunteering? ☐ Yes ☐ No

Favourite activity at Hullett: _____

Comments: _____

A Word from our Conservation Officers

Conservation Officers regularly patrol the Hullett Provincial Wildlife Area (HPWA). Officer Drew Pegrum and Officer Vanessa Rukas are responsible for Huron and Perth Counties which includes HPWA. Conservation Officers are part of the Ministry of Northern Development, Mines, Natural Resources and Forestry in the Enforcement Branch. If you have an enforcement related question or see a natural resource violation you may contact the Conservation Officers directly using the cell phone numbers provided below. Conservation Officers are dedicated to protecting our natural resources and ensuring the safety of all HPWA users.

The HPWA is extremely unique and with that comes a unique set of rules that must be adhered to while hunting or recreating within the boundaries. It is very important that all users read and understand the HPWA user guide. Anyone planning on hunting should also review the general hunting regulations at <http://www.ontario.ca/document/ontario-hunting-regulations-summary>

Conservation Officers would like to remind everyone that all roads within the HPWA are considered to be maintained. It is unlawful to have a loaded firearm on the road or within eight meters of the road. It is important to understand that HPWA is a multi-use area. A wide variety of outdoor activities take place here and may overlap. Please respect all HPWA user groups.

We appreciate that the majority of users adhere to the rules. Should you observe an activity or event that may be unlawful, please reach out by calling the Conservation Officers directly or using the Tips Line at 1-877-TIPS-MNR (1-877-847-7667). If you wish to remain anonymous, you may call Crime Stoppers at 1-800-265-8477.

PLEASE REPORT NATURAL RESOURCE VIOLATIONS BY CALLING 1-877-847-7667

You can assist a Conservation Officer by calling our natural resources call line with the following information:

- Nature of the violation (hunting, fishing, species at risk, unlawful harvesting, etc...)
- Vehicle information such as; licence plate, color, make & model of vehicle
- Location of the offence such as civic address or simply where you are in the Hullett
- Specifics about the event that you saw including date, time, names or descriptions of people involved



Ontario Ministry of
Natural Resources
and Forestry

Drew Pegrum

Conservation Officer
Bus: 519-482-3667
Cell: 519-766-8158

Vanessa Rukas

Conservation Officer
Bus: 519-482-3811
Cell: 226-979-2698

華宮酒家

CHINA PALACE RESTAURANT

Specializing in quality take-out

MON CLOSED

TUES - SUN 10 am - 8 pm

80206 Base Line Rd, Clinton

519-482-3323

BAYFIELD

BERRY FARM

Come visit our Farm

Market & Cafe

SEASONAL FRUITS & BERRIES

BAKED GOODS

PRESERVES

GIFTS

CIDER & FRUIT CIDER

ALCOHOLIC BEVERAGES: HARD CIDER, FRUIT WINE, FRUIT LIQUEURS & FRUIT SPIRITS

77697 Orchard Line

Bayfield, ON

519-482-1666

BERRYFARM@TCC.ON.CA

@BAYFIELDBERRYFARM

@BAYFIELD_BERRY_FARM

WWW.BAYFIELDBERRYFARM.ON.CA

General Regulations:

MOTORIZED VEHICLES

Motorized vehicles are permitted on maintained roads and parking lots **only**.

PARKING

Daily parking is permitted between the hours of 5:00 AM and 9:00 PM. Overnight parking is only permitted at 40874 Summerhill Road and camper trailers are not permitted. Please see page 6 for additional parking regulations related to hunting. **Do not park on roadways or in front of gates, cables, boat launches, bridges, and agricultural access points.** From September 1 to December 31, numbered parking spots are reserved for hunters of migratory birds. Non-hunters, please park in the yellow spaces.

DOG TRAINING

Retriever training activities on water are **not permitted** in **ZONE A** between May 15 and July 31 or in **ZONE B** between May 15 and July 15. Dogs are to be leashed or under immediate control of the handler. If you use live birds for training you may obtain the appropriate permits from the MNRF. You may need one or both of the following permits: 1. Authorization to Conduct Field Trials and Training during closed season; 2. Authorization to Release Wildlife Imported into Ontario Propagated from Stock Imported into Ontario. Visit the MNRF website for more information.

HORSE ACCESS

Horse access is **not permitted** in **ZONE A** from October 1 to April 30. Winter access for horses is available in **ZONE B**.

SNOWMOBILES

Snowmobiles are permitted **only** on marked OFSC snowmobile trails.

WATER ACCESS

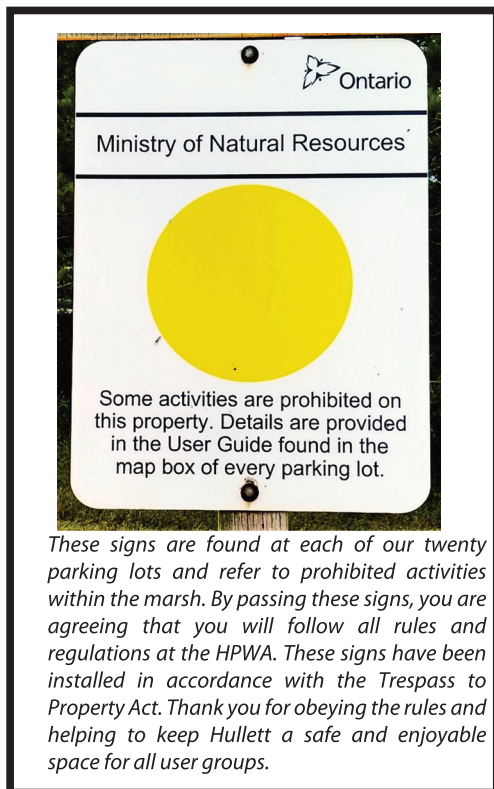
Pond access is **not permitted** in **ZONE A** between May 15 and July 31, and in **ZONE B** between May 15 and July 15. This includes retriever training activities, kayaking, canoeing, and wading. This is to minimize disturbances to nesting waterfowl and support successful breeding.

RESTRICTED AREAS

Baited areas found at Satellite Pond 14 and the Pintail Pool, as well as the White Tail Swamp are off limits to **all users** 365 days per year with no exceptions.

BOOKING FOR LARGE GROUP ACTIVITIES

Booking for any groups (dog trials/training, bird watching, horseback riding, etc.) may be scheduled by contacting the Hullett Office at fohoffice@tcc.on.ca. Any large groups (20 or more people) found on the property that have not scheduled an event will be asked to leave the marsh.



Prohibited Actions:

ALCOHOL

Alcohol is not allowed on public lands under Ontario Liquor License Act.

CAMPING

Camping is not permitted anywhere in the HPWA.

COMMERCIAL OPERATIONS

Commercial operations will not be located on the property. No monopolization of the area is permitted. All persons and/or groups are expected to remove any and all equipment they bring into the area.

ATVs

ATVs are NOT permitted within the HPWA; except for Friends of Hullett management purposes, enforcement officers, and registered trappers for purposes approved by FOH. ATV's are extremely damaging to the trails, vegetation, and the natural ecosystem of the property. The marsh is patrolled and charges will be laid.

LITTERING

You are responsible for the removal of your own garbage and property. Please note that there are no recycling bins or garbage cans within the HPWA.

MOTORIZED BOATS

All motorized boats are prohibited, including those with electric motors.

Hunting Rules & Regulations

The Boundary between **ZONE A** and **ZONE B** is the South Maitland River

Zone A Migratory Bird Hunting Regulations:

Zone A is a unit consisting of 1,020 ha (2,520 acres) of land of which 680 ha (1,680 acres) are flooded with shallow open water. The average depth within the five compartments is approximately 50 cm (20 in).

Within **Zone A**, there are 52 hunting stations (stakes) available.

The following regulations apply in **Zone A**:

1. To lawfully hunt migratory birds, during their open season, you must park one vehicle in a numbered space in a designated parking lot. The number of your space permits you to hunt at the stake with the same number. Stake locations are shown on the user guide map.
2. Hunters must keep their firearms unloaded and encased except while occupying the blind or stake.
3. Only **two people** are permitted at any stake including non-hunters.
4. The two people must hunt within 30 metres of the blind or stake that is marked with the same number as the vehicles parking space.
5. Portable blinds may be used. No person shall cut any vegetation nor erect and leave a blind of any fashion.
6. Stake numbers F1 and F2 are field hunting stakes. These stakes will be open for hunting once crops are harvested. Please visit the homepage of our website for updates.
7. There are two accessible blinds available for your convenience. Please refer to the accompanying map for locations. To make a reservation for one of these blinds, please email FOH at fohoffice@tcc.on.ca prior to your hunt.

Zone A Small Game Hunting Regulations:

It is lawful to hunt small game in **Zone A** only if the following conditions are adhered to:

1. The season for any and all migratory birds must be closed.
2. The vehicle arrived in must be parked in a designated lot for Zone A but not in a parking space designated for a waterfowl stake.

BIG GAME HUNTING IS NOT PERMITTED IN ZONE A.

Zone B is South/West of the South Maitland River

Zone B is a unit consisting of 1,060 ha (2,620 acres). This zone consisted of agriculture fields, meadows, forests, tall grass prairies, marginal woodland, swamps, and ponds.

All game for which there is an open season, and during that open season, may be hunted under the following conditions:

- All hunters must park in one of the designated parking lots and position their vehicle in front of an unnumbered barrier. This parking space permits all hunters in the vehicle to hunt anywhere in **Zone B**.

Pheasant Hunting

For the 2021 pheasant season FOH has purchased 1,000 ring-neck pheasants from Upland Pheasantry for the purpose of hunting in **Zone B only**. Pheasants are released at intervals during the open season and are not scheduled to specific days. FOH staff are not authorized to inform hunters of release locations, dates or times. The birds released are provided without charge to the public but it is highly recommended that hunters support the Friends of Hullett **Pheasant Challenge**. With the purchase of a ticket you are entered into a draw to win a **portable generator** or a **shotgun**!

The future of the pheasant hunt is in the hands of the hunters based on the financial support. The 1,000 birds for 2021 were the result of 2020 fundraising.

The **Pheasant Challenge** is sponsored by **Ideal Supply & Clinton Sporting Goods** with our sincere thanks. Tickets are available at **Clinton Sporting Goods (519-606-3006)** or at www.hullettmarsh.com via PayPal and e-transfer.

General Hunting Rules

Firearms:

All roadways within Hullett are considered maintained. It is illegal to have a loaded firearm within eight (8) meters of a maintained road. **Hunters are not exempt from any federal or provincial laws regarding firearms while hunting in Hullett.**

Hunting:

Hunting is not permitted near maintenance buildings, or on neighbouring private land, without the permission of the landowner.

A retriever, waders or canoe will be necessary to ensure retrieval of all birds shot. Hunters are required by the Migratory Birds Convention Act to retrieve downed game.

Hunting is prohibited within 400 metres of waterfowl baiting locations. Bait sites are marked on the user guide map and are signed on the property.

From June 1 to September 1, hunting is prohibited on or near the nature trails.

Consult the Hunting Regulations Summary for a more detailed listing of Ontario's Hunting regulations or view the summary online at: www.ontario.ca/page/hunting

GPS HUNTING STAKES FOR "A" ZONE

Stake	Latitude	Longitude
1	38' 14.071"	27' 24.831"
2	38' 26.261"	27' 16.535"
3	38' 27.917"	26' 56.393"
4	38' 19.104"	26' 58.276"
5	38' 7.066"	26' 56.767"
6	38' 28.097"	28' 0.920"
7	38' 27.145"	27' 47.880"
8	38' 14.493"	27' 42.472"
9	38' 2.900"	27' 47.560"
10	37' 58.675"	27' 58.327"
11	37' 53.13"	28' 10.472"
12	38' 7.493"	27' 58.083"
13	38' 14.646"	27' 52.783"
14	38' 28.423"	28' 16.277"
15	38' 16.454"	28' 10.248"
16	38' 7.463"	28' 13.257"
17	38' 1.030"	28' 24.855"
18	38' 18.937"	28' 23.77"
19	38' 37.632"	28' 17.347"
20	38' 45.474"	28' 16.053"
21	37' 44.107"	28' 17.582"
22	37' 41.124"	28' 2.029"
23	37' 29.153"	27' 56.448"
24	37' 26.804"	27' 44.070"
25	37' 14.197"	27' 35.585"
26	37' 7.435"	27' 32.410"
27	37' 19.569"	27' 21.660"
28	37' 23.962"	27' 33.651"
29	37' 31.176"	27' 20.989"
30	37' 41.579"	27' 45.745"
31	37' 35.528"	27' 35.034"
32	37' 42.646"	27' 30.268"
33	37' 39.797"	27' 13.066"
34	37' 26.811"	26' 45.214"
35	37' 32.473"	26' 56.233"
36	37' 24.299"	26' 57.600"
37	37' 16.553"	26' 40.766"
38	37' 11.801"	27' 2.326"
39	37' 2.790"	27' 10.513"
40	36' 54.694"	27' 24.907"
41	36' 52.902"	27' 10.929"
42	37' 3.769"	26' 52.450"
43	36' 53.619"	26' 53.490"
44	36' 44.405"	26' 55.608"
45	36' 37.843"	26' 47.209"
46	36' 46.808"	26' 37.781"
47	36' 56.094"	26' 42.087"
48	36' 57.352"	26' 27.150"
49	37' 4.238"	26' 40.273"
50	37' 6.848"	26' 26.513"
F1	37' 14.543"	26' 14.47"
F2	38' 3.386"	26' 29.118"

Zone A Waterfowl Opening Day 2021**Special procedure for 2021 due to COVID**

Please check social media and website (see below) for updates on opening day procedures

This year, like last year, there will be no opening day draw for hunting stakes. This is to promote physical distancing and maintain a safe hunting environment for both FOH staff and HPWA users.

Instead, opening day will operate like any other day of hunting in the marsh. Hunters who arrive before 5:00 AM will park in the overflow parking lot located at 40874 Summerhill Rd, moving to the parking lot and space that corresponds to their chosen hunt stake at 5:00 AM.

Please be respectful of other hunters and come prepared, having scouted your favourite hunt stakes prior to opening day.

Hunting in Zone A after Opening Day:

Before 5:00 AM, line up in the overflow parking lot (40874 Summerhill Rd) on a first come, first serve basis at the numbered parking barrier that corresponds to your chosen hunting stake.

After 5:00 AM, hunters must proceed to the parking lot corresponding with the stake number they have selected to hunt from. Please refer to the map to see which parking spaces are located in which parking lot.

Accessible Hunting Blinds:

There are two handicap accessible blinds at Hullett Marsh for your convenience. Please refer to the map for locations. Use of these facilities can be reserved by emailing fohoffice@tcc.on.ca a few days prior to your hunt.

Access to Hunting Stakes:

Walk-in (chest waders highly recommended): 1-9, 11, 22, 27, 32, 33, 42, 46, 48-50. The water level within the ponds are actively managed by Ducks Unlimited Canada. Access will change from year to year and season to season.

Additional Comments:

Trail and channel markers are placed to help you find some stakes. The markers and stake numbers will show up in the beam of a flashlight.

We urge all hunters to scout the area ahead of time and take a compass with you. Many stakes will be almost impossible to find in the dark unless you know the area well. Please refer to GPS data for stakes.

Stakes numbered 1 – 50 are permanent locations. Stakes F1 and F2 are field hunting stakes and are placed after crop harvest.

Wading in unfamiliar waters can be extremely dangerous. Chest waders will be required in most cases. Keep in mind that open water can mean deep water, especially near dykes.

Sky-busting shows poor sportsmanship and results in crippled birds. This is strongly discouraged at Hullett. Know your shotgun and its limitations.

Due to management practices, water levels may fluctuate and shorelines may change.

Some stakes may be closed at the MNRF's discretion during certain periods to restrict hunting activity near waterfowl banding sites and special events such as youth hunts. If done, notices will be posted at the parking space for that stake.

Interactive Google Map:

Visit the homepage of our website and click on the map icon for a custom Google Map of all the trails, hunting stakes, boat launches, and parking lots at Hullett! Use the location on your phone for interactive directions. On this map, you can turn different layers on and off depending on what you are looking for. Use it to show just trails, just parking lots, just hunting stakes, or a combination of all of them. This is a great tool to use in combination with a printed map to find your way around the marsh.

Follow us on social media for updates on what's happening at the marsh!



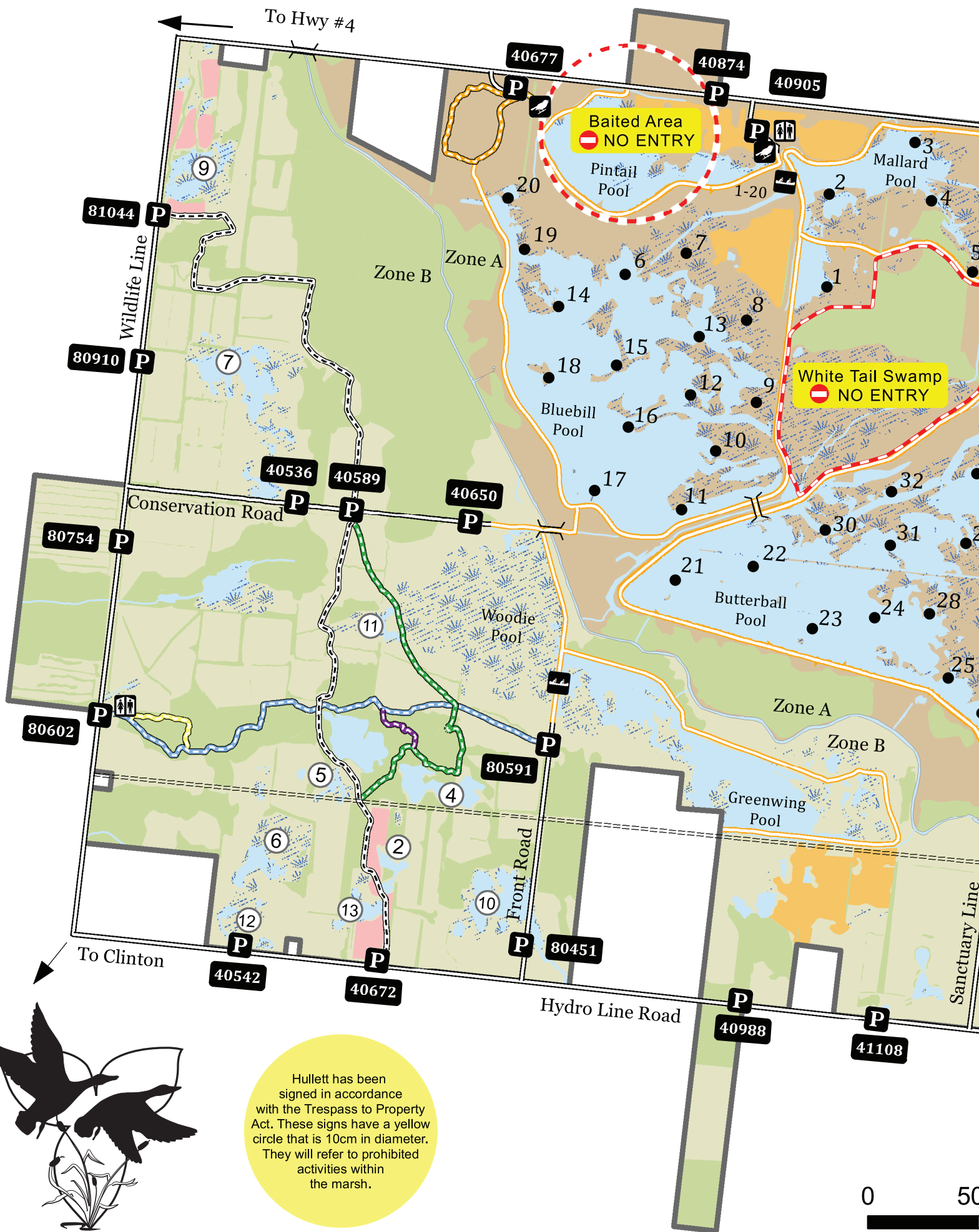
www.hullettmarsh.com



@HullettMarsh

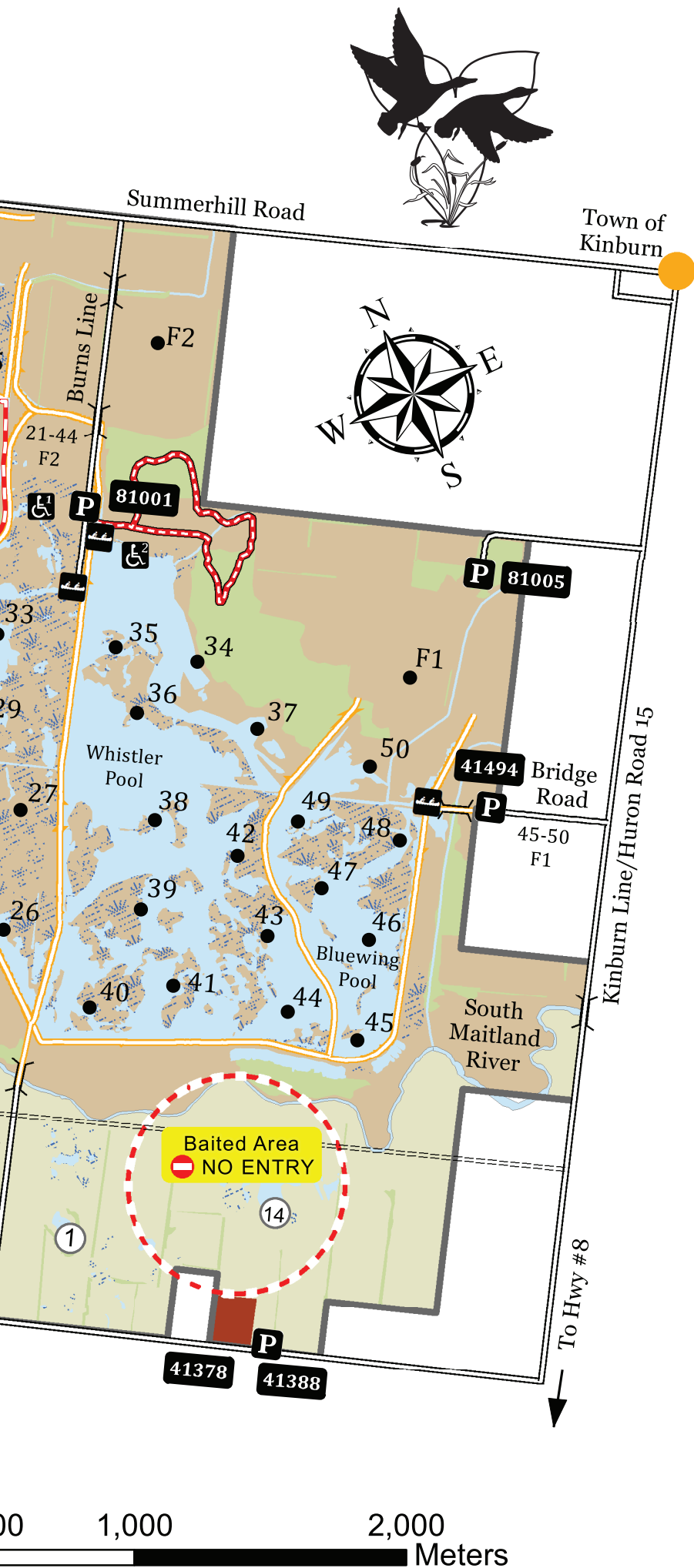


@Hullett_Marsh



Hullett has been signed in accordance with the Trespass to Property Act. These signs have a yellow circle that is 10cm in diameter. They will refer to prohibited activities within the marsh.





Legend

- Bridge
- Canoe Launch
- Accessible Hunting Stand
- Viewing Stand
- Parking Lot
- Washroom
- 911 Number
- Hunting Stake
- Satelite Pond
- Town

Trails

- Blue - 2.3 km
- Green - 2.1 km
- Orange - 1.2 km
- Purple - 0.3 km
- Red - 2.2 km
- White - 4.6 km
- Yellow - 0.4 km
- Dyke
- Powerline
- Road
- Baited Area - NO ENTRY
- HPWA Boundry
- Private Property
- Zone A
- Zone B
- Wooded Area
- Water
- Wetland
- Tall Grass Prairie
- Grassland Restoration
- Office Complex

Red Trail

Length: 2.2km
Difficulty: Hard
Time: 30-50 min
Slope: 0-3%
Min. EL: 298m
Max. EL: 303m

This trail is for adventurous hikers looking for a challenge. There is lots of poison ivy. The Red Trail goes through mature forests and fallow fields. FOH staff will be working to improve this trail in the future.

Orange Trail

Length: 1.2km
Difficulty: Medium
Time: 20-30 min
Slope: 0-8%
Min. EL: 303m
Max. EL: 315m

This trail has access to the dyke systems and will lead you to the highest point in the HPWA for great views. This trail is recommended if you are new to Hullett Marsh and forms a loop back to the parking lot.

Yellow Trail

Length: 0.4km
Difficulty: Easy
Time: 10-15 min
Slope: 0-4.5%
Min. EL: 299m
Max. EL: 304m

This trail connects to the Blue Trail and offers a great short loop if you don't want to hike the entire Blue Trail. The forest floor flourishes here, after several Ash trees were lost.

Green Trail

Length: 2.4km
Difficulty: Medium
Time: 30-50 min
Slope: 0-8%
Min. EL: 299m
Max. EL: 313m

Woodlands and meadows offer a nice balance between sunshine and shade while raptor nests and duck boxes offer great sights to see. This trail intersects Blue, Purple, and White Trails.

Blue Trail

Length: 2.3km
Difficulty: Medium
Time: 30-50 min
Slope: 0-8%
Min. EL: 298m
Max. EL: 309m

This trail stretches from Wildlife Line to Front Road and is full of wildlife and wildflowers in both woodland and meadow habitats. It intersects Yellow, White, Purple, and Green Trails.

Purple Trail

Length: 0.3km
Difficulty: Easy
Time: 5-10 min
Slope: 0-3%
Min. EL: 304m
Max. EL: 307m

This trail is accessible through either the Blue or Green Trail. Along it you will find a variety of ecosystems and a large number of Beech trees, whose smooth trunks resemble elephant legs.

White Trail

Length: 4.7km
Difficulty: Medium
Time: 60-90 min
Slope: 0-9%
Min. EL: 300m
Max. EL: 313m

This is the longest trail in the HPWA, spanning from one side to the other. It allows you to experience a wide variety of habitats and wildlife, showing the importance of biodiversity.

Dyke System

Our 17km of dykes offer relatively flat, even hikes and can be found all over the marsh. There's minimal tree coverage but great views of open water, wildflowers, and wildlife.

Each of Hullett's seven trails has been marked using the standardized blazing method used across North America. The colour of the paint on the blaze corresponds to the colour of the trail on the map.

CONTINUE
STRAIGHT



RIGHT TURN



SPUR LEADING
TO A DIFFERENT
TRAIL

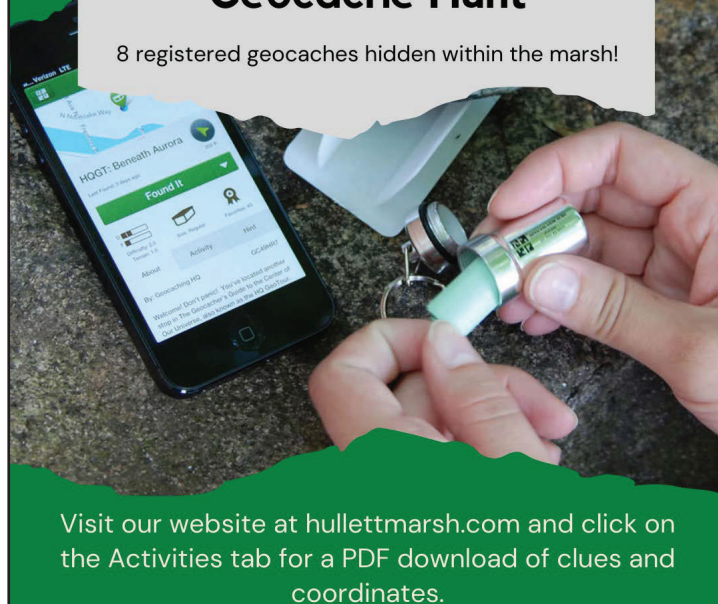


LEFT TURN



Hullett Marsh Geocache Hunt

8 registered geocaches hidden within the marsh!



Visit our website at hullettmarsh.com and click on the Activities tab for a PDF download of clues and coordinates.

Birding at Hullett Marsh

Over 200 species of birds have been spotted at the Hullett Provincial Wildlife Area. Which will you find?



Visit our website at hullettmarsh.com and click on the Activities tab for a PDF download of our Birding Checklist. You can also track your finds on an app like iNaturalist or eBird.

2022 PHOTO CONTEST

Show us your pictures of Hullett Marsh! From scenery, and wildlife to hunting, horseback riding, and family fun, FOH wants to see it all. Email your submissions to fohoffice@tcc.on.ca

Images MUST:

- Be taken at the HPWA
- Depict safe, rule abiding practices
- Not contain any gore
- Include the photographer's name in the file name (eg. John_Smith.jpg)

1st Place Winner:

Free Hullett Membership and Photo featured on the cover of the 2022/2023 User Guide.

2nd - 6th Place Winners:

Photo showcased on the cover of the 2022/2023 User Guide.

By entering your photos, you give Friends of Hullett the rights to use them in media posts, presentations, newsletters, and public displays with photo credit.

Munro Honey & Meadery

Honey ~ Mead ~ Gift Baskets



Open from April until December, Mon-Fri 9am-5pm, Sat 10am-3pm
Closed Statutory Holidays & Saturdays from January 1st to April 1st

3115 River St. Alvinston 519-847-5333



Welcome to

Parker House Motel

Menu

77575 London Rd. Clinton, ON
PHONE: 519-482-3469 Ext. 0
FAX: 519-482-9545
WEBSITE: www.parkerhousemotel.com
Cable TV, Wireless Internet,
Free Local Calls, A/C, Fridges & Microwaves
OWNER: Ann Anderson

ink ~ toner ~ paper ~ office supplies
computer sales & service
Telus & Koodo phones ~ cards & cellular accessories
copy & fax centre ... and much more!



223 Huron Rd., Goderich 519-524-9863
214 Josephine St., Wingham 519-357-1554
665 Philip Pl., Kincardine 519-396-3274
www.microagebasics.com

Exeter Game Farm

200 Acres of
Hunting Paradise



OPEN YEAR ROUND
7 DAYS A WEEK

Pheasant, Quail &
Chukar Partridge
Hunting

Just 2-1/2 miles
west of Exeter on
Huron Street

519-228-6036

www.exetergamefarm.com

Matt Schultz
**Bluewater
TAXIDERM**
Professionally Trained WHITETAIL SHOULDER MOUNT SPECIALIST

Matt Schultz 519-301-5137
37881 Crystal Springs Road matt@bluewatertaxidermy.com
R.R.1 Varna Ont. N0M 2R0 www.bluewatertaxidermy.com

Volunteer Opportunities



We are always looking for passionate volunteers to help with various tasks around the marsh! You can help out with trail maintenance, nesting programs, painting, pruning, and so much more.

To learn more, email us at
fohoffice@tcc.on.ca.



SOMMERS

Generator Systems

Kelly Auto Service

Towing

Complete Mechanical Repairs

Oil Changes & Tune-ups

Air Conditioning, Tires, etc.



26 Birch St. Seaforth, ON

519-527-2210



Hosted by the Huron/Perth
Youth Pheasant Hunt Committee

DATE

Saturday, November 13, 2021
(COVID permitting)

LOCATION

Hullett Marsh

Open to apprentice hunters

12 to 16 years of age

www.loop-perthhuron.ca





NATURE'S NEST
LONDESBOURGH, ONTARIO
EST. 2004

**BIRDSEED & FEEDERS
HOME & GARDEN DECOR
OUTDOOR WATER FEATURES
FIREPOTS, CAMPFIRE GEAR,
& much more!**

www.naturesnest.ca
519-523-4399
Londesborough, ON

Follow us on
social media for updates
& hours of operation

Looking for more information?

VISIT OUR WEBSITE!

- Hiking & Hunting Tip Sheets
- Digital User Guide
- Rules & regulations
- Pheasant Challenge tickets
- Membership form
- Contact information
- Information on activities
- History of the HPWA



HULLETTMARSH.COM

artech signs & graphics

artech@tcc.on.ca
www.artech-signs.com

In Huron & Perth Counties since 1988...

1,383
ARRESTS MADE

2,842
CHARGES LAID

\$3,748,898
IN ILLICIT CASH/PROPERTY SEIZED

\$13,620,065
IN ILLICIT DRUGS SEIZED

\$131,435
IN REWARDS AUTHORIZED

CRIME STOPPERS
HURON PERTH
1-800-222-TIPS (8477)

Environmental crimes cause significant damage to our world, costing approximately \$40 billion per year worldwide. Local wildlife crimes include poaching, harvesting of endangered animals & dumping waste. If you have information about any of these crimes, please contact Crime Stoppers and be eligible for a cash reward.


MAELSTRÖM

Huron County's 1st Winery

Come and enjoy Huron County grown and internationally awarded wines at our tasting room. You may choose to stroll through the nine acres of vineyard, do a tasting at the tasting bar, enjoy a glass of wine on the patio or picnic at your leisure.

Now selling specialty cheeses, spices and jellies.

78925 Sanctuary Line, Huron East
Open daily 519-233-9463
www.maelstromwinery.ca



A landscape made for ducks welcomes all wildlife

WELCOME TO ONE OF THE MOST REMARKABLE RESTORED WILDLIFE HABITATS IN EASTERN CANADA

HULLETT MARSH IS A SPECTACULAR COMPLEX OF WETLANDS buffered by more than 5,000 acres (2,000 hectares), which has been under provincial management since the late 1970s. This area provides exceptional mixed habitats for wildlife just east of Lake Huron, one of the Great Lakes connecting Canada and the United States, and a vital migration path for waterfowl and other birds year after year.

In the early 1980s, following the designation of the Hullett Wildlife Management Area by the Province of Ontario, Ducks Unlimited Canada (DUC) worked with its partners to transform the former agricultural landscape with eight large wetland restorations.

Large wetland projects require engineered infrastructure to maintain water levels that support healthy wetland plants to feed wildlife and create habitat they need for survival. Each wetland “cell” at Hullett Marsh is equipped with water-level controls that allow us to mimic natural wetland dynamics and manage high waters from the spring melt along the South Maitland River.

This infrastructure has a limited lifespan and must be repaired or replaced as time passes to avoid future loss of vital habitats. DUC and its partners have invested substantially to replace, upgrade and rebuild the infrastructure at Hullett Marsh to keep the habitat thriving—including recent repairs to the infrastructure at Greenwing Pool.

Hullett Marsh was a powerful vision that was literally brought to life by the arrival of waterfowl and other wildlife by the thousands. A vibrant landscape awaits you:

- ✚ Trails and waterways
- ✚ Healthy wetland dynamics
- ✚ Habitat for 18 waterfowl species

DUC has completed nearly 4,000 habitat projects and conserved almost one million acres of wildlife habitats in Ontario. We deliver wetland conservation that benefits everyone. We save wildlife and special natural places. We use science to find solutions to the most important environmental issues of the day and we collaborate with people who are helping create a healthier world.

The wetlands we save aren't just for ducks – they're for all of us.



What's good for ducks is good for hundreds of Ontario's wildlife species – including species at risk. Large, permanent wetlands provide food and shelter for wildlife in all seasons. The habitat that ducks love is also home to other birds, turtles, frogs, snakes and many other animals.



ADVENTURE AWAITS!

Enjoy the best nature has to offer at DUC Destinations – including Hullett Marsh.

Start exploring! Start with My DUC™

- ✚ Find DUC Destinations to explore
- ✚ Record wildlife sightings on iNaturalist
- ✚ Enter contests for chances to win prizes, and more!



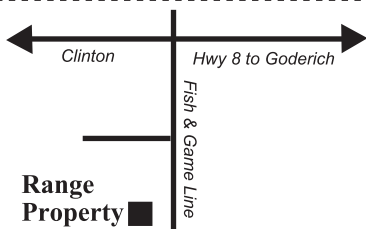
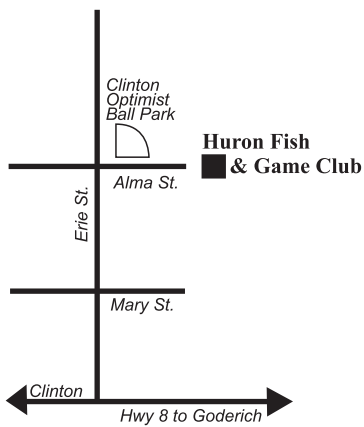
ducks.ca/myduc





Clubhouse Hours:
 Monday - Thursday - 4pm - 10pm
 Friday and Saturday - Noon til Midnight
 Sunday - 1pm - 7pm

Our Clubhouse is available
 to rent for your next party.
 Perfect for crowds
 too big for home.
 Birthdays, Anniversaries,
 Graduations, even Weddings
 Full kitchen
 or catering available



About the Huron Fish and Game Club

-  Club was chartered in 1940, with a current membership of over 500.
-  3D Archery Course open Spring and Summer
-  •Member of the Ontario Federation of Anglers and Hunters, we also maintain a close relationship with
 - Canadian Wildlife Federation
 - Ducks Unlimited Canada
 - Huron Perth Wild Turkey Association
 - Ausable-Bayfield Conservation Association
-  Restricted Firearms Course
-  We have Spring, Summer and Winter sporting clay range. Open at 10am on Saturdays.
-  Club makes many donations annually, to local groups in and around Clinton.
-  The club owns an 80 acre farm located on Fish and Game Line acquired from the estate of a charter member.
-  The club maintains a close association with the Town of Clinton, providing use of Club owned land at the corner of Alma & Erie Streets as a ball diamond for local youth.
-  100 yard and 200 yard rifle range available



*your local partners in wildlife conservation,
 the Huron Fish and Game Conservation Club, Clinton*

*Proud to be an active
 part of our Community*

For membership information:
huronfishandgame.com or 519-482-3022
 email - thefish@tcc.on.ca



Pheasant Challenge

at Hullett Provincial Wildlife Area

 **IdealSupply**

*From Opening Day to the End of
Pheasant Hunting Season*

Entry Cost \$10.00

Ideal Supply is a Proud Supporter
of the 2021 Pheasant Challenge &
Wish all Participants Good Luck!!

Tickets available at hullettmarsh.com
and Clinton Sporting Goods

**GUNS, AMMO, HUNTING ACCESSORIES,
RELOADING SUPPLIES, CROSSBOWS, SCOPES,
WORMS, SPAWN, RODS AND REELS**



10 HURON STREET CLINTON, ON N0M 1L0

519-606-3006

www.clintonssporting.com